

# User Manual

Revision 1.001

English

## S7comm / EtherNet/IP Slave - Converter

(Order Code: HD67627-A1)

For Website information:

[www.adfweb.com?Product=HD67627](http://www.adfweb.com?Product=HD67627)

For Price information:

[www.adfweb.com?Price=HD67627-A1](http://www.adfweb.com?Price=HD67627-A1)

### Benefits and Main Features:

- ✚ Triple Electrical isolation
- ✚ Temperature range: -40°C/+85°C (-40°F/+185°F)

For other S7comm products see also the following link:

#### S7comm from/to ...

<a href="http://www.adfweb.com?Product=HD67618">www.adfweb.com?Product=HD67618</a>	( <b>Modbus TCP Slave</b> )
<a href="http://www.adfweb.com?Product=HD67619">www.adfweb.com?Product=HD67619</a>	( <b>PROFIBUS Slave</b> )
<a href="http://www.adfweb.com?Product=HD67620">www.adfweb.com?Product=HD67620</a>	( <b>IEC61850 Server</b> )
<a href="http://www.adfweb.com?Product=HD67621">www.adfweb.com?Product=HD67621</a>	( <b>Serial</b> )
<a href="http://www.adfweb.com?Product=HD67622">www.adfweb.com?Product=HD67622</a>	( <b>Modbus Slave</b> )
<a href="http://www.adfweb.com?Product=HD67623">www.adfweb.com?Product=HD67623</a>	( <b>CAN</b> )
<a href="http://www.adfweb.com?Product=HD67624">www.adfweb.com?Product=HD67624</a>	( <b>CANopen</b> )
<a href="http://www.adfweb.com?Product=HD67625">www.adfweb.com?Product=HD67625</a>	( <b>DeviceNet Slave</b> )
<a href="http://www.adfweb.com?Product=HD67626">www.adfweb.com?Product=HD67626</a>	( <b>SNMP Agent</b> )
<a href="http://www.adfweb.com?Product=HD67628">www.adfweb.com?Product=HD67628</a>	( <b>KNX</b> )
<a href="http://www.adfweb.com?Product=HD67629">www.adfweb.com?Product=HD67629</a>	( <b>MQTT</b> )
<a href="http://www.adfweb.com?Product=HD67630">www.adfweb.com?Product=HD67630</a>	( <b>BACnet Slave</b> )
<a href="http://www.adfweb.com?Product=HD67631">www.adfweb.com?Product=HD67631</a>	( <b>Ethernet</b> )
<a href="http://www.adfweb.com?Product=HD67632">www.adfweb.com?Product=HD67632</a>	( <b>OPC UA Server</b> )
<a href="http://www.adfweb.com?Product=HD67633">www.adfweb.com?Product=HD67633</a>	( <b>PROFINET Slave</b> )

Do you have your customer protocol? Then go to:

[www.adfweb.com?Product=HD67003](http://www.adfweb.com?Product=HD67003)

Do you need to choose a device? Do you want help?

[www.adfweb.com?Cmd=helpme](http://www.adfweb.com?Cmd=helpme)



User Manual

## INDEX:

	Page
INDEX	2
UPDATED DOCUMENTATION	2
REVISION LIST	2
WARNING	2
TRADEMARKS	2
SECURITY ALERT	3
EXAMPLE OF CONNECTION	4
CONNECTION SCHEME	5
CHARACTERISTICS	6
CONFIGURATION	6
POWER SUPPLY	7
FUNCTION MODES	8
LEDS	9
ETHERNET	10
USE OF COMPOSITOR SW67627	11
NEW CONFIGURATION / OPEN CONFIGURATION	12
SOFTWARE OPTIONS	13
SET COMMUNICATION	15
S7COMM ACCESS	17
UPDATE DEVICE	21
PLC CONFIGURATION	23
MECHANICAL DIMENSIONS	27
ORDERING INFORMATIONS	28
ACCESSORIES	28
DISCLAIMER	29
OTHER REGULATIONS AND STANDARDS	29
WARRANTIES AND TECHNICAL SUPPORT	30
RETURN POLICY	30

## UPDATED DOCUMENTATION:

Dear customer, we thank you for your attention and we remind you that you need to check that the following document is:

- ✚ Updated
- ✚ Related to the product you own

To obtain the most recently updated document, note the “document code” that appears at the top right-hand corner of each page of this document.

With this “Document Code” go to web page [www.adfweb.com/download/](http://www.adfweb.com/download/) and search for the corresponding code on the page. Click on the proper “Document Code” and download the updates.

## REVISION LIST:

Revision	Date	Author	Chapter	Description
1.000	18/09/2021	Ff	All	First Release
1.001	11/08/2025	Mdb	All	New design

## WARNING:

ADFweb.com reserves the right to change information in this manual about our product without warning.

ADFweb.com is not responsible for any error this manual may contain.

## TRADEMARKS:

All trademarks mentioned in this document belong to their respective owners.

**SECURITY ALERT:****GENERAL INFORMATION**

To ensure safe operation, the device must be operated according to the instructions in the manual. When using the device, legal and safety regulation are required for each individual application. The same applies also when using accessories.

**INTENDED USE**

Machines and systems must be designed so the faulty conditions do not lead to a dangerous situation for the operator (i.e. independent limit switches, mechanical interlocks, etc.).

**QUALIFIED PERSONNEL**

The device can be used only by qualified personnel, strictly in accordance with the specifications. Qualified personnel are persons who are familiar with the installation, assembly, commissioning and operation of this equipment and who have appropriate qualifications for their job.

**RESIDUAL RISKS**

The device is state-of-the-art and is safe. The instruments can represent a potential hazard if they are inappropriately installed and operated by untrained personnel. These instructions refer to residual risks with the following symbol:

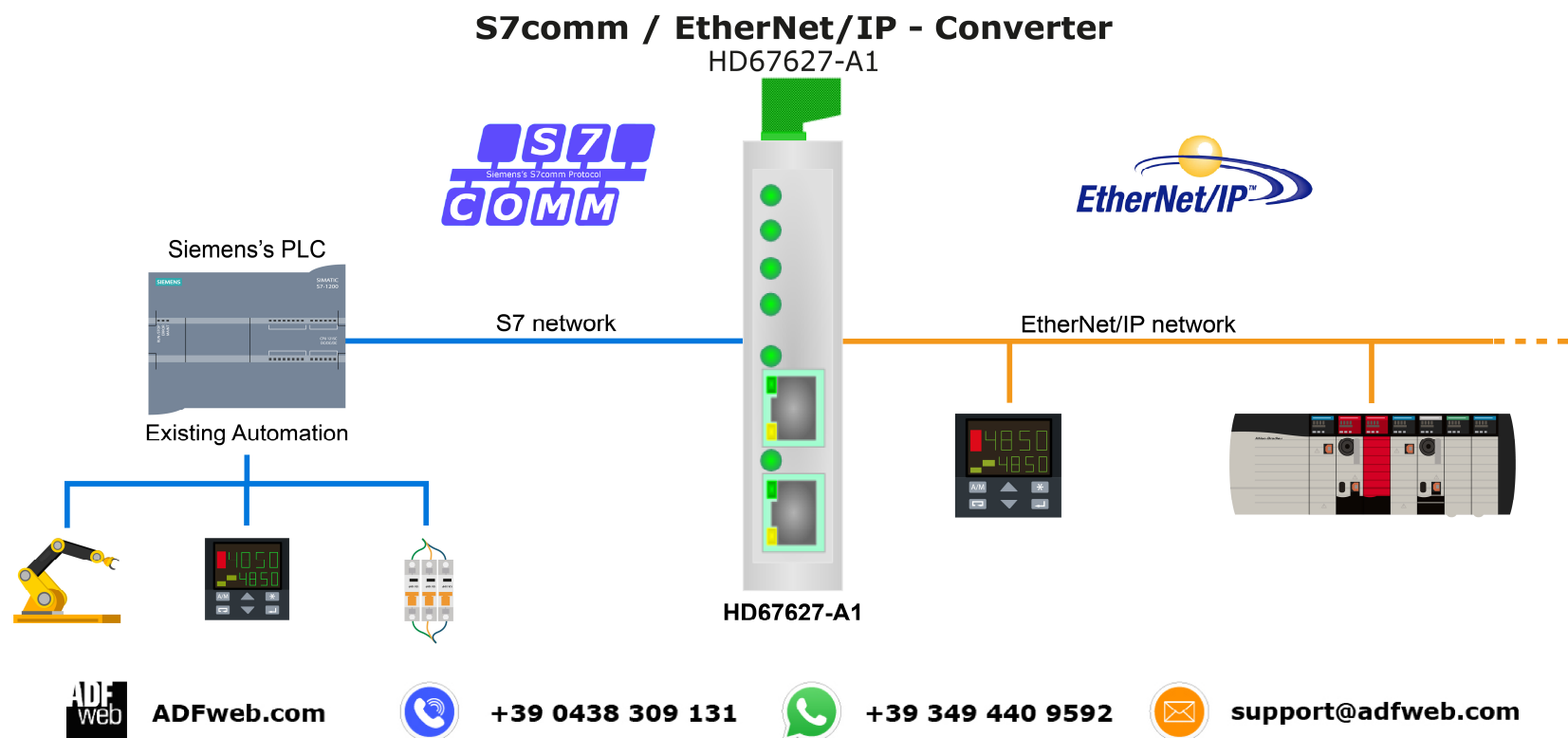


This symbol indicates that non-observance of the safety instructions is a danger for people that could lead to serious injury or death and / or the possibility of damage.

**CE CONFORMITY**

The declaration is made by our company. You can send an email to [support@adfweb.com](mailto:support@adfweb.com) or give us a call if you need it.

## EXAMPLES OF CONNECTION:



## CONNECTION SCHEME:

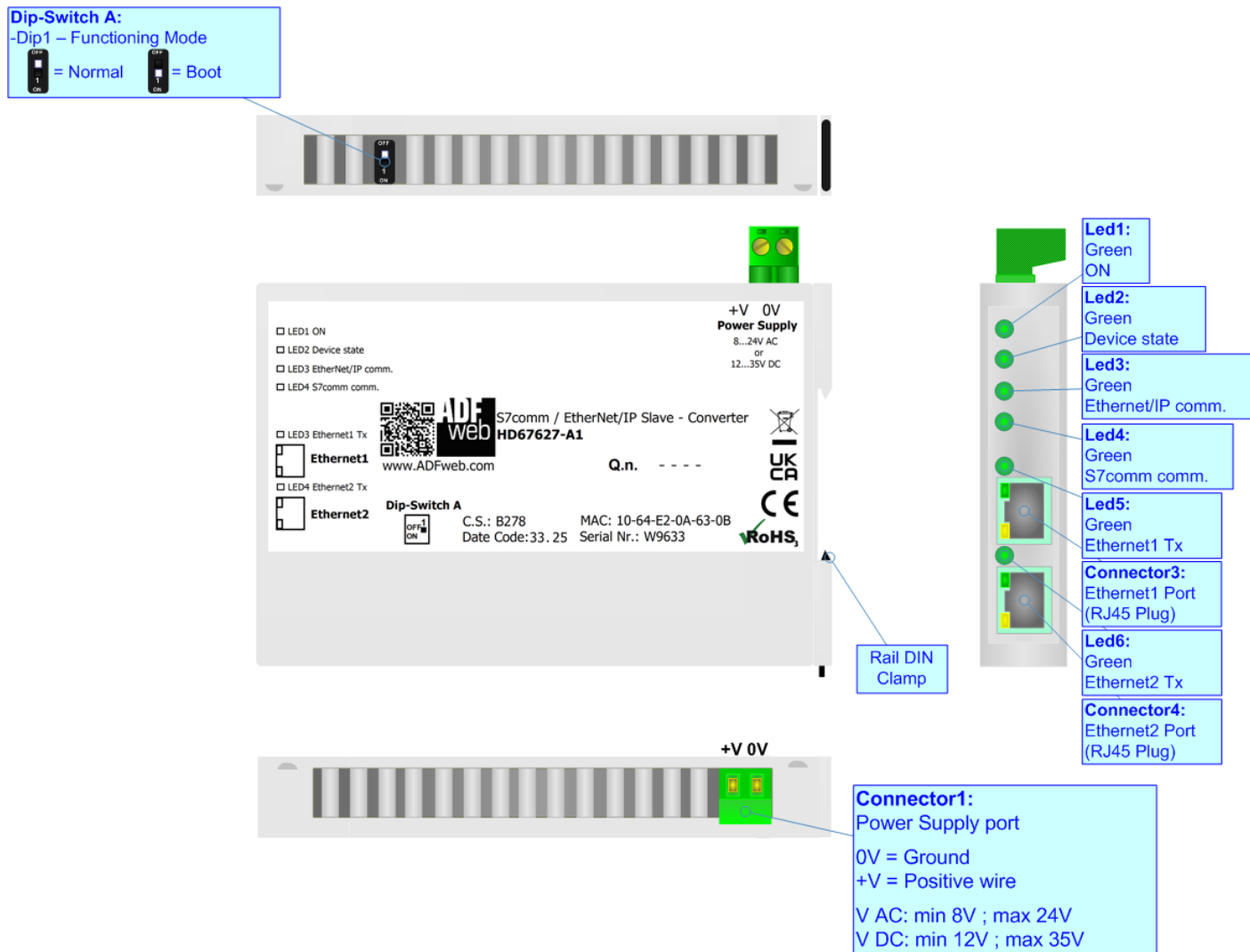


Figure 1: Connection scheme for HD67627-A1

**CHARACTERISTICS:**

The HD67627-A1 is S7comm / EtherNet/IP Slave - Converter.

It allows for the following characteristics:

- Isolation between Ethernet - Power Supply;
- Two-directional information between EtherNet/IP bus and S7comm bus;
- Mountable on 35mm Rail DIN;
- Wide power supply input range: 8...24V AC or 12...35V DC;
- Wide temperature range: -40°C / +85°C [-40°F / +185°F].



**CONFIGURATION:**

You need Compositor SW67627 software on your PC in order to perform the following:

- Define the parameters of EtherNet/IP line;
- Define the parameters of S7comm line;
- Define the S7comm requests to send to the S7comm servers;
- Update the device.

## POWER SUPPLY:

The devices can be powered at 8...24V AC and 12...35V DC. For more details see the two tables below.

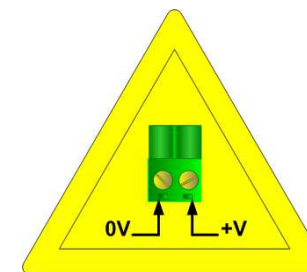
VAC 		VDC 	
Vmin	Vmax	Vmin	Vmax
8V	24V	12V	35V

Consumption at 24V DC:

Device	Consumption [W/VA]
HD67627-A1	3.5

**Caution: Do not reverse the polarity power**

**Connector1:**  
Power Supply port  
0V = Ground  
+V = Positive wire  
V AC: min 8V ; max 24V  
V DC: min 12V ; max 35V



HD67627-A1

**FUNCTION MODES:**

The device has got two function modes depending on the position of the 'Dip1 of Dip-Switch A':

- The first, with 'Dip1 of Dip-Switch A' at "OFF" position, is used for the normal working of the device.
- The second, with 'Dip1 of Dip-Switch A' at "ON" position, is used for uploading the Project and/or Firmware.

For the operations to follow for the updating, see 'UPDATE DEVICE' section.

According to the functioning mode, the LEDs will have specific functions, see 'LEDS' section.

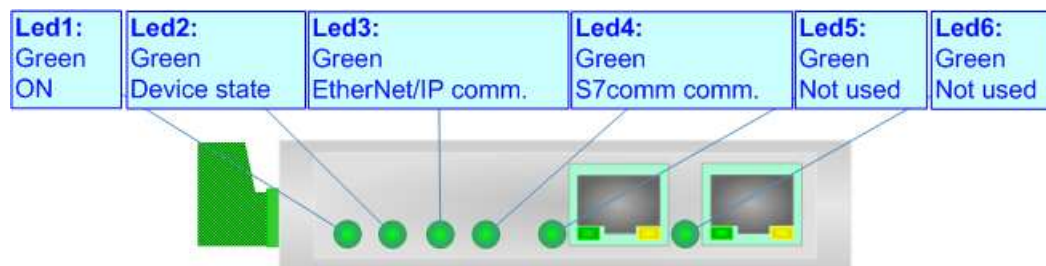




## LEDS:

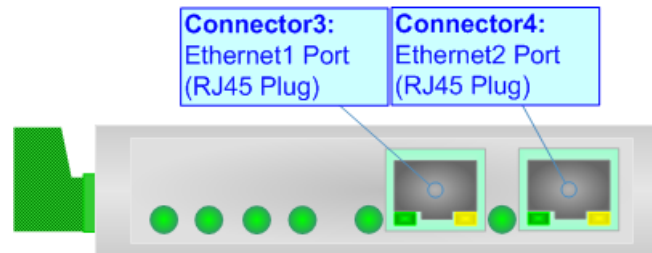
The device has got six LEDs that are used to give information about the functioning status.  
The various meanings of the LEDs are described in the table below.

LED	Normal Mode	Boot Mode
1: ON [supply voltage ] (green)	<b>ON:</b> Device powered <b>OFF:</b> Device not powered	<b>ON:</b> Device powered <b>OFF:</b> Device not powered
2: Device State (green)	Blinks slowly (~1Hz)	<b>Blinks quickly:</b> Boot state <b>Blinks very slowly (~0.5Hz):</b> update in progress
3: EtherNet/IP comm. (green)	It blinks when EtherNet/IP communication is running	<b>Blinks quickly:</b> Boot state <b>Blinks very slowly (~0.5Hz):</b> update in progress
4: S7comm comm. (green)	It blinks when S7comm communication is running	<b>Blinks quickly:</b> Boot state <b>Blinks very slowly (~0.5Hz):</b> update in progress
5: Not used (green)	OFF	<b>Blinks quickly:</b> Boot state <b>Blinks very slowly (~0.5Hz):</b> update in progress
6: Not used (green)	OFF	<b>Blinks quickly:</b> Boot state <b>Blinks very slowly (~0.5Hz):</b> update in progress



**ETHERNET:**

EtherNet/IP connection, S7comm connection and the updating of the converters must be made using Connector3 and/or Connector4 of the HD67627-A1 with at least a Category 5E cable. The maximum length of the cable should not exceed 100m. The cable has to conform to the T568 norms relative to connections in cat.5 up to 100 Mbps. To connect the device to an Hub/Switch is recommended the use of a straight cable, to connect the device to a PC/PLC/other is recommended the use of a cross cable.



## USE OF COMPOSITOR SW67627:

To configure the Converter, use the available software that runs with Windows called SW67627. It is downloadable on the site [www.adfweb.com](http://www.adfweb.com) and its operation is described in this document. *(This manual is referenced to the last version of the software present on our web site)*. The software works with MSWindows (XP, Vista, Seven, 8, 10 or 11; 32/64bit).

When launching the SW67627, the window below appears (Fig. 2).



### Note:

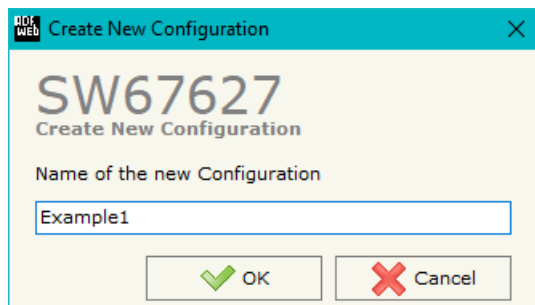
It is necessary to have installed .Net Framework 4.



Figure 2: Main window for SW67627

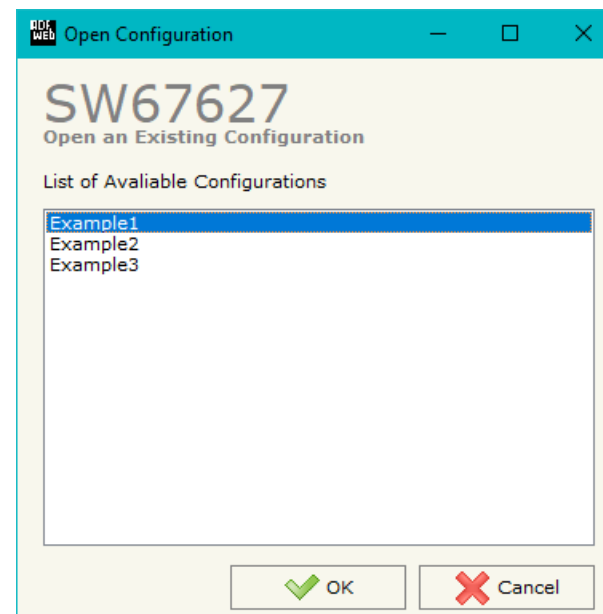
**NEW CONFIGURATION / OPEN CONFIGURATION:**

The “**New Configuration**” button creates the folder which contains the entire device’s configuration.




A device’s configuration can also be imported or exported:

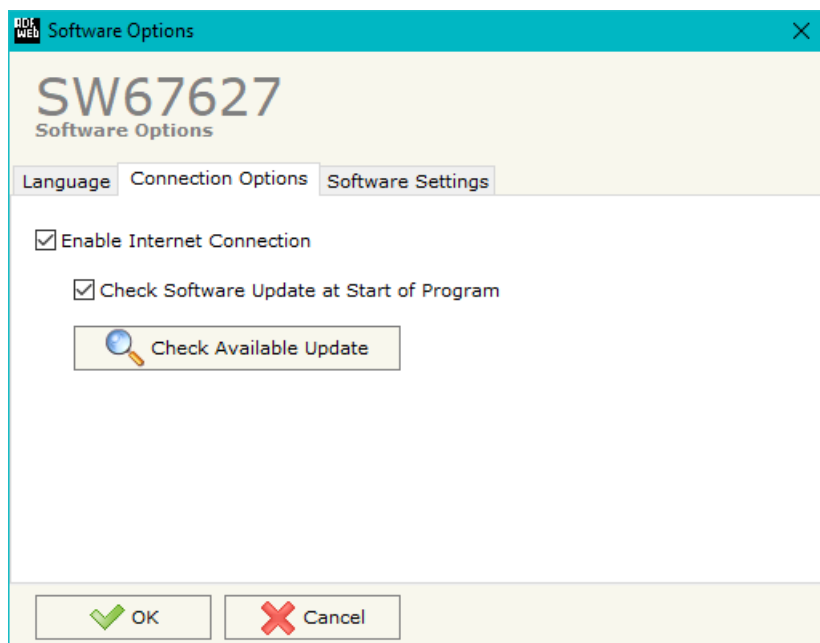
- To clone the configurations of a programmable “S7comm / EtherNet/IP Slave - Converter” in order to configure another device in the same manner, it is necessary to maintain the folder and all its contents;
- To clone a project in order to obtain a different version of the project, it is sufficient to duplicate the project folder with another name and open the new folder with the button “**Open Configuration**”.



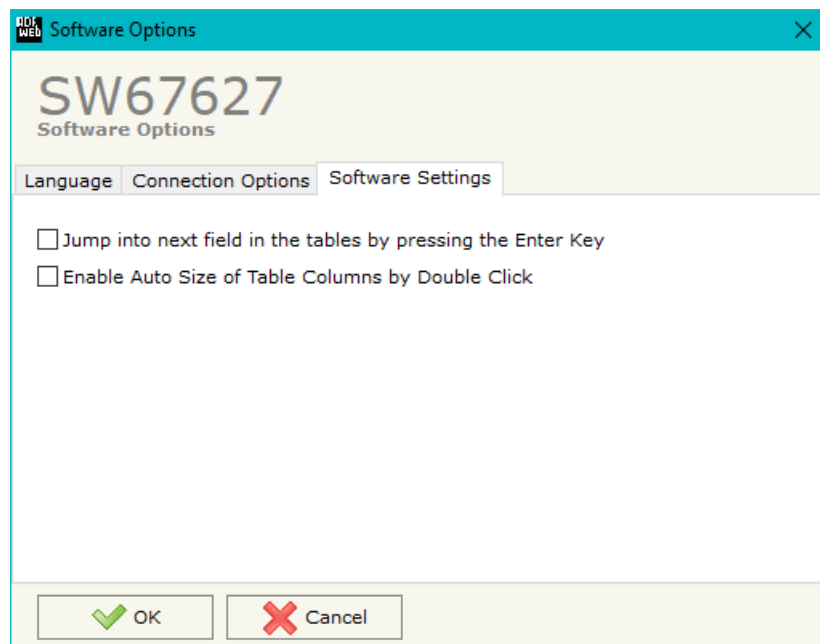
## SOFTWARE OPTIONS:

By pressing the “**Settings**” () button there is the possibility to change the language of the software and check the updatings for the compositor.

In the section “Language” it is possible to change the language of the software.



In the section “Connection Options”, it is possible to check if there are some updatings of the software compositor in ADFweb.com website. Checking the option “**Check Software Update at Start of Program**”, the SW67627 checks automatically if there are updatings when it is launched.



In the section “Software Settings”, it is possible to enable/disable some keyboard’s commands for an easier navigation inside the tables contained in the different sections of the software.

**SET COMMUNICATION:**

This section defines the fundamental communication parameter of two buses, S7comm and EtherNet/IP.

By pressing the "**Set Communication**" button from the main window of SW67627 (Fig. 2) the window "Set Communication" appears (Fig. 3).

The means of the fields for "Ethernet Connection" are:

- In the field "**Device Name (Hostname)**" the Hostname to assign to the converter is defined;
- If the field "**Obtain an IP Address Automatically (DHCP for Cable Connection)**" is checked, DHCP for LAN connection is enabled;
- If the field "**Enable DNS**" is checked, DNS protocol is enabled;
- In the field "**Primary DNS**" the IP Address of the primary DNS server is defined;
- In the field "**Secondary DNS**" the IP Address of the secondary DNS server is defined.

The means of the fields for "S7comm" are:

- In the fields "**IP Address**" the IP address for S7comm side of the converter is defined;
- In the fields "**SubNet Mask**" the SubNet Mask for S7comm side of the converter is defined;
- In the fields "**Gateway**" the default gateway of the net is defined. This feature can be enabled or disabled pressing the Check Box field. This feature is used for going out of the net.

**SW67627**  
Set Communication Setting

**1. Ethernet Connection**

Device Name (Hostname)

☐ Obtain an IP Address Automatically (DHCP for Cable Connection)

☐ Obtain an IP Address Automatically (DHCP for Wi-Fi Connection)

☐ Enable DNS

Primary DNS

Secondary DNS

**2. S7comm**

IP Address

SubNet Mask

☐ Gateway

**3. EtherNet/IP**

IP Address

SubNet Mask

☐ Gateway

Diagnostics Port

Number Bytes Input

Number Bytes Output

Figure 3: "Set Communication" window

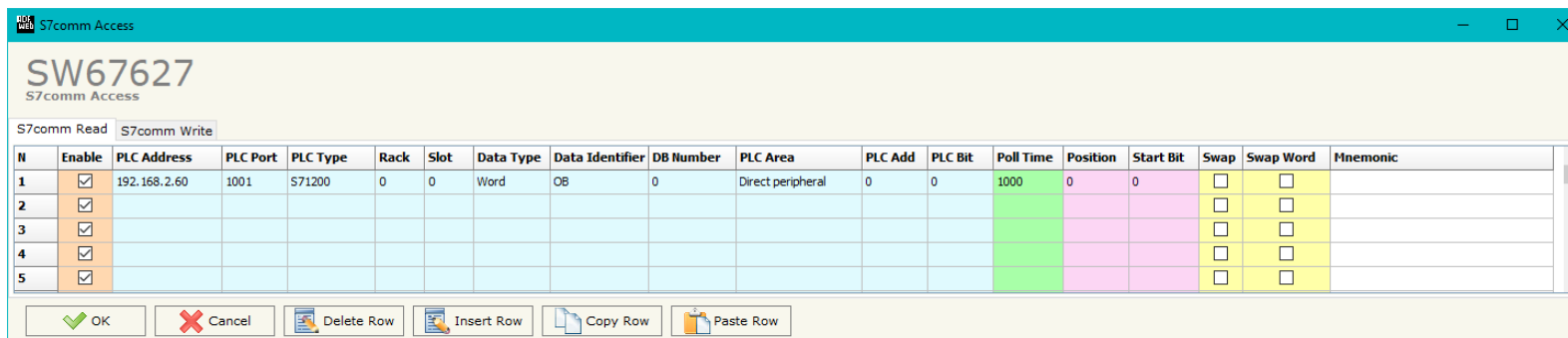
The means of the fields for "EtherNet/IP" are:

- In the fields "**IP Address**" the IP address for EtherNet/IP side of the converter is defined;
- In the fields "**SubNet Mask**" the SubNet Mask for EtherNet/IP side of the converter is defined;
- In the fields "**Gateway**" the default gateway of the net is defined. This feature can be enabled or disabled pressing the Check Box field. This feature is used for going out of the net;
- In the field "**Diagnostic Port**" the port used for diagnostic is defined;
- In the field "**Number Bytes Input**" the number of input bytes of the converter is defined;
- In the field "**Number Bytes Output**" the number of output bytes of the converter is defined.



## S7COMM ACCESS:

By Pressing the "**S7comm Access**" button from the main window of SW67627 (Fig. 2), the window "Set S7comm Access" appears (Fig. 4). The window is divided in two parts, the "**S7comm Read**" that contains the data that the converter reads from the S7comm servers and "**S7comm Write**" that contains the data that the converter writes into the S7comm servers.



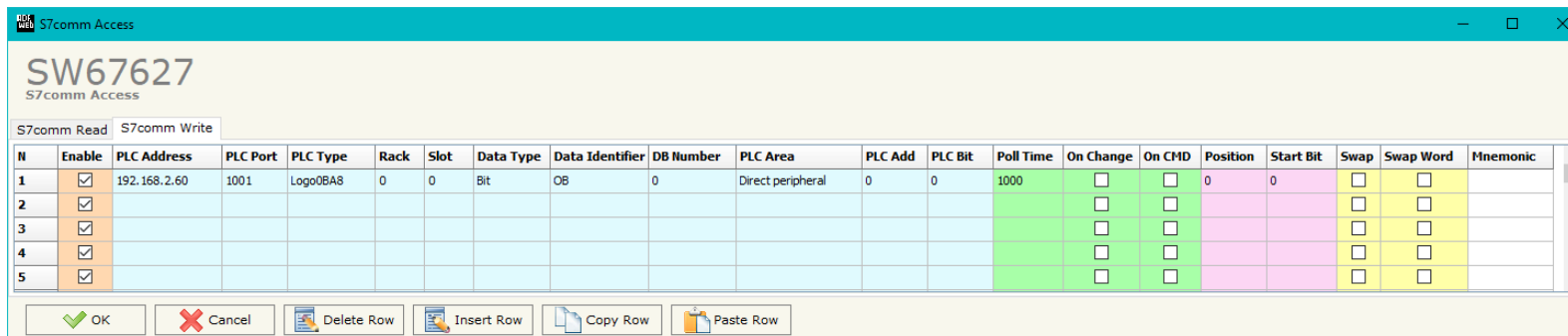
N	Enable	PLC Address	PLC Port	PLC Type	Rack	Slot	Data Type	Data Identifier	DB Number	PLC Area	PLC Add	PLC Bit	Poll Time	Position	Start Bit	Swap	Swap Word	Mnemonic
1	<input checked="" type="checkbox"/>	192.168.2.60	1001	S71200	0	0	Word	OB	0	Direct peripheral	0	0	1000	0	0	<input type="checkbox"/>	<input type="checkbox"/>	
2	<input checked="" type="checkbox"/>															<input type="checkbox"/>	<input type="checkbox"/>	
3	<input checked="" type="checkbox"/>															<input type="checkbox"/>	<input type="checkbox"/>	
4	<input checked="" type="checkbox"/>															<input type="checkbox"/>	<input type="checkbox"/>	
5	<input checked="" type="checkbox"/>															<input type="checkbox"/>	<input type="checkbox"/>	

Figure 4a: "S7comm Access → S7comm Read" window

The means of the fields in the window "S7comm Read" are the following:

- If the field "**Enable**" is checked, the S7comm variable is enabled;
- In the field "**PLC Address**" the IP address of the PLC that contains the data to be read is defined;
- In the field "**PLC Port**" the port used for S7comm communication is defined;
- In the field "**PLC Type**" the family of the PLC is defined;
- In the field "**Rack**" the Rack's ID of the PLC is defined;
- In the field "**Slot**" the Slot's ID is defined;
- In the field "**Data Type**" the data format of the variable to read is defined;
- In the field "**Data Identifier**" the identifier of the variable to read is defined;
- In the field "**DB Number**" the number of the DB of the PLC to read is defined;
- In the field "**PLC Area**" the memory area where the data is located inside the PLC is defined;
- In the field "**PLC Add**" the starting memory address where the data is located is defined;
- In the field "**PLC Bit**" the starting bit of the selected PLC Address is defined;

- In the field "**Poll Time**" the frequency of the request is defined (in ms);
- In the field "**Position**" the starting byte of the EtherNet/IP memory array from which mapping the data read is defined;
- In the field "**Start Bit**" is used for the "Bit" data. It is possible to select the bit of the selected Position where mapping the data;
- If the field "**Swap**" is checked, the bytes' order is reversed;
- If the field "**Swap Word**" is checked, the words' order is reversed;
- In the field "**Mnemonic**" a description of the data inserted in the row is defined.



N	Enable	PLC Address	PLC Port	PLC Type	Rack	Slot	Data Type	Data Identifier	DB Number	PLC Area	PLC Add	PLC Bit	Poll Time	On Change	On CMD	Position	Start Bit	Swap	Swap Word	Mnemonic
1	<input checked="" type="checkbox"/>	192.168.2.60	1001	LogoBAA8	0	0	Bit	OB	0	Direct peripheral	0	0	1000	<input type="checkbox"/>	<input type="checkbox"/>	0	0	<input type="checkbox"/>	<input type="checkbox"/>	
2	<input checked="" type="checkbox"/>													<input type="checkbox"/>	<input type="checkbox"/>			<input type="checkbox"/>	<input type="checkbox"/>	
3	<input checked="" type="checkbox"/>													<input type="checkbox"/>	<input type="checkbox"/>			<input type="checkbox"/>	<input type="checkbox"/>	
4	<input checked="" type="checkbox"/>													<input type="checkbox"/>	<input type="checkbox"/>			<input type="checkbox"/>	<input type="checkbox"/>	
5	<input checked="" type="checkbox"/>													<input type="checkbox"/>	<input type="checkbox"/>			<input type="checkbox"/>	<input type="checkbox"/>	

Buttons: OK, Cancel, Delete Row, Insert Row, Copy Row, Paste Row

Figure 4b: "S7comm Access → S7comm Write" window

The means of the fields in the window "S7comm Write" are the following:

- If the field "**Enable**" is checked, the S7comm variable is enabled;
- In the field "**PLC Address**" the IP address of the PLC that contains the data to be read is defined;
- In the field "**PLC Port**" the port used for S7comm communication is defined;
- In the field "**PLC Type**" the family of the PLC is defined;
- In the field "**Rack**" the Rack's ID of the PLC is defined;
- In the field "**Slot**" the Slot's ID is defined;
- In the field "**Data Type**" the data format of the variable to write is defined;
- In the field "**Data Identifier**" the identifier of the variable to write is defined;
- In the field "**DB Number**" the number of the DB of the PLC to write is defined;
- In the field "**PLC Area**" the memory area where the data is located inside the PLC is defined;
- In the field "**PLC Add**" the starting memory address where the data is located is defined;
- In the field "**PLC Bit**" the starting bit of the selected PLC Address is defined;
- In the field "**Poll Time**" the frequency of the request is defined (in ms);
- By checking the field "**On Change**" the S7comm write request is sent only if EtherNet/IP data are changed;
- By checking the field "**On CMD**" the S7comm write request is sent when a EtherNet/IP writing for the selected variable is received;
- In the field "**Position**" the starting byte of the EtherNet/IP memory array from which taking the data to write is defined;
- The field "**Start Bit**" is used for the "Bit" data. It is possible to select the bit of the selected Position from which taking the data;
- If the field "**Swap**" is checked, the bytes' order is reversed;

- If the field "**Swap W**" is checked, the words' order is reversed;
- In the field "**Mnemonic**" a description of the data inserted in the row is defined.

## UPDATE DEVICE:

By pressing the **"Update Device"** button, it is possible to load the created Configuration into the device; and also the Firmware, if necessary. This by using the Ethernet port.

If you don't know the actual IP address of the device you have to use this procedure:

- Turn OFF the Device;
- Put Dip1 of 'Dip-Switch A' in ON position;
- Turn ON the device
- Connect the Ethernet cable;
- Insert the IP **"192.168.2.205"**;
- Select which operations you want to do;
- Press the **"Execute update firmware"** button to start the upload;
- When all the operations are "OK" turn OFF the Device;
- Put Dip1 of 'Dip-Switch A' in OFF position;
- Turn ON the device.

If you know the actual IP address of the device, you have to use this procedure:

- Turn ON the Device with the Ethernet cable inserted;
- Insert the actual IP of the Converter;
- Select which operations you want to do;
- Press the **"Execute update firmware"** button to start the upload;
- When all the operations are "OK" the device automatically goes at Normal Mode.

At this point the configuration/firmware on the device is correctly updated.

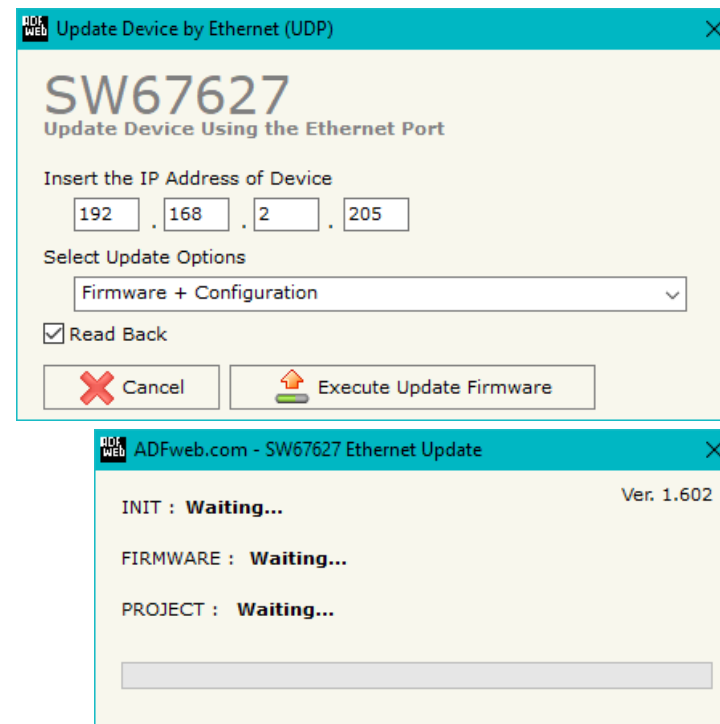


Figure 5: "Update device" windows


**Note:**

When you receive the device, for the first time, you also have to update the Firmware in the HD67627 device.


**Warning:**

If Fig. 6 appears when you try to do the Update try these points before seeking assistance:

- Try to repeat the operations for the updating;
- Try with another PC;
- Try to restart the PC;
- Check the LAN settings;
- If you are using the program inside a Virtual Machine, try to use in the main Operating System;
- If you are using Windows Seven, Vista, 8, 10 or 11 make sure that you have the administrator privileges;
- In case you have to program more than one device, using the "UDP Update", you have to cancel the ARP table every time you connect a new device on Ethernet. For do this you have to launch the "Command Prompt" and write the command "arp -d". Pay attention that with Windows Vista, Seven, 8, 10 or 11 you have to launch the "Command Prompt" with Administrator Rights;
- Pay attention at Firewall lock.

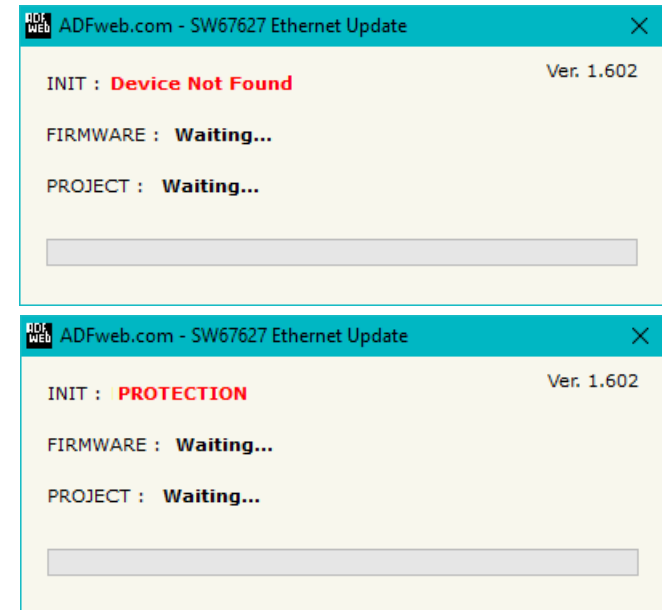


Figure 6: "Error" window


**Warning:**

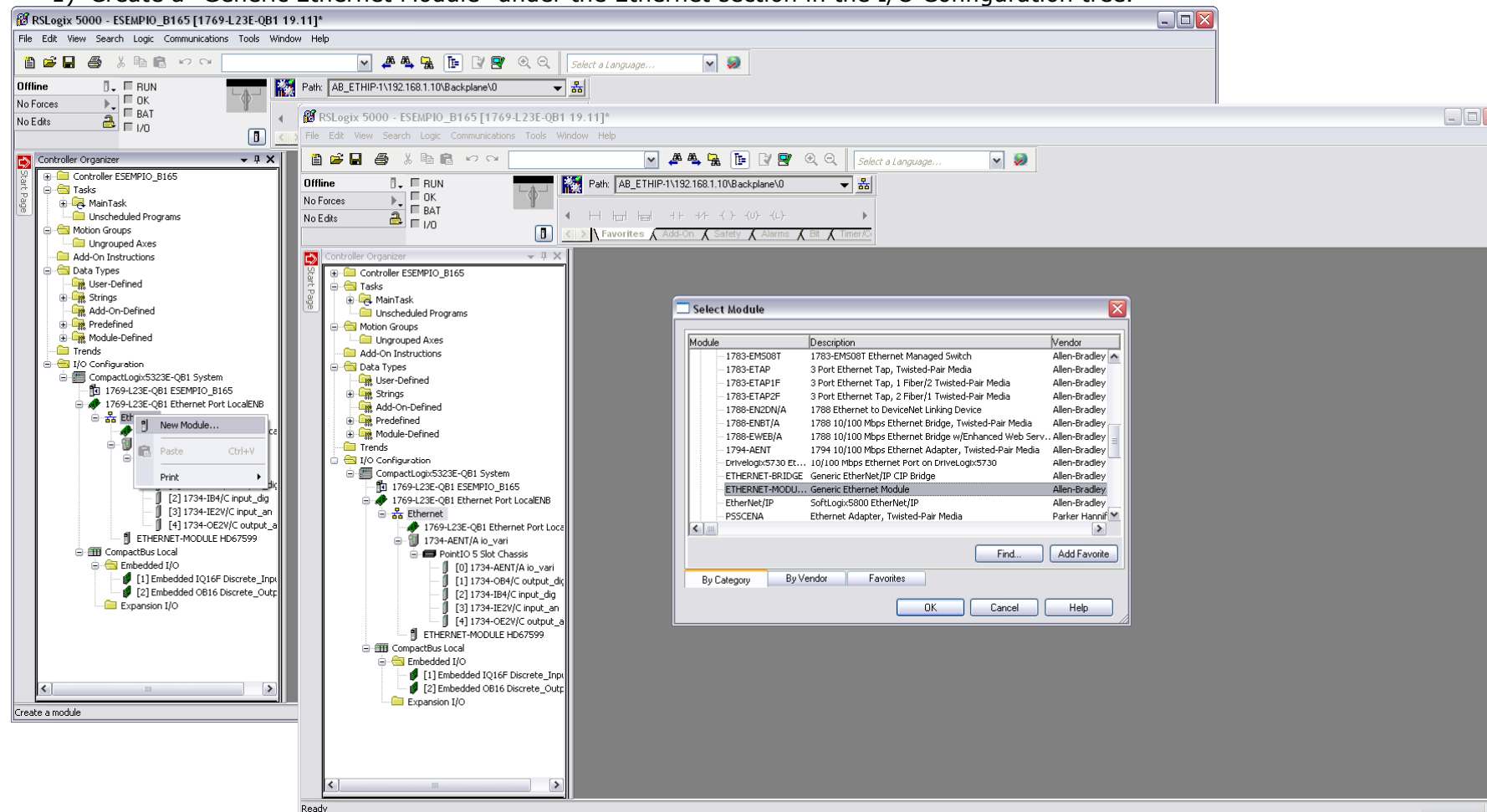
In the case of HD67627 you have to use the software "SW67627": [www.adfweb.com/download/filefold/SW67627.zip](http://www.adfweb.com/download/filefold/SW67627.zip).

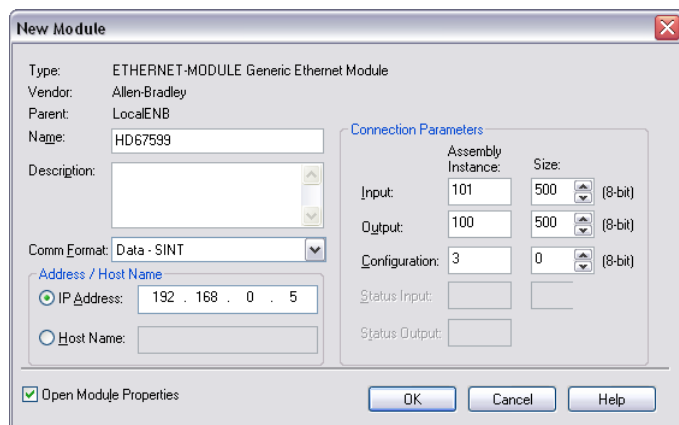
## PLC CONFIGURATION:

The configuration and commissioning of the EtherNet/IP Converter as described on the following pages was accomplished with the help of the "RSLogix 5000" software of Rockwell Automation. In case of using a control system from another supplier please attend to the associated documentation.

These are the steps to follow:

- 1) Create a "Generic Ethernet Module" under the Ethernet section in the I/O Configuration tree.





2) Edit the settings of the new Generic Ethernet Module. As shown in the screen shot below, the module was named "HD67627" and the IP-address assigned is 192.168.0.5.

For the Comm Format "Data – SINT" shall be selected as the data type.

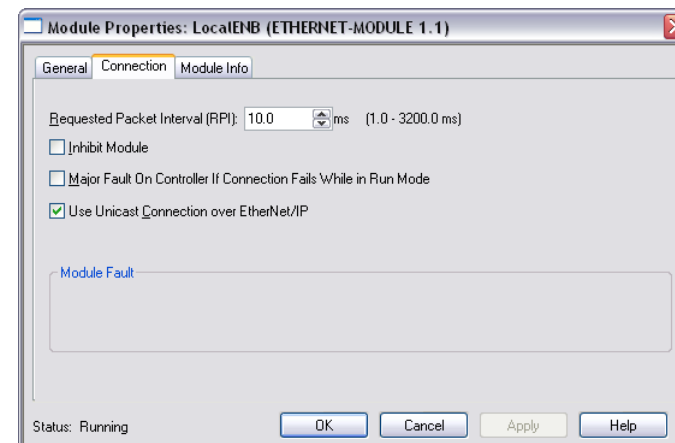
RSLogix 5000 requires a configuration assembly instance. Both modules do not provide a configuration assembly instance. Therefore it is allowed to select an instance of 3 and to set the value to zero.

3) The setting of 10msec for the "Requested Packet Interval (RPI)" is adequate but it is possible to change this value as required. A lower value of 2ms shall not be selected.



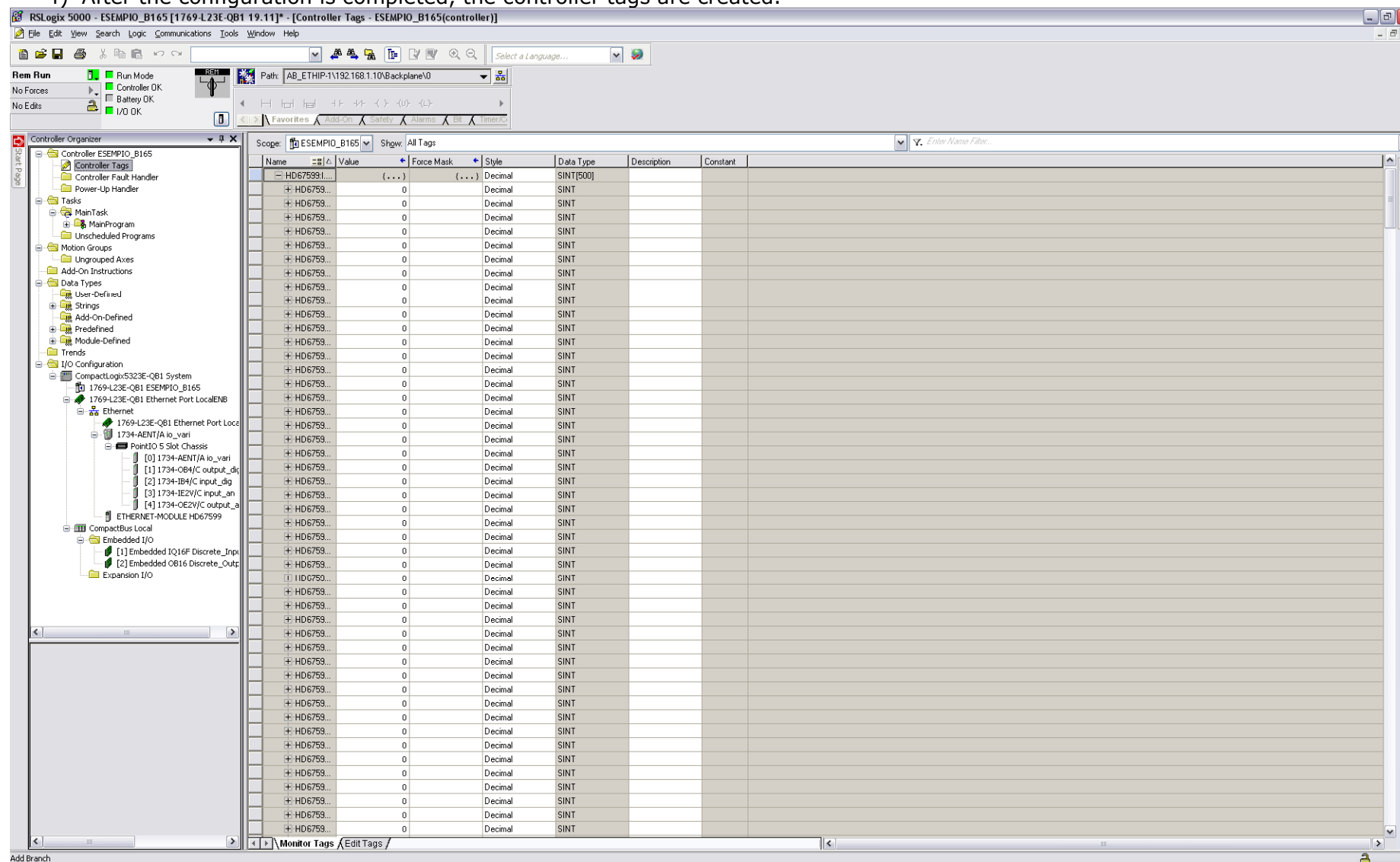
**Warning:**

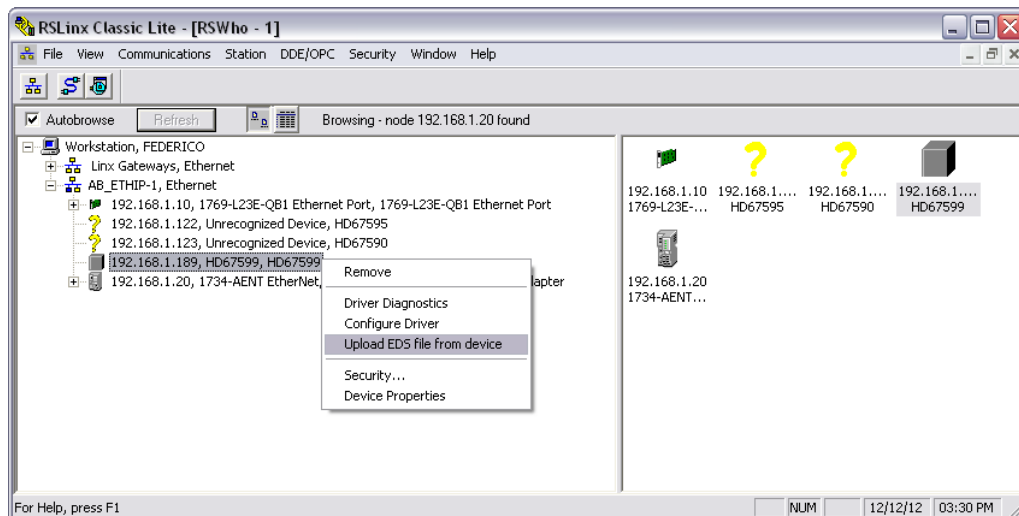
The field "Use Unicast Connection over EtherNet/IP" must be checked.



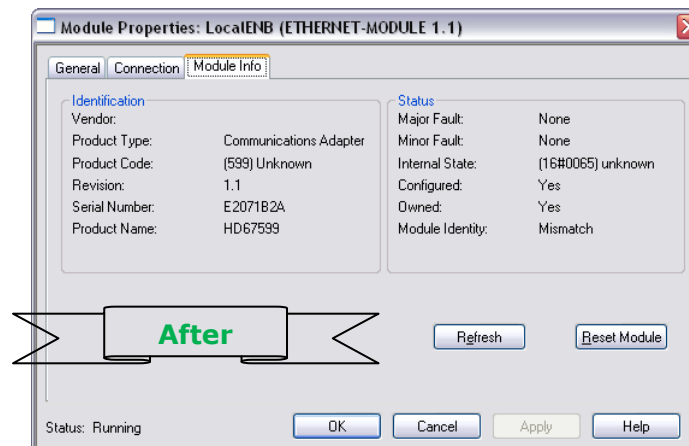
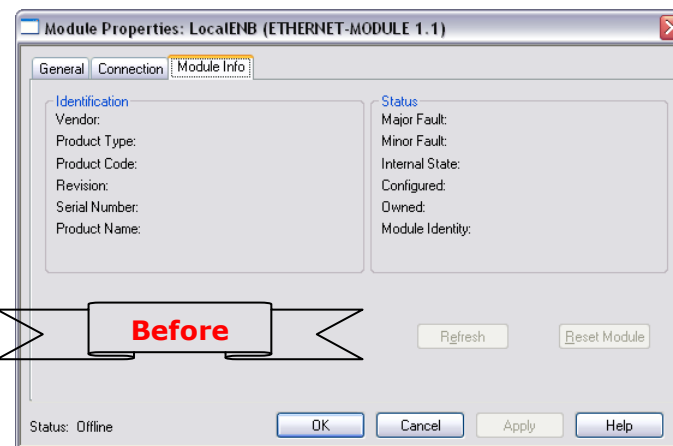


4) After the configuration is completed, the controller tags are created.





5) With "RSLinks Classic Lite", after have done a network scan (RSWho), and finding the EtherNet/IP device, it is possible to load the EDS file for the device in order to have the "Module Info" compiled.



## MECHANICAL DIMENSIONS:

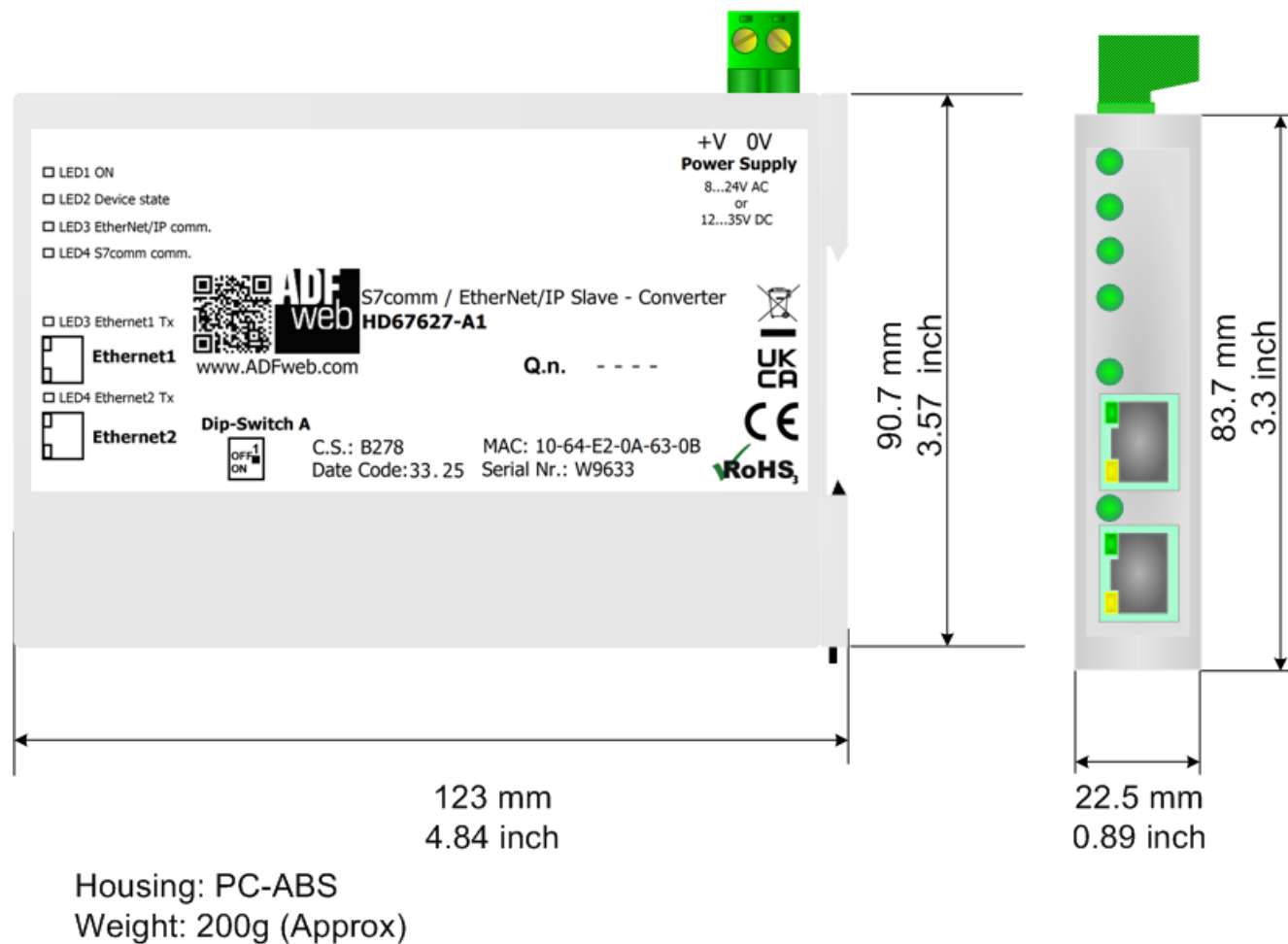
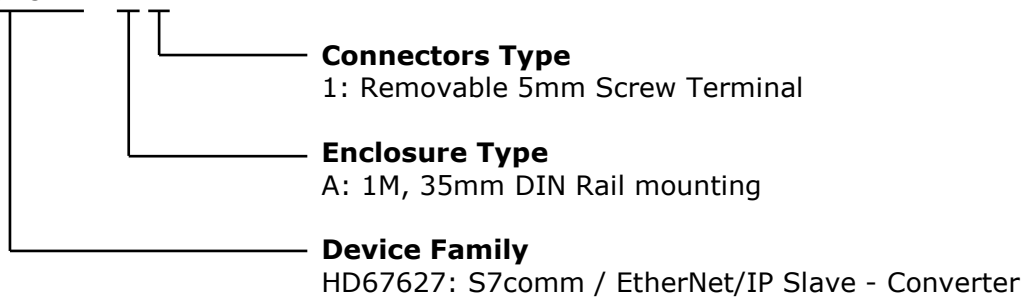


Figure 7: Mechanical dimensions scheme for HD67627-A1

## ORDERING INFORMATION:

The ordering part number is formed by a valid combination of the following:

### **HD67627 - xx**



Order Code: **HD67627-A1** - S7comm / EtherNet/IP Slave - Converter

## ACCESSORIES:

Order Code: **AC34011** - 35mm Rail DIN - Power Supply 220/240V AC 50/60Hz – 12 V DC

Order Code: **AC34012** - 35mm Rail DIN - Power Supply 220/240V AC 50/60Hz – 24 V DC

**DISCLAIMER:**

All technical content within this document can be modified without notice. The content of the document is a under continual renewal. For losses due to fire, earthquake, third party access or other accidents, or intentional or accidental abuse, misuse, or use under abnormal conditions repairs are charged to the user. ADFweb.com S.r.l. will not be liable for accidental loss of use or inability to use this product, such as loss of business income. ADFweb.com S.r.l. shall not be liable for consequences of improper use.

**OTHER REGULATIONS AND STANDARDS:****WEEE INFORMATION**

Disposal of old electrical and electronic equipment (as in the European Union and other European countries with separate collection systems).

— This symbol on the product or on its packaging indicates that this product may not be treated as household rubbish. Instead, it should be taken to an applicable collection point for the recycling of electrical and electronic equipment. If the product is disposed correctly, you will help prevent potential negative environmental factors and impact of human health, which could otherwise be caused by inappropriate disposal. The recycling of materials will help to conserve natural resources. For more information about recycling this product, please contact your local city office, your household waste disposal service or the shop where you purchased the product.

**RESTRICTION OF HAZARDOUS SUBSTANCES DIRECTIVE**

The device respects the 2002/95/EC Directive on the restriction of the use of certain hazardous substances in electrical and electronic equipment (commonly referred to as Restriction of Hazardous Substances Directive or RoHS).

**CE MARKING**

The product conforms with the essential requirements of the applicable EC directives.

## WARRANTIES AND TECHNICAL SUPPORT:

For fast and easy technical support for your ADFweb.com SRL products, consult our internet support at [www.adfweb.com](http://www.adfweb.com). Otherwise contact us at the address [support@adfweb.com](mailto:support@adfweb.com)

## RETURN POLICY:

If while using your product you have any problem and you wish to exchange or repair it, please do the following:

- Obtain a Product Return Number (PRN) from our internet support at [www.adfweb.com](http://www.adfweb.com). Together with the request, you need to provide detailed information about the problem.
- Send the product to the address provided with the PRN, having prepaid the shipping costs (shipment costs billed to us will not be accepted).

If the product is within the warranty of twelve months, it will be repaired or exchanged and returned within three weeks. If the product is no longer under warranty, you will receive a repair estimate.



**ADFweb.com S.r.l.**  
Via Strada Nuova, 17  
IT-31010 Mareno di Piave  
TREVISO (Italy)  
Phone +39.0438.30.91.31  
Fax +39.0438.49.20.99  
[www.adfweb.com](http://www.adfweb.com)

