

User Manual

Revision 1.001

English

BACnet Slave / HART Master - Converter

(Order Code: HD67901-IP-A1, HD67901-MSTP-A1)

For Website information:

www.adfweb.com?Product=HD67901

For Price information:

www.adfweb.com?Price=HD67901-IP-A1

www.adfweb.com?Price=HD67901-MSTP-A1

Benefits and Main Features:

- ✚ Triple Electrical isolation
- ✚ Temperature range: -40°C/+85°C (-40°F/+185°F)

For other HART products see also the following link:

Converter HART Master to

www.adfweb.com?Product=HD67900
www.adfweb.com?Product=HD67902
www.adfweb.com?Product=HD67903
www.adfweb.com?Product=HD67904
www.adfweb.com?Product=HD67905
www.adfweb.com?Product=HD67906
www.adfweb.com?Product=HD67907
www.adfweb.com?Product=HD67908
www.adfweb.com?Product=HD67909
www.adfweb.com?Product=HD67910
www.adfweb.com?Product=HD67911
www.adfweb.com?Product=HD67912
www.adfweb.com?Product=HD67913

(Serial)
(CAN)
(CANopen)
(DeviceNet Slave)
(Ethernet)
(EtherNet/IP Slave)
(J1939)
(Modbus Slave)
(Modbus TCP Slave)
(MQTT)
(PROFIBUS Slave)
(PROFINET Slave)
(SNMP Agent)

Do you have your customer protocol? Then go to:

www.adfweb.com?Product=HD67003

Do you need to choose a device? Do you want help?

www.adfweb.com?Cmd=helpme



User Manual

INDEX:

	Page
INDEX	2
UPDATED DOCUMENTATION	2
REVISION LIST	2
WARNING	2
TRADEMARKS	2
SECURITY ALERT	3
EXAMPLE OF CONNECTION	4
CONNECTION SCHEME	5
CHARACTERISTICS	7
CONFIGURATION	7
POWER SUPPLY	8
FUNCTION MODES	9
LEDS	10
HART	11
ETHERNET	12
RS485	13
USE OF COMPOSITOR SW67901	14
NEW CONFIGURATION / OPEN CONFIGURATION	15
SOFTWARE OPTIONS	16
SET COMMUNICATION	18
HART VARIABLES	21
SET BACNET ACCESS	23
EDE FILE	24
UPDATE DEVICE	25
SCAN FUNCTION	27
WEBSERVER INTERFACE	29
MECHANICAL DIMENSIONS	33
ORDERING INFORMATIONS	34
ACCESSORIES	34
DISCLAIMER	35
OTHER REGULATIONS AND STANDARDS	35
WARRANTIES AND TECHNICAL SUPPORT	36
RETURN POLICY	36

UPDATED DOCUMENTATION:

Dear customer, we thank you for your attention and we remind you that you need to check that the following document is:

- ✚ Updated
- ✚ Related to the product you own

To obtain the most recently updated document, note the “document code” that appears at the top right-hand corner of each page of this document.

With this “Document Code” go to web page www.adfweb.com/download/ and search for the corresponding code on the page. Click on the proper “Document Code” and download the updates.

REVISION LIST:

Revision	Date	Author	Chapter	Description
1.000	18/06/2020	Ff	All	First Release
1.001	05/08/2025	Mdb	All	New design

WARNING:

ADFweb.com reserves the right to change information in this manual about our product without warning.

ADFweb.com is not responsible for any error this manual may contain.

TRADEMARKS:

All trademarks mentioned in this document belong to their respective owners.

SECURITY ALERT:**GENERAL INFORMATION**

To ensure safe operation, the device must be operated according to the instructions in the manual. When using the device, legal and safety regulation are required for each individual application. The same applies also when using accessories.

INTENDED USE

Machines and systems must be designed so the faulty conditions do not lead to a dangerous situation for the operator (i.e. independent limit switches, mechanical interlocks, etc.).

QUALIFIED PERSONNEL

The device can be used only by qualified personnel, strictly in accordance with the specifications. Qualified personnel are persons who are familiar with the installation, assembly, commissioning and operation of this equipment and who have appropriate qualifications for their job.

RESIDUAL RISKS

The device is state-of-the-art and is safe. The instruments can represent a potential hazard if they are inappropriately installed and operated by untrained personnel. These instructions refer to residual risks with the following symbol:

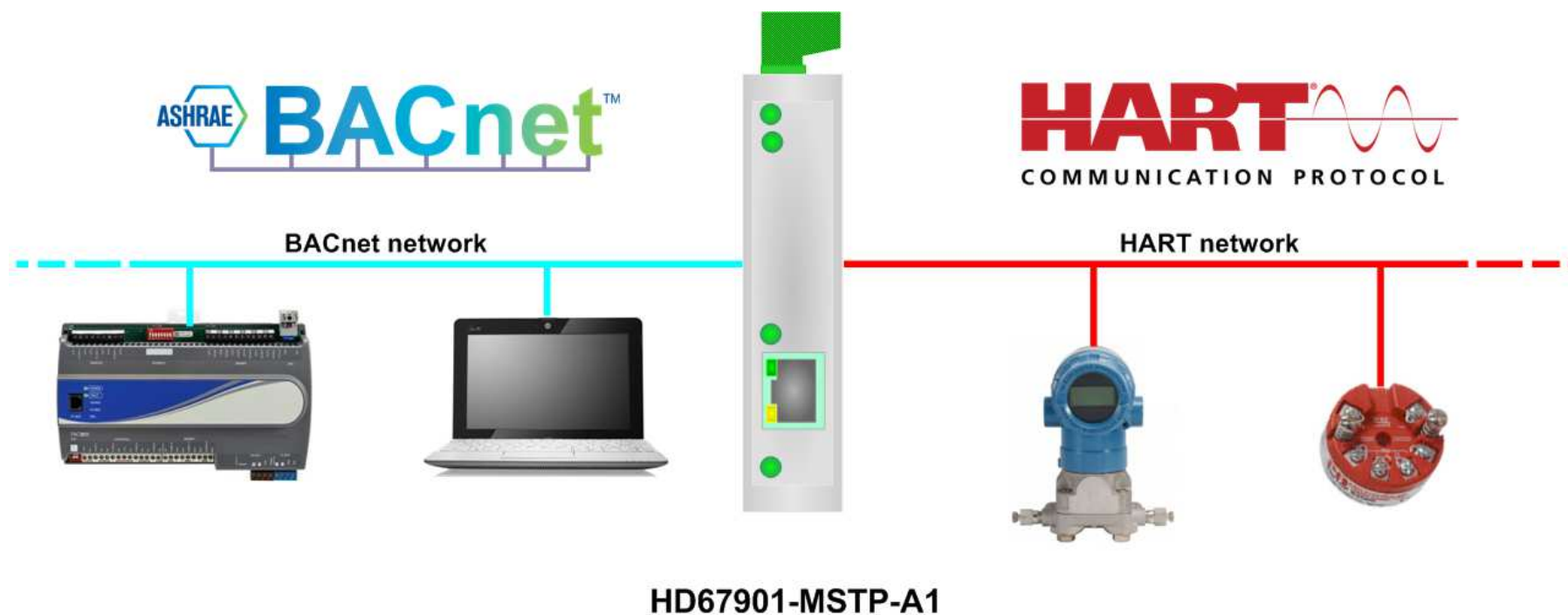


This symbol indicates that non-observance of the safety instructions is a danger for people that could lead to serious injury or death and / or the possibility of damage.

CE CONFORMITY

The declaration is made by our company. You can send an email to support@adfweb.com or give us a call if you need it.

EXAMPLES OF CONNECTION:



CONNECTION SCHEME:

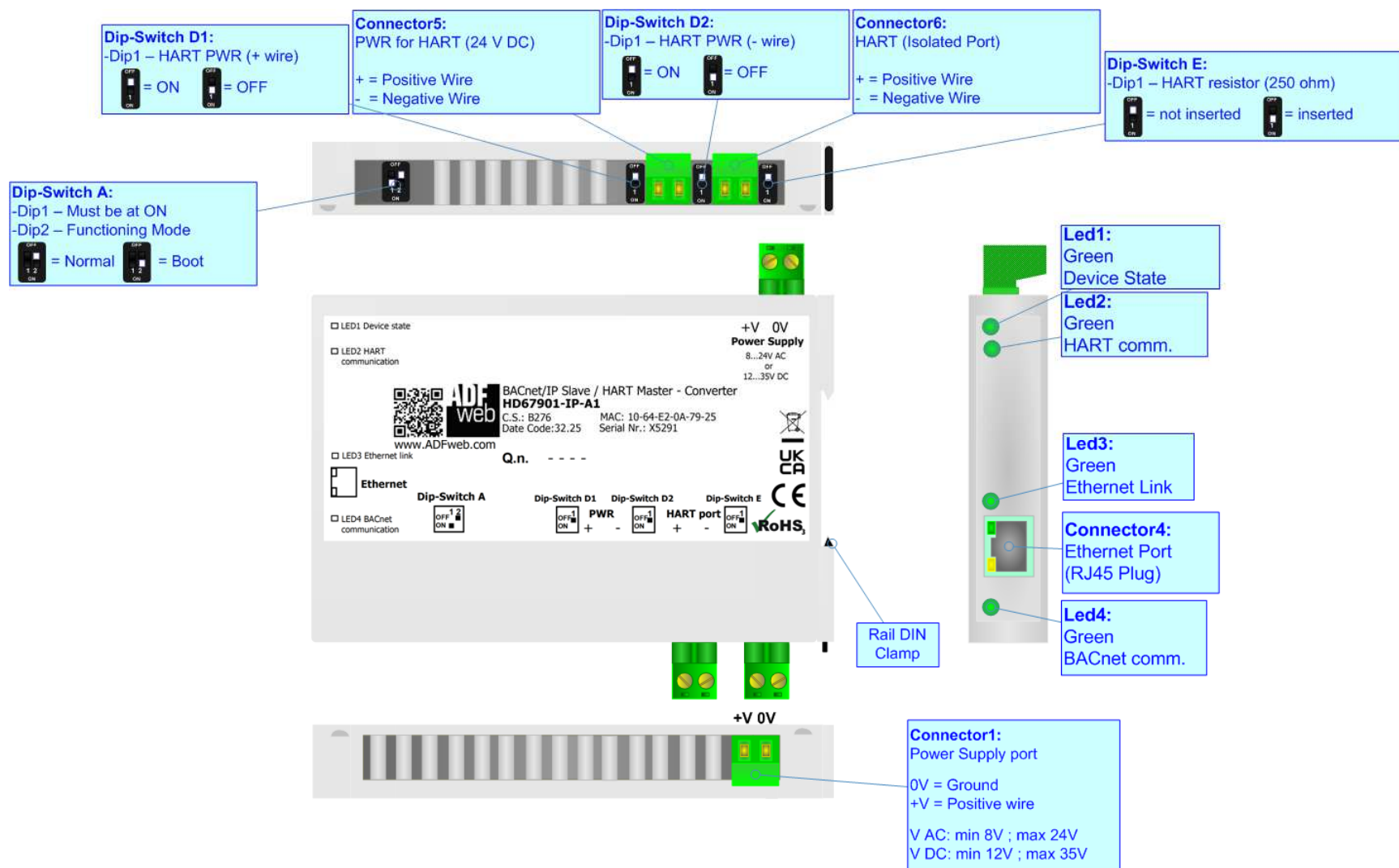


Figure 1a: Connection scheme for HD67901-IP-A1

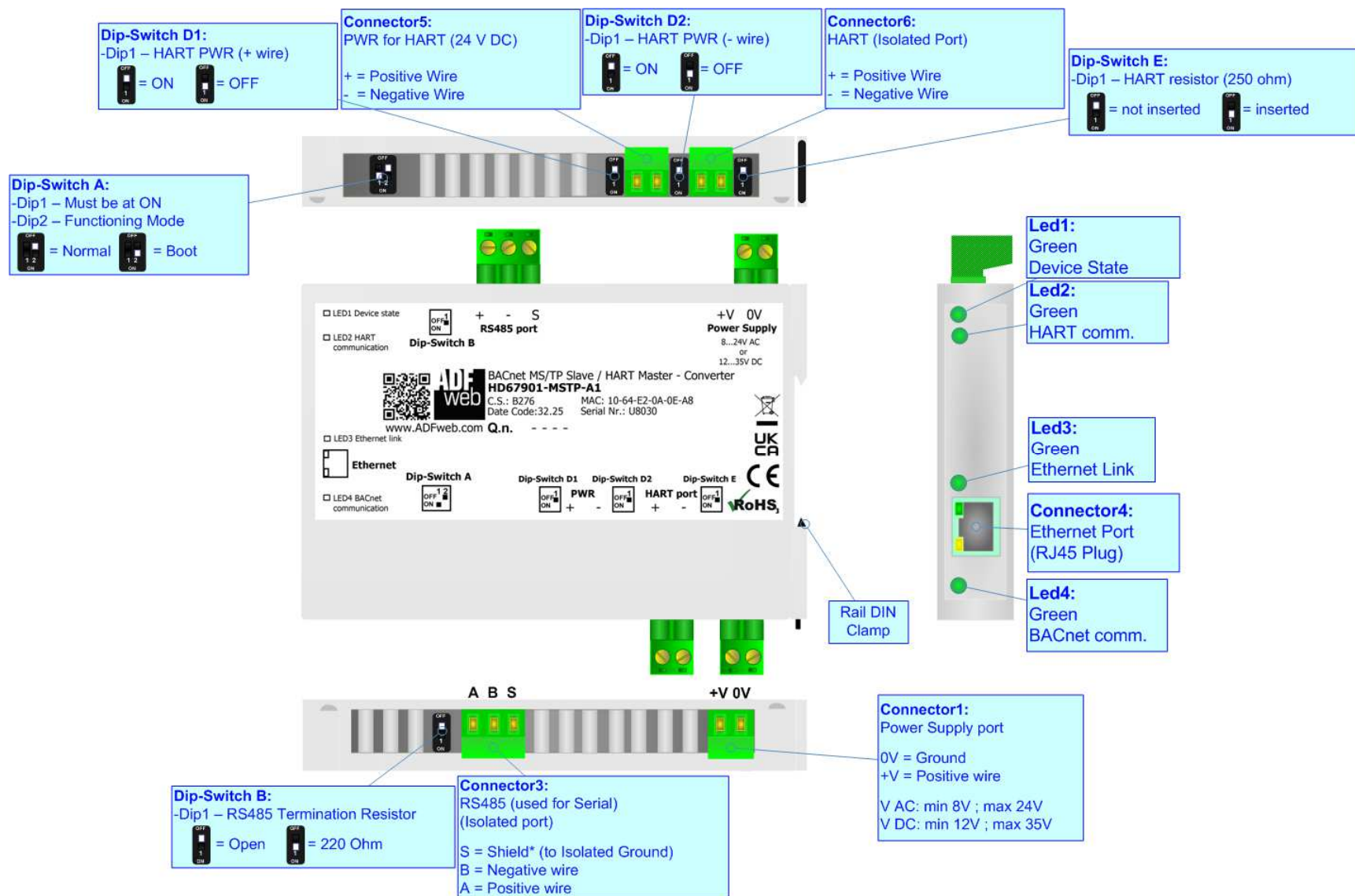


Figure 1a: Connection scheme for HD67901-MSTP-A1

CHARACTERISTICS:

The HD67901-xxxx-A1 are BACnet Slave / HART Master - Converters.

It allows for the following characteristics:

- Triple isolation between BACnet - Power Supply, BACnet - HART, HART - Power Supply;
- Two-directional information between BACnet bus and HART bus;
- Mountable on 35mm Rail DIN;
- Wide power supply input range: 8...24V AC or 12...35V DC;
- Wide temperature range: -40°C / +85°C [-40°F / +185°F].



CONFIGURATION:

You need Compositor SW67901 software on your PC in order to perform the following:

- Define the parameters of BACnet line;
- Define the parameters of HART line;
- Define HART variables in read/write;
- Update the device.

POWER SUPPLY:

The devices can be powered at 8...24V AC and 12...35V DC. For more details see the two tables below.

VAC 		VDC 	
Vmin	Vmax	Vmin	Vmax
8V	24V	12V	35V

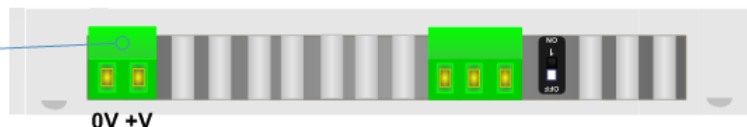
Consumption at 24V DC:

Device	Consumption [W/VA]
HD67901-xxxx-A1	3.5

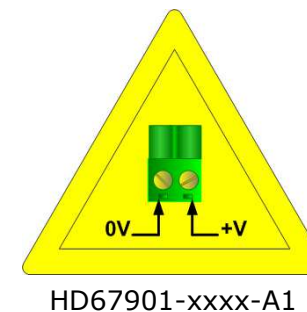
Connector1:
Power Supply port
0V = Ground
+V = Positive wire
V AC: min 8V ; max 24V
V DC: min 12V ; max 35V



Connector1:
Power Supply port
0V = Ground
+V = Positive wire
V AC: min 8V ; max 24V
V DC: min 12V ; max 35V



Caution: Do not reverse the polarity power



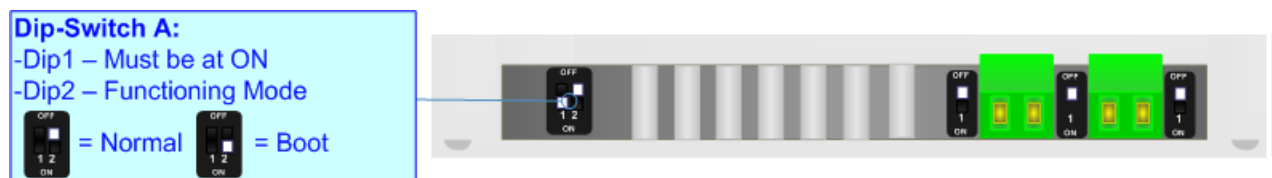
FUNCTION MODES:

The device has got two function modes depending on the position of the 'Dip2 of Dip-Switch A':

- The first, with 'Dip2 of Dip-Switch A' at "OFF" position, is used for the normal working of the device.
- The second, with 'Dip2 of Dip-Switch A' at "ON" position, is used for uploading the Project and/or Firmware.

For the operations to follow for the updating, see 'UPDATE DEVICE' section.

According to the functioning mode, the LEDs will have specific functions, see 'LEDS' section.



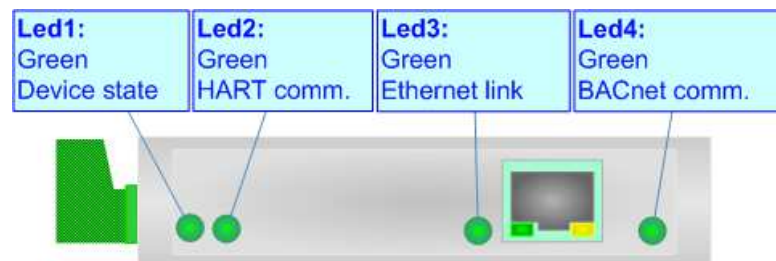
Warning:

Dip1 of 'Dip-Switch A' must be at ON position to work even if the Ethernet cable is not inserted.

LEDS:

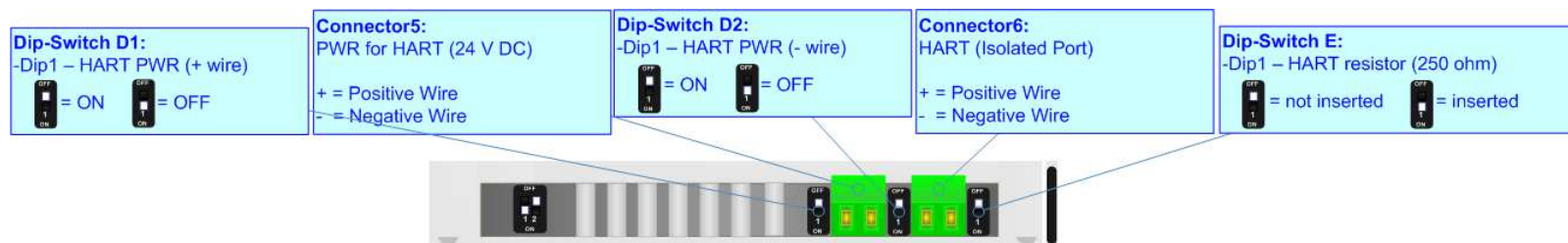
The device has got four LEDs that are used to give information about the functioning status.
The various meanings of the LEDs are described in the table below.

LED	Normal Mode	Boot Mode
1: Device State (green)	Blinks slowly ($\sim 1\text{Hz}$)	Blinks quickly: Boot state Blinks very slowly ($\sim 0.5\text{Hz}$): update in progress
2: HART comm. (green)	It blinks when HART communication is running	Blinks quickly: Boot state Blinks very slowly ($\sim 0.5\text{Hz}$): update in progress
3: Ethernet link (green)	ON: Ethernet cable connected OFF: Ethernet cable disconnected	ON: Ethernet cable connected OFF: Ethernet cable disconnected
4: BACnet comm. (green)	It blinks when a BACnet request is received	Blinks quickly: Boot state Blinks very slowly ($\sim 0.5\text{Hz}$): update in progress



HART:

"HART" is an acronym for Highway Addressable Remote Transducer. The HART Protocol makes use of Frequency Shift Keying (FSK) standard to superimpose digital communication signals at a low level on top of the 4-20mA. This enables two-way field communication to take place and makes it possible for additional information beyond just the normal process variable to be communicated to/from a smart field instrument.



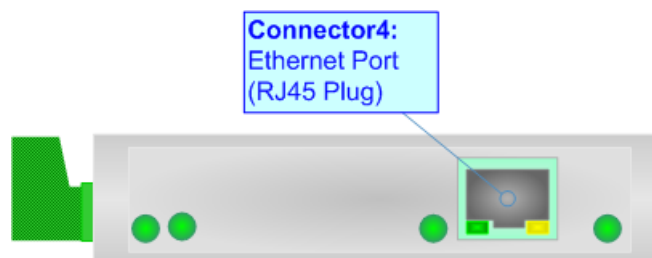
It is possible to provide the current loop for HART communication and an additional low power supply @ 24 V DC for feeding HART devices by setting Dip-Switch D1 and D2 at ON position.

Current loop for HART is required when there is not an external device in the bus that provides it.

It is possible to enable the 250 ohm HART resistor by setting dip switch E at ON position.

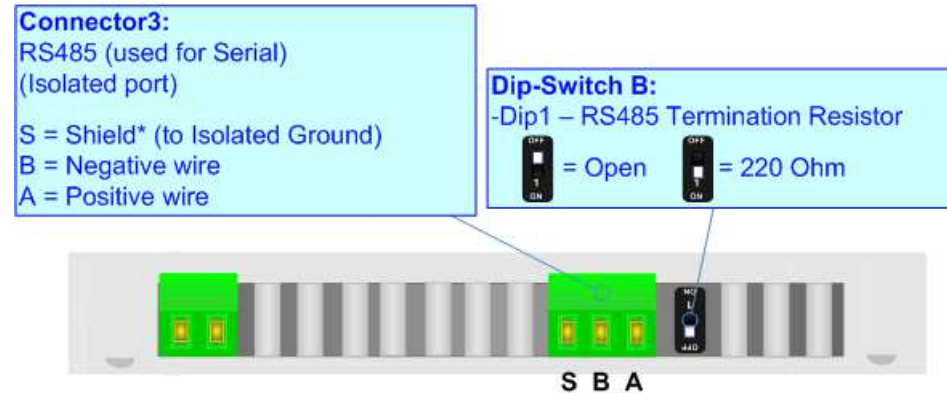
ETHERNET:

The updating of the converters and BACnet/IP communication must be made using Connector4 of the HD67901-xxxx-A1 with at least a Category 5E cable. The maximum length of the cable should not exceed 100m. The cable has to conform to the T568 norms relative to connections in cat.5 up to 100 Mbps. To connect the device to an Hub/Switch is recommended the use of a straight cable, to connect the device to a PC/PLC/other is recommended the use of a cross cable.



RS485 (for BACnet MS/TP version):

For terminate the RS485 line with a 120Ω resistor it is necessary to put ON dip 1, like in figure.



The maximum length of the cable should be 1200m (4000 feet).

Here some codes of cables:

- Belden: p/n 8132 - 2x 28AWG stranded twisted pairs conductor + foil shield + braid shield;
- Belden p/n 82842 - 2x 24AWG stranded twisted pairs conductor + foil shield + braid shield;
- Tasker: p/n C521 - 1x 24AWG twisted pair conductor + foil shield + braid shield;
- Tasker: p/n C522 - 2x 24AWG twisted pairs conductor + foil shield + braid shield.

USE OF COMPOSITOR SW67901:

To configure the Converter, use the available software that runs with Windows called SW67901. It is downloadable on the site www.adfweb.com and its operation is described in this document. *(This manual is referenced to the last version of the software present on our web site)*. The software works with MSWindows (XP, Vista, Seven, 8, 10 or 11; 32/64bit).

When launching the SW67901, the window below appears (Fig. 2).



Note:

It is necessary to have installed .Net Framework 4.

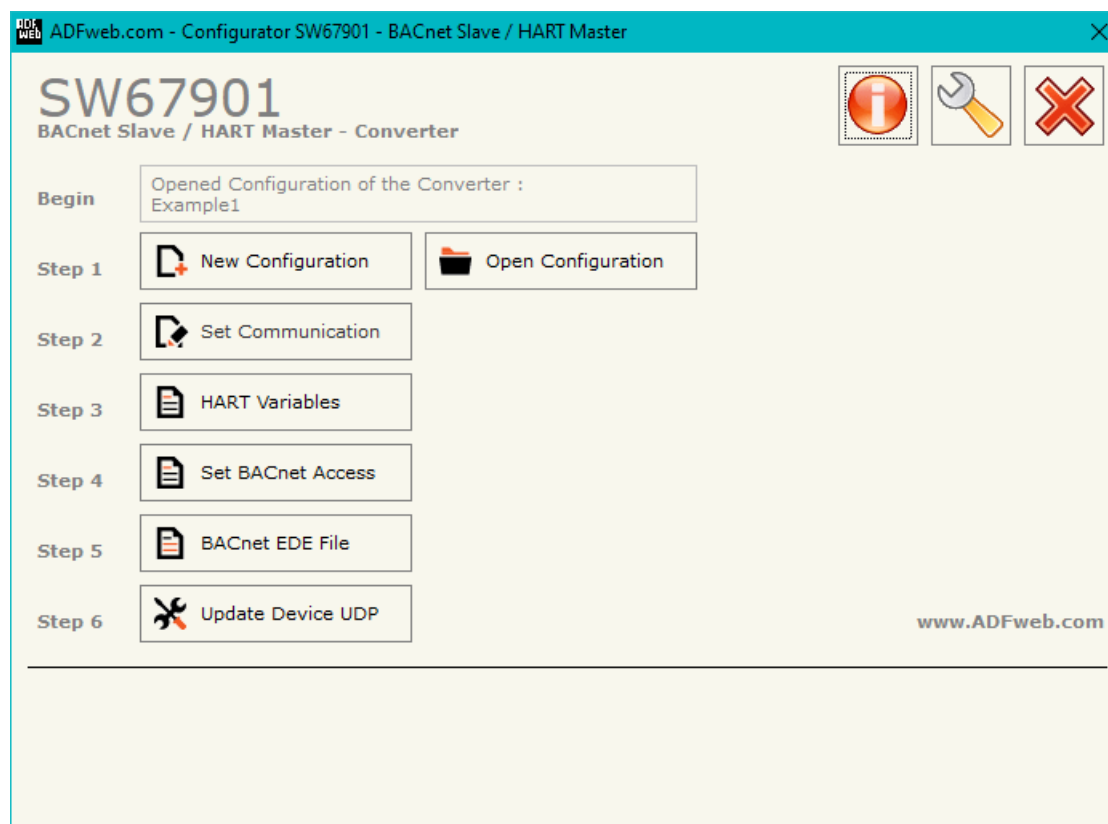
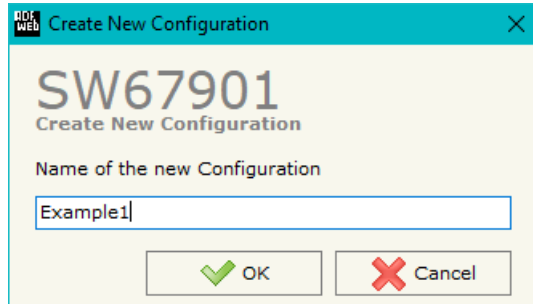


Figure 2: Main window for SW67901

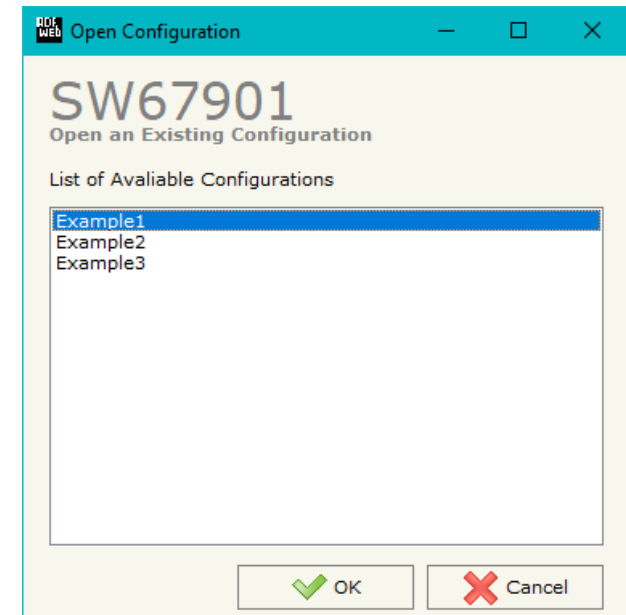
NEW CONFIGURATION / OPEN CONFIGURATION:

The “**New Configuration**” button creates the folder which contains the entire device’s configuration.




A device’s configuration can also be imported or exported:

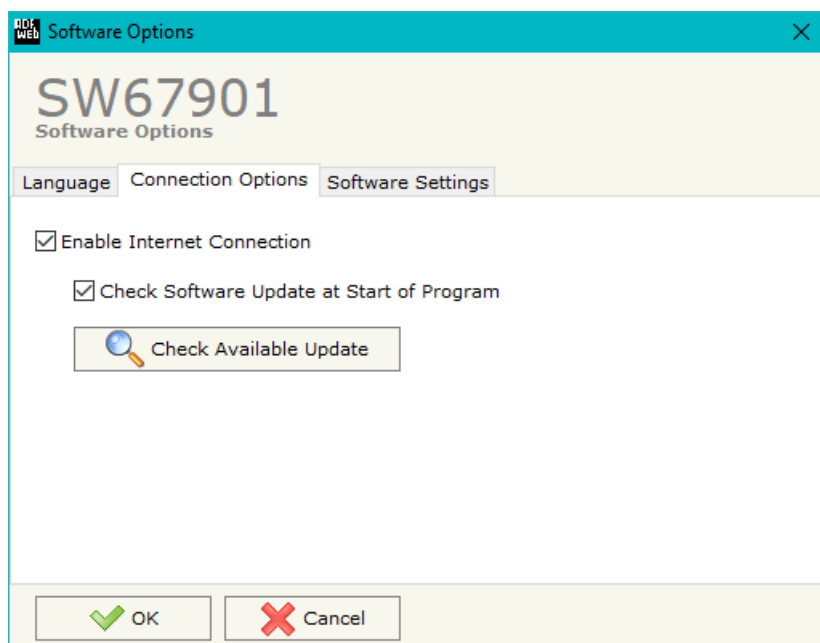
- To clone the configurations of a programmable “BACnet Slave / HART Master” in order to configure another device in the same manner, it is necessary to maintain the folder and all its contents;
- To clone a project in order to obtain a different version of the project, it is sufficient to duplicate the project folder with another name and open the new folder with the button “**Open Configuration**”.



SOFTWARE OPTIONS:

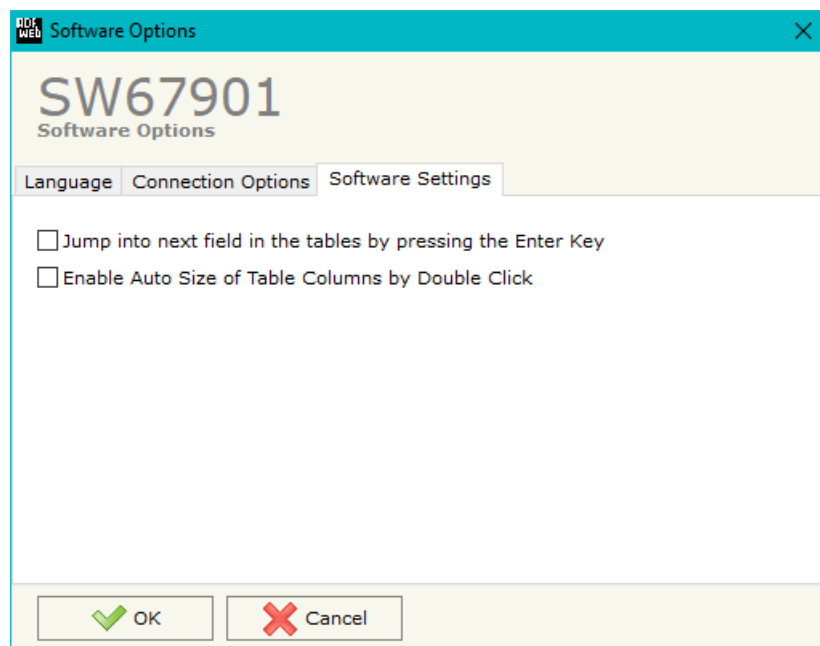
By pressing the “**Settings**” () button there is the possibility to change the language of the software and check the updatings for the compositor.

In the section “Language” it is possible to change the language of the software.



In the section “Connection Options”, it is possible to check if there are some updatings of the software compositor in ADFweb.com website.

Checking the option “**Check Software Update at Start of Program**”, the SW67901 checks automatically if there are updatings when it is launched.



In the section "Software Settings", it is possible to enable/disable some keyboard's commands for an easier navigation inside the tables contained in the different sections of the software.

SET COMMUNICATION:

This section define the fundamental communication parameters of HART and BACnet buses.

By Pressing the **"Set Communication"** button from the main window for SW67901 (Fig. 2) the window "Set Communication" appears (Fig. 3).

In the section "BACnet Slave" is possible to select the type of BACnet to use from:

- BACnet/IP (uses Ethernet);
- BACnet MS/TP (uses RS485).

The means of the fields for the "Ethernet Connection" section are:

- In the field **"Device Name (Hostname)"** the Hostname to assign to the converter is defined;
- If the field **"Obtain an IP Address Automatically (DHCP for Cable Connection)"** is checked, DHCP for LAN connection is enabled;
- If the field **"Enable DNS"** is checked, DNS protocol is enabled;
- In the field **"Primary DNS"** the IP Address of the primary DNS server is defined;
- In the field **"Secondary DNS"** the IP Address of the secondary DNS server is defined.

The means of the fields for the "HART Master" section are:

- In the field **"Address"** the type of Master is defined;
- In the field **"Retry Limit"** the maximum number of retries in case of missing response from HART device is defined;
- If the fields **"Diagnostic"** is checked, it is possible to set a diagnostic free position where you can see the status of the HART variables. If it shows 0, the HART communication is active and with 1, the converter is not receiving any HART frames.

If selected "BACnet/IP" the means of the fields for "BACnet Slave" are:

- In the fields **"IP Address"** the IP address of BACnet/IP side of the converter is defined;
- In the fields **"SubNet Mask"** the SubNet Mask of BACnet/IP side of the converter is defined;

SW67901
Set Communication Setting

1. Ethernet Connection

Device Name (Hostname)

☐ Obtain an IP Address Automatically (DHCP for Cable Connection)

☐ Obtain an IP Address Automatically (DHCP for Wi-Fi Connection)

☐ Enable DNS

Primary DNS . . .

Secondary DNS . . .

2. HART Master

Address Primary Master

Retry Limit 2

☐ Diagnostic 0

3. BACnet Slave

Type BACnet/IP

IP Address 192 . 168 . 2 . 135

SubNet Mask 255 . 255 . 255 . 0

☐ Gateway 192 . 168 . 0 . 1

Port 47808

BACnet Device Name devicename1

Device Identifier 1

☐ BACnet description up to 32 chars

4. Web Pages

User

Password

Figure 3a: "Set Communication" window

- In the fields "**Gateway**" the default gateway of the network is defined. This feature can be enabled or disabled pressing the Check Box field. This feature is used for going out of the net;
- In the field "**Port**" the port used for BACnet communication is defined. The default port used for BACnet communication is 47808, but is possible to insert any value;
- In the field "**BACnet Device Name**" the name of BACnet/IP side of the converter is defined;
- In the field "**Device Identifier**" the ID of BACnet/IP side of the converter is defined;
- If the field "**BACnet description up to 32 chars**" is checked, the description of the BACnet objects can be up to 32 chars.

The means of the fields for the "Web Pages" section are:

- In the field "**User**" the user name for webserver's authentication is defined;
- In the field "**Password**" the password for webserver's authentication is defined.

If selected "BACnet MS/TP", the means of the fields for "BACnet" are:

- In the field "**Baudrate**" the data rate of the BACnet line is defined;
- In the field "**Parity**" the parity of the line is defined;
- In the field "**BACnet Device Name**" the name to give to the BACnet node is defined;
- In the field "**MAC Address**" the MAC of BACnet node (from 0 to 254) is defined;
- The field "**Max Master**" specifies the highest allowable address for master nodes. The value shall be less than or equal to 127;
- The field "**Max Info Frames**" specifies the maximum number of information frames the node may send before it must pass the token;
- In the field "**Device Instance**" the of the BACnet MS/TP side of the converter is defined;
- In the field "**Network**" the BACnet MS/TP network number is defined;
- If the field "**BACnet description up to 32 chars**" is checked, the description of the BACnet objects can be up to 32 chars.

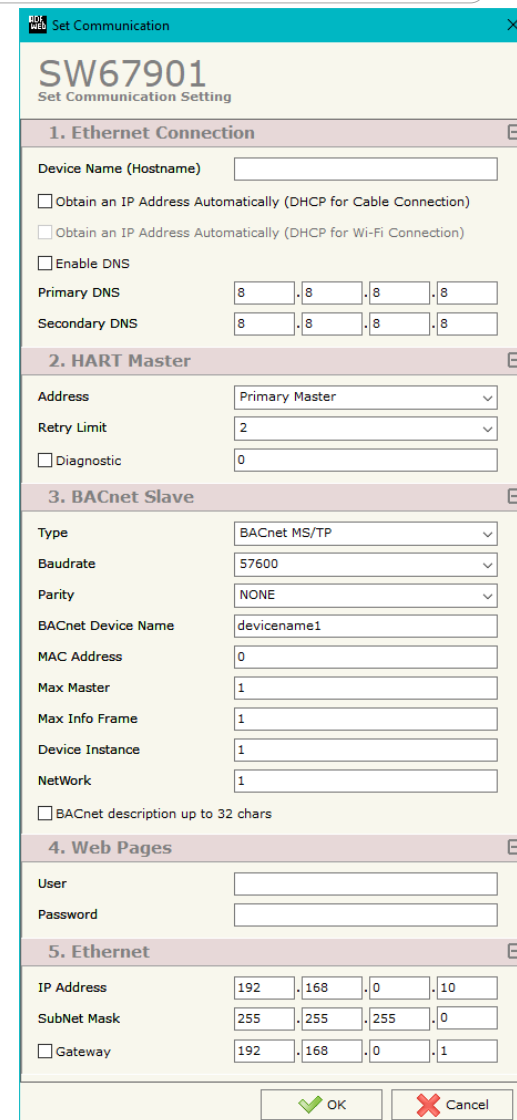


Figure 3b: "Set Communication" window

The means of the fields for the "Ethernet Update" section are:

- In the fields "**IP Address**" the IP address of the converter is defined;
- In the fields "**SubNet Mask**" the SubNet Mask of the converter is defined;
- In the fields "**Gateway**" the default gateway of the network is defined. This feature can be enabled or disabled pressing the Check Box field. This feature is used for going out of the net.

HART VARIABLES:

By Pressing the **"HART Variables"** button from the main window for SW67901 (Fig. 2) the window "Definition of HART Variables List" appears (Fig. 4).

This section is used to define the HART variables to read/write with the BACnet Master.

N	Enable	Device Address	Preamble Count	Type	Var/Cmd Number	Params	Position	Swap	Conv Int	Operations	TimeOut	Mnemonic
1	<input checked="" type="checkbox"/>	0x6DEB1AFAEA	5	Var	246		0	<input type="checkbox"/>	<input type="checkbox"/>	None	0	longtag -
2	<input checked="" type="checkbox"/>	0x6DEB1AFAEA	5	Var	247		4	<input type="checkbox"/>	<input type="checkbox"/>	None	0	longtag -
3	<input checked="" type="checkbox"/>	0x6DEB1AFAEA	5	Var	248		8	<input type="checkbox"/>	<input type="checkbox"/>	None	0	longtag -
4	<input checked="" type="checkbox"/>	0x6DEB1AFAEA	5	Var	249		12	<input type="checkbox"/>	<input type="checkbox"/>	None	0	longtag -
5	<input checked="" type="checkbox"/>							<input type="checkbox"/>	<input type="checkbox"/>			
6	<input checked="" type="checkbox"/>							<input type="checkbox"/>	<input type="checkbox"/>			
7	<input checked="" type="checkbox"/>							<input type="checkbox"/>	<input type="checkbox"/>			
8	<input checked="" type="checkbox"/>							<input type="checkbox"/>	<input type="checkbox"/>			
9	<input checked="" type="checkbox"/>							<input type="checkbox"/>	<input type="checkbox"/>			

Buttons: OK, Cancel, Delete Row, Insert Row, Copy Row, Paste Row, Scan

Figure 4: "HART Variables" window

The means of the fields are:

- If the field **"Enable"** is checked, the HART variable is enabled;
- In the field **"Device Address"** the address of HART device is defined;
- In the field **"Preamble Count"** the number of bytes for the synchronization is defined;
- If the field **"Type"** the type of HART parameter is defined;
- In the field **"Var/Cmd Number"** the identification of variable/command to read/write is defined. From HART standard, the most used numbers are:
 - 246: Primary Variable;
 - 247: Secondary Variable;
 - 248: Tertiary Variable;
 - 249: Quaternary Variable.

- In the field "**Params**" the parameters for the commands are defined;
- In the field "**Position**" the starting byte of the internal array where mapping the HART data is defined;
- In the field "**Swap**" the bytes' order is reversed;
- In the field "**Conv Int**" the data from HART device is converted in Integer format;
- In the field "**Operations**" a post-operation on the data read is defined;
- In the field "**Timeout**" the timeout in ms for HART variable is defined. If the variable is not received for the time defined, the data on BACnet side are set to '0';
- In the field "**Mnemonic**" a description of the variable is defined.

**Note:**

In order to configure the HART devices and their variables, it is possible to scan the HART network and get the data automatically. It is enough to click on "Scan" button. See page 26 for more info.

SET BACNET ACCESS:

By Pressing the **"Set BACnet Access"** button from the main window for SW67901 (Fig. 2) the window "BACnet Set Access" appears (Fig. 5).

The window is divided in two parts, the **"BACnet in Read"** that contains the BACnet objects readable by a BACnet Master (HART data read); and **"BACnet in Write"** that contains the BACnet objects writeable by a BACnet Master (HART data written).

The meaning of the fields in the window are the follows:

- In the field **"Data Type"** is possible to select the BACnet object data type;
- In the field **"Eng. Unit"**, with double click the window *"Select the BACnet Engineering Unit"* appears (Fig. 6);
- In the field **"Position"** is possible to select the position where take/save the data from internal memory array;
- The field **"Start Bit"** is used for the "Binary In" and "Binary Out" BACnet objects;
- The field **"Length"** is used for all the others BACnet objects;
- If the field **"Swap"** is checked, the bytes' order is reversed;
- If the field **"Swap Word"** is checked, the data written to the BACnet words are swapped;
- In the field **"Mnemonic"** a description of the object is defined.

N	Data Type	Eng. Unit	Position	Start Bit	Length	Swap	Swap Word	Mnemonic
1	Analog Input	95	0	0	4	<input checked="" type="checkbox"/>	<input type="checkbox"/>	BACnet Read AI

N	Data Type	Eng. Unit	Position	Start Bit	Length	Swap	Swap Word	Mnemonic
1						<input type="checkbox"/>	<input type="checkbox"/>	
2						<input type="checkbox"/>	<input type="checkbox"/>	
3						<input type="checkbox"/>	<input type="checkbox"/>	
4						<input type="checkbox"/>	<input type="checkbox"/>	
5						<input type="checkbox"/>	<input type="checkbox"/>	
6						<input type="checkbox"/>	<input type="checkbox"/>	
7						<input type="checkbox"/>	<input type="checkbox"/>	
8						<input type="checkbox"/>	<input type="checkbox"/>	

Figure 5: "BACnet Set Access" window

It is possible to insert directly the Unit (using its unique number) by compiling the **"Selected BACnet Engineering Unit"** field; or by selecting with the fields **"Select the Type"** and **"Select unit"** the Type/Unit desired. If the second way is used, is necessary to press the **"Select Engineering Unit"** button for confirm the choice.

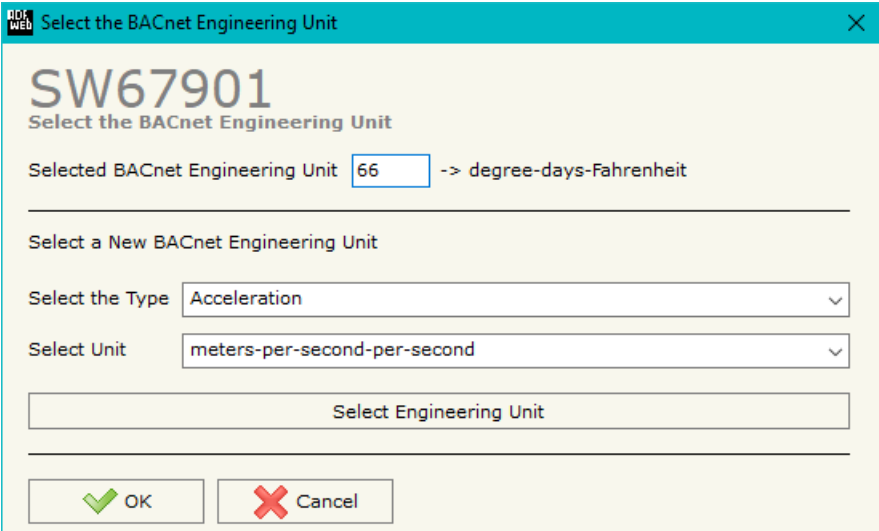


Figure 6: "Select the BACnet Engineering Unit" window

BACNET EDE FILE:

By pressing the **"BACnet EDE File"** button it is possible to save the EDE file for the BACnet Master.

UPDATE DEVICE:

By pressing the “**Update Device**” button, it is possible to load the created Configuration into the device; and also the Firmware, if necessary. This by using the Ethernet port.

If you don't know the actual IP address of the device you have to use this procedure:

- Turn OFF the Device;
- Put Dip1 of 'Dip-Switch A' in ON position;
- Turn ON the device
- Connect the Ethernet cable;
- Insert the IP “**192.168.2.205**”;
- Select which operations you want to do;
- Press the “**Execute update firmware**” button to start the upload;
- When all the operations are “OK” turn OFF the Device;
- Put Dip1 of 'Dip-Switch A' in OFF position;
- Turn ON the device.

If you know the actual IP address of the device, you have to use this procedure:

- Turn ON the Device with the Ethernet cable inserted;
- Insert the actual IP of the Converter;
- Select which operations you want to do;
- Press the “**Execute update firmware**” button to start the upload;
- When all the operations are “OK” the device automatically goes at Normal Mode.

At this point the configuration/firmware on the device is correctly updated.

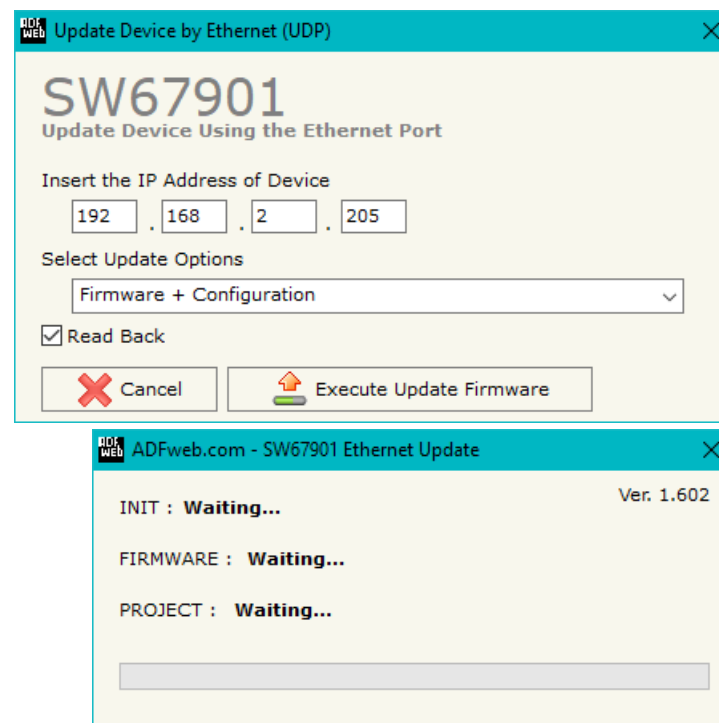


Figure 7: “Update device” windows

**Note:**

When you receive the device, for the first time, you also have to update the Firmware in the HD67901 device.

**Warning:**

If Fig. 8 appears when you try to do the Update try these points before seeking assistance:

- Try to repeat the operations for the updating;
- Try with another PC;
- Try to restart the PC;
- Check the LAN settings;
- If you are using the program inside a Virtual Machine, try to use in the main Operating System;
- If you are using Windows Seven, Vista, 8, 10 or 11 make sure that you have the administrator privileges;
- In case you have to program more than one device, using the "UDP Update", you have to cancel the ARP table every time you connect a new device on Ethernet. For do this you have to launch the "Command Prompt" and write the command "arp -d". Pay attention that with Windows Vista, Seven, 8, 10 or 11 you have to launch the "Command Prompt" with Administrator Rights;
- Pay attention at Firewall lock.

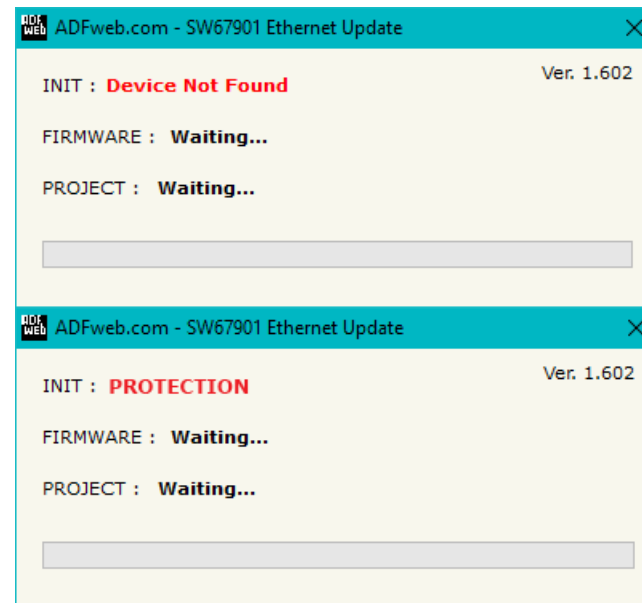


Figure 8: "Error" window

**Warning:**

In the case of HD67901 you have to use the software "SW67901": www.adfweb.com/download/filefold/SW67901.zip.

SCAN FUNCTION:

“SCAN” function is integrated in the configurator software SW67901. It is possible to access to these functions by simple click on the “Scan” button in “HART Variables” section.

It has the following characteristics:

- Possibility to scan HART network;
- Automatic decode of HART messages;
- Easy connection directly through the Ethernet port of the converter.

In order to start the Scan, it is necessary to use this procedure after having set the IP Address inside the converter:

- Connect the converter in Normal Mode to the PC using Ethernet port;
- Open the section “HART Variables” of SW67901;
- Click on “Scan” button. The window that appears will be like below:

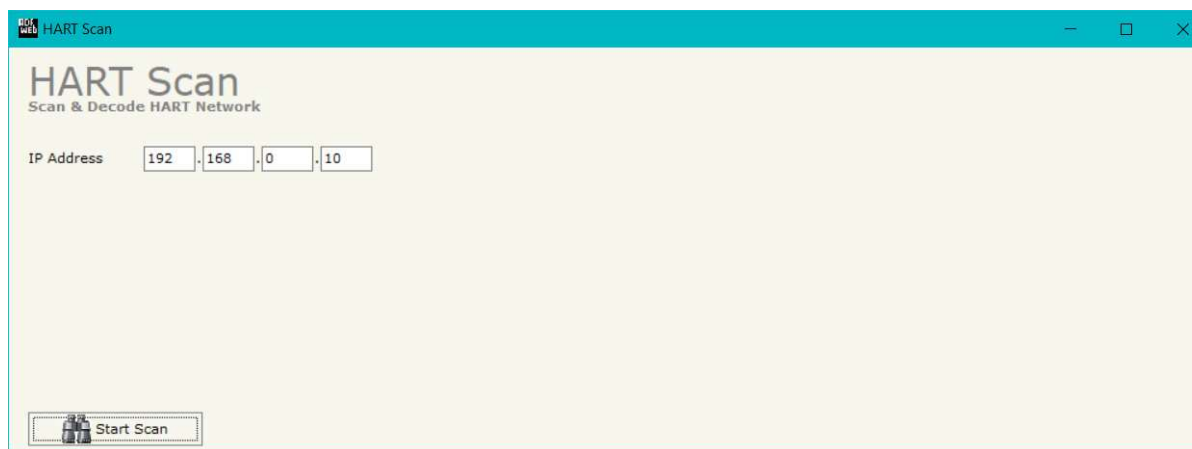


Figure 9a: “HART Scan” window

- Insert the IP Address configured in the converter;
- Start the Scan by clicking on "Start Scan" button. The window will appear like below:

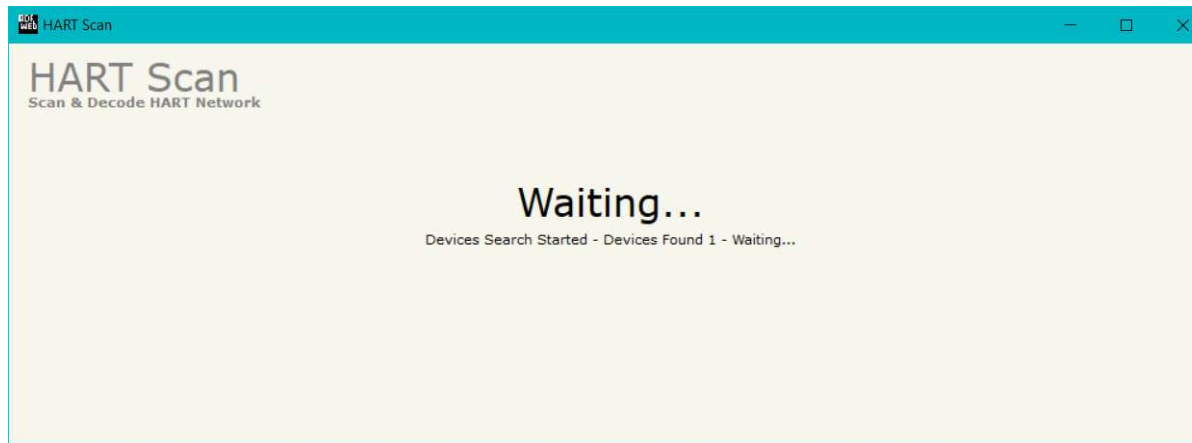


Figure 9b: "HART Scan" window

- When the Scan is complete, the software will show the results. You can import the data by clicking on "OK" button after having selected the required variables. The results will be displayed as below:

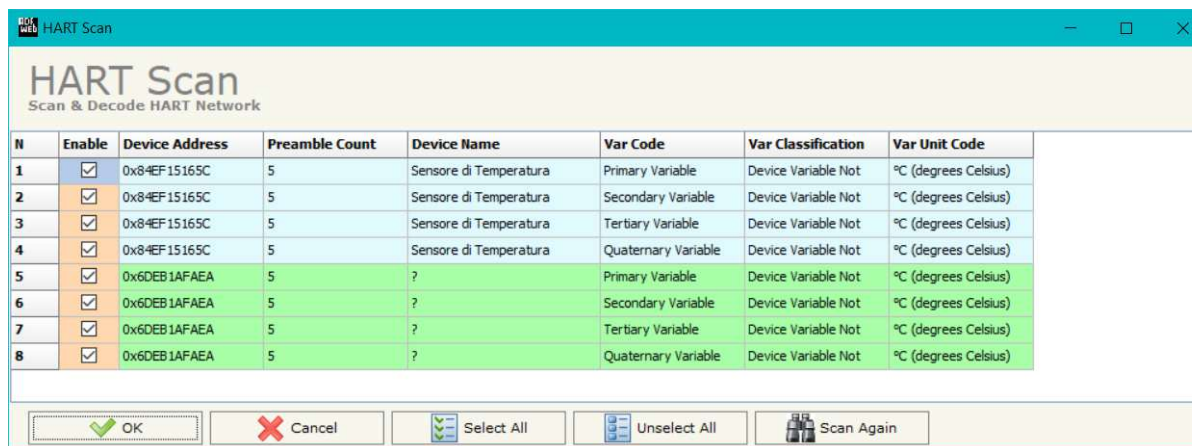


Figure 9c: "HART Scan" window

WEBSERVER INTERFACE:

The HD67901-xxxx-A1 has an integrated Webserver that allows to scan HART network, discover HART devices and program them for first installation. It is possible to use the most common browser like Internet Explorer, Google Chrome, Mozilla Firefox by editing the IP Address of the converter in the address bar of the browser.

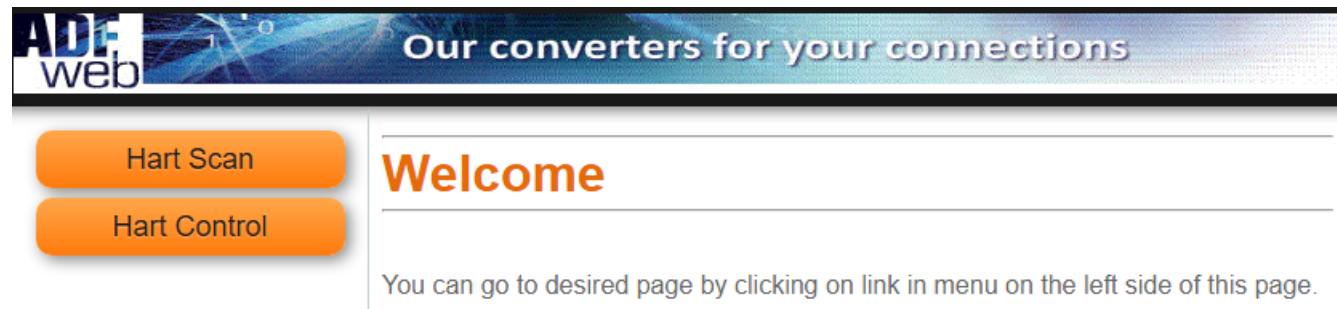
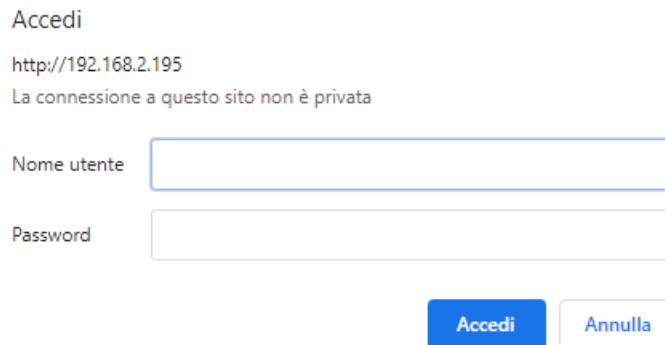
WELCOME

Figure 10: "Welcome" window

As soon as the connection to the Webserver interface of the Data Logger is done, "**Welcome**" window appears (Fig. 10). It has the following structure:

- "**HART Scan**" button: it is possible to go to the HART scan section where you can discover the connected HART devices;
- "**HART Control**" button: it is possible to go to the HART control section where you can program the ID and the name of the HART devices.

When one of the buttons of the “Welcome” page are pressed, it is necessary to do the login, using the “Admin” and “Password” defined in the section “Set Communication” of SW67901 (Fig. 3).



Accedi

http://192.168.2.195

La connessione a questo sito non è privata

Nome utente

Password

Figure 11: “Login” window

HART SCAN

Our converters for your connections

Hart Scan

Hart Control

Hart Scan

NUMBER OF DEVICES TO SEARCH FOR (Maximum 16)

Scan Start Read Results

FOUND 1 DEVICES			
POLLING	UNIQUE ID	DESCRIPTOR	HART VERS
DEV 4	6DEB1AFAEA	PR5337D Sensore di Temperatura	HART7

Figure 12: "HART Scan" window

When the "HART Scan" button is pressed, the "**HART Scan**" window appears (Fig. 12). It has the following fields:

- "**NUMBER OF DEVICES TO SEARCH FOR (Maximum 16)**" field: number of Hart devices connected;
- "**Scan Start**" button: it is possible to start the scan of the HART network and discover the devices;
- "**Read Results**" button: it is possible to read the result of the last HART scan;

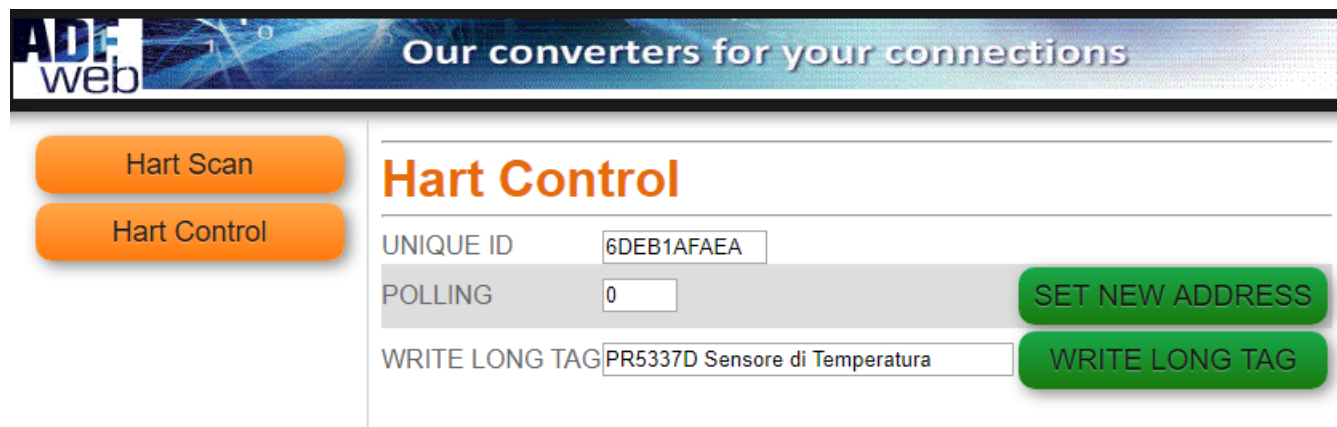
HART CONTROL

Figure 13: "Data Logger Commands" window

When the "HART Control" button is pressed or when a discovered HART node from HART Scan section is selected, the "**HART Control**" window appears (Fig. 13). It has the following fields:

- "**UNIQUE ID**": it is possible to insert the unique ID of the HART device to control;
- "**POLLING**": it is possible to insert the new address to assign to the HART device;
- "**WRITE LONG TAG**": it is possible to defined the description of the HART device.

MECHANICAL DIMENSIONS:

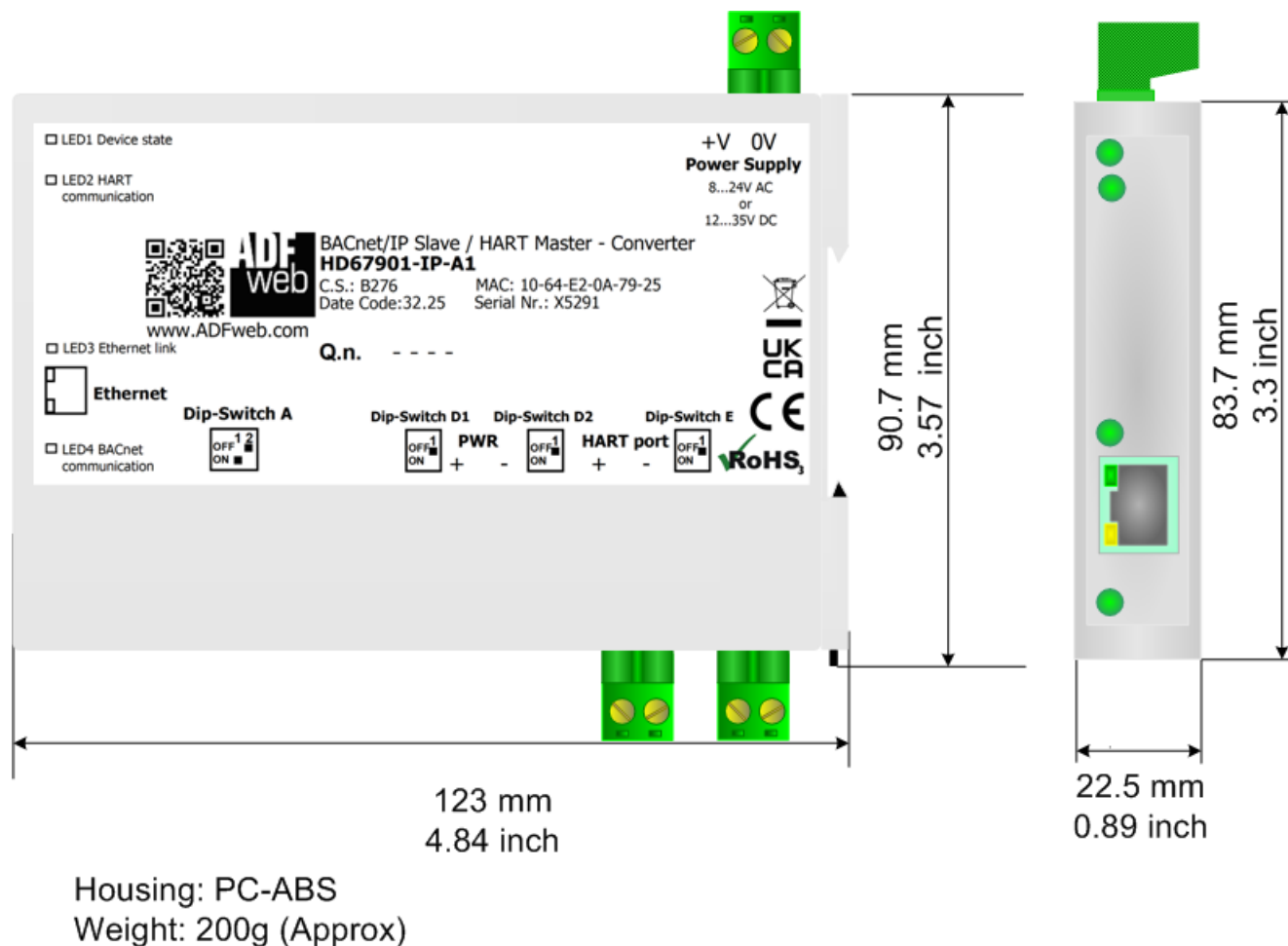
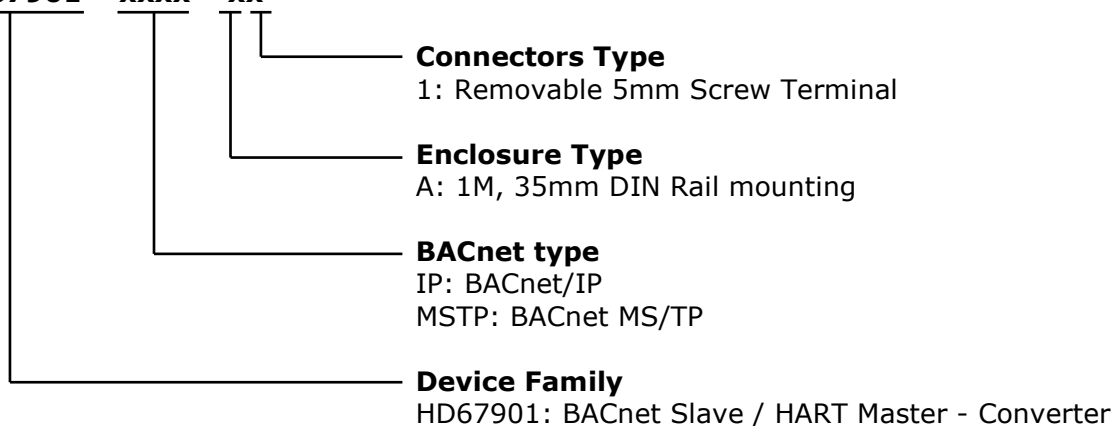


Figure 14: Mechanical dimensions scheme for HD67901-xxxx-A1

ORDERING INFORMATION:

The ordering part number is formed by a valid combination of the following:

HD67901 - xxxx - xx



Order Code: **HD67901-IP-A1** - BACnet/IP Slave / HART Master - Converter

Order Code: **HD67901-MSTP-A1** - BACnet MS/TP Slave / HART Master - Converter

ACCESSORIES:

Order Code: **AC34011** - 35mm Rail DIN - Power Supply 220/240V AC 50/60Hz - 12 V DC

Order Code: **AC34012** - 35mm Rail DIN - Power Supply 220/240V AC 50/60Hz - 24 V DC

DISCLAIMER:

All technical content within this document can be modified without notice. The content of the document is a under continual renewal. For losses due to fire, earthquake, third party access or other accidents, or intentional or accidental abuse, misuse, or use under abnormal conditions repairs are charged to the user. ADFweb.com S.r.l. will not be liable for accidental loss of use or inability to use this product, such as loss of business income. ADFweb.com S.r.l. shall not be liable for consequences of improper use.

OTHER REGULATIONS AND STANDARDS:**WEEE INFORMATION**

Disposal of old electrical and electronic equipment (as in the European Union and other European countries with separate collection systems).

— This symbol on the product or on its packaging indicates that this product may not be treated as household rubbish. Instead, it should be taken to an applicable collection point for the recycling of electrical and electronic equipment. If the product is disposed correctly, you will help prevent potential negative environmental factors and impact of human health, which could otherwise be caused by inappropriate disposal. The recycling of materials will help to conserve natural resources. For more information about recycling this product, please contact your local city office, your household waste disposal service or the shop where you purchased the product.

RESTRICTION OF HAZARDOUS SUBSTANCES DIRECTIVE

The device respects the 2002/95/EC Directive on the restriction of the use of certain hazardous substances in electrical and electronic equipment (commonly referred to as Restriction of Hazardous Substances Directive or RoHS).

CE MARKING

The product conforms with the essential requirements of the applicable EC directives.

WARRANTIES AND TECHNICAL SUPPORT:

For fast and easy technical support for your ADFweb.com SRL products, consult our internet support at www.adfweb.com. Otherwise contact us at the address support@adfweb.com

RETURN POLICY:

If while using your product you have any problem and you wish to exchange or repair it, please do the following:

- Obtain a Product Return Number (PRN) from our internet support at www.adfweb.com. Together with the request, you need to provide detailed information about the problem.
- Send the product to the address provided with the PRN, having prepaid the shipping costs (shipment costs billed to us will not be accepted).

If the product is within the warranty of twelve months, it will be repaired or exchanged and returned within three weeks. If the product is no longer under warranty, you will receive a repair estimate.



ADFweb.com S.r.l.
Via Strada Nuova, 17
IT-31010 Mareno di Piave
TREVISO (Italy)
Phone +39.0438.30.91.31
Fax +39.0438.49.20.99
www.adfweb.com

