

User Manual

Revision 1.001

English

EtherCAT Master / PROFINET Slave - Converter

(Order Code: HD67E73-A1)

For Website information:

www.adfweb.com?Product=HD67E73

For Price information:

www.adfweb.com?Price=HD67E73-A1

Benefits and Main Features:

- ⊕ Triple Electrical isolation
- ⊕ Temperature range: -40°C/+85°C (-40°F/+185°F)



User Manual

For other EtherCAT Master products see also the following link:

Converter EtherCAT Slave to

www.adfweb.com?Product=HD67E50
www.adfweb.com?Product=HD67E51
www.adfweb.com?Product=HD67E52
www.adfweb.com?Product=HD67E53
www.adfweb.com?Product=HD67E54
www.adfweb.com?Product=HD67E55
www.adfweb.com?Product=HD67E56
www.adfweb.com?Product=HD67E57
www.adfweb.com?Product=HD67E58
www.adfweb.com?Product=HD67E59
www.adfweb.com?Product=HD67E60
www.adfweb.com?Product=HD67E61
www.adfweb.com?Product=HD67E62
www.adfweb.com?Product=HD67E64
www.adfweb.com?Product=HD67E65
www.adfweb.com?Product=HD67E66
www.adfweb.com?Product=HD67E67
www.adfweb.com?Product=HD67E68
www.adfweb.com?Product=HD67E69
www.adfweb.com?Product=HD67E70
www.adfweb.com?Product=HD67E71
www.adfweb.com?Product=HD67E72
www.adfweb.com?Product=HD67E74
www.adfweb.com?Product=HD67E75
www.adfweb.com?Product=HD67E76
www.adfweb.com?Product=HD67E77
www.adfweb.com?Product=HD67E78

(Serial)
(Modbus Master)
(Modbus Slave)
(Modbus TCP Master)
(Modbus TCP Slave)
(BACnet Master)
(BACnet Slave)
(CAN)
(CANopen)
(DeviceNet Master)
(DeviceNet Slave)
(DMX)
(Ethernet)
(IEC61850 Client)
(IEC61850 Server)
(J1939)
(MQTT)
(NMEA0183)
(NMEA2000)
(OPC UA Client)
(OPC UA Server)
(PROFINET Master)
(SNMP Manager)
(SNMP Agent)
(EtherNet/IP Master)
(EtherNet/IP Slave)
(S7comm Client)

INDEX:

	Page
INDEX	2
UPDATED DOCUMENTATION	2
REVISION LIST	2
WARNING	2
TRADEMARKS	2
SECURITY ALERT	3
EXAMPLE OF CONNECTION	4
CONNECTION SCHEME	5
CHARACTERISTICS	6
CONFIGURATION	6
POWER SUPPLY	7
FUNCTION MODES	8
LEDS	9
ETHERCAT	10
ETHERNET	10
USE OF COMPOSITOR SW67E73	11
NEW CONFIGURATION / OPEN CONFIGURATION	12
SOFTWARE OPTIONS	13
SET COMMUNICATION	15
ETHERCAT SET ACCESS	17
UPDATE DEVICE	20
PLC CONFIGURATION	22
MECHANICAL DIMENSIONS	25
ORDERING INFORMATIONS	26
ACCESSORIES	26
DISCLAIMER	27
OTHER REGULATIONS AND STANDARDS	27
WARRANTIES AND TECHNICAL SUPPORT	28
RETURN POLICY	28

UPDATED DOCUMENTATION:

Dear customer, we thank you for your attention and we remind you that you need to check that the following document is:

- ✦ Updated
- ✦ Related to the product you own

To obtain the most recently updated document, note the “document code” that appears at the top right-hand corner of each page of this document.

With this “Document Code” go to web page www.adfweb.com/download/ and search for the corresponding code on the page. Click on the proper “Document Code” and download the updates.

REVISION LIST:

Revision	Date	Author	Chapter	Description
1.000	15/09/2021	Ff	All	First Release
1.001	15/01/2025	Ln	All	New design

WARNING:

ADFweb.com reserves the right to change information in this manual about our product without warning.

ADFweb.com is not responsible for any error this manual may contain.

TRADEMARKS:

All trademarks mentioned in this document belong to their respective owners.

SECURITY ALERT:**GENERAL INFORMATION**

To ensure safe operation, the device must be operated according to the instructions in the manual. When using the device, legal and safety regulation are required for each individual application. The same applies also when using accessories.

INTENDED USE

Machines and systems must be designed so the faulty conditions do not lead to a dangerous situation for the operator (i.e. independent limit switches, mechanical interlocks, etc.).

QUALIFIED PERSONNEL

The device can be used only by qualified personnel, strictly in accordance with the specifications. Qualified personnel are persons who are familiar with the installation, assembly, commissioning and operation of this equipment and who have appropriate qualifications for their job.

RESIDUAL RISKS

The device is state-of-the-art and is safe. The instruments can represent a potential hazard if they are inappropriately installed and operated by untrained personnel. These instructions refer to residual risks with the following symbol:

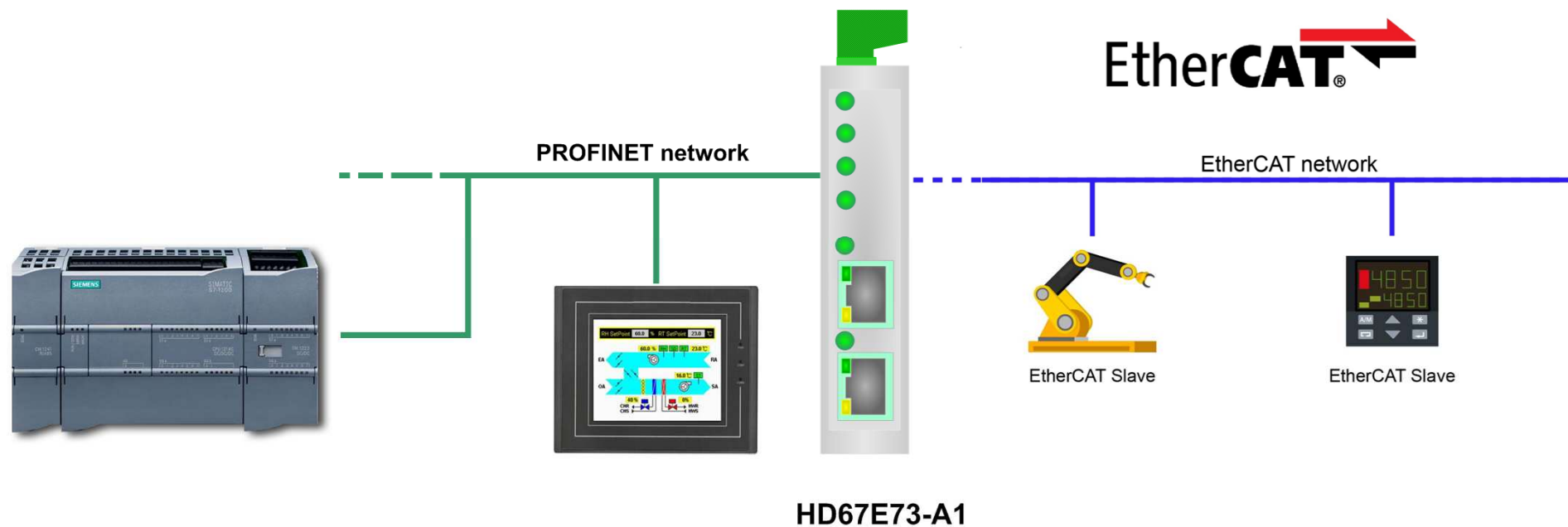


This symbol indicates that non-observance of the safety instructions is a danger for people that could lead to serious injury or death and / or the possibility of damage.

CE CONFORMITY

The declaration is made by our company. You can send an email to support@adfweb.com or give us a call if you need it.

EXAMPLE OF CONNECTION:



CONNECTION SCHEME:

Dip-Switch A:

-Dip1 – Functioning Mode

 = Normal  = Boot

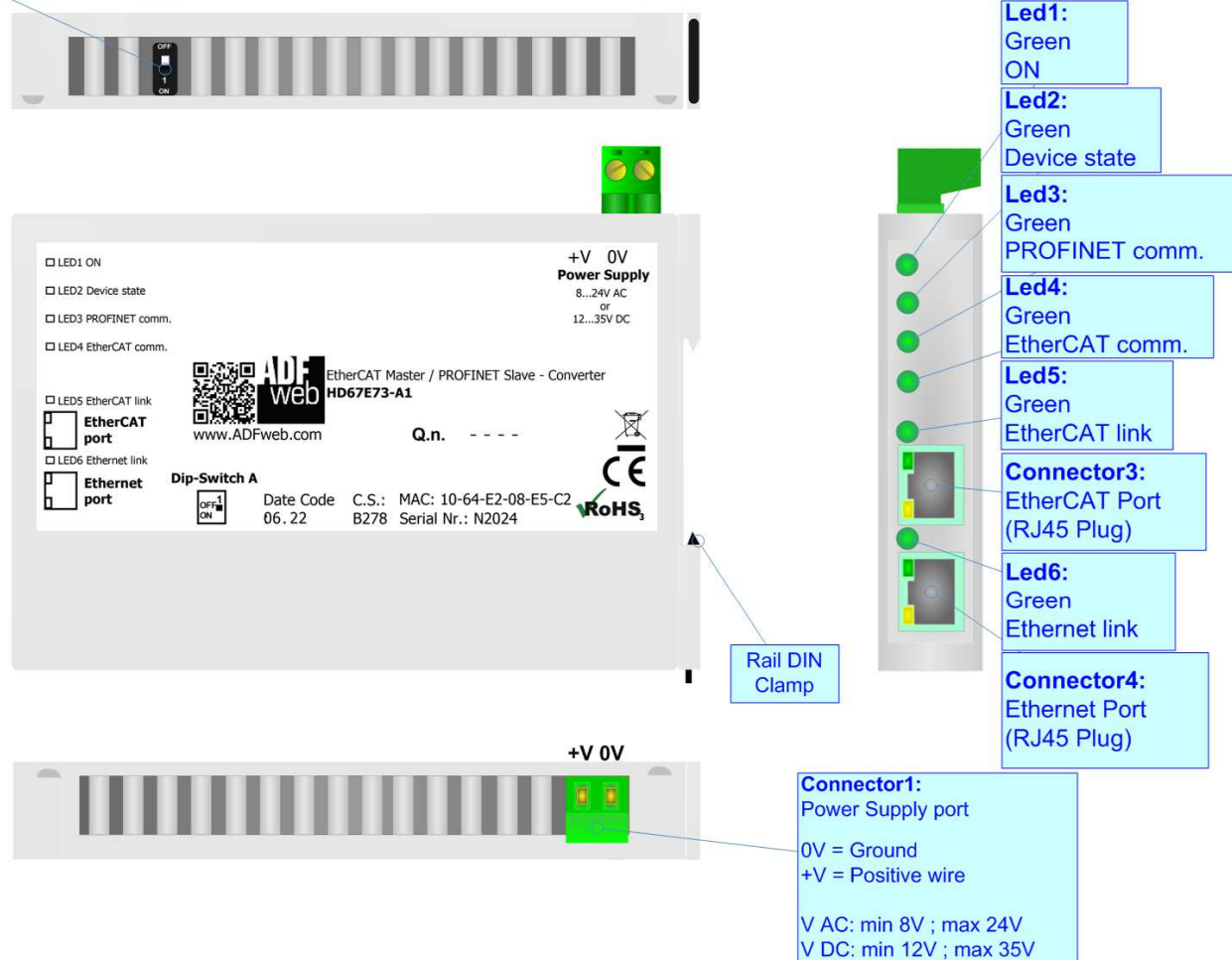


Figure 1: Connection scheme for HD67E73-A1

CHARACTERISTICS:

The HD67E73-A1 are EtherCAT Master / PROFINET Slave - Converters.

It allows for the following characteristics:

- Isolation between EtherCAT – PROFINET – Power Supply;
- Two-directional information between EtherCAT bus and PROFINET bus;
- Mountable on 35mm Rail DIN;
- Wide power supply input range: 8...24V AC or 12...35V DC;
- Wide temperature range: -40°C / +85°C [-40°F / +185°F].


CONFIGURATION:

You need Compositor SW67E73 software on your PC in order to perform the following:

- Define the parameters of EtherCAT line;
- Define the parameters of PROFINET line;
- Define EtherCAT slaves from which reading/writing the data;
- Update the device.

POWER SUPPLY:

The devices can be powered at 8...24V AC and 12...35V DC. For more details see the two tables below.

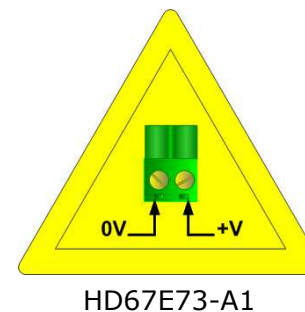
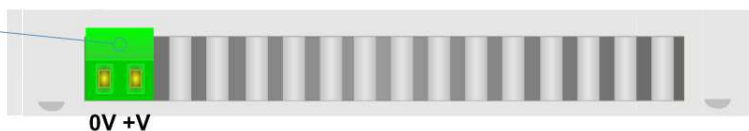
VAC 		VDC 	
Vmin	Vmax	Vmin	Vmax
8V	24V	12V	35V

Consumption at 24V DC:

Device	Consumption [W/VA]
HD67E73-A1	3.5

Caution: Do not reverse the polarity power

Connector1:
Power Supply port
0V = Ground
+V = Positive wire
V AC: min 8V ; max 24V
V DC: min 12V ; max 35V



FUNCTION MODES:

The device has got two function modes depending on the position of the 'Dip1 of Dip-Switch A':

- The first, with 'Dip1 of Dip-Switch A' at "OFF" position, is used for the normal working of the device.
- The second, with 'Dip1 of Dip-Switch A' at "ON" position, is used for uploading the Project and/or Firmware.

For the operations to follow for the updating, see 'UPDATE DEVICE' section.

According to the functioning mode, the LEDs will have specific functions, see 'LEDS' section.

Dip-Switch A:
-Dip1 – Functioning Mode



= Normal



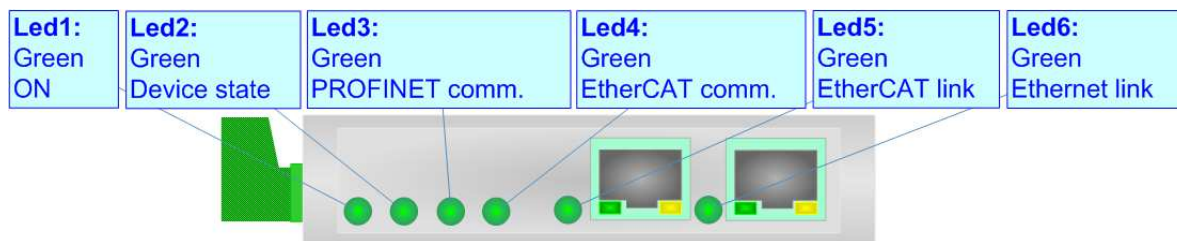
= Boot



LEDS:

The device has got six LEDs that are used to give information about the functioning status.
The various meanings of the LEDs are described in the table below.

LED	Normal Mode	Boot Mode
1: ON [supply voltage] (green)	ON: Device powered OFF: Device not powered	ON: Device powered OFF: Device not powered
2: Device State (green)	Blinks slowly (~1Hz)	Blinks quickly: Boot state Blinks very slowly (~0.5Hz): update in progress
3: PROFINET comm. (green)	It blinks when PROFINET communication is running	Blinks quickly: Boot state Blinks very slowly (~0.5Hz): update in progress
4: EtherCAT comm. (green)	It blinks when EtherCAT communication is running	Blinks quickly: Boot state Blinks very slowly (~0.5Hz): update in progress
5: EtherCAT link (green)	ON: EtherCAT cable connected OFF: EtherCAT cable disconnected	ON: EtherCAT cable connected OFF: EtherCAT cable disconnected
6: Ethernet link (green)	ON: Ethernet cable connected OFF: Ethernet cable disconnected	ON: Ethernet cable connected OFF: Ethernet cable disconnected

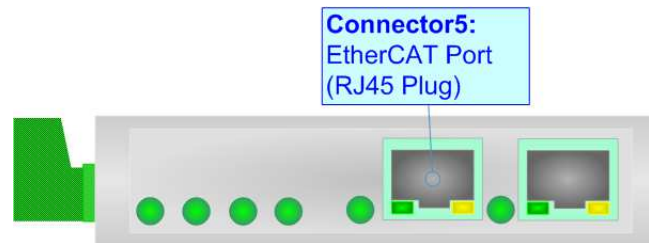


ETHERCAT

EtherCAT (Ethernet for Control Automation Technology) is an Ethernet-based fieldbus system, invented by Beckhoff Automation.

The protocol is standardized in IEC 61158 and is suitable for both hard and soft real-time computing requirements in automation technology. With EtherCAT, the standard Ethernet packet or frame (according to IEEE 802.3) is no longer received, interpreted, and copied as process data at every node. The EtherCAT slave devices read the data addressed to them while the telegram passes through the device, processing data "on the fly". In other words, real-time data and messages are prioritized over more general, less time-sensitive or heavy load data.

EtherCAT connection must be made using Connector5 of the HD67E73-A1.



ETHERNET:

PROFINET connection and the updating of the converter must be made using Connector4 of the HD67E73-A1 with at least a Category 5E cable. The maximum length of the cable should not exceed 100m. The cable has to conform to the T568 norms relative to connections in cat.5 up to 100 Mbps. To connect the device to an Hub/Switch is recommended the use of a straight cable, to connect the device to a PC/PLC/other is recommended the use of a cross cable.



USE OF COMPOSITOR SW67E73:

To configure the Converter, use the available software that runs with Windows called SW67E73. It is downloadable on the site www.adfweb.com and its operation is described in this document. *(This manual is referenced to the last version of the software present on our web site)*. The software works with MSWindows (XP, Vista, Seven, 8, 10 or 11; 32/64bit).

When launching the SW67E73, the window below appears (Fig. 2).



Note:

It is necessary to have installed .Net Framework 4.

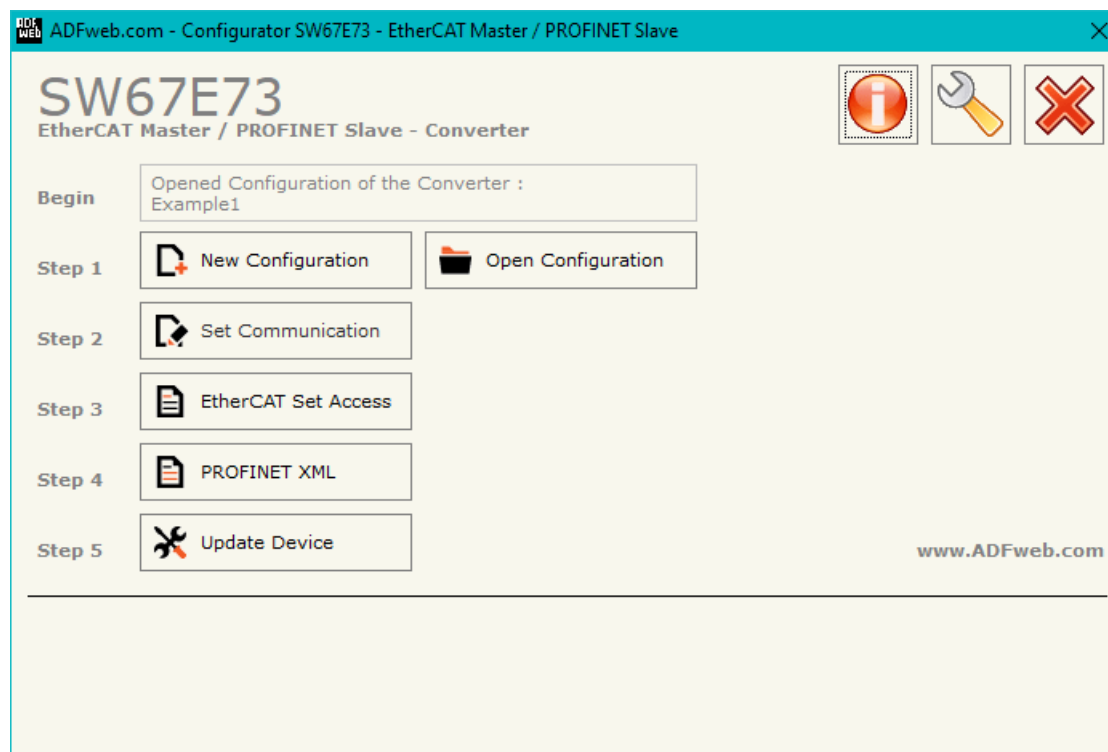
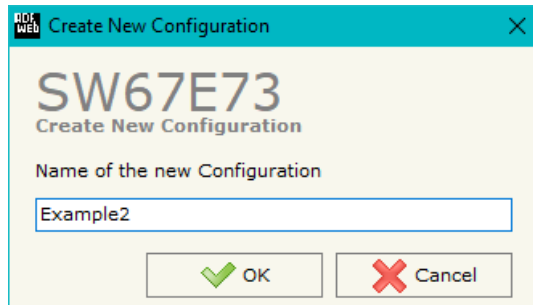


Figure 2: Main window for SW67E73

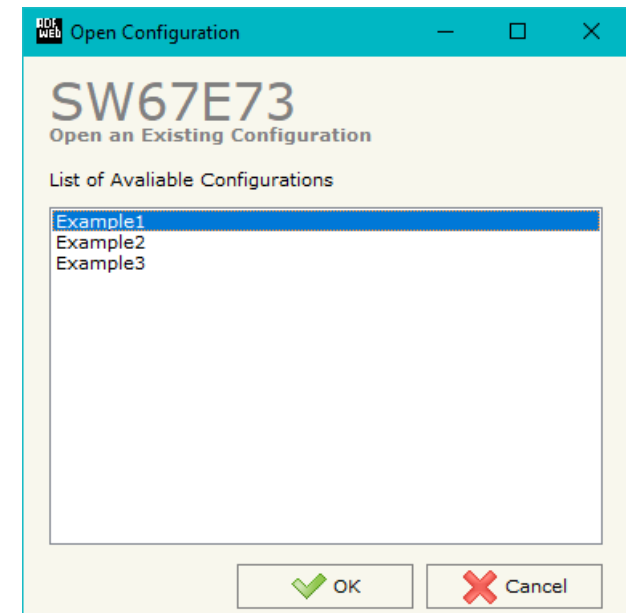
NEW CONFIGURATION / OPEN CONFIGURATION:

The “**New Configuration**” button creates the folder which contains the entire device’s configuration.




A device’s configuration can also be imported or exported:

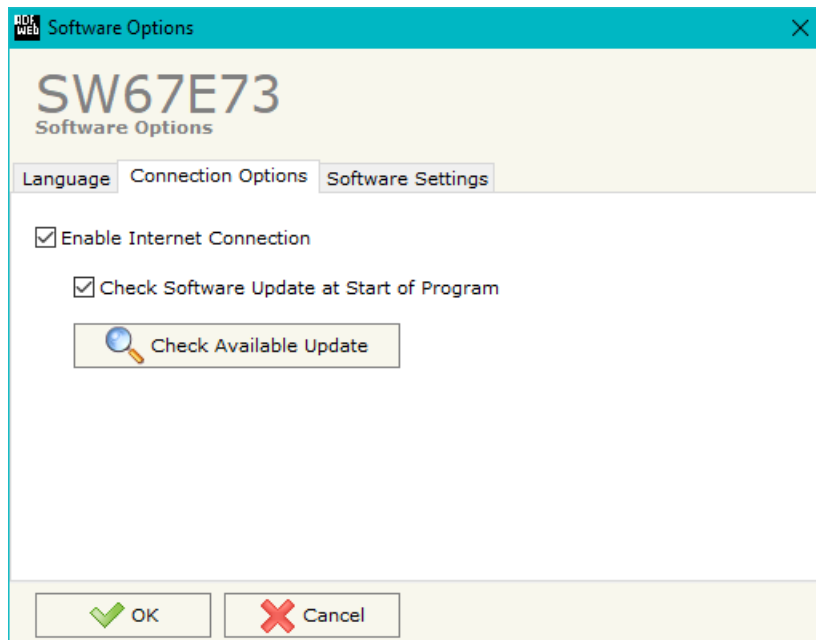
- To clone the configurations of a programmable “EtherCAT Master / PROFINET Slave - Converter” in order to configure another device in the same manner, it is necessary to maintain the folder and all its contents;
- To clone a project in order to obtain a different version of the project, it is sufficient to duplicate the project folder with another name and open the new folder with the button “**Open Configuration**”.



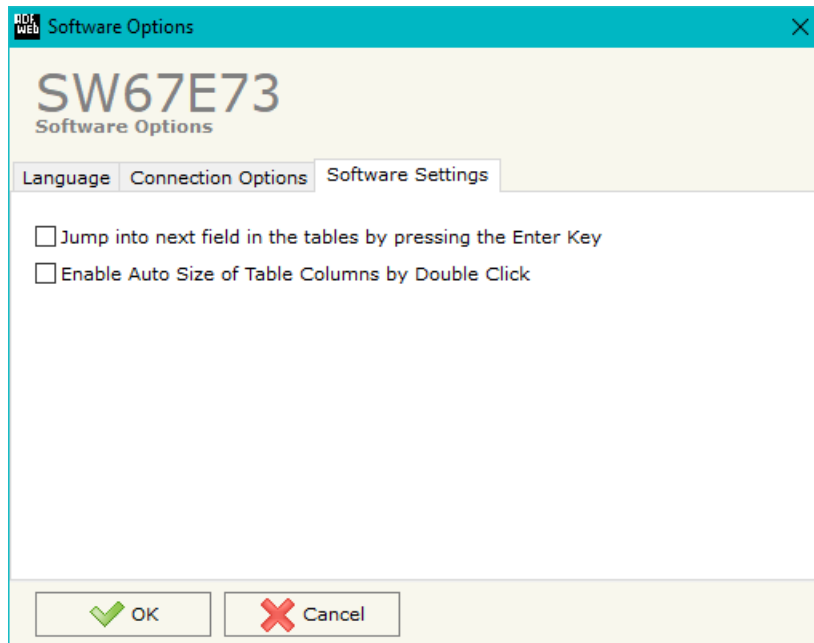
SOFTWARE OPTIONS:

By pressing the “**Settings**” () button there is the possibility to change the language of the software and check the updatings for the compositor.

In the section “Language” it is possible to change the language of the software.



In the section “Connection Options”, it is possible to check if there are some updatings of the software compositor in ADFweb.com website. Checking the option “**Check Software Update at Start of Program**”, the SW67E73 checks automatically if there are updatings when it is launched.



In the section "Software Settings", it is possible to enable/disable some keyboard's commands for an easier navigation inside the tables contained in the different sections of the software.

SET COMMUNICATION:

This section define the fundamental communication parameters of two buses, EtherCAT and PROFINET.

By Pressing the **"Set Communication"** button from the main window for SW67E73 (Fig. 2) the window "Set Communication" appears (Fig. 3).

The means of the fields for "Ethernet Connection" are:

- In the field **"Device Name (Hostname)"** the Hostname to assign to the converter is defined;
- If the field **"Obtain an IP Address Automatically (DHCP for Cable Connection)"** is checked, DHCP for LAN connection is enabled;
- If the field **"Enable DNS"** is checked, DNS protocol is enabled;
- In the field **"Primary DNS"** the IP Address of the primary DNS server is defined;
- In the field **"Secondary DNS"** the IP Address of the secondary DNS server is defined.

The means of the fields for the "EtherCAT Master" section are:

- If the field **"Clear Data on EtherCAT Fault"** is checked, the data on PROFINET side is reset to '0' in case of EtherCAT fault;
- If the field **"Automatic Reset when EtherCAT Fails"** is checked, the converter restarts in case of EtherCAT error.

The means of the fields for the "PROFINET" section are:

- In the fields **"IP Address"** the IP address of PROFINET side of the converter is defined;
- In the fields **"SubNet Mask"** the SubNet Mask of PROFINET side of the converter is defined;
- In the fields **"Gateway"** the default gateway of the network is defined. This feature can be enabled or disabled pressing the Check Box field. This feature is used for going out of the net;
- In the field **"Tunneling Port"** the port to use for the "Tunneling mode" is defined;

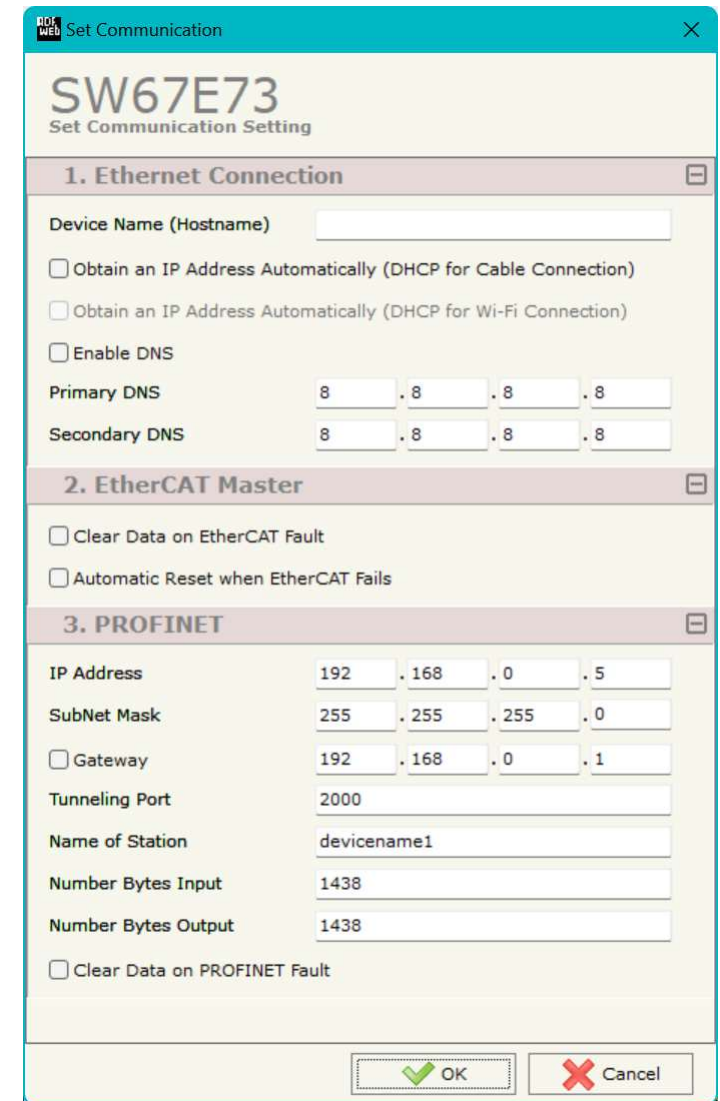


Figure 3: "Set Communication" window

- In the field "**Name of Station**" the name of PROFINET side of the converter is defined;
- In the field "**Number Bytes Input**" the number of byte from the PROFINET Master to the converter is defined;
- In the field "**Number Bytes Output** " the number of byte from the converter to the PROFINET Master is defined;
- If the field "**Clear Data on PROFINET Fault** " is checked, the data on EtherCAT side is reset to '0' in case of PROFINET fault.

ETHERCAT SET ACCESS:

By Pressing the “**EtherCAT Set Access**” button from the main window for SW67E73 (Fig. 2) the window “EtherCAT Master Access” appears (Fig. 4). This section is used to define the list of the EtherCAT slave devices to connect and the parameters to read/write.

SW67E73
EtherCAT Master Access

EtherCAT Master Devices List

N	Enable	Device Name	Vendor Name	Product Code	Revision Number	Node Address	Mnemonic
1	<input checked="" type="checkbox"/>	ifm IO-Link Master AL1331	ifm electronic	#x00001331	#x00000001	1	
2	<input checked="" type="checkbox"/>	R3-NECT1 EtherCAT Interface	M-System Co.,Ltd.	#x52330001	#x00000001	2	

Process Data **CoE Object**

EtherCAT Master Process Data

Process Data Input **Process Data Output**

N	Slot	Name	Type	Length	Position	Start Bit	Mnemonic
1		ifm IO-Link Master AL1331_TxPDO	USINT	8	0	0	
2		ifm IO-Link Master AL1331_TxPDO	USINT	8	1	0	
3		ifm IO-Link Master AL1331_TxPDO	USINT	8	2	0	
4		ifm IO-Link Master AL1331_TxPDO	USINT	8	3	0	
5		ifm IO-Link Master AL1331_TxPDO	USINT	8	4	0	

Figure 4a: “EtherCAT Master Access” window

Below the “**EtherCAT Master Devices List**”, the list of the EtherCAT devices to connect is defined. It is possible to import the slaves using the standard ESI file provided by the manufacturer of the device. For each node, it is necessary to indicate the “**Node Address**” into the related column. If a slave device has more device instances, it is possible to select them using “**Slots Config**” button.



Note:

The EtherCAT devices must be listed with the correct order, respecting the order of the physical connection to have a correct communication.

For each EtherCAT slave device, it is possible to define the map from/to the other bus for Process Data and for CoE objects. The list of accessible objects is imported directly from ESI file.

PROCESS DATA

Process Data CoE Object							
EtherCAT Master Process Data							
Process Data Input				Process Data Output			
N	Slot	Name	Type	Length	Position	Start Bit	Mnemonic
1		ifm IO-Link Master AL1331_TxPDO	USINT	8	0	0	
2		ifm IO-Link Master AL1331_TxPDO	USINT	8	1	0	
3		ifm IO-Link Master AL1331_TxPDO	USINT	8	2	0	
4		ifm IO-Link Master AL1331_TxPDO	USINT	8	3	0	
5		ifm IO-Link Master AL1331_TxPDO	USINT	8	4	0	

Figure 4b: "Process Data" table

The means of the fields are:

- In the field "**Slot**" the selected Slot is defined;
- In the field "**Name**" the name of the variable is defined;
- In the field "**Type**" the format of the EtherCAT variable is defined;
- In the field "**Length**" the dimension in bit of the variable is defined;
- In the field "**Position**" the starting address of the PROFINET array where the variable is mapped is defined;
- In the field "**Start Bit**" the starting bit of the selected Position where the variable is mapped is defined;
- In the field "**Mnemonic**" a description of the variable is defined.

CoE OBJECT

Process Data		CoE Object														
EtherCAT Master CoE Objects List																
N	Enable	Index	SubIndex	Name	Bit Length	Access	Pos Read	Start Bit R	Time Read	Pos Write	Start Bit W	On Change	On CMD	On Timer	Time	Mnemonic
1	<input type="checkbox"/>	#x1000	0	Device Type	32	ro						<input type="checkbox"/>	<input type="checkbox"/>	<input type="checkbox"/>		
2	<input type="checkbox"/>	#x1008	0	Manufacturer Device Name	112	ro						<input type="checkbox"/>	<input type="checkbox"/>	<input type="checkbox"/>		
3	<input type="checkbox"/>	#x1009	0	Manufacturer Hardware	200	ro						<input type="checkbox"/>	<input type="checkbox"/>	<input type="checkbox"/>		
4	<input type="checkbox"/>	#x100a	0	Manufacturer Software	256	ro						<input type="checkbox"/>	<input type="checkbox"/>	<input type="checkbox"/>		
5	<input type="checkbox"/>	#x1018	0	Number of entries	8	ro						<input type="checkbox"/>	<input type="checkbox"/>	<input type="checkbox"/>		
6	<input type="checkbox"/>	#x1018	1	Vendor Id	32	ro						<input type="checkbox"/>	<input type="checkbox"/>	<input type="checkbox"/>		

Figure 4c: "CoE Object" table

The means of the fields are:

- If the field "**Enable**" is checked, the EtherCAT variable is enabled;
- In the field "**Index**" the index of the EtherCAT variable is defined;
- In the field "**SubIndex**" the SubIndex of the EtherCAT variable is defined;
- In the field "**Name**" the name of the EtherCAT variable is defined;
- In the field "**Bit Length**" the dimension of the EtherCAT variable is defined;
- In the field "**Access**" the allowed access to the EtherCAT variable is defined;
- In the field "**Pos Read**" the starting address of the PROFINET array where the read value of the variable is mapped is defined;
- In the field "**Start Bit R**" the starting bit of the selected Position where the variable is mapped is defined;
- In the field "**Time Read**" the cyclical time in ms for the data reading is defined;
- In the field "**Pos Write**" the starting address of the PROFINET array where the value to write to the variable is taken is defined;
- In the field "**Start Bit R**" the starting bit of the selected Position where the value to write is taken is defined;
- If the field "**On Change**" is checked, the writing command is sent only when the data from PROFINET is changed;
- If the field "**On Timer**" is checked, the writing command is sent cyclically with the "**Time**" defined;
- In the field "**Mnemonic**" a description of the variable is defined.

UPDATE DEVICE:

By pressing the **"Update Device"** button, it is possible to load the created Configuration into the device; and also the Firmware, if necessary. This by using the Ethernet port.

If you don't know the actual IP address of the device you have to use this procedure:

- Turn OFF the Device;
- Put Dip1 of 'Dip-Switch A' in ON position;
- Turn ON the device
- Connect the Ethernet cable;
- Insert the IP **"192.168.2.205"**;
- Select which operations you want to do;
- Press the **"Execute update firmware"** button to start the upload;
- When all the operations are "OK" turn OFF the Device;
- Put Dip1 of 'Dip-Switch A' in OFF position;
- Turn ON the device.

If you know the actual IP address of the device, you have to use this procedure:

- Turn ON the Device with the Ethernet cable inserted;
- Insert the actual IP of the Converter;
- Select which operations you want to do;
- Press the **"Execute update firmware"** button to start the upload;
- When all the operations are "OK" the device automatically goes at Normal Mode.

At this point the configuration/firmware on the device is correctly updated.

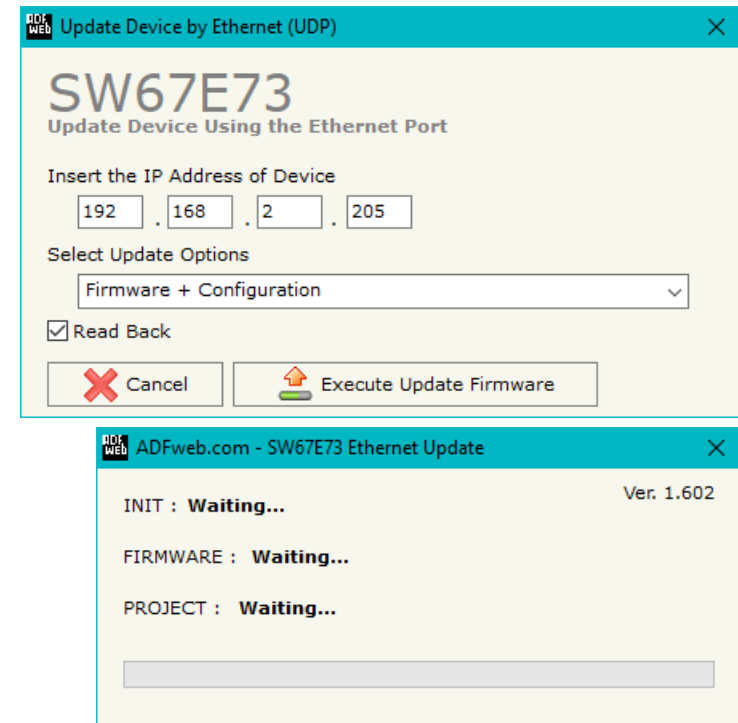


Figure 5: "Update device" windows


Note:

When you receive the device, for the first time, you also have to update the Firmware in the HD67E73 device.


Warning:

If Fig. 6 appears when you try to do the Update try these points before seeking assistance:

- ➔ Try to repeat the operations for the updating;
- ➔ Try with another PC;
- ➔ Try to restart the PC;
- ➔ Check the LAN settings;
- ➔ If you are using the program inside a Virtual Machine, try to use in the main Operating System;
- ➔ If you are using Windows Seven, Vista, 8, 10 or 11 make sure that you have the administrator privileges;
- ➔ In case you have to program more than one device, using the "UDP Update", you have to cancel the ARP table every time you connect a new device on Ethernet. For do this you have to launch the "Command Prompt" and write the command "arp -d". Pay attention that with Windows Vista, Seven, 8, 10 or 11 you have to launch the "Command Prompt" with Administrator Rights;
- ➔ Pay attention at Firewall lock.

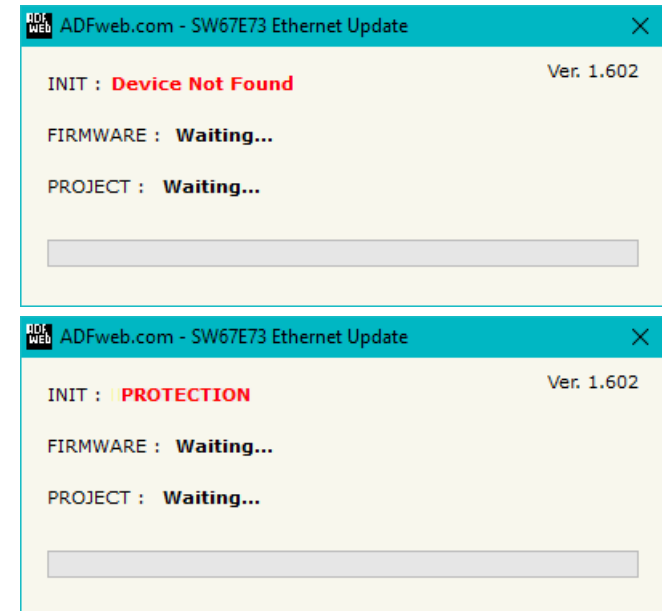


Figure 6: "Error" window


Warning:

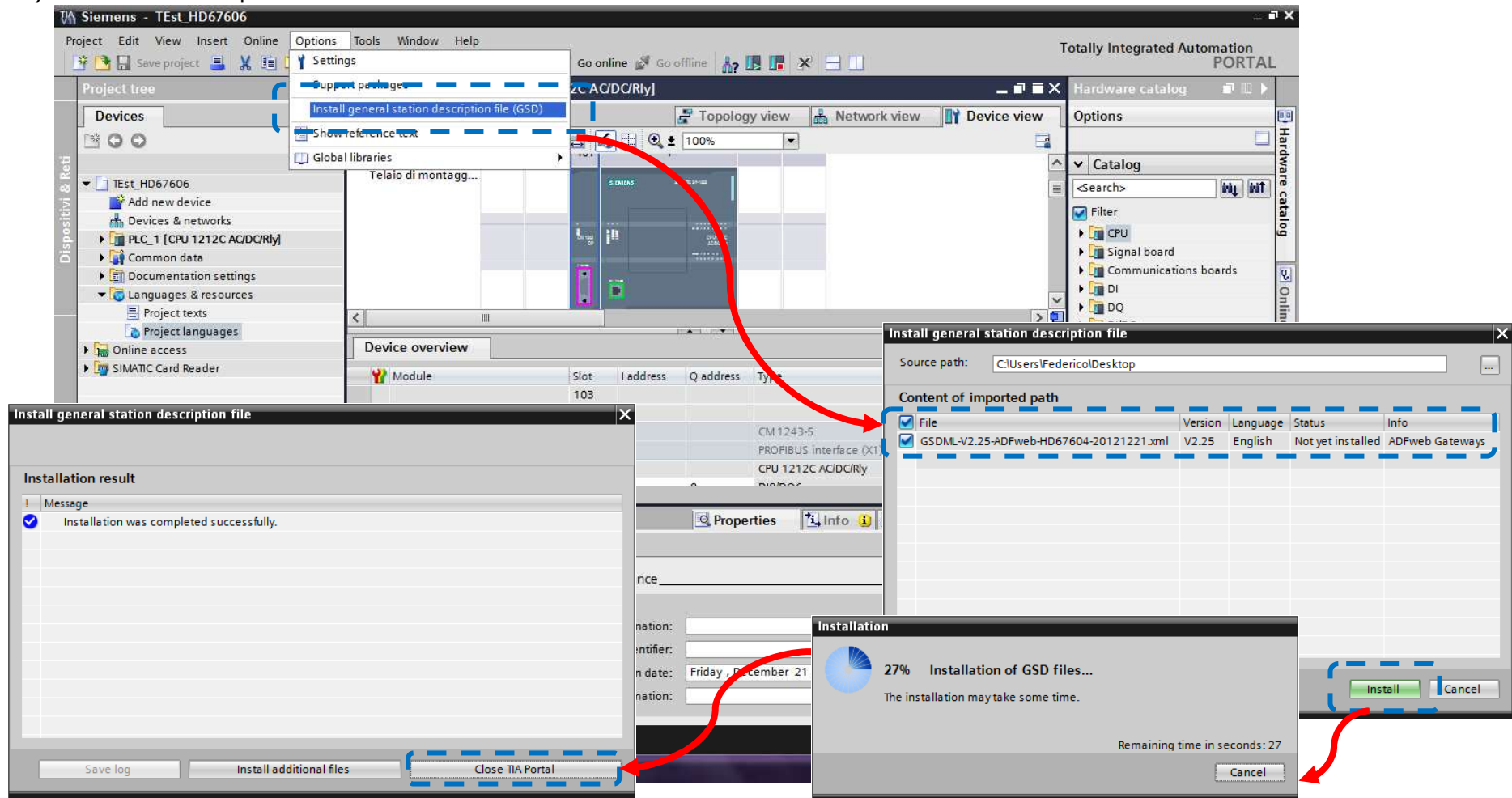
In the case of HD67E73 you have to use the software "HD67E73": www.adfweb.com/download/filefold/SW67E73.zip.

PLC CONFIGURATION:

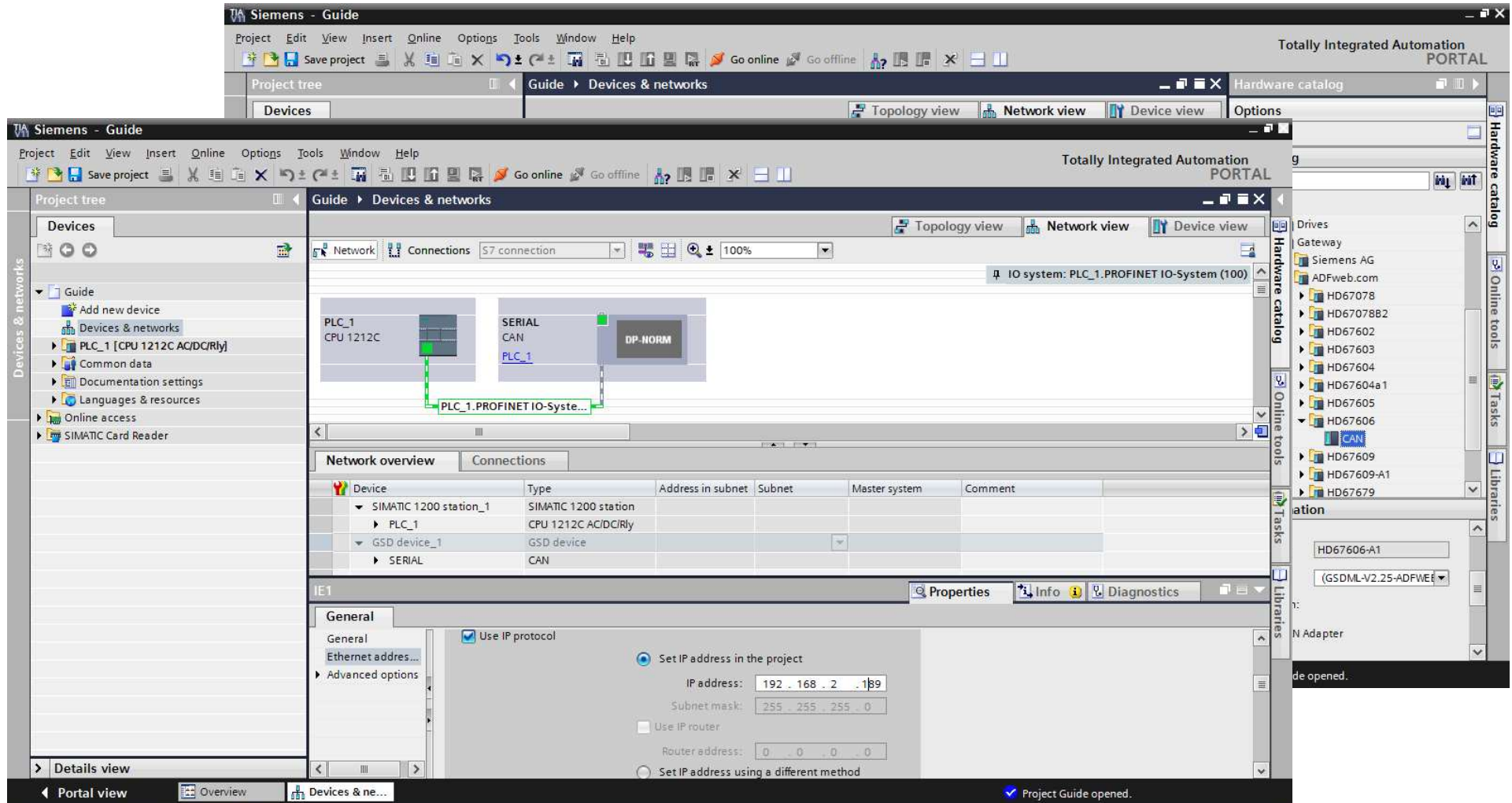
The configuration and commissioning of the PROFINET Converter as described on the following pages was accomplished with the help of the TIA Portal software by Siemens. In the case of using a control system from another supplier, refer to attend to the associated documentation.

These are the steps to follow:

- 1) Install the description file of the module.



- 2) Import the module in the network; connect the device to the PLC network and edit the parameters of IP, station name etc.



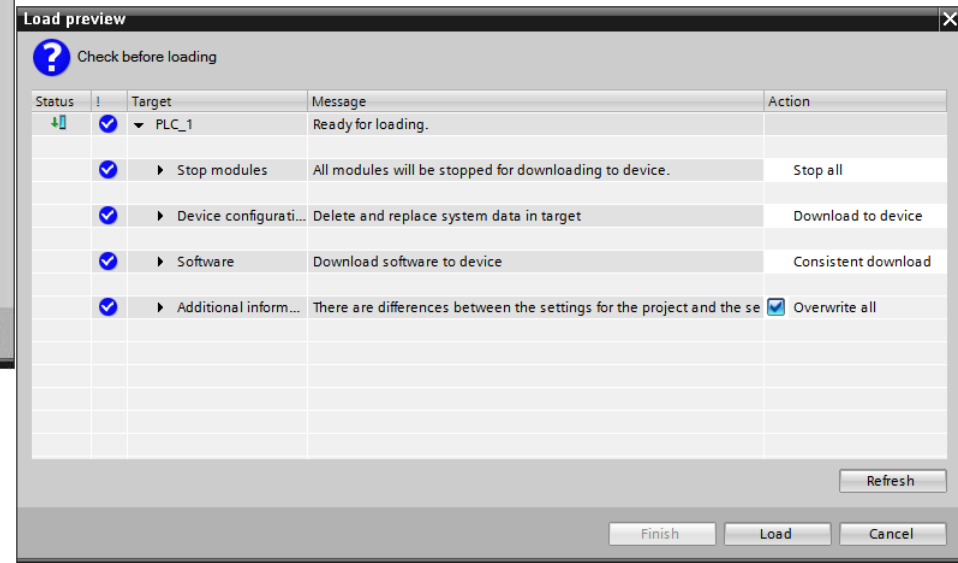
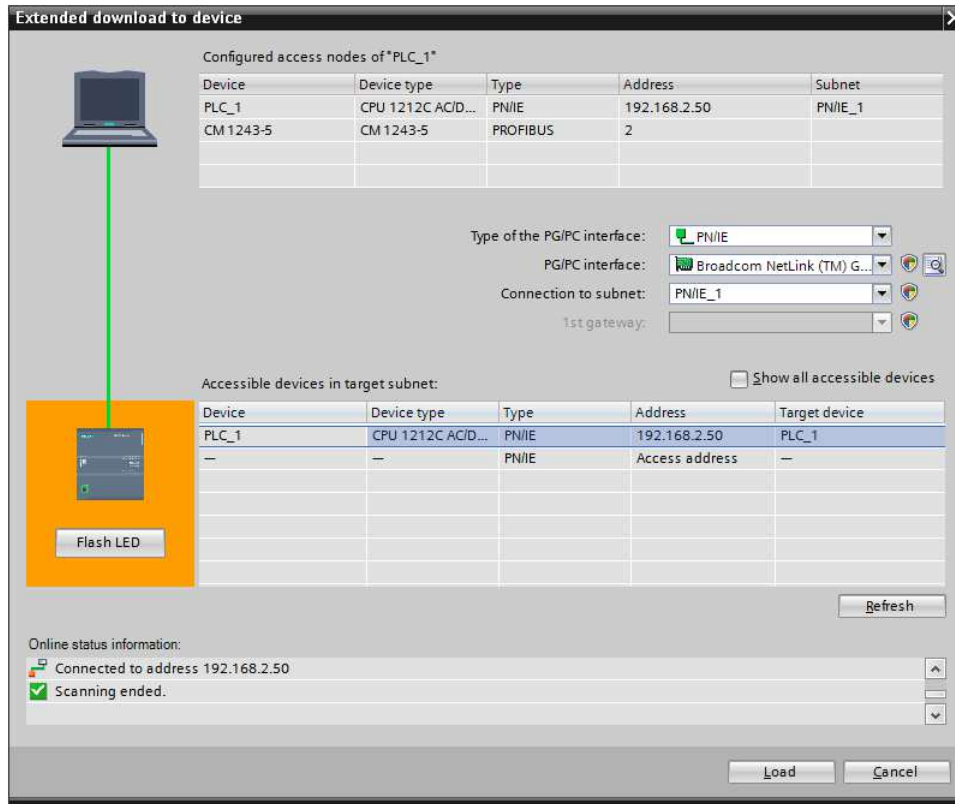
The screenshot displays the Siemens TIA Portal interface, specifically the 'Totally Integrated Automation PORTAL' window. The main workspace shows a network diagram with a 'PLC_1 CPU 1212C' connected to a 'SERIAL CAN' interface, which is then connected to a 'DP-NORM' interface. Below the diagram, the 'Network overview' table lists the devices and their properties.

Device	Type	Address in subnet	Subnet	Master system	Comment
▼ SIMATIC 1200 station_1	SIMATIC 1200 station				
▶ PLC_1	CPU 1212C AC/DC/Rly				
▼ GSD device_1	GSD device				
▶ SERIAL	CAN				

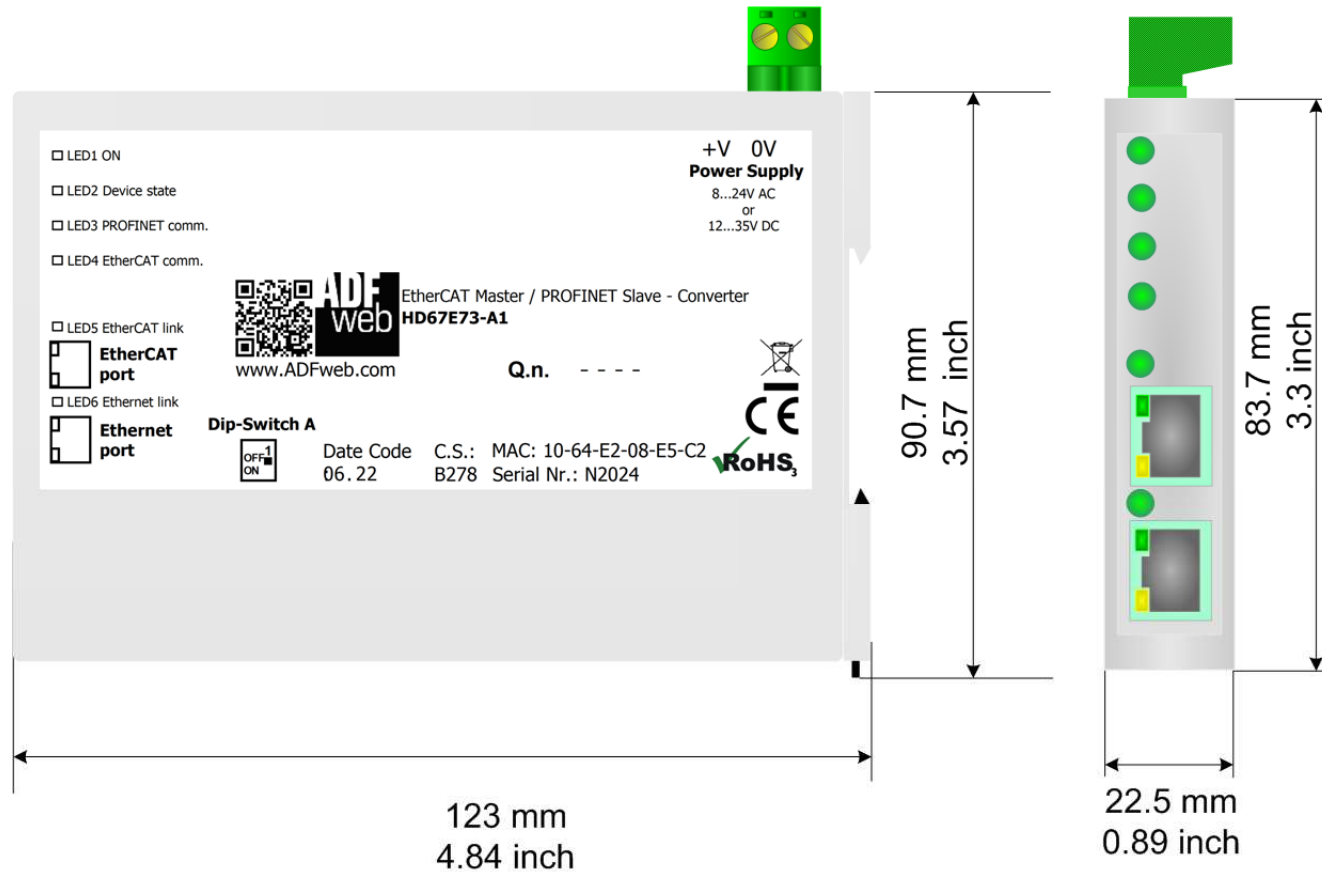
Below the table, the 'IE1' properties window is open, showing the 'General' tab. The 'Use IP protocol' checkbox is checked. The 'Set IP address in the project' radio button is selected, and the IP address is set to 192.168.2.189. The subnet mask is 255.255.255.0. The 'Use IP router' checkbox is unchecked, and the router address is 0.0.0.0. The 'Set IP address using a different method' radio button is also visible.

The right-hand side of the interface shows the 'Hardware catalog' with a list of drives and gateways, including Siemens AG, ADFweb.com, and various HD67078, HD67602, HD67603, HD67604, HD67604a1, HD67605, HD67606, HD67609, HD67609-A1, and HD67679. The 'Online tools' and 'Libraries' tabs are also visible.

3) Load the configuration into the PLC.



MECHANICAL DIMENSIONS:



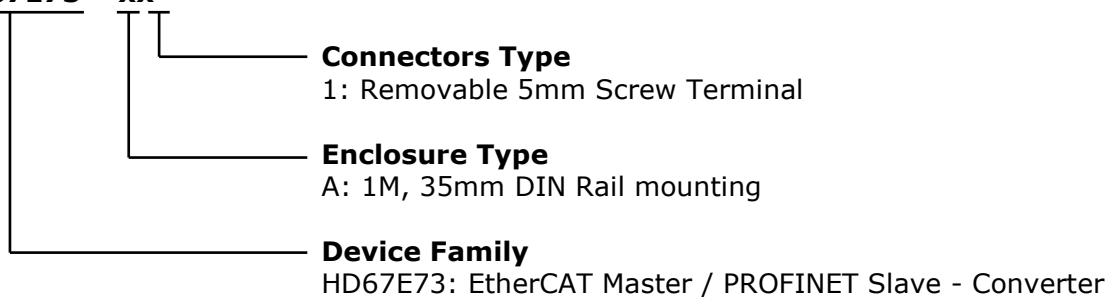
Housing: PC-ABS
Weight: 200g (Approx)

Figure 7: Mechanical dimensions scheme for HD67E73-A1

ORDERING INFORMATION:

The ordering part number is formed by a valid combination of the following:

HD67E73 - xx



Order Code: **HD67E73-A1** - EtherCAT Master / PROFINET Slave – Converter

ACCESSORIES:

Order Code: **AC34011** - 35mm Rail DIN - Power Supply 220/240V AC 50/60Hz – 12 V DC

Order Code: **AC34012** - 35mm Rail DIN - Power Supply 220/240V AC 50/60Hz – 24 V DC

DISCLAIMER:

All technical content within this document can be modified without notice. The content of the document is a under continual renewal. For losses due to fire, earthquake, third party access or other accidents, or intentional or accidental abuse, misuse, or use under abnormal conditions repairs are charged to the user. ADFweb.com S.r.l. will not be liable for accidental loss of use or inability to use this product, such as loss of business income. ADFweb.com S.r.l. shall not be liable for consequences of improper use.

OTHER REGULATIONS AND STANDARDS:**WEEE INFORMATION**

Disposal of old electrical and electronic equipment (as in the European Union and other European countries with separate collection systems).

— This symbol on the product or on its packaging indicates that this product may not be treated as household rubbish. Instead, it should be taken to an applicable collection point for the recycling of electrical and electronic equipment. If the product is disposed correctly, you will help prevent potential negative environmental factors and impact of human health, which could otherwise be caused by inappropriate disposal. The recycling of materials will help to conserve natural resources. For more information about recycling this product, please contact your local city office, your household waste disposal service or the shop where you purchased the product.

RESTRICTION OF HAZARDOUS SUBSTANCES DIRECTIVE

The device respects the 2002/95/EC Directive on the restriction of the use of certain hazardous substances in electrical and electronic equipment (commonly referred to as Restriction of Hazardous Substances Directive or RoHS).

CE MARKING

The product conforms with the essential requirements of the applicable EC directives.

WARRANTIES AND TECHNICAL SUPPORT:

For fast and easy technical support for your ADFweb.com SRL products, consult our internet support at www.adfweb.com. Otherwise contact us at the address support@adfweb.com

RETURN POLICY:

If while using your product you have any problem and you wish to exchange or repair it, please do the following:

- Obtain a Product Return Number (PRN) from our internet support at www.adfweb.com. Together with the request, you need to provide detailed information about the problem.
- Send the product to the address provided with the PRN, having prepaid the shipping costs (shipment costs billed to us will not be accepted).

If the product is within the warranty of twelve months, it will be repaired or exchanged and returned within three weeks. If the product is no longer under warranty, you will receive a repair estimate.



ADFweb.com S.r.l.
Via Strada Nuova, 17
IT-31010 Mareno di Piave
TREVISO (Italy)
Phone +39.0438.30.91.31
Fax +39.0438.49.20.99
www.adfweb.com

