

# User Manual

Revision 1.000

English

## PROFINET Master / LoRaWAN Gateway - Converter

(Order Code: HD67F32-B2-xxxMHz)

For Website information:

[www.adfweb.com?Product=HD67F32-B2](http://www.adfweb.com?Product=HD67F32-B2)

For Price information:

[www.adfweb.com?Price=HD67F32-B2-xxxMHz](http://www.adfweb.com?Price=HD67F32-B2-xxxMHz)

### Benefits and Main Features:

- ⚡ Power Supply 12...35V DC and 8...24 V AC
- ⚡ Temperature range: -40°C/+85°C (-40°F/+185°F)



User Manual

For others LoRaWAN products, see also the following links:

### Converter LoRaWAN to

[www.adfweb.com?Product=HD67F01](http://www.adfweb.com?Product=HD67F01)  
[www.adfweb.com?Product=HD67F02](http://www.adfweb.com?Product=HD67F02)  
[www.adfweb.com?Product=HD67F03](http://www.adfweb.com?Product=HD67F03)  
[www.adfweb.com?Product=HD67F04](http://www.adfweb.com?Product=HD67F04)  
[www.adfweb.com?Product=HD67F05](http://www.adfweb.com?Product=HD67F05)  
[www.adfweb.com?Product=HD67F15](http://www.adfweb.com?Product=HD67F15)  
[www.adfweb.com?Product=HD67F16](http://www.adfweb.com?Product=HD67F16)  
[www.adfweb.com?Product=HD67F17](http://www.adfweb.com?Product=HD67F17)  
[www.adfweb.com?Product=HD67F18](http://www.adfweb.com?Product=HD67F18)  
[www.adfweb.com?Product=HD67F19](http://www.adfweb.com?Product=HD67F19)  
[www.adfweb.com?Product=HD67F20](http://www.adfweb.com?Product=HD67F20)  
[www.adfweb.com?Product=HD67F21](http://www.adfweb.com?Product=HD67F21)  
[www.adfweb.com?Product=HD67F22](http://www.adfweb.com?Product=HD67F22)  
[www.adfweb.com?Product=HD67F23](http://www.adfweb.com?Product=HD67F23)  
[www.adfweb.com?Product=HD67F24](http://www.adfweb.com?Product=HD67F24)  
[www.adfweb.com?Product=HD67F25](http://www.adfweb.com?Product=HD67F25)  
[www.adfweb.com?Product=HD67F26](http://www.adfweb.com?Product=HD67F26)  
[www.adfweb.com?Product=HD67F27](http://www.adfweb.com?Product=HD67F27)  
[www.adfweb.com?Product=HD67F28](http://www.adfweb.com?Product=HD67F28)  
[www.adfweb.com?Product=HD67F29](http://www.adfweb.com?Product=HD67F29)  
[www.adfweb.com?Product=HD67F30](http://www.adfweb.com?Product=HD67F30)  
[www.adfweb.com?Product=HD67F31](http://www.adfweb.com?Product=HD67F31)  
[www.adfweb.com?Product=HD67F33](http://www.adfweb.com?Product=HD67F33)  
[www.adfweb.com?Product=HD67F34](http://www.adfweb.com?Product=HD67F34)  
[www.adfweb.com?Product=HD67F35](http://www.adfweb.com?Product=HD67F35)  
[www.adfweb.com?Product=HD67F36](http://www.adfweb.com?Product=HD67F36)  
[www.adfweb.com?Product=HD67F37](http://www.adfweb.com?Product=HD67F37)  
[www.adfweb.com?Product=HD67F38](http://www.adfweb.com?Product=HD67F38)  
[www.adfweb.com?Product=HD67F39](http://www.adfweb.com?Product=HD67F39)  
[www.adfweb.com?Product=HD67F40](http://www.adfweb.com?Product=HD67F40)  
[www.adfweb.com?Product=HD67F41](http://www.adfweb.com?Product=HD67F41)

**(Modbus Master)**  
**(Modbus Slave)**  
**(Modbus TCP Master)**  
**(Modbus TCP Slave)**  
**(Serial)**  
**(M-Bus)**  
**(BACnet Master)**  
**(BACnet Slave)**  
**(Ethernet)**  
**(CAN)**  
**(CANopen)**  
**(DeviceNet Master)**  
**(DeviceNet Slave)**  
**(DMX)**  
**(EtherNet/IP Master)**  
**(EtherNet/IP Slave)**  
**(J1939)**  
**(KNX)**  
**(NMEA 0183)**  
**(NMEA 2000)**  
**(PROFIBUS Master)**  
**(PROFIBUS Slave)**  
**(PROFINET Slave)**  
**(IEC61850 Client)**  
**(IEC61850 Server)**  
**(MQTT)**  
**(OPC UA Client)**  
**(OPC UA Server)**  
**(S7comm)**  
**(SNMP Manager)**  
**(SNMP Agent)**

## INDEX:

	Page
INDEX	2
UPDATED DOCUMENTATION	2
REVISION LIST	2
WARNING	2
TRADEMARKS	2
SECURITY ALERT	3
EXAMPLE OF CONNECTION	4
CONNECTION SCHEME	5
CHARACTERISTICS	6
CONFIGURATION	6
POWER SUPPLY	7
FUNCTION MODES	8
LEDS	9
LORAWAN	10
ETHERNET	11
USE OF COMPOSITOR SW67F32	12
NEW CONFIGURATION / OPEN CONFIGURATION	13
SOFTWARE OPTIONS	14
SET COMMUNICATION	16
PROFINET ACCESS	18
LORAWAN ACCESS	21
UPDATE DEVICE	25
MECHANICAL DIMENSIONS	27
ORDERING INFORMATIONS	28
ACCESSORIES	28
DISCLAIMER	29
OTHER REGULATIONS AND STANDARDS	29
WARRANTIES AND TECHNICAL SUPPORT	30
RETURN POLICY	30

## UPDATED DOCUMENTATION:

Dear customer, we thank you for your attention and we remind you that you need to check that the following document is:

- ✚ Updated
- ✚ Related to the product you own

To obtain the most recently updated document, note the “document code” that appears at the top right-hand corner of each page of this document.

With this “Document Code” go to web page [www.adfweb.com/download/](http://www.adfweb.com/download/) and search for the corresponding code on the page. Click on the proper “Document Code” and download the updates.

## REVISION LIST:

Revision	Date	Author	Chapter	Description
1.000	19/07/2024	Ln	All	First release version

## WARNING:

ADFweb.com reserves the right to change information in this manual about our product without warning.

ADFweb.com is not responsible for any error this manual may contain.

## TRADEMARKS:

All trademarks mentioned in this document belong to their respective owners.

**SECURITY ALERT:****GENERAL INFORMATION**

To ensure safe operation, the device must be operated according to the instructions in the manual. When using the device, legal and safety regulation are required for each individual application. The same applies also when using accessories.

**INTENDED USE**

Machines and systems must be designed so the faulty conditions do not lead to a dangerous situation for the operator (i.e. independent limit switches, mechanical interlocks, etc.).

**QUALIFIED PERSONNEL**

The device can be used only by qualified personnel, strictly in accordance with the specifications. Qualified personnel are persons who are familiar with the installation, assembly, commissioning and operation of this equipment and who have appropriate qualifications for their job.

**RESIDUAL RISKS**

The device is state-of-the-art and is safe. The instruments can represent a potential hazard if they are inappropriately installed and operated by untrained personnel. These instructions refer to residual risks with the following symbol:

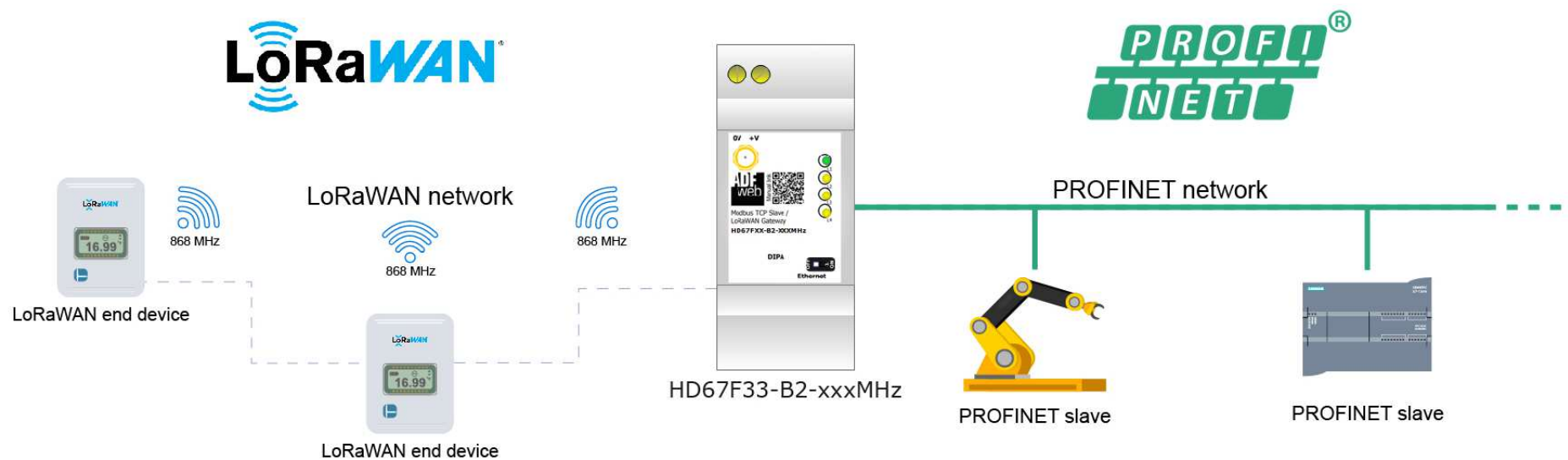


This symbol indicates that non-observance of the safety instructions is a danger for people that could lead to serious injury or death and / or the possibility of damage.

**CE CONFORMITY**

The declaration is made by our company. You can send an email to [support@adfweb.com](mailto:support@adfweb.com) or give us a call if you need it.

## EXAMPLE OF CONNECTION:



## CONNECTION SCHEME:

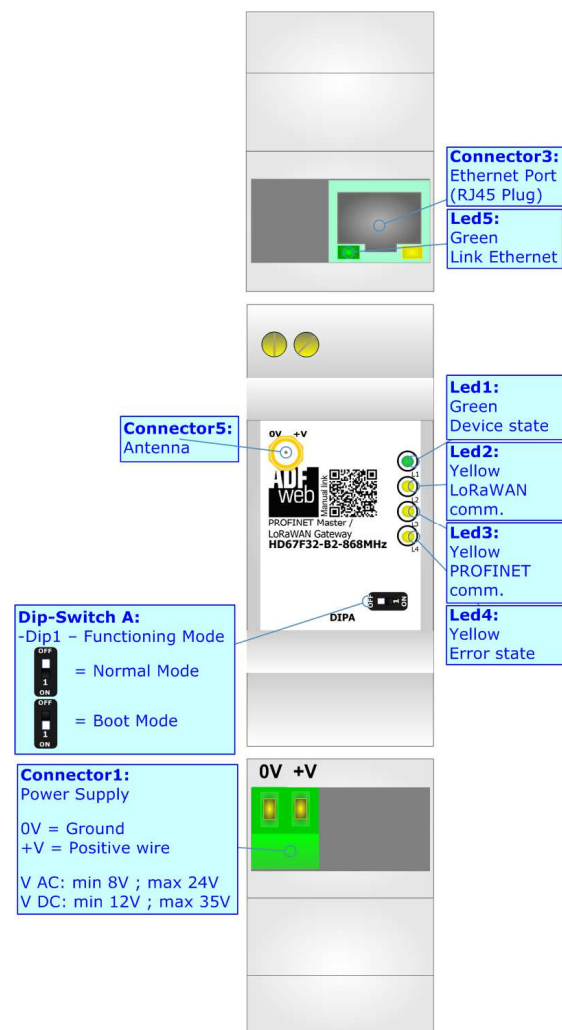


Figure 1: Connection scheme for HD67F32-B2-xxxMHz

**CHARACTERISTICS:**

The HD67F32-B2 is a PROFINET Master / LoRaWAN Gateway.

It allows the following characteristics:

- Electrical isolation between PROFINET and Power Supply;
- Mountable on 35mm Rail DIN;
- Wide power supply input range: 12...35V DC and 8...24V AC;
- Wide temperature range: -40°C / +85°C [-40°F / +185°F].

**CONFIGURATION:**

You need Compositor SW67F32 software on your PC in order to perform the following:

- Define the parameter of PROFINET line;
- Define the parameter of LoRaWAN line;
- Define the list of LoRaWAN end-devices to connect;
- Define the LoRaWAN messages to send/receive from each LoRaWAN end-device;
- Define the list of PROFINET slaves connected to the converter;
- Update the device.

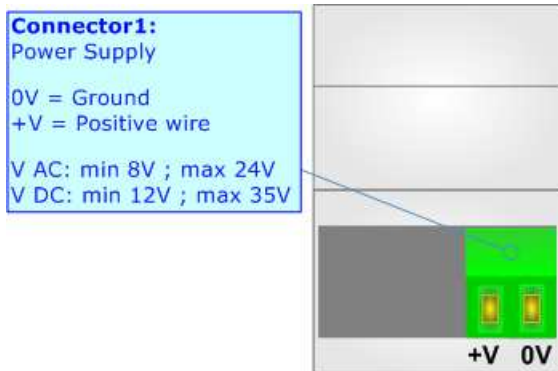
## POWER SUPPLY:

The devices can be powered at 8...24V AC and 12...35V DC. For more details see the two tables below.

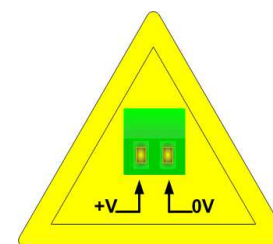
VAC 		VDC 	
Vmin	Vmax	Vmin	Vmax
8V	24V	12V	35V

Consumption at 24V DC:

Device	Consumption [W/VA]
HD67F32-B2-xxxMHz	3.5



**Caution: Not reverse the polarity power**



HD67F32-B2-xxxMHz

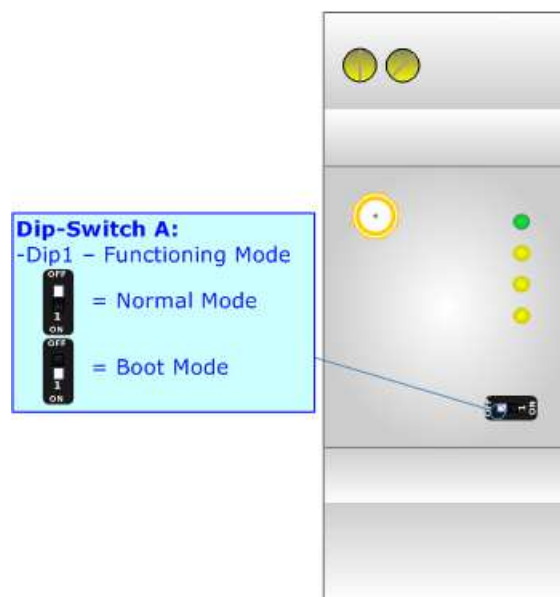
**FUNCTION MODES:**

The device has got two functions mode depending of the position of the 'Dip1 of Dip-Switch A':

- The first, with 'Dip1 of Dip-Switch A' at "OFF" position, is used for the normal working of the device.
- The second, with 'Dip1 of Dip-Switch A' at "ON" position, is used for upload the Project and/or Firmware.

For the operations to follow for the updating, see 'UPDATE DEVICE' section.

According to the functioning mode, the LEDs will have specifics functions, see 'LEDS' section.

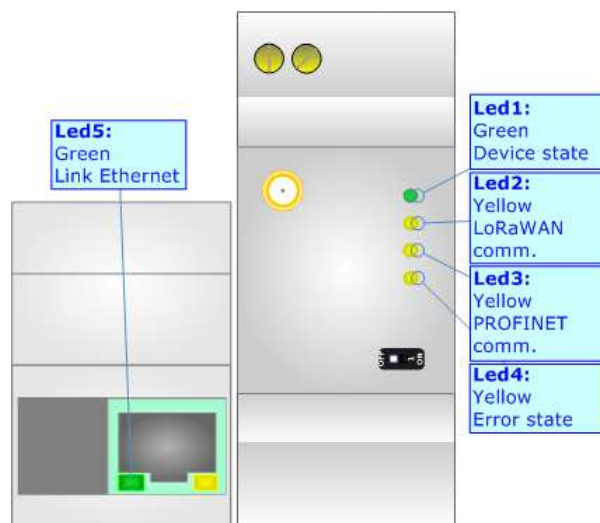




## LEDS:

The device has got five LEDs that are used to give information of the functioning status.  
The various meanings of the LEDs are described in the table below.

LED	Normal Mode	Boot Mode
1: Device State (green)	Blinks slowly ( $\sim 1\text{Hz}$ )	<b>Blinks quickly:</b> Boot state <b>Blinks very slowly (<math>\sim 0.5\text{Hz}</math>):</b> update in progress
2: LoRaWAN communication (yellow)	Blinks when a LoRaWAN message is received	<b>Blinks quickly:</b> Boot state <b>Blinks very slowly (<math>\sim 0.5\text{Hz}</math>):</b> update in progress
3: PROFINET communication (yellow)	Blinks when PROFINET communication is running	<b>Blinks quickly:</b> Boot state <b>Blinks very slowly (<math>\sim 0.5\text{Hz}</math>):</b> update in progress
4: Error state (yellow)	<b>ON:</b> An error in the communication busses occurs <b>OFF:</b> No errors are present	<b>Blinks quickly:</b> Boot state <b>Blinks very slowly (<math>\sim 0.5\text{Hz}</math>):</b> update in progress
5: Link Ethernet (Green)	<b>ON:</b> Ethernet cable inserted <b>OFF:</b> Ethernet cable not inserted	<b>ON:</b> Ethernet cable inserted <b>OFF:</b> Ethernet cable not inserted



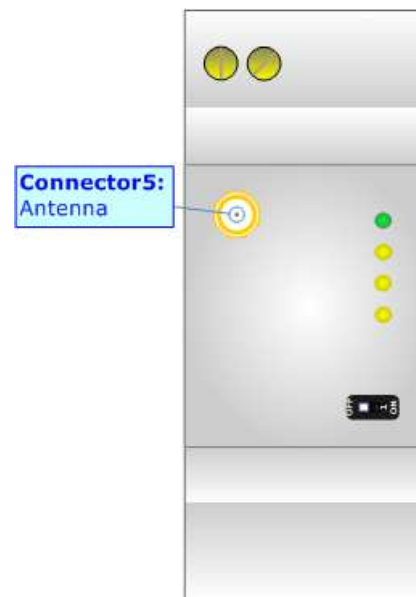
**LORAWAN:**

The LoRaWAN® specification is a Low Power, Wide Area (LPWA) networking protocol designed to wirelessly connect battery operated 'things' to the internet in regional, national or global networks, and targets key Internet of Things (IoT) requirements such as bi-directional communication, end-to-end security, mobility and localization services.

LoRaWAN® network architecture is deployed in a star-of-stars topology in which gateways relay messages between end-devices and a central network server.

The wireless communication takes advantage of the Long Range characteristics of the LoRa physical layer, allowing a single-hop link between the end-device and one or many gateways. All modes are capable of bi-directional communication, and there is support for multicast addressing groups to make efficient use of spectrum during tasks such as Firmware Over-The-Air (FOTA) upgrades or other mass distribution messages.

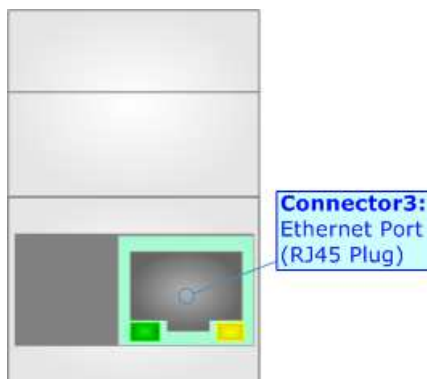
The converters support all the standard datarates and they work both on public and private networks.



**ETHERNET:**

The Ethernet port is used for PROFINET communication and for programming the device.

The Ethernet connection must be made using Connector3 of HD67F32-B2 with at least a Category 5E cable. The maximum length of the cable should not exceed 100m. The cable has to conform to the T568 norms relative to connections in cat.5 up to 100 Mbps. To connect the device to an Hub/Switch is recommended the use of a straight cable, to connect the device to a PC is recommended the use of a cross cable.



**USE OF COMPOSITOR SW67F32:**

To configure the Converter, use the available software that runs with Windows called SW67F32. It is downloadable on the site [www.adfweb.com](http://www.adfweb.com) and its operation is described in this document. The software works with MS Windows (XP, Vista, Seven, 8, 10 or 11; 32/64bit).

When launching the SW67F32, the window below appears (Fig. 2).

**Note:**

It is necessary to have installed .Net Framework 4.

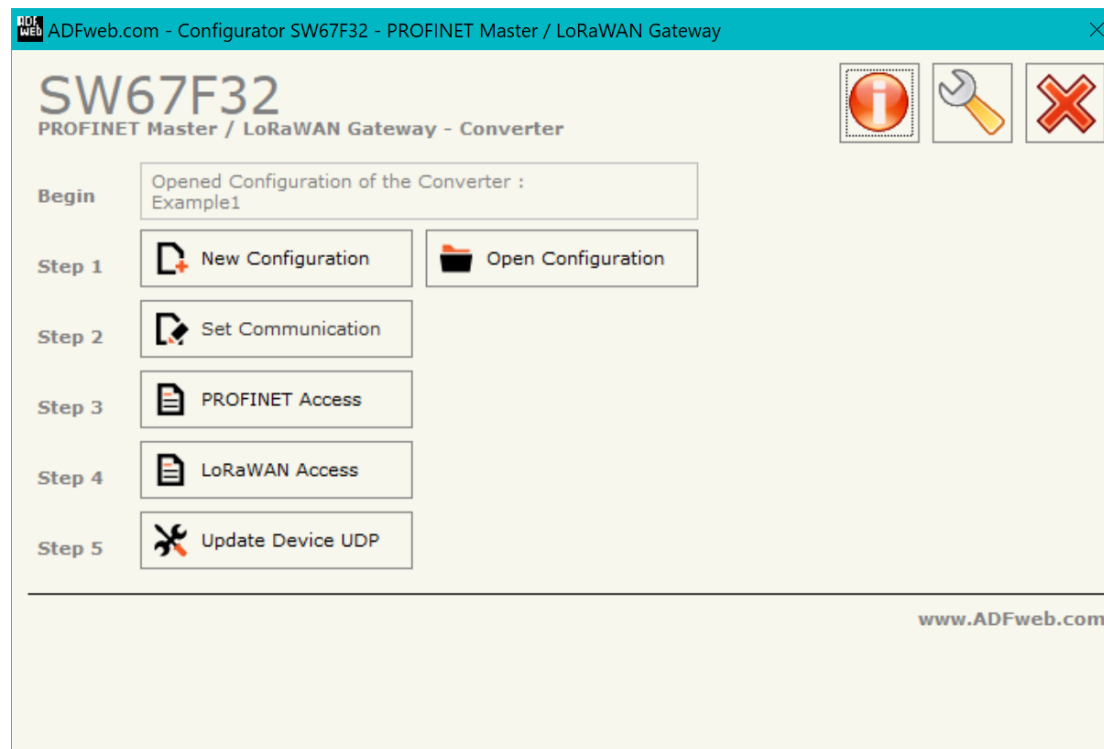
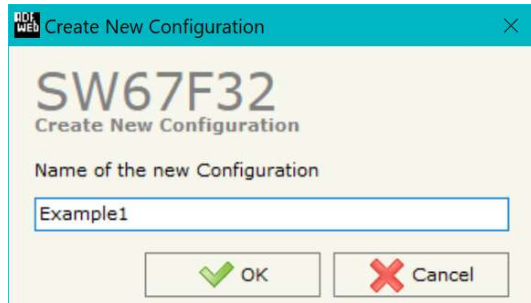


Figure 2: Main window for SW67F32

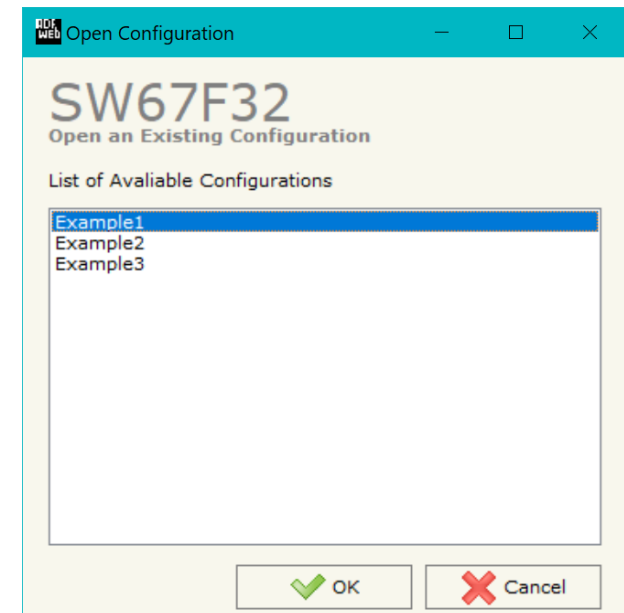
**NEW CONFIGURATION / OPEN CONFIGURATION:**

The “**New Configuration**” button creates the folder which contains the entire device’s configuration.




A device’s configuration can also be imported or exported:

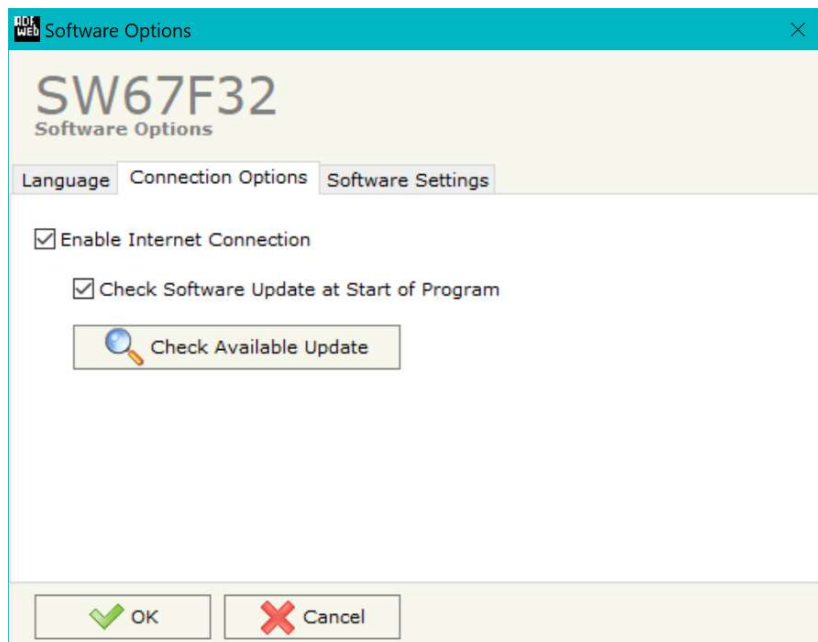
- To clone the configurations of a Programmable “PROFINET Master / LoRaWAN Gateway - Converter” in order to configure another device in the same manner, it is necessary to maintain the folder and all its contents;
- To clone a project in order to obtain a different version of the project, it is sufficient to duplicate the project folder with another name and open the new folder with the button “**Open Configuration**”.



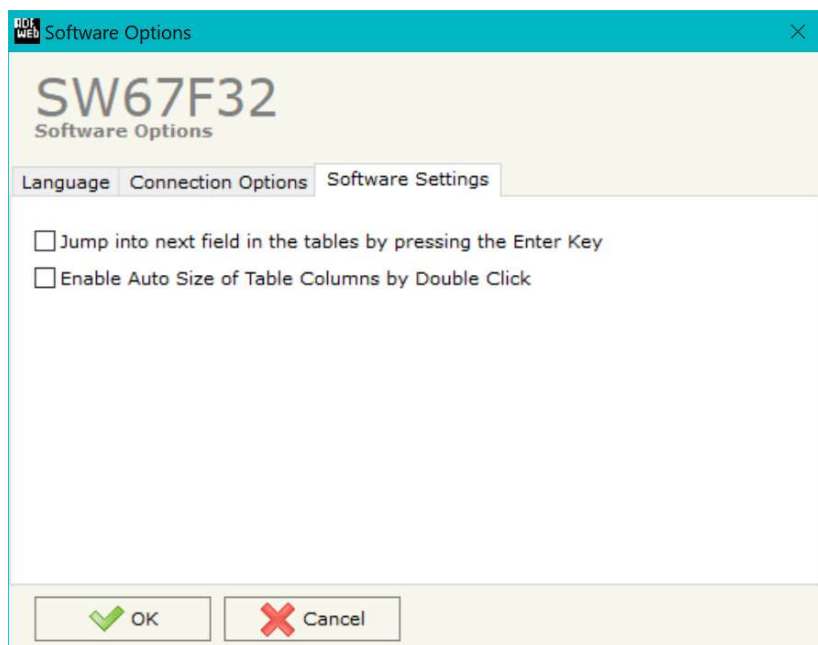
**SOFTWARE OPTIONS:**

By pressing the “**Settings**” () button there is the possibility to change the language of the software and check the updatings for the compositor.

In the section “Language” it is possible to change the language of the software.



In the section “Connection Options”, it is possible to check if there are some updatings of the software compositor in ADFweb.com website. Checking the option “**Check Software Update at Start of Program**”, the SW67F32 check automatically if there are updatings when it is launched.



In the section "Software Settings", it is possible to enable/disable some keyboard's commands for an easier navigation inside the tables contained in the different sections of the software.

## SET COMMUNICATION:

By Pressing the "**Set Communication**" button from the main window for SW67F32 (Fig. 2) the window "Set Communication" appears (Fig. 3).

The means of the fields for the "Ethernet Connection" section are:

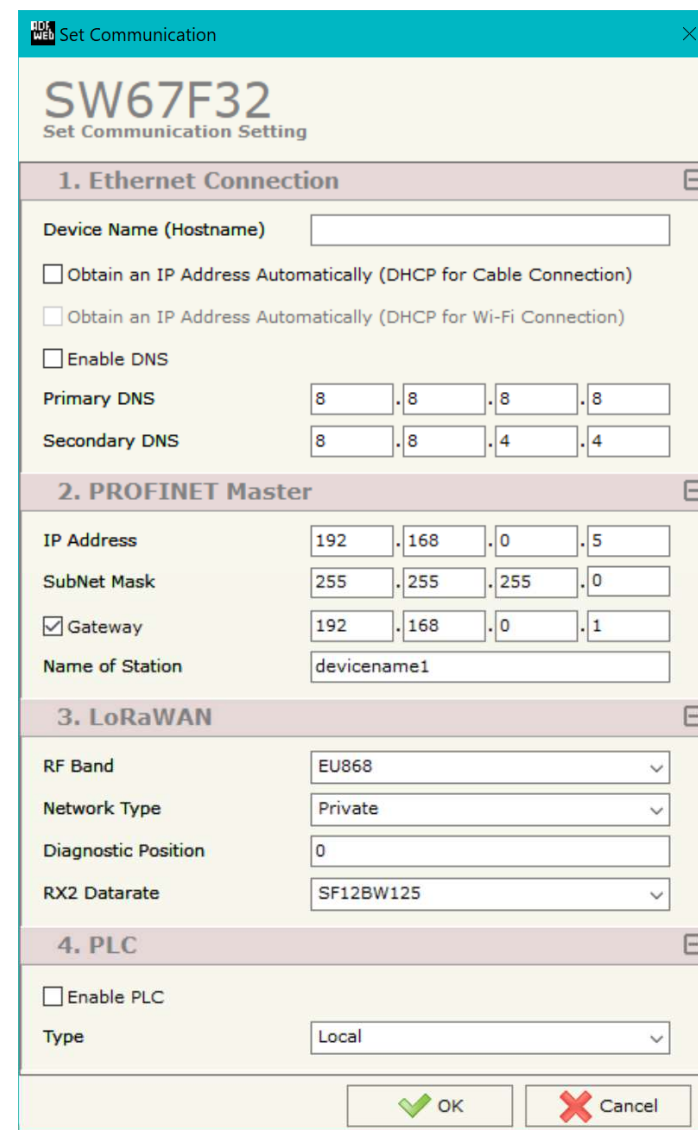
- In the field "**Device Name (Hostname)**" the Hostname to assign to the converter is defined;
- If the field "**Obtain an IP Address Automatically (DHCP for Cable Connection)**" is checked, DHCP for LAN connection is enabled;
- If the field "**Obtain an IP Address Automatically (DHCP for Wi-Fi Connection)**" is checked, DHCP for Wi-Fi connection is enabled;
- If the field "**Enable DNS**" is checked, DNS protocol is enabled;
- In the field "**Primary DNS**" the IP Address of the primary DNS server is defined;
- In the field "**Secondary DNS**" the IP Address of the secondary DNS server is defined.

The means of the fields for the "PROFINET Master" section are:

- In the fields "**IP Address**" the IP address for PROFINET side of the converter is defined;
- In the fields "**SubNet Mask**" the SubNet Mask for PROFINET side of the converter is defined;
- In the fields "**Gateway**" the default gateway of the net is defined. This feature can be enabled or disabled pressing the Check Box field. This feature is used for going out of the net;
- In the field "**Name of Station**" the name of PROFINET side of the converter is defined;

The means of the fields for the "LoRaWAN" section are:

- In the field "**RF Band**" the wireless band used for LoRaWAN communication is defined;
- In the field "**Network Type**" the type of LoRaWAN network is defined;



The screenshot shows the 'Set Communication' window for device SW67F32. The window is divided into four main sections:

- 1. Ethernet Connection:** Includes a text field for 'Device Name (Hostname)', checkboxes for 'Obtain an IP Address Automatically (DHCP for Cable Connection)' and 'Obtain an IP Address Automatically (DHCP for Wi-Fi Connection)', a checkbox for 'Enable DNS', and IP address fields for 'Primary DNS' (8.8.8.8) and 'Secondary DNS' (8.8.4.4).
- 2. PROFINET Master:** Includes IP address fields for 'IP Address' (192.168.0.5), 'SubNet Mask' (255.255.255.0), and 'Gateway' (192.168.0.1). It also has a checked 'Gateway' checkbox and a text field for 'Name of Station' (devicename1).
- 3. LoRaWAN:** Includes dropdown menus for 'RF Band' (EU868), 'Network Type' (Private), a text field for 'Diagnostic Position' (0), and a dropdown for 'RX2 Datarate' (SF12BW125).
- 4. PLC:** Includes a checkbox for 'Enable PLC' and a dropdown for 'Type' (Local).

At the bottom right, there are 'OK' and 'Cancel' buttons.

Figure 3: "Set Communication" window



- In the field "**Diagnostic Position**" it is possible to define an offset into the internal memory array where the status of the LoRaWAN end devices configured is saved. The diagnostic is made bit to bit, so each bit will represent a status of a single end device:
  - 1 → End device connected;
  - 0 → End device not connected.The bits' order will be the same of the end devices' definition inside the LoRaWAN Access section;
- In the field "**RX2 Datarate**" the data rate on RX2 window is defined.

The means of the fields for the "PLC" section are:

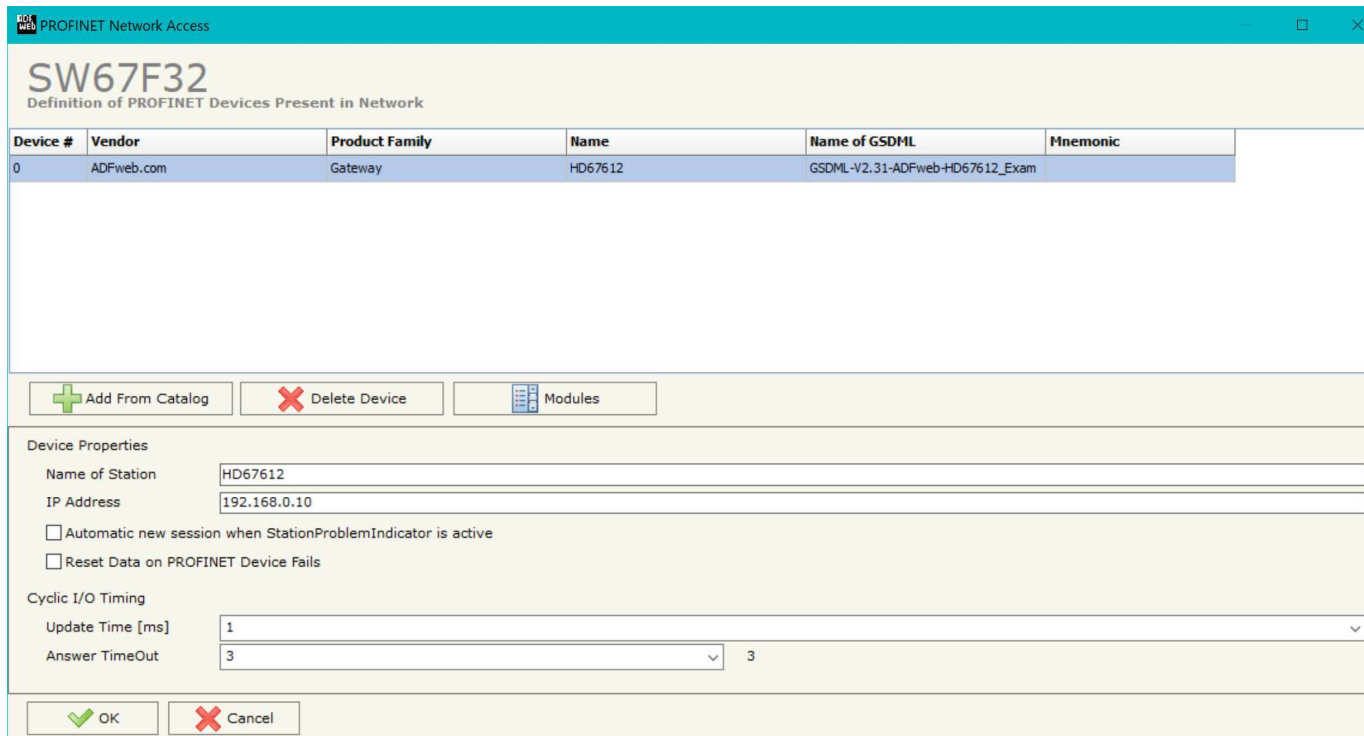
- If the field "**Enable PLC**" is checked, the PLC functionalities are enabled. It is possible to write a simple program (Ladder or ST) to make data elaboration directly inside the module. The program is written using "ADF\_PLC" software;
- In the field "**Type**" the type of PLC is defined. It is possible to have a local PLC or manage remotely via cloud.

## PROFINET ACCESS:

By Pressing the “**PROFINET Access**” button from the main window for SW67F32 (Fig. 2) the window “Definition of PROFINET Devices Present in Network” appears (Fig. 4).

This section is used to define the list of the

PROFINET slaves to read/write with the PROFINET Master. It is possible to add the PROFINET slaves from the hardware catalog. If a new device will be connected, it is possible to instal the GSDML file.



**SW67F32**  
Definition of PROFINET Devices Present in Network

Device #	Vendor	Product Family	Name	Name of GSDML	Mnemonic
0	ADFweb.com	Gateway	HD67612	GSDML-V2.31-ADFweb-HD67612_Exam	

**Device Properties**

Name of Station:

IP Address:

☐ Automatic new session when StationProblemIndicator is active  
☐ Reset Data on PROFINET Device Fails

**Cyclic I/O Timing**


Update Time [ms]:

Answer TimeOut:  3

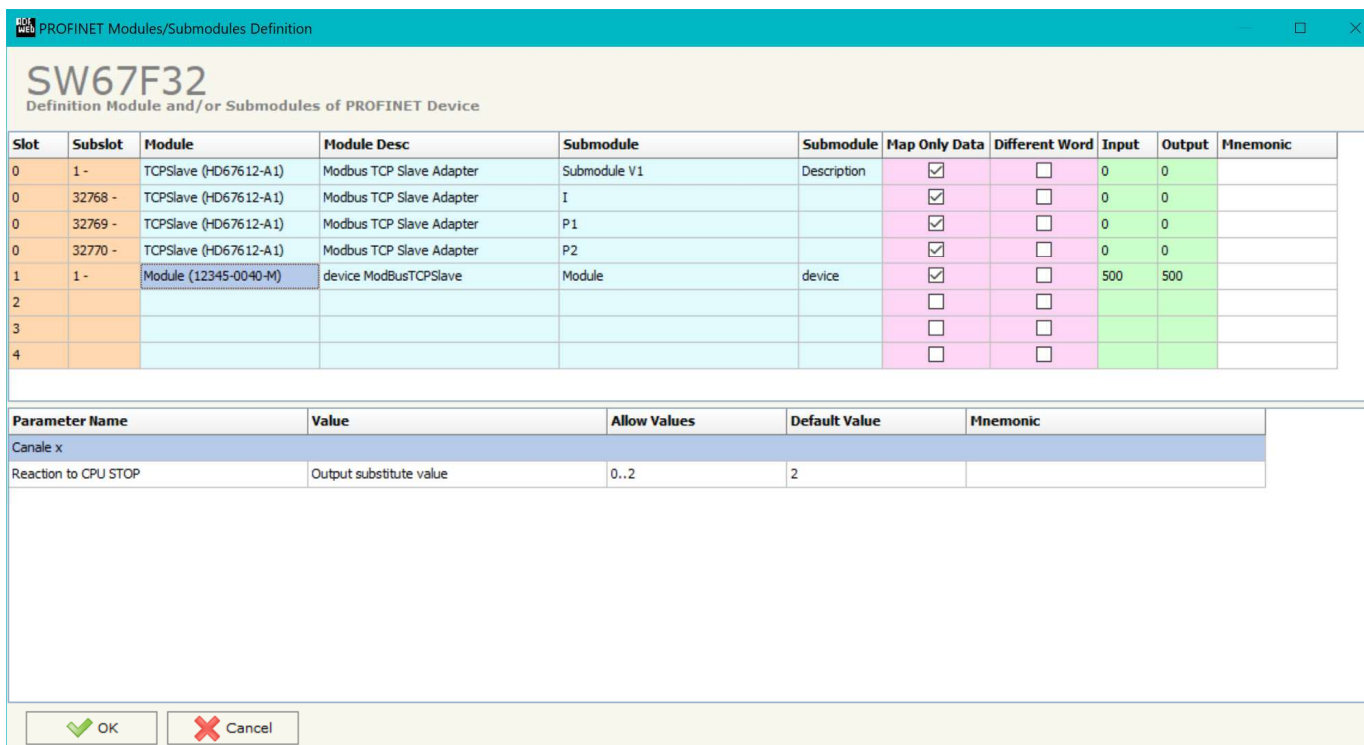
Figure 4: "Definition of PROFINET Devices Present in Network" window

The means of the fields below are:

- ➔ In the field "**Name of Station**" is checked, the name of the PROFINET slave is defined;
- ➔ In the field "**IP Address**" the IP Address of the PROFINET slave is defined;
- ➔ If the field "**Automatic new session when StationProblemIndicator is Active**" is checked, the converter opens a new communication session when an error is present in the slave station;
- ➔ If the field "**Reset Data on PROFINET Device Fails**" is checked, the converter sets to 0 the data on IO-Link side when the PROFINET communication fails;
- ➔ In the field "**Update Time [ms]**" the delay used for IO communication is defined;
- ➔ In the field "**Answer TimeOut**" the allowed number of cycles without response from the slave is defined.

 Warning:  
The data from/to the slaves are mapped consecutively into the IN/OUT PROFINET arrays, following the order with which they are defined.

By clicking on “**Modules**” button, it is possible to import the modules for the selected PROFINET slave device. The window “Definition Module and/or Submodules of PROFINET Device” appears (Fig. 5). In the main table it is possible to import the Modules of the PROFINET device in use. In the properties below, it is possible to set the parameters of the slave. These options depends on the slave in use, refer to the manual of the PROFINET device.



**SW67F32**  
Definition Module and/or Submodules of PROFINET Device

Slot	Subslot	Module	Module Desc	Submodule	Submodule	Map Only Data	Different Word	Input	Output	Mnemonic
0	1 -	TCPSlave (HD676 12-A1)	Modbus TCP Slave Adapter	Submodule V1	Description	<input checked="" type="checkbox"/>	<input type="checkbox"/>	0	0	
0	32768 -	TCPSlave (HD676 12-A1)	Modbus TCP Slave Adapter	I		<input checked="" type="checkbox"/>	<input type="checkbox"/>	0	0	
0	32769 -	TCPSlave (HD676 12-A1)	Modbus TCP Slave Adapter	P1		<input checked="" type="checkbox"/>	<input type="checkbox"/>	0	0	
0	32770 -	TCPSlave (HD676 12-A1)	Modbus TCP Slave Adapter	P2		<input checked="" type="checkbox"/>	<input type="checkbox"/>	0	0	
1	1 -	Module (12345-0040-M)	device ModBusTCP Slave	Module	device	<input checked="" type="checkbox"/>	<input type="checkbox"/>	500	500	
2						<input type="checkbox"/>	<input type="checkbox"/>			
3						<input type="checkbox"/>	<input type="checkbox"/>			
4						<input type="checkbox"/>	<input type="checkbox"/>			

Parameter Name	Value	Allow Values	Default Value	Mnemonic
Canale x				
Reaction to CPU STOP	Output substitute value	0..2	2	

OK Cancel

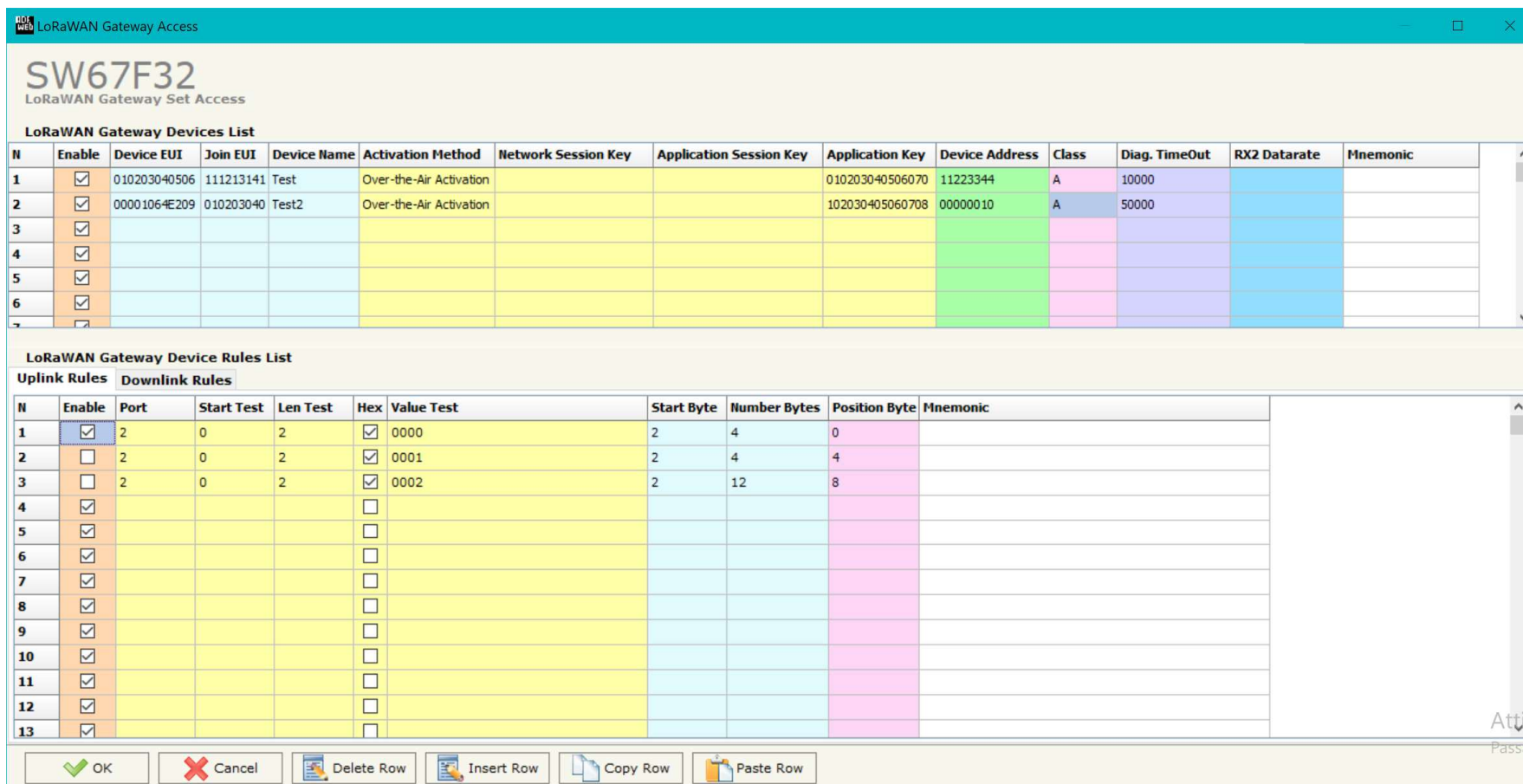
Figure 5: “Definition Module and/or Submodules of PROFINET Device” window

The means of the checkboxes inside the table are:

- If the field “**Map Only Data**” is checked, only the data of the modules are mapped into the IO-Link map. Otherwise, for each module there will be the status of IN and OUT areas too (1 byte);
- If the field “**Different Word**” is checked, the data of the different modules are mapped in different and consecutive words.

## LORAWAN ACCESS:

By Pressing the “**LoRaWAN Access**” button from the main window for SW67F32 (Fig. 2) the window “LoRaWAN Gateway Set Access” appears (Fig. 6). This section is used to define the LoRaWAN end devices that will connect to the converter and the list of LoRaWAN messages to read (Uplink Rules) and write (Downlink Rules) from each one.



N	Enable	Device EUI	Join EUI	Device Name	Activation Method	Network Session Key	Application Session Key	Application Key	Device Address	Class	Diag. TimeOut	RX2 Datarate	Mnemonic
1	<input checked="" type="checkbox"/>	010203040506	111213141	Test	Over-the-Air Activation			010203040506070	11223344	A	10000		
2	<input checked="" type="checkbox"/>	00001064E209	010203040	Test2	Over-the-Air Activation			102030405060708	00000010	A	50000		
3	<input checked="" type="checkbox"/>												
4	<input checked="" type="checkbox"/>												
5	<input checked="" type="checkbox"/>												
6	<input checked="" type="checkbox"/>												
7	<input checked="" type="checkbox"/>												

LoRaWAN Gateway Device Rules List										
Uplink Rules						Downlink Rules				
N	Enable	Port	Start Test	Len Test	Hex	Value Test	Start Byte	Number Bytes	Position Byte	Mnemonic
1	<input checked="" type="checkbox"/>	2	0	2	<input checked="" type="checkbox"/>	0000	2	4	0	
2	<input type="checkbox"/>	2	0	2	<input checked="" type="checkbox"/>	0001	2	4	4	
3	<input type="checkbox"/>	2	0	2	<input checked="" type="checkbox"/>	0002	2	12	8	
4	<input checked="" type="checkbox"/>				<input type="checkbox"/>					
5	<input checked="" type="checkbox"/>				<input type="checkbox"/>					
6	<input checked="" type="checkbox"/>				<input type="checkbox"/>					
7	<input checked="" type="checkbox"/>				<input type="checkbox"/>					
8	<input checked="" type="checkbox"/>				<input type="checkbox"/>					
9	<input checked="" type="checkbox"/>				<input type="checkbox"/>					
10	<input checked="" type="checkbox"/>				<input type="checkbox"/>					
11	<input checked="" type="checkbox"/>				<input type="checkbox"/>					
12	<input checked="" type="checkbox"/>				<input type="checkbox"/>					
13	<input checked="" type="checkbox"/>				<input type="checkbox"/>					

Figure 6a: "LoRAWAN Gateway Set Access" window

In the "**LoRaWAN Gateway Devices List**", the list of LoRaWAN end devices to connect is defined. The means of the fields for configuration are:

- If the field "**Enable**" is checked, the LoRaWAN end device is enabled;
- In the field "**Device EUI**" the Device EUI for the LoRaWAN device is defined;
- In the field "**Join EUI**" the Join EUI for the LoRaWAN device is defined;
- In the field "**Device Name**" the name of the LoRaWAN device is defined;
- In the field "**Activation Method**" the activation method for LoRaWAN device is defined;
- In the field "**Network Session Key**" the Network session key for LoRaWAN connection is defined;
- In the field "**Application Session Key**" the Application session key for LoRaWAN connection is defined;
- In the field "**Application Key**" the Application key for LoRaWAN connection is defined;
- In the field "**Device Address**" the address of the LoRaWAN device is defined;
- In the field "**Class**" the Class of the LoRaWAN device is defined;
- In the field "**Diag. TimeOut**" the timeout in ms for LoRaWAN communication is defined. If the LoRaWAN messages are received for this timeout, the correspondent bit for the diagnostic of PROFINET side is set to 1;
- In the field "**RX2 Datarate**" the datarate used into the RX2 window is defined (optional).
- In the field "**Mnemonic**" a description of the LoRaWAN device is defined.



**Note:**

It is recommended to set the "Diag. Timeout" with a higher time than the cyclic delay used by the LoRaWAN device to send data.

In the “**LoRaWAN Gateway Device Rules List**”, the list of rules to get LoRaWAN data from selected end device is defined. The table is splitted in two: “Uplink Rules” for the data to be received from LoRaWAN and mapped to PROFINET side and “Downlink Rules” for the data to be written from PROFINET to LoRaWAN side.

LoRaWAN Gateway Device Rules List										
Uplink Rules						Downlink Rules				
N	Enable	Port	Start Test	Len Test	Hex	Value Test	Start Byte	Number Bytes	Position Byte	Mnemonic
1	<input checked="" type="checkbox"/>	2	0	2	<input checked="" type="checkbox"/>	0000	2	4	0	
2	<input type="checkbox"/>	2	0	2	<input checked="" type="checkbox"/>	0001	2	4	4	
3	<input type="checkbox"/>	2	0	2	<input checked="" type="checkbox"/>	0002	2	12	8	
4	<input checked="" type="checkbox"/>				<input type="checkbox"/>					
5	<input checked="" type="checkbox"/>				<input type="checkbox"/>					
6	<input checked="" type="checkbox"/>				<input type="checkbox"/>					
7	<input checked="" type="checkbox"/>				<input type="checkbox"/>					
8	<input checked="" type="checkbox"/>				<input type="checkbox"/>					
9	<input checked="" type="checkbox"/>				<input type="checkbox"/>					
10	<input checked="" type="checkbox"/>				<input type="checkbox"/>					
11	<input checked="" type="checkbox"/>				<input type="checkbox"/>					
12	<input checked="" type="checkbox"/>				<input type="checkbox"/>					
13	<input checked="" type="checkbox"/>				<input type="checkbox"/>					

Figure 6b: “Uplink Rules” table

The means of the fields in the window “Uplink Rules” are the following:

- If the field “**Enable**” is checked, the LoRaWAN rule is enabled;
- In the field “**Port**” the port used for LoRaWAN communication is defined;
- In the field “**Start Test**” it is possible to define the starting byte to check (offset inside the LoRaWAN message) for recognizing specific LoRaWAN messages from end device (optional);
- In the field “**Len Test**” the number of bytes to check from the starting one is defined (optional);
- If the field “**Hex**” is checked, the data inside the LoRaWAN message is defined as Hex string (optional);
- In the field “**Value Test**” the data to look for inside the test bytes is defined (optional);
- In the field “**Start Byte**” the starting byte to save from the LoRaWAN message (offset) is defined;
- In the field “**Number Bytes**” the number of consecutive bytes to save from starting byte is defined;
- In the field “**Position Byte**” the address of PROFINET array where mapping the data from LoRaWAN is defined;
- In the field “**Mnemonic**” a description of the LoRaWAN rule is defined.

LoRaWAN Gateway Device Rules List										
Uplink Rules		Downlink Rules								
N	Enable	Port	Start Byte	Number Bytes	On Change	On CMD	On Timer	Time (ms)	Position Byte	Mnemonic
1	<input checked="" type="checkbox"/>	2	2	6	<input type="checkbox"/>	<input type="checkbox"/>	<input checked="" type="checkbox"/>	1000	0	
2	<input type="checkbox"/>	2	2	6	<input type="checkbox"/>	<input type="checkbox"/>	<input checked="" type="checkbox"/>	1000	4	
3	<input type="checkbox"/>	2	2	14	<input type="checkbox"/>	<input type="checkbox"/>	<input checked="" type="checkbox"/>	1000	8	
4	<input checked="" type="checkbox"/>				<input type="checkbox"/>	<input type="checkbox"/>	<input type="checkbox"/>			
5	<input checked="" type="checkbox"/>				<input type="checkbox"/>	<input type="checkbox"/>	<input type="checkbox"/>			
6	<input checked="" type="checkbox"/>				<input type="checkbox"/>	<input type="checkbox"/>	<input type="checkbox"/>			
7	<input checked="" type="checkbox"/>				<input type="checkbox"/>	<input type="checkbox"/>	<input type="checkbox"/>			
8	<input checked="" type="checkbox"/>				<input type="checkbox"/>	<input type="checkbox"/>	<input type="checkbox"/>			
9	<input checked="" type="checkbox"/>				<input type="checkbox"/>	<input type="checkbox"/>	<input type="checkbox"/>			
10	<input checked="" type="checkbox"/>				<input type="checkbox"/>	<input type="checkbox"/>	<input type="checkbox"/>			
11	<input checked="" type="checkbox"/>				<input type="checkbox"/>	<input type="checkbox"/>	<input type="checkbox"/>			
12	<input checked="" type="checkbox"/>				<input type="checkbox"/>	<input type="checkbox"/>	<input type="checkbox"/>			
13	<input checked="" type="checkbox"/>				<input type="checkbox"/>	<input type="checkbox"/>	<input type="checkbox"/>			

☒ OK
 ☐ Cancel

Figure 6c: "Downlink Rules" table

The means of the fields in the window "Uplink Rules" are the following:

- If the field "**Enable**" is checked, the LoRaWAN rule is enabled;
- In the field "**Port**" the port used for LoRaWAN communication is defined;
- In the field "**Start Byte**" the starting byte of the LoRaWAN message to write from PROFINET is defined;
- In the field "**Number Bytes**" the number of consecutive bytes to write from starting byte is PROFINET;
- If the field "**On Change**" is checked, the LoRaWAN message is sent only when the data from PROFINET change;
- If the field "**On CMD**" is checked, the LoRaWAN message is sent when a PROFINET request is received (not used);
- If the field "**On Timer**" is checked, the LoRaWAN message is sent cyclically with the delay defined in "**Time (ms)**" field;
- In the field "**Position Byte**" the address of PROFINET array from which taking the data is defined;
- In the field "**Mnemonic**" a description of the LoRaWAN rule is defined.



**UPDATE DEVICE:**

By pressing the **"Update Device"** button, it is possible to load the created Configuration into the device; and also the Firmware, if necessary. This by using the Ethernet port.

If you don't know the actual IP address of the device you have to use this procedure:

- Turn OFF the Device;
- Put Dip1 of 'Dip-Switch A' in ON position;
- Turn ON the device
- Connect the Ethernet cable;
- Insert the IP **"192.168.2.205"**;
- Select which operations you want to do;
- Press the **"Execute update firmware"** button to start the upload;
- When all the operations are "OK" turn OFF the Device;
- Put Dip1 of 'Dip-Switch A' in OFF position;
- Turn ON the device.

If you know the actual IP address of the device, you have to use this procedure:

- Turn ON the Device with the Ethernet cable inserted;
- Insert the actual IP of the Converter;
- Select which operations you want to do;
- Press the **"Execute update firmware"** button to start the upload;
- When all the operations are "OK" the device automatically goes at Normal Mode.

At this point the configuration/firmware on the device is correctly updated.

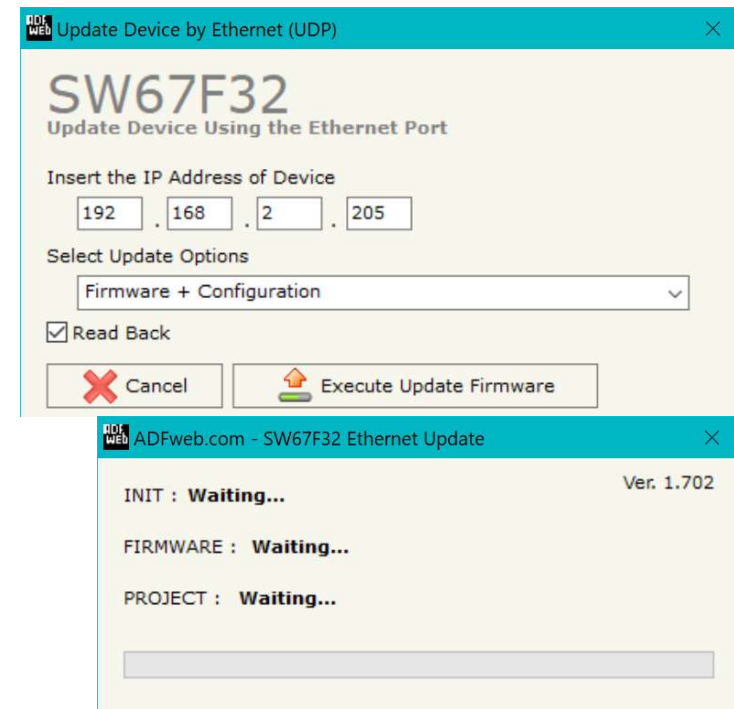


Figure 7: "Update device" windows

**Note:**

When you receive the device, for the first time, you also have to update the Firmware in the HD67F32 device.

**Warning:**

If Fig. 8 appears when you try to do the Update try these points before seeking assistance:

- Try to repeat the operations for the updating;
- Try with another PC;
- Try to restart the PC;
- Check the LAN settings;
- If you are using the program inside a Virtual Machine, try to use in the main Operating System;
- If you are using Windows Seven, Vista, 8, 10 or 11 make sure that you have the administrator privileges;
- In case you have to program more than one device, using the "UDP Update", you have to cancel the ARP table every time you connect a new device on Ethernet. For do this you have to launch the "Command Prompt" and write the command "arp - d". Pay attention that with Windows Vista, Seven, 8, 10 or 11 you have to launch the "Command Prompt" with Administrator Rights;
- Pay attention at Firewall lock.

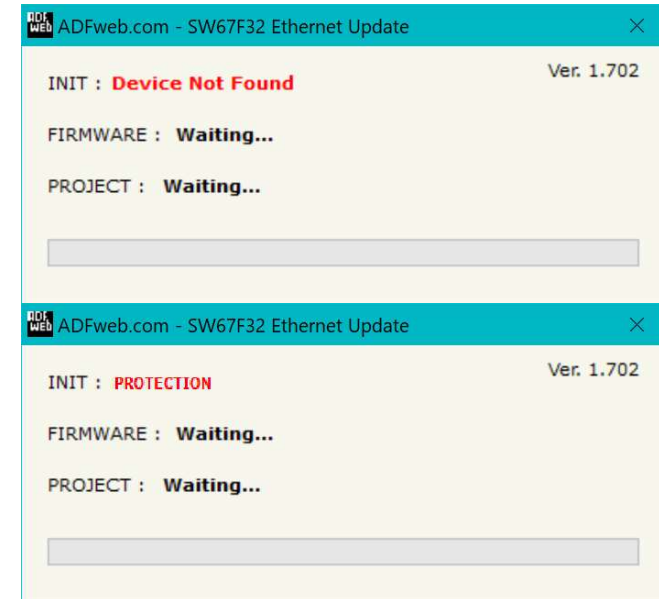
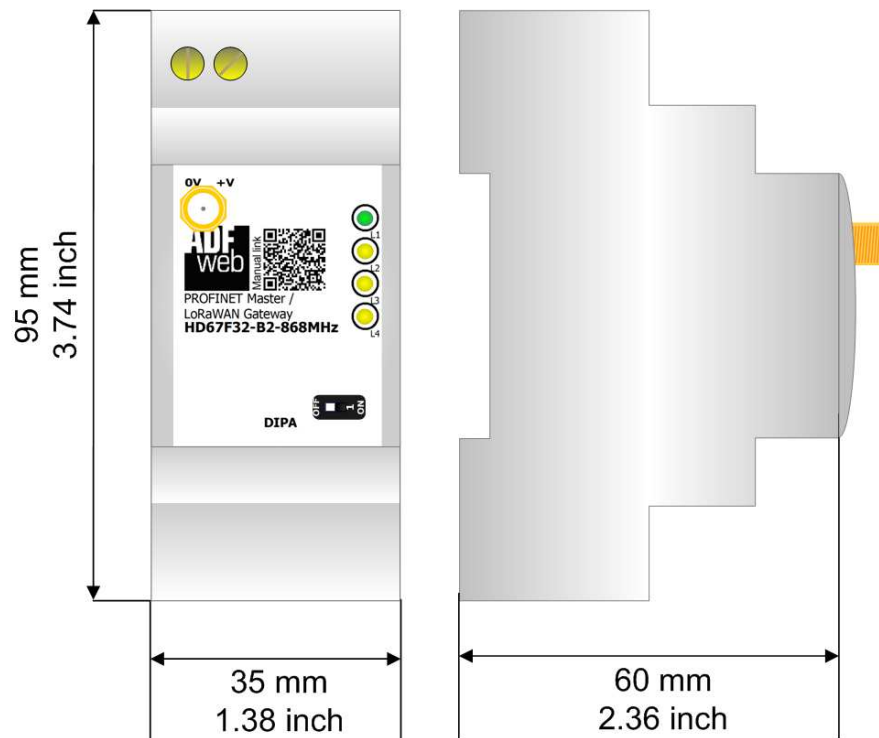


Figure 8: "Error" window

**Warning:**

In the case of HD67F32 you have to use the software "SW67F32": [www.adfweb.com/download/filefold/SW67F32.zip](http://www.adfweb.com/download/filefold/SW67F32.zip).

## MECHANICAL DIMENSIONS:



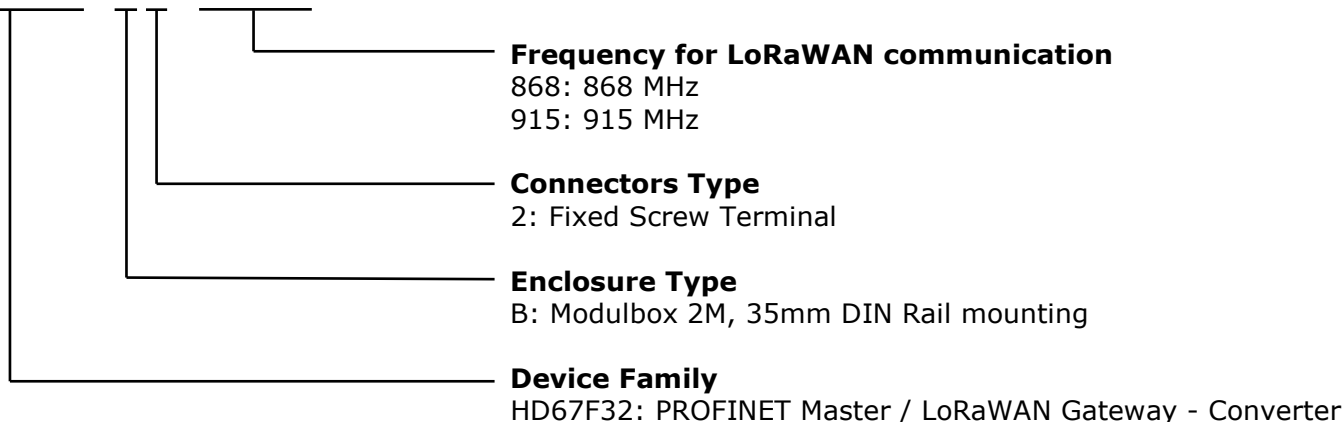
Housing: PVC  
Weight: 200g  
(Approx)

Figure 9: Mechanical dimensions scheme for HD67F32-B2-xxxMHz

## ORDERING INFORMATION:

The ordering part number is formed by a valid combination of the following:

### **HD67F32 - B 2 - xxxMHz**



Order Code: **HD67F32-B2-868MHz** - PROFINET Master / LoRaWAN Gateway – Converter (868MHz)

Order Code: **HD67F32-B2-915MHz** - PROFINET Master / LoRaWAN Gateway – Converter (915MHz)

## ACCESSORIES:

Order Code: **AC34011** - 35mm Rail DIN - Power Supply 220/240V AC 50/60Hz – 12 V DC

Order Code: **AC34012** - 35mm Rail DIN - Power Supply 220/240V AC 50/60Hz – 24 V DC

**DISCLAIMER:**

All technical content within this document can be modified without notice. The content of the document is a under continual renewal. For losses due to fire, earthquake, third party access or other accidents, or intentional or accidental abuse, misuse, or use under abnormal conditions repairs are charged to the user. ADFweb.com S.r.l. will not be liable for accidental loss of use or inability to use this product, such as loss of business income. ADFweb.com S.r.l. shall not be liable for consequences of improper use.

**OTHER REGULATIONS AND STANDARDS:****WEEE INFORMATION**

Disposal of old electrical and electronic equipment (as in the European Union and other European countries with separate collection systems).

— This symbol on the product or on its packaging indicates that this product may not be treated as household rubbish. Instead, it should be taken to an applicable collection point for the recycling of electrical and electronic equipment. If the product is disposed correctly, you will help prevent potential negative environmental factors and impact of human health, which could otherwise be caused by inappropriate disposal. The recycling of materials will help to conserve natural resources. For more information about recycling this product, please contact your local city office, your household waste disposal service or the shop where you purchased the product.

**RESTRICTION OF HAZARDOUS SUBSTANCES DIRECTIVE**

The device respects the 2002/95/EC Directive on the restriction of the use of certain hazardous substances in electrical and electronic equipment (commonly referred to as Restriction of Hazardous Substances Directive or RoHS).

**CE MARKING**

The product conforms with the essential requirements of the applicable EC directives.

## WARRANTIES AND TECHNICAL SUPPORT:

For fast and easy technical support for your ADFweb.com SRL products, consult our internet support at [www.adfweb.com](http://www.adfweb.com). Otherwise contact us at the address [support@adfweb.com](mailto:support@adfweb.com)

## RETURN POLICY:

If while using your product you have any problem and you wish to exchange or repair it, please do the following:

- Obtain a Product Return Number (PRN) from our internet support at [www.adfweb.com](http://www.adfweb.com). Together with the request, you need to provide detailed information about the problem.
- Send the product to the address provided with the PRN, having prepaid the shipping costs (shipment costs billed to us will not be accepted).

If the product is within the warranty of twelve months, it will be repaired or exchanged and returned within three weeks. If the product is no longer under warranty, you will receive a repair estimate.



**ADFweb.com S.r.l.**  
Via Strada Nuova, 17  
IT-31010 Mareno di Piave  
TREVISO (Italy)  
Phone +39.0438.30.91.31  
Fax +39.0438.49.20.99  
[www.adfweb.com](http://www.adfweb.com)

