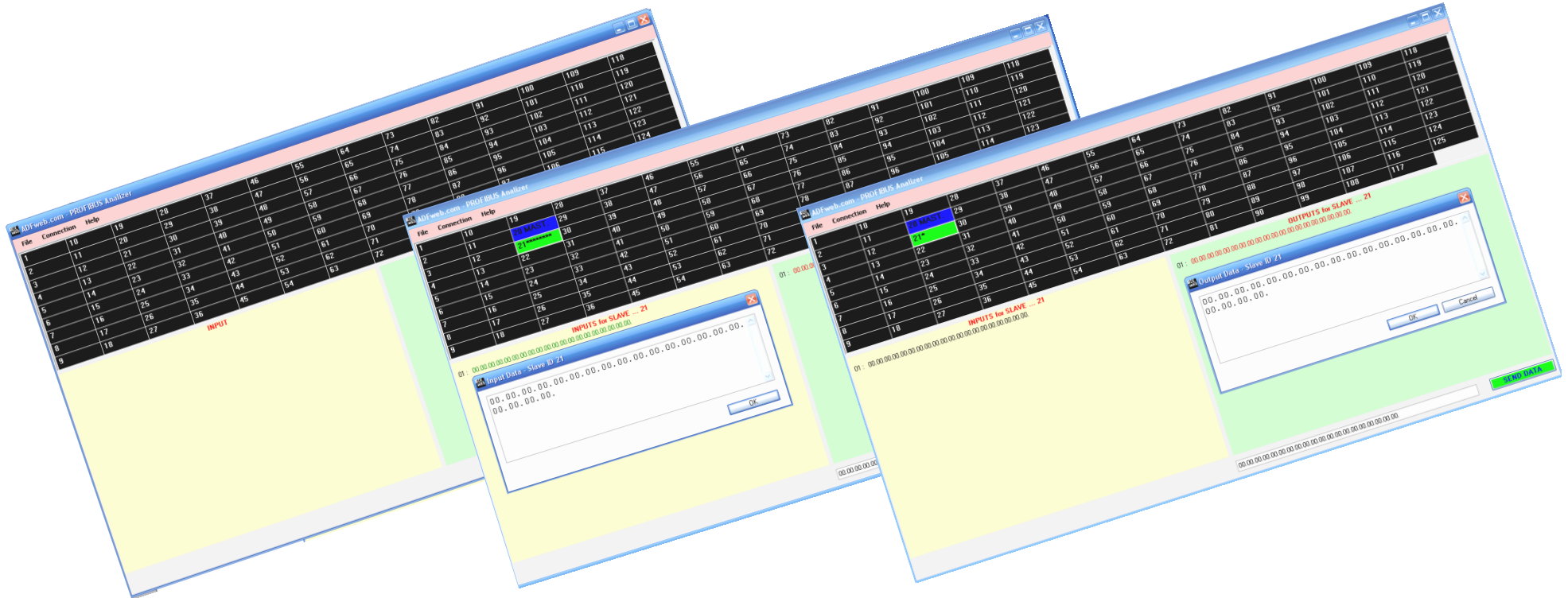


User Manual

Revision 1.000
English

Software PROFIBUS Analyzer

SW67575-Tool



INDEX:

	Page
INDEX	2
UPDATED DOCUMENTATION	2
REVISION LIST	2
WARNING	2
TRADEMARKS	2
SECURITY ALERT	3
THE HARDWARE	4
THE SOFTWARE	4
INSTALLATION	4
USE OF PROFIBUS ANALYZER	4
- MAIN WINDOW	4
- FILE	5
- CONNECTION	5
- HELP	9
DISCLAIMER	10
OTHER REGULATIONS AND STANDARDS	10
WARRANTIES AND TECHNICAL SUPPORT	11
RETURN POLICY	11
PRODUCTS AND RELATED DOCUMENTS	11

UPDATED DOCUMENTATION:

Dear customer, we thank you for your attention and we remind you that you need to check that the following document is:

- Updated
- Related to the product you own

To obtain the most recently updated document, note the "document code" that appears at the top right-hand corner of each page of this document.

With this "Document Code" go to web page www.adfweb.com/download/ and search for the corresponding code on the page. Click on the proper "Document Code" and download the updates.

To obtain the updated documentation for the product that you own, note the "Document Code" (Abbreviated written "Doc. Code" on the label on the product) and download the updated from our web site www.adfweb.com/download/

REVISION LIST:

Revision	Date	Author	Chapter	Description
1.000	15/01/2013	Ff	All	First release version (1.000)

WARNING:

ADFweb.com reserves the right to change information in this manual about our product without warning.
ADFweb.com is not responsible for any error this manual may contain.

TRADEMARKS:

All trademarks mentioned in this document belong to their respective owners.

SECURITY ALERT:**GENERAL INFORMATION**

To ensure safe operation, the device must be operated according to the instructions in the manual. When using the device are required for each individual application, legal and safety regulation. The same applies also when using accessories.

INTENDED USE

Machines and systems must be designed so the faulty conditions do not lead to a dangerous situation for the operator (i.e. independent limit switches, mechanical interlocks, etc.).


QUALIFIED PERSONNEL

The device can be used only by qualified personnel, strictly in accordance with the specifications.

Qualified personnel are persons who are familiar with the installation, assembly, commissioning and operation of this equipment and who have appropriate qualifications for their job.

RESIDUAL RISKS

The device is state of the art and is safe. The instrument can represent a potential hazard if they are inappropriately installed and operated by personnel untrained. These instructions refer to residual risks with the following symbol:

 This symbol indicates that non-observance of the safety instructions is danger for people to serious injury or death and / or the possibility of damage.

CE CONFORMITY

The declaration is made by us. You can send an email to support@adfweb.com or give us a call if you need it.

THE HARDWARE:

The order code for the hardware is HD67575-A1. To obtain the manual of the HD67575-A1 please go to www.adfweb.com/download/filefold/Ethernet_Server_PROFIBUS_Master_MN67575_ENG.pdf.

THE SOFTWARE:

To obtain the software please go to www.adfweb.com/download/filefold/sw67575-tool.zip. (This manual is referenced to the last version of the software present on our web site). The software works with MSWindows (MS 2000, XP, Vista, Seven, 8; 32/64bit).



Note:

It is necessary to have installed .Net Framework 4.

INSTALLATION:

Extract the file downloaded from our web site and follow the procedure to install the software.

USE OF PROFIBUS ANALYZER:

-MAIN WINDOW:

In the main window of the Software (Fig. 1) it is possible seeing the active connections in the PROFIBUS Network and the specific data written/read by the specific device (please, see the section "Connection").

On the toolbar there are 3 fields:

- File
- Connection
- Help

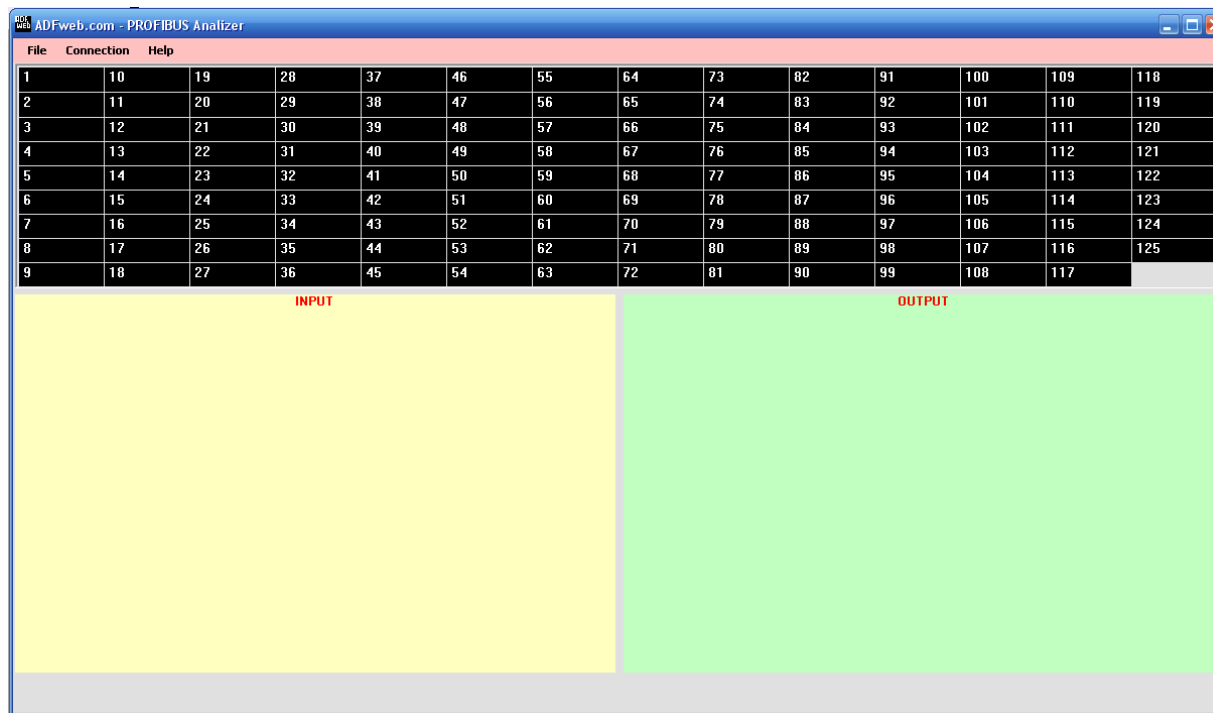


Fig. 1: Main window for "PROFIBUS Analyzer" Software

-FILE:

If you select this field, the "Exit" button appears (Fig. 2).
 With this option it is possible to close the PROFIBUS Analyzer.

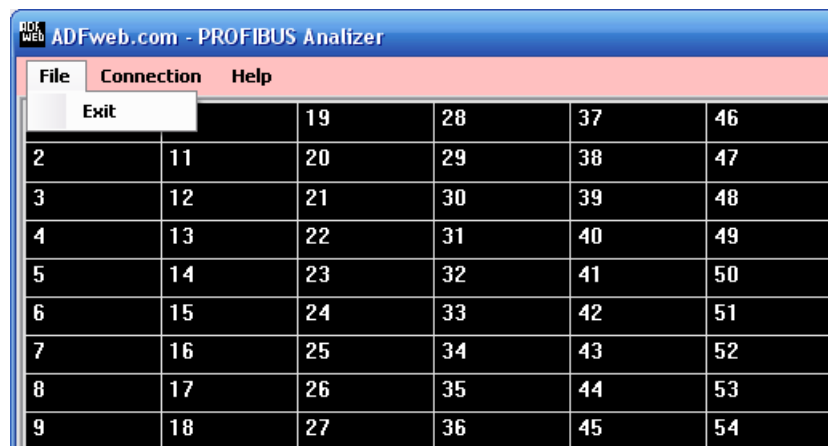


Fig. 2: "FILE" field

-CONNECTION:

If you select this field, 3 options appear (Fig. 3):

- Connection Parameters
- Connect
- Disconnect

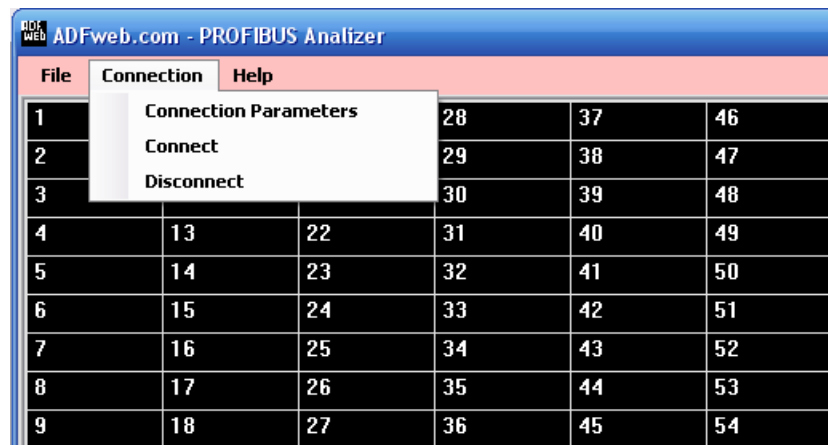


Fig. 3: "Connection" field

By pressing the "**Connection Parameters**" button the "Connection Parameters" windows appears (Fig. 4).

In this section it is possible to set up the connection:

- in the field "**Board IP Address**" it is possible to set IP address of the gateway HD67575-A1 (it will be the same that you have defined in the compositor SW67575, section "Set communication", field "IP address").
- In the field "**Port**" it is possible to set the communication port of the gateway HD67575-A1 (it will be the same that you have defined in the compositor SW67575, section "Set communication", field "Port").

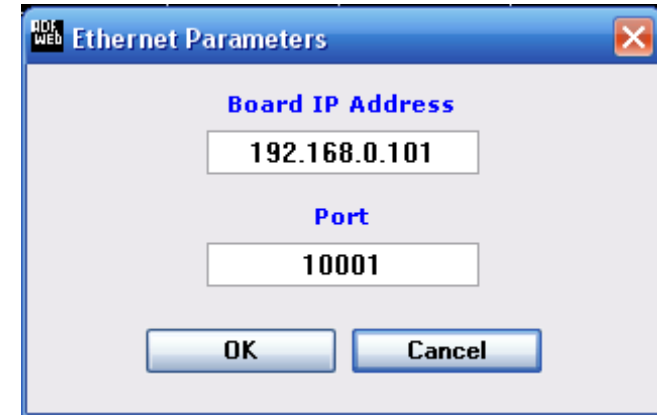


Fig. 4 "Connection Parameters" window

By pressing the "**Connect**" button the communication starts.

In the main window the box with the ID of the Master turns **BLUE** and the boxes with the ID of the slaves are colored in relation of the status of the connection:

- **Orange**: slave simulator.
- **Light Green**: slave connection is OK.
- **Dark Green**: configuration is KO.
- **Yellow**: there is a connection problem.
- **Red**: there is an error.
- **Purple**: there is an unknown problem.
- **Black**: the connection is OFF.

-HELP:

If you select this field, 2 options appears (Fig.8):

- Color Help.
- About.

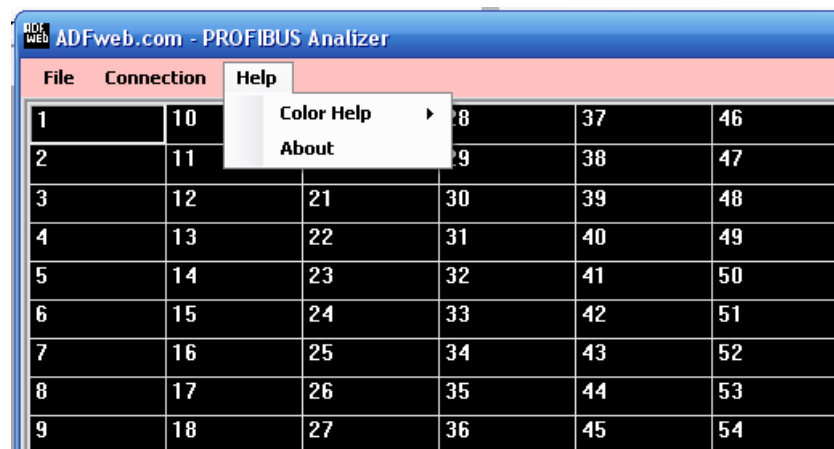


Fig. 8 "Help" option

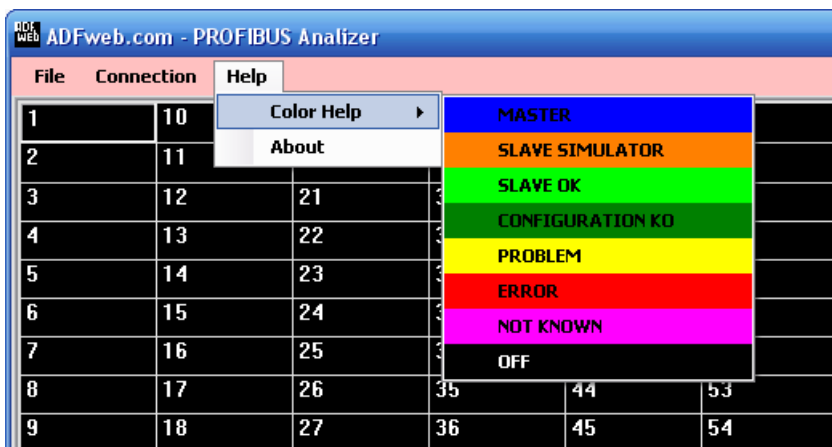


Fig. 9 "Color Help" button

By selecting the "About" button, the "About..." window appears. In this window it is possible to read some information about the software, like the name and the version (Fig. 10).

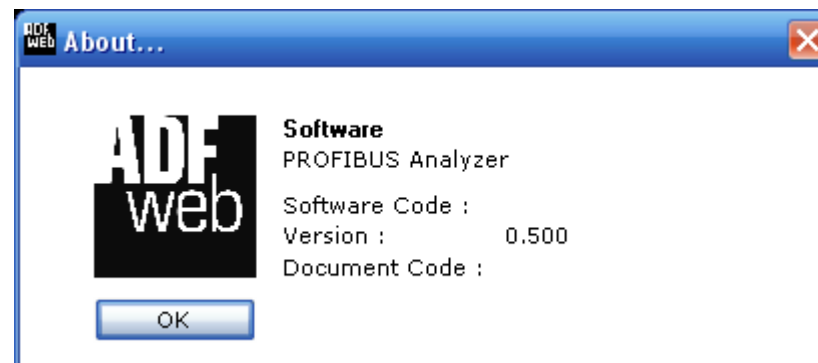


Fig. 10 "About" window

DISCLAIMER

All technical content within this document can be modified without notice. The content of the document content is a recurring audit. For losses due to fire, earthquake, third party access or other accidents, or intentional or accidental abuse, misuse, or use under abnormal conditions repairs are charged to the user. ADFweb.com S.r.l. will not be liable for accidental loss of use or inability to use this product, such as loss of business income. ADFweb.com S.r.l. shall not be liable for consequences of improper use.

OTHER REGULATIONS AND STANDARDS

WEEE INFORMATION



Disposal of old electrical and electronic equipment (as in the European Union and other European countries with separate collection systems).

— This symbol on the product or on its packaging indicates that this product may not be treated as household rubbish. Instead, it should be taken to an applicable collection point for the recycling of electrical and electronic equipment. If the product is disposed correctly, you will help prevent potential negative environmental factors and human health, which could otherwise be caused by inappropriate disposal. The recycling of materials will help to conserve natural resources. For more information about recycling this product, please contact your local city office, your household waste disposal service or the shop where you purchased the product.

RESTRICTION OF HAZARDOUS SUBSTANCES DIRECTIVE



The device respects the 2002/95/EC Directive on the restriction of the use of certain hazardous substances in electrical and electronic equipment (commonly referred to as Restriction of Hazardous Substances Directive or RoHS).

CE MARKING



The product conforms with the essential requirements of the applicable EC directives.

WARRANTIES AND TECHNICAL SUPPORT:

For fast and easy technical support for your ADFweb.com SRL products, consult our internet support at www.adfweb.com. Otherwise contact us at the address support@adfweb.com

RETURN POLICY:

If while using your product you have any problem and you wish to exchange or repair it, please do the following:

- 1) Obtain a Product Return Number (PRN) from our internet support at www.adfweb.com. Together with the request, you need to provide detailed information about the problem.
- 2) Send the product to the address provided with the PRN, having prepaid the shipping costs (shipment costs billed to us will not be accepted).

If the product is within the warranty of twelve months, it will be repaired or exchanged and returned within three weeks. If the product is no longer under warranty, you will receive a repair estimate.

PRODUCTS AND RELATED DOCUMENTS:

Part	Description	URL
HD67031	Analyzer / Scanner / Sniffer M-Bus	www.adfweb.com?product=HD67031
HD67038	Converter Ethernet to RS232/RS485	www.adfweb.com?product=HD67038
HD67119	Converter USB 2.0 to RS485 Isolated	www.adfweb.com?product=HD67119
HD67575-A1	PROFIBUS Master / Ethernet - Converter	www.adfweb.com?product=HD67575
HD67576-A1	PROFIBUS Master / Ethernet - Converter	www.adfweb.com?product=HD67576