

PROTOCOL CONVERTER



Modbus
MODBUS TCP



CANopen

Innovation Lives in ADFweb.com

- 1) Modbus to M-Bus (code order: HD67029M serie)
- 2) Modbus TCP to M-Bus (code order: HD67044-B2 serie)
- 3) CANopen to M-Bus (code order: HD67051-B2 serie)
- 4) PROFIBUS to M-Bus (code order: HD67053-B2 serie)
- 5) Modbus to M-Bus Physical Layer RS232/RS485 (code order: HD67055)
- 6) M-Bus to Modbus (code order: HD67059M)
- 7) DeviceNet to M-Bus (code order: HD67058-B2 serie)
- 8) Modbus to Multi Master M-Bus (code order: HD67063 serie)
- 9) M-Bus to EtherNet/IP (code order: HD67077-B2 serie)



ADFweb.com srl
Strada Nuova, 17
31010 Mareno di Piave
Treviso — ITALY
www.adfweb.com

Tel. +39-0438-30.91.31
Fax +39-0438-49.20.99
Id. Tax IT-0385360262
info@adfweb.com



QR—quick response
(matrix code)

ADFweb.com



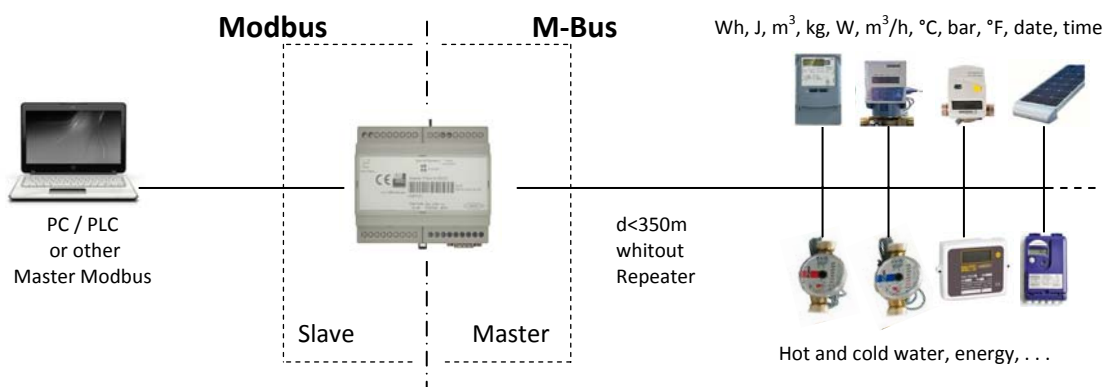
PROTOCOL CONVERTER - M-Bus

- European standard EN 1434
- Microprocessor control
- Scalable from 1 to 250 slaves
- Galvanic isolation between Modbus and M-Bus
- 35mm DIN rail mounting
- Transmission rate settable from 300 to 38400 baud
- AC/DC Supply

Modbus to M-Bus

Code order: HD67029M serie

QR (matrix code info)
Download Modbus/M-Bus



Ask an expert:
info@adfweb.com



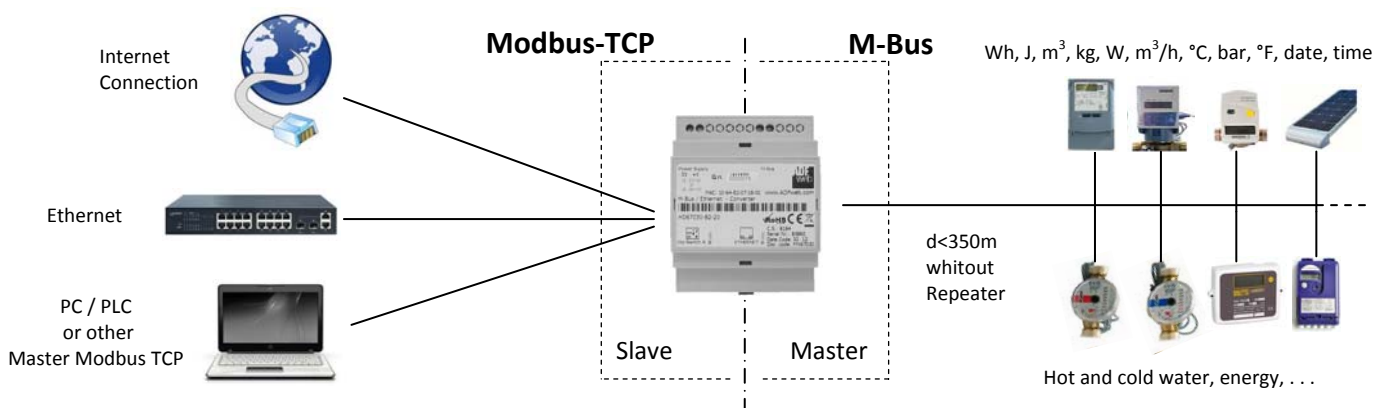
The device connects to M-Bus instruments like hot and cold water counters, energy counters, etc... and allows to save the data on Modbus registers that are read from a Master Modbus (RTU or ASCII) present in the line.
The M-Bus is able to powering from up to 250 slaves.

- European standard EN 1434
- Microprocessor control
- Scalable from 1 to 250 slaves
- Galvanic isolation between Modbus TCP and M-Bus
- 35mm DIN rail mounting
- Transmission rate settable from 300 to 38400 baud
- AC/DC Supply

Modbus TCP to M-Bus

Code order: HD67044-B2 serie

QR (matrix code info)
Download Modbus TCP/M-Bus



Ask an expert:
info@adfweb.com



The device connects to M-Bus instruments like hot and cold water counters, energy counters, etc... and allows to save the data on Modbus registers that are read from a Master Modbus TCP present in the line.
The M-Bus is able to powering from up to 250 slaves.



ADFweb.com srl
Strada Nuova, 17
31010 Mareno di Piave
Treviso — ITALY
www.adfweb.com

Tel. +39-0438-30.91.31
Fax +39-0438-49.20.99
Id. Tax IT-0385360262
info@adfweb.com

QR—quick response
(matrix code)



info M-Bus Protocol Converter

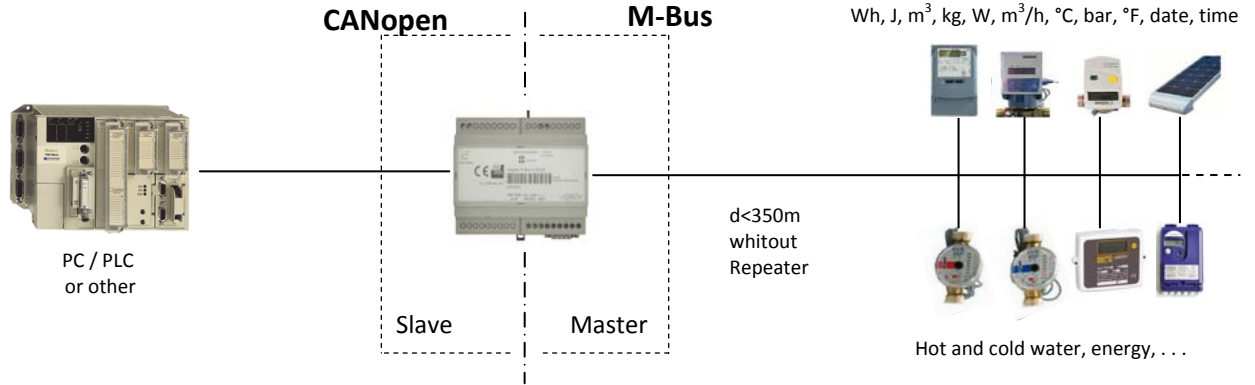
PROTOCOL CONVERTER - M-Bus

- European standard EN 1434
- Microprocessor control
- Scalable from 1 to 250 slaves
- Galvanic isolation between CANopen and M-Bus
- 35mm DIN rail mounting
- Transmission rate settable from 300 to 38400 baud
- AC/DC Supply

CANopen to M-Bus

Code order: HD67051-B2 serie

QR (matrix code info)
Download CANopen/M-Bus



Ask an expert:
info@adfweb.com



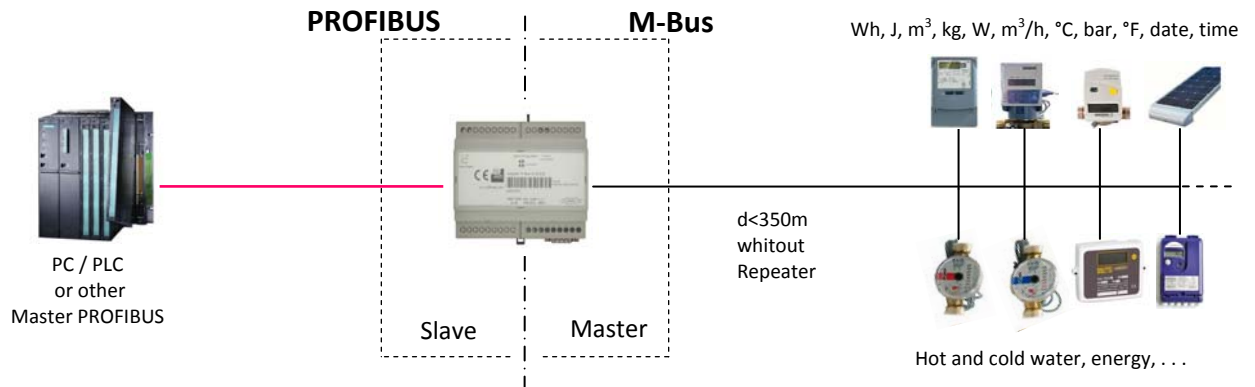
The device connects to M-Bus instruments like hot and cold water counters, energy counters, etc... and allows to save the data on PDO and SDO that are read from a CANopen device present in the line.
The M-Bus is able to powering from up to 250 slaves.

- European standard EN 1434
- Microprocessor control
- Scalable from 1 to 250 slaves
- Galvanic isolation between PROFIBUS and M-Bus
- 35mm DIN rail mounting
- Transmission rate settable from 300 to 38400 baud
- AC/DC Supply

PROFIBUS to M-Bus

Code order: HD67053 serie

QR (matrix code info)
Download PROFIBUS/M-Bus



Ask an expert:
info@adfweb.com



The device connects to M-Bus instruments like hot and cold water counters, energy counters, etc... and allows to save the data on PROFIBUS data array that is read from a Master PROFIBUS present in the line.
The M-Bus is able to powering from up to 250 slaves.



ADFweb.com srl
Strada Nuova, 17
31010 Mareno di Piave
Treviso — ITALY

www.adfweb.com

Tel. +39-0438-30.91.31
Fax +39-0438-49.20.99
Id. Tax IT- 0385360262

info@adfweb.com

QR—quick response
(matrix code)



info M-Bus Protocol Converter

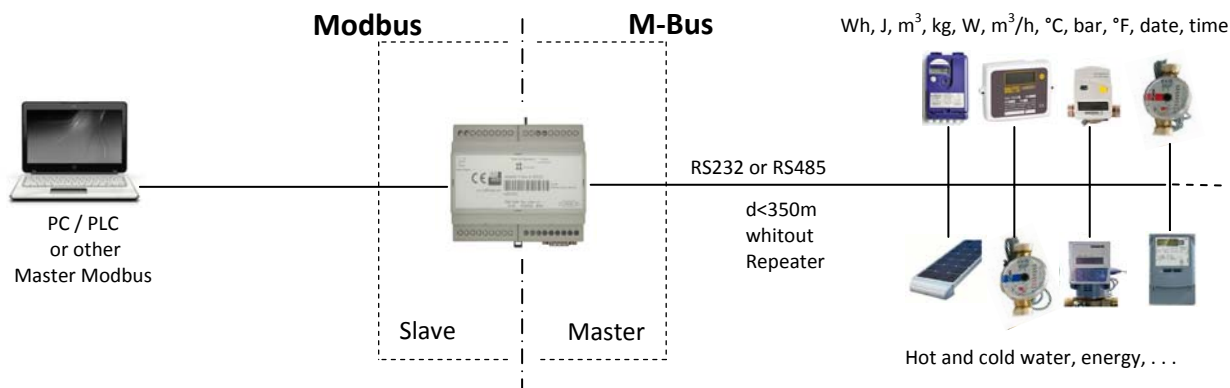
PROTOCOL CONVERTER - M-Bus

- European standard EN 1434
- Microprocessor control
- Galvanic isolation between Modbus and M-Bus
- M-Bus on RS232/RS485 Physical Layer
- 35mm DIN rail mounting
- Transmission rate setttable from 300 to 38400 baud
- AC/DC Supply

Modbus to M-Bus Physical Layer RS232/RS485

Code order: HD67055

QR (matrix code info)
Download Modbus/M-Bus



Ask an expert:
info@adfweb.com



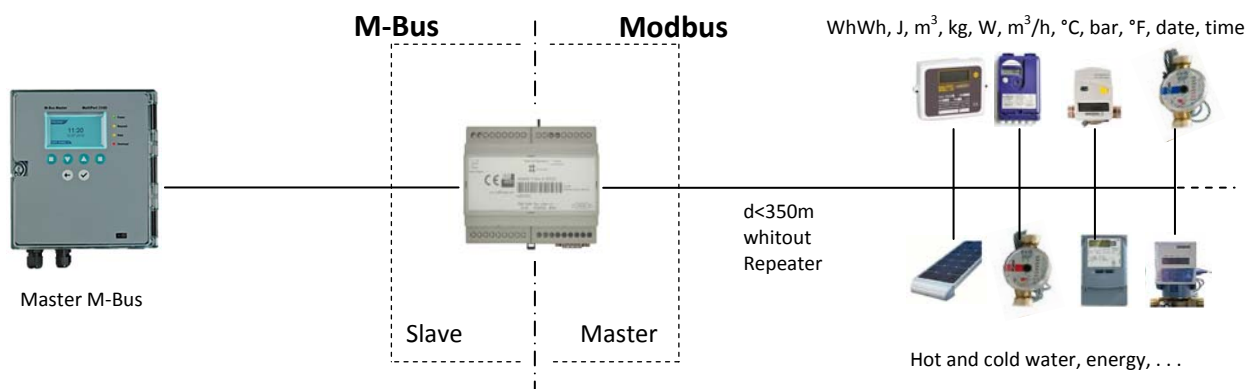
The device connects to M-Bus instruments like hot and cold water counters, energy counters, etc..., that communicate through RS232/RS485 instead of the usual M-Bus Physical Layer, and allows to save the data on Modbus registers that are read from a Master Modbus (RTU or ASCII) present in the line.

- European standard EN 1434
- Microprocessor control
- Galvanic isolation between M-Bus and Modbus
- 35mm DIN rail mounting
- Transmission rate setttable from 300 to 38400 baud
- AC/DC Supply

M-Bus to Modbus

Code order: HD67059M

QR (matrix code info)
Download M-Bus/Modbus



Ask an expert:
info@adfweb.com



The device connects to Modbus instruments like hot and cold water counters, energy counters, etc..., that communicate through RS232/RS485 and allows to save the data that are read from a Master M-Bus present in the line.



ADFweb.com srl
Strada Nuova, 17
31010 Maren di Piave
Treviso — ITALY
www.adfweb.com

Tel. +39-0438-30.91.31
Fax +39-0438-49.20.99
Id. Tax IT-0385360262
info@adfweb.com

QR—quick response
(matrix code)



info M-Bus Protocol Converter

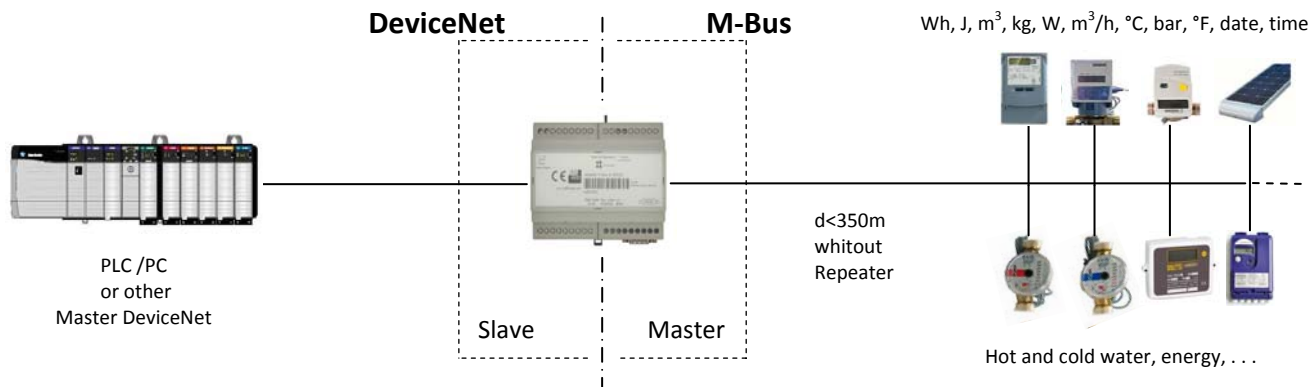
PROTOCOL CONVERTER - M-Bus

- European standard EN 1434
- Microprocessor control
- Scalable from 1 to 250 slaves
- Galvanic isolation between DeviceNet and M-Bus
- 35mm DIN rail mounting
- Transmission rate settable from 300 to 38400 baud
- AC/DC Supply

DeviceNet to M-Bus

Code order: HD67058-B2 serie

QR (matrix code info)
Download DeviceNet/M-Bus



Ask an expert:
info@adfweb.com



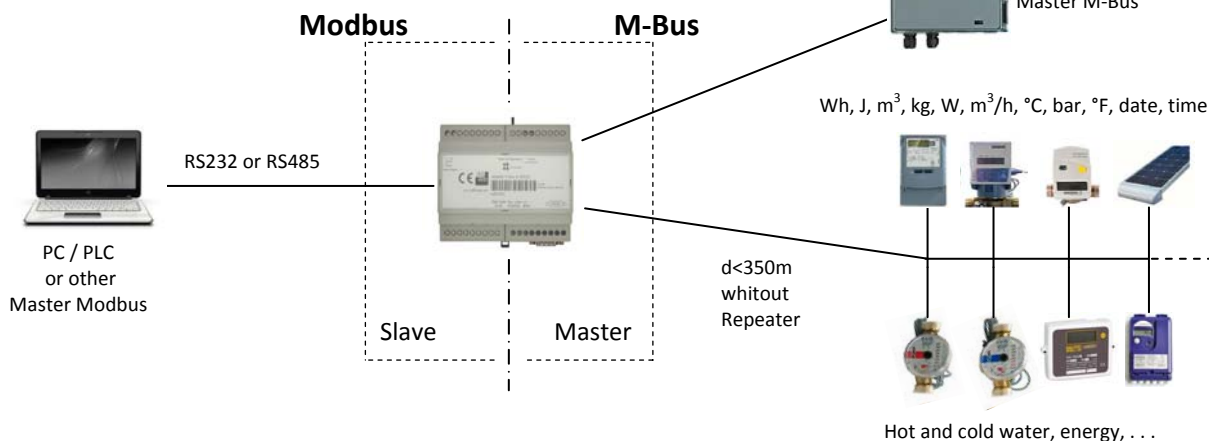
The device connects to M-Bus instruments like hot and cold water counters, energy counters, etc... and allows to save the data on DeviceNet data array that is read from a Master DeviceNet present in the line.
The M-Bus is able to powering from up to 250 slaves.

- European standard EN 1434
- Microprocessor control
- Scalable from 1 to 250 slaves
- Galvanic isolation between Modbus and M-Bus
- Multi-Master M-Bus
- 35mm DIN rail mounting
- Transmission rate settable from 300 to 38400 baud
- AC/DC Supply

Modbus to MultiMaster M-Bus

Code order: HD67063 serie

QR (matrix code info)
Download Modbus/M-Bus



Ask an expert:
info@adfweb.com



The device can be inserted in a M-Bus line with a existing Master M-Bus device; connects to M-Bus instruments like hot and cold water counters, energy counters, etc... and allows to save the data on Modbus registers that are read from a Master Modbus (RTU or ASCII) present in the line.
The M-Bus is able to powering from up to 250 slaves.



ADFweb.com srl
Strada Nuova, 17
31010 Mareno di Piave
Treviso — ITALY
www.adfweb.com

Tel. +39-0438-30.91.31
Fax +39-0438-49.20.99
Id. Tax IT-0385360262
info@adfweb.com

QR—quick response
(matrix code)



info M-Bus Protocol Converter

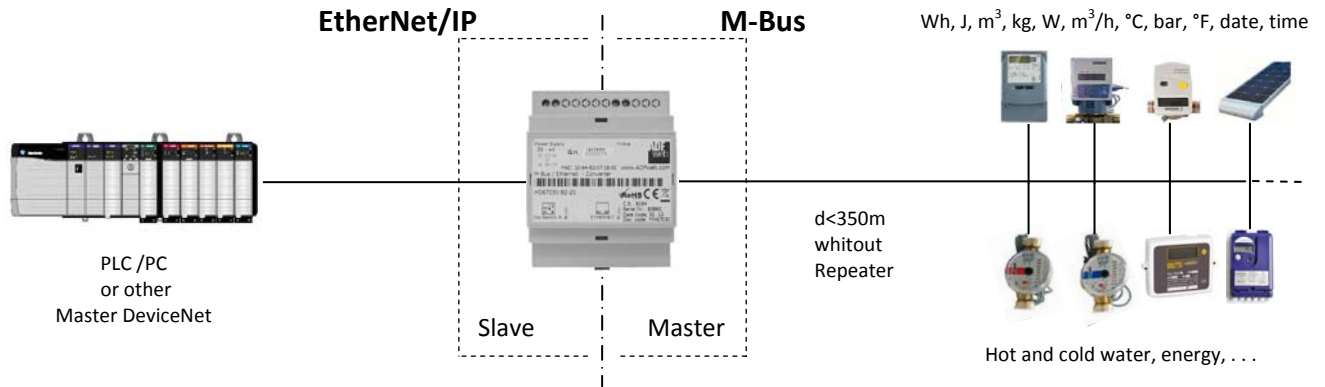
PROTOCOL CONVERTER - M-Bus

- European standard EN 1434
- Microprocessor control
- Scalable from 1 to 250 slaves
- Galvanic isolation between DeviceNet and M-Bus
- 35mm DIN rail mounting
- Transmission rate settable from 300 to 38400 baud
- AC/DC Supply

EtherNet/IP to M-Bus

Code order: HD67077-B2 serie

QR (matrix code info)
Download EtherNet/IP-M-Bus



Ask an expert:
info@adfweb.com



The device connects to M-Bus instruments like hot and cold water counters, energy counters, etc... and allows to save the data on DeviceNet data array that is read from a Master DeviceNet present in the line.
The M-Bus is able to powering from up to 250 slaves.



ADFweb.com srl
Strada Nuova, 17
31010 Mareno di Piave
Treviso — ITALY
www.adfweb.com

Tel. +39-0438-30.91.31
Fax +39-0438-49.20.99
Id. Tax IT-0385360262
info@adfweb.com

QR—quick response
(matrix code)



info M-Bus Protocol Converter