

# User Manual

Revision 1.011  
English

## DeviceNet Slave / PROFIBUS Master - Converter

(Order Code: HD67570-A1)

for Website information:

[www.adfweb.com/?Product=HD67570](http://www.adfweb.com/?Product=HD67570)

for Price information:

[www.adfweb.com/?Price=HD67570-A1](http://www.adfweb.com/?Price=HD67570-A1)

### Benefits and Main Features:

- ▶ Very easy to configure
- ▶ PROFIBUS up to 6Mbps
- ▶ Temperature range: -40°C/85°C (-40°F/185°F)



For others PROFIBUS devices, see also the following links:

#### PROFIBUS Master from/to ...

- [www.adfweb.com?Product=HD67575](http://www.adfweb.com?Product=HD67575)
- [www.adfweb.com?Product=HD67577](http://www.adfweb.com?Product=HD67577)
- [www.adfweb.com?Product=HD67579](http://www.adfweb.com?Product=HD67579)
- [www.adfweb.com?Product=HD67580](http://www.adfweb.com?Product=HD67580)
- [www.adfweb.com?Product=HD67593](http://www.adfweb.com?Product=HD67593)

- (... Ethernet)
- (... CAN)
- (... Modbus TCP Slave)
- (... Modbus Slave)
- (... EtherNet/IP)

#### PROFIBUS Slave from/to ...

- [www.adfweb.com?Product=HD67045](http://www.adfweb.com?Product=HD67045)
- [www.adfweb.com?Product=HD67053](http://www.adfweb.com?Product=HD67053)
- [www.adfweb.com?Product=HD67551](http://www.adfweb.com?Product=HD67551)
- [www.adfweb.com?Product=HD67552](http://www.adfweb.com?Product=HD67552)
- [www.adfweb.com?Product=HD67553](http://www.adfweb.com?Product=HD67553)
- [www.adfweb.com?Product=HD67554](http://www.adfweb.com?Product=HD67554)
- [www.adfweb.com?Product=HD67555](http://www.adfweb.com?Product=HD67555)
- [www.adfweb.com?Product=HD67561](http://www.adfweb.com?Product=HD67561)
- [www.adfweb.com?Product=HD67562](http://www.adfweb.com?Product=HD67562)
- [www.adfweb.com?Product=HD67563](http://www.adfweb.com?Product=HD67563)
- [www.adfweb.com?Product=HD67564](http://www.adfweb.com?Product=HD67564)
- [www.adfweb.com?Product=HD67565](http://www.adfweb.com?Product=HD67565)
- [www.adfweb.com?Product=HD67576](http://www.adfweb.com?Product=HD67576)

- (... Serial)
- (... M-Bus Master)
- (... CANopen)
- (... CAN)
- (... J1939)
- (... DeviceNet Slave)
- (... DeviceNet Master)
- (... Modbus Master)
- (... Modbus Slave)
- (... Ethernet Server)
- (... Modbus TCP Client)
- (... Modbus TCP Server)
- (... Ethernet Client)

Do you have an your customer protocol?

See the following links:

[www.adfweb.com?Product=HD67003](http://www.adfweb.com?Product=HD67003)

**INDEX:**

	Page
INDEX	2
UPDATED DOCUMENTATION	2
REVISION LIST	2
WARNING	2
TRADEMARKS	2
SECURITY ALERT	3
EXAMPLE OF CONNECTION	4
CONNECTION SCHEME	5
CHARACTERISTICS	6
CONFIGURATION	6
POWER SUPPLY	7
FUNCTION MODES	8
LEDS	9
PROFIBUS	10
ETHERNET	10
DEVICENET	11
USE OF COMPOSITOR SW67570	12
NEW PROJECT / OPEN PROJECT	12
SET COMMUNICATION	13
PROFIBUS NETWORK	14
MASTER PROFIBUS OPTIONS	15
PROFIBUS DEVICE	16
- MODULE SELECTION	17
- USER PARAMETERS	19
- MODULE PARAMETERS	21
- CAPABILITIES	22
- OPTIONS	23
DEFINE OFFSET	24
UPDATE DEVICE	25
MECHANICAL DIMENSIONS	27
ORDER CODE	28
ACCESSORIES	28
DISCLAIMER	29
OTHER REGULATIONS AND STANDARDS	29
WARRANTIES AND TECHNICAL SUPPORT	30
RETURN POLICY	30
PRODUCTS AND RELATED DOCUMENTS	30

**UPDATED DOCUMENTATION:**

Dear customer, we thank you for your attention and we remind you that you need to check that the following document is:

- Updated;
- Related to the product you own.

To obtain the most recently updated document, note the “document code” that appears at the top right-hand corner of each page of this document.

With this “Document Code” go to web page [www.adfweb.com/download/](http://www.adfweb.com/download/) and search for the corresponding code on the page. Click on the proper “Document Code” and download the updates.

To obtain the updated documentation for the product that you own, note the “Document Code” (Abbreviated written "Doc. Code" on the label on the product) and download the updated from our web site [www.adfweb.com/download/](http://www.adfweb.com/download/)

**REVISION LIST:**

Revision	Date	Author	Chapter	Description
1.000	10/12/2012	FI	All	First release version
1.010	28/12/2012	FI	All	Software changed (v1.000)
1.011	11/01/2013	Nt	All	Added new chapters

**WARNING:**

ADFweb.com reserves the right to change information in this manual about our product without warning.  
ADFweb.com is not responsible for any error this manual may contain.

**TRADEMARKS:**

All trademarks mentioned in this document belong to their respective owners.

**SECURITY ALERT:****GENERAL INFORMATION**

To ensure safe operation, the device must be operated according to the instructions in the manual. When using the device are required for each individual application, legal and safety regulation. The same applies also when using accessories.

**INTENDED USE**

Machines and systems must be designed so the faulty conditions do not lead to a dangerous situation for the operator (i.e. independent limit switches, mechanical interlocks, etc.).


**QUALIFIED PERSONNEL**

The device can be used only by qualified personnel, strictly in accordance with the specifications.

Qualified personnel are persons who are familiar with the installation, assembly, commissioning and operation of this equipment and who have appropriate qualifications for their job.

**RESIDUAL RISKS**

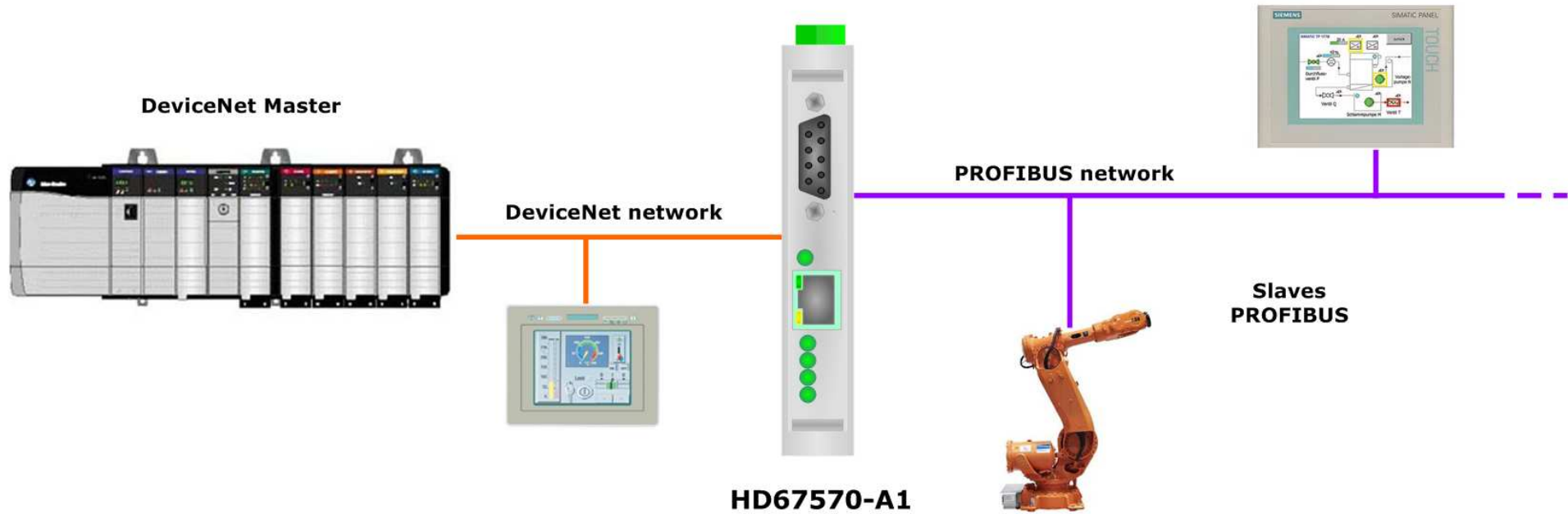
The device is state of the art and is safe. The instrument can represent a potential hazard if they are inappropriately installed and operated by personnel untrained. These instructions refer to residual risks with the following symbol:

 This symbol indicates that non-observance of the safety instructions is danger for people to serious injury or death and / or the possibility of damage.

**CE CONFORMITY**

The declaration is made by us. You can send an email to [support@adfweb.com](mailto:support@adfweb.com) or give us a call if you need it.

**EXAMPLE OF CONNECTION:**



**CONNECTION SCHEME:**

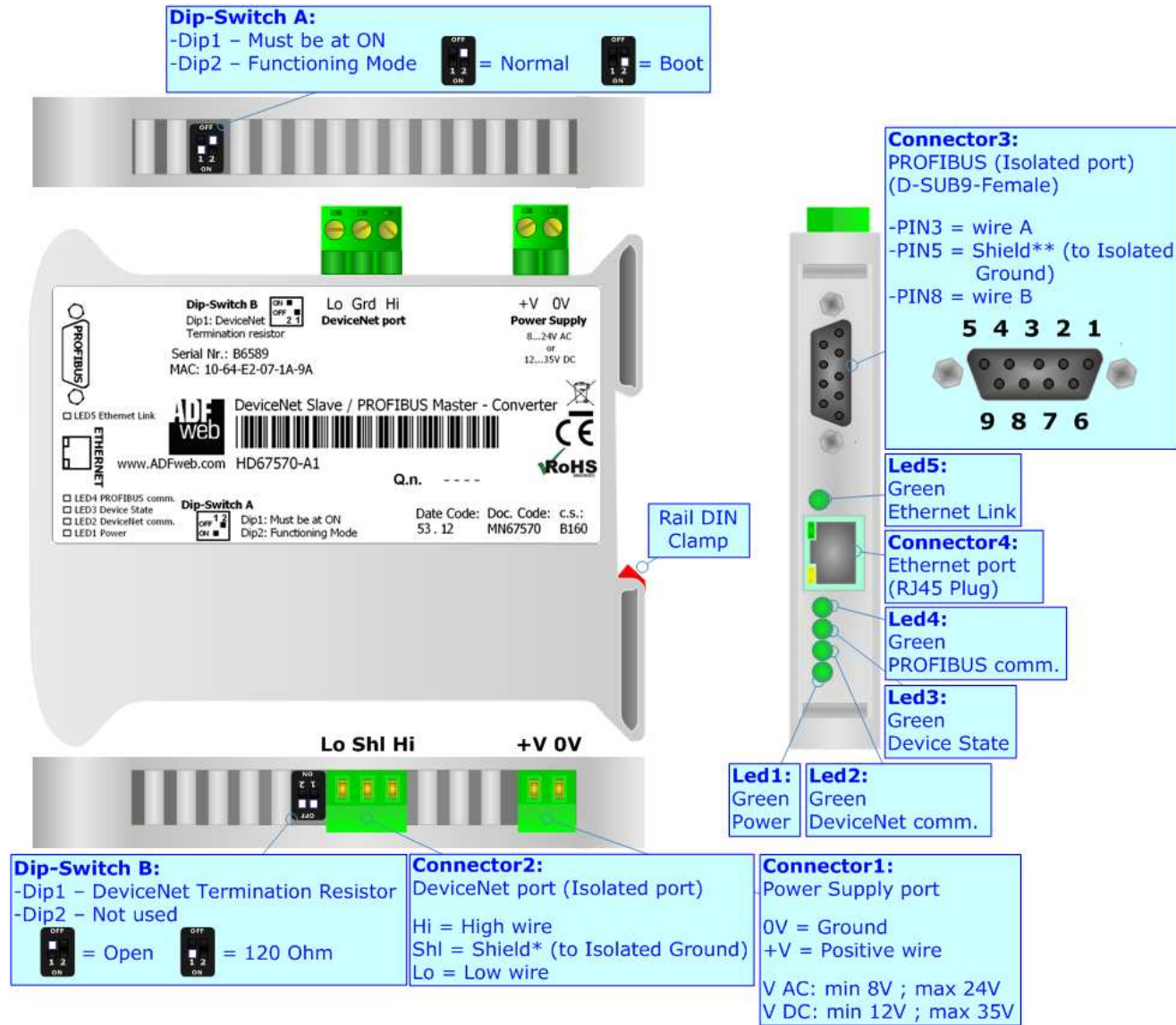


Figure 1: Connection scheme for HD67570-A1

**CHARACTERISTICS:**

The configurable "DeviceNet Slave / PROFIBUS Master - Converter" allows the following characteristics:

- Up to 455 byte IN and 455 byte OUT at DeviceNet side;
- Triple isolation between DeviceNet - Power Supply, DeviceNet - PROFIBUS, Power Supply - PROFIBUS.
- Two-directional information between DeviceNet and PROFIBUS;
- Mountable on 35mm Rail DIN;
- Wide power supply input range: 8...24V AC or 12...35V DC;
- Wide temperature range: -40°C / 85°C [-40°F / +185°F].



**CONFIGURATION:**

You need Compositor SW67570 software on your PC in order to perform the following:

- Define the parameter of the PROFIBUS;
- Define the parameter of the DeviceNet;
- Define the PROFIBUS network;
- Define which PROFIBUS/DeviceNet data pass to DeviceNet/PROFIBUS network;
- Update the device.

**POWER SUPPLY:**

The devices can be powered at 8...24V AC and 12...35V DC. For more details see the two tables below.

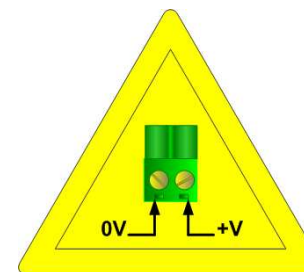
VAC 		VDC 	
Vmin	Vmax	Vmin	Vmax
8V	24V	12V	35V

Consumption at 24V DC:

Device	Consumption [W/VA]
HD67570-A1	3.5

**Caution: Not reverse the polarity power**

**Connector1:**  
 Power Supply port  
 0V = Ground  
 +V = Positive wire  
 V AC: min 8V ; max 24V  
 V DC: min 12V ; max 35V



HD67570-A1

**FUNCTION MODES:**


The device has got two functions mode depending of the position of the 'Dip2 of Dip-Switch A':

- The first, with 'Dip2 of Dip-Switch A' at "OFF" position, is used for the normal working of the device.
- The second, with 'Dip2 of Dip-Switch A' at "ON" position, is used for upload the Project and/or Firmware.

For the operations to follow for the updating, see 'UPDATE DEVICE' section.

According to the functioning mode, the LEDs will have specifics functions, see 'LEDS' section.



 **Warning:**  
 Dip1 of 'Dip-Switch A' must be at ON position for working even if the Ethernet cable isn't inserted.

For the operations to follow for the updating (see 'UPDATE DEVICE' section).

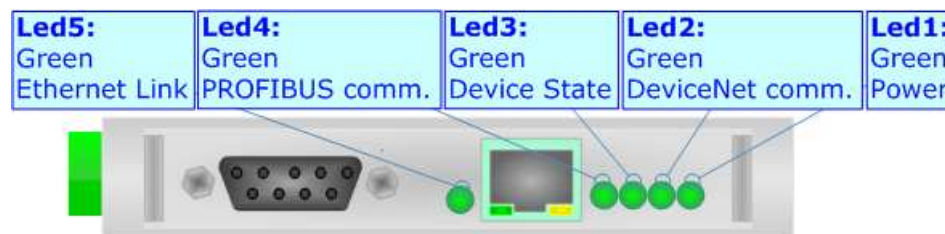
According to the functioning mode, the LEDs will have specifics functions (see 'LEDS' section).



**LEDS:**

The device has got five LEDs that are used to give information of the functioning status.  
The various meanings of the LEDs are described in the table below.

LED	Normal Mode	Boot Mode
1: Power (green)	<b>On:</b> Power supply inserted <b>Off:</b> Power supply not inserted	<b>On:</b> Power supply inserted <b>Off:</b> Power supply not inserted
2: DeviceNet comm. (green)	Blinks quickly when there is DeviceNet data exchange	<b>Blinks quickly:</b> Boot state <b>Blinks very slowly (~0.5Hz):</b> update in progress
3: Device State (green)	Blinks slowly (~1Hz)	<b>Blinks quickly:</b> Boot state <b>Blinks very slowly (~0.5Hz):</b> update in progress
4: PROFIBUS comm. (green)	Blinks quickly when there is PROFIBUS communication	<b>Blinks quickly:</b> Boot state <b>Blinks very slowly (~0.5Hz):</b> update in progress
5: Ethernet Link	<b>On:</b> Ethernet cable inserted <b>Off:</b> Ethernet cable not inserted	<b>On:</b> Ethernet cable inserted <b>Off:</b> Ethernet cable not inserted

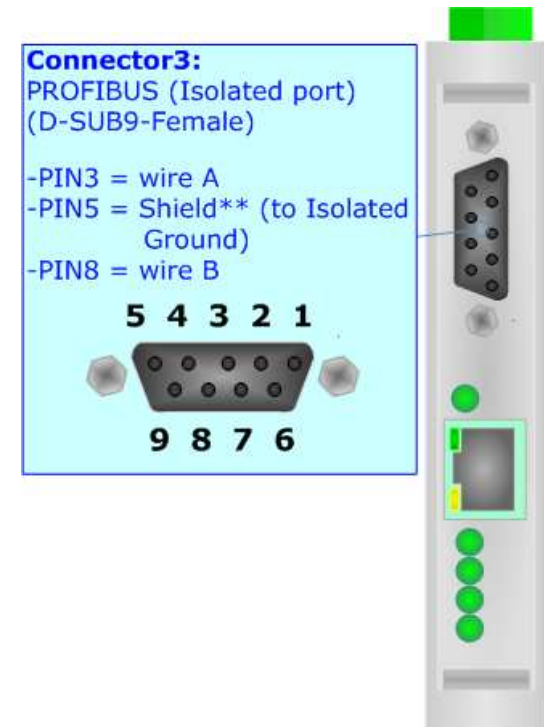


**PROFIBUS:**

The PROFIBUS uses a 9-pin D-SUB connector. The pin assignment is defined like in the right figure.

Here some codes of cables:

- Belden: p/n 183079A - Continuous Armor DataBus® ISA/SP-50 PROFIBUS Cable.



**ETHERNET:**

The Ethernet connection must be made using Connector4 of HD67570-A1 with at least a Category 5E cable. The maximum length of the cable should not exceed 100m. The cable has to conform to the T568 norms relative to connections in cat.5 up to 100 Mbps. To connect the device to an Hub/Switch is recommended the use of a straight cable, to connect the device to a PC is recommended the use of a cross cable.



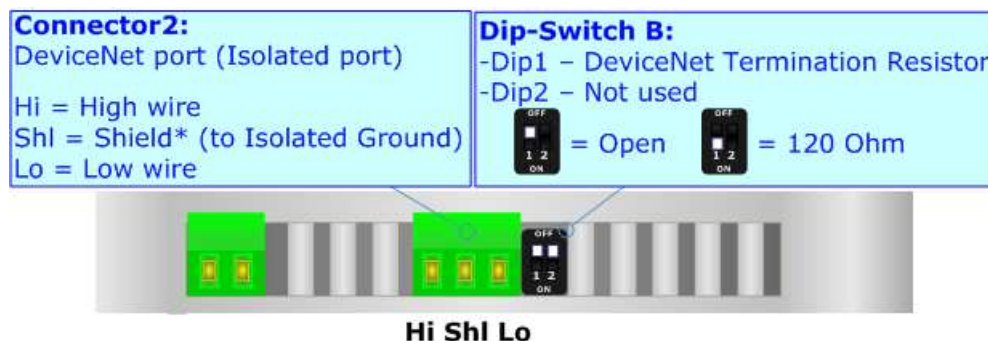
Note:  
 This port is used only for programming the device.

**DEVICENET:**

The termination of DeviceNet line, with a 120Ω resistor, in the HD67570-A1 is made by acting Dip1 of Dip-Switch B.

Cable characteristics:

<b>DC parameter:</b>	Impedance	70 Ohm/m
<b>AC parameters:</b>	Impedance	120 Ohm/m
	Delay	5 ns/m
<b>Length</b>	<b>Baud Rate [bps]</b>	<b>Length MAX [m]</b>
	125 K	500
	250 K	250
	500 K	100



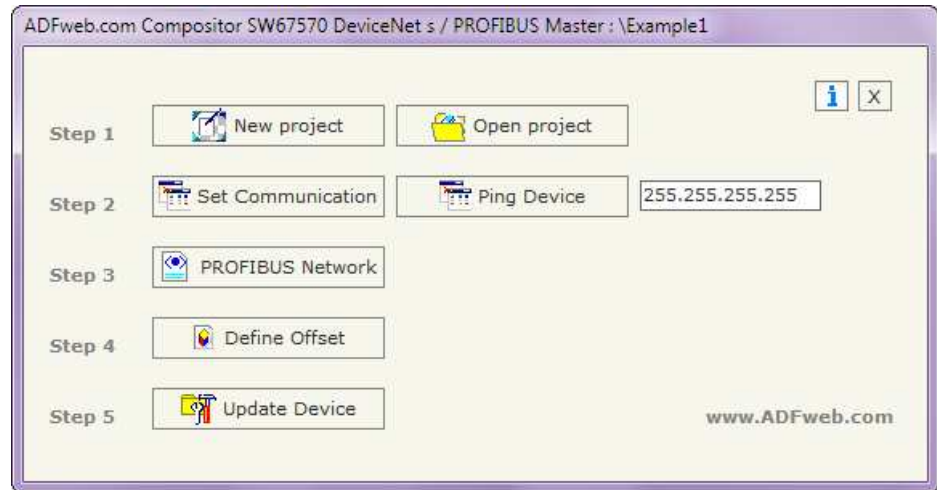
**USE OF COMPOSITOR SW67570:**

To configure the Converter, use the available software that runs with Windows, called SW67570. It is downloadable on the site [www.adfweb.com](http://www.adfweb.com) and its operation is described in this document. (This manual is referenced to the last version of the software present on our web site). The software works with MSWindows (MS 2000, XP, Vista, Seven, 8; 32/64bit).

When launching the SW67570 the right window appears (Fig. 2).

**Note:**  
It is necessary to have installed .Net Framework 4.

Figure 2: Main window for SW67570



**NEW PROJECT / OPEN PROJECT:**

The **“New Project”** button creates the folder which contains the entire device configuration.



A device configuration can also be imported or exported:

- To clone the configurations of a programmable “DeviceNet Slave / PROFIBUS Master - Converter” in order to configure another device in the same manner, it is necessary to maintain the folder and all its contents;
- To clone a project in order to obtain a different version of the project, it is sufficient to duplicate the project folder with another name and open the new folder with the button **“Open Project”**.

## SET COMMUNICATION:

This section defines the fundamental communication parameter of two buses, PROFIBUS and DeviceNet.

By pressing the **“Set Communication”** button from the main window for SW67570 (Fig. 2) the window **“Set Communication”** appears (Fig. 3).

The window is divided in two sections, one for the PROFIBUS and the other for the DeviceNet.

The means of the fields for **“PROFIBUS”** are:

- In the field **“ID Dev.”** the address of the PROFIBUS side is defined;
- In the field **“Baud rate”** the baud rate for the PROFIBUS side is defined;

The means of the fields for **“DeviceNet”** are:

- In the **“ID Dev.”** field the Gateway address of the DeviceNet is defined.
- In the **“Baud rate”** field the DeviceNet baud rate is defined;
- In the field **“Number Byte IN”** the number of byte from the DeviceNet to the gateway is defined (at maximum it is possible to use 455 byte);
- In the field **“Number Byte OUT”** the number of byte from the gateway to the DeviceNet is defined (at maximum it is possible to use 455 byte).

The means of the fields for **“Ethernet (Program Port)”** are:

- In the **“IP ADDRESS”** field insert the IP Address that you want to assign to the device;
- In the **“SUBNET Mask”** field insert the Subnet Mask of the network where the device is put.

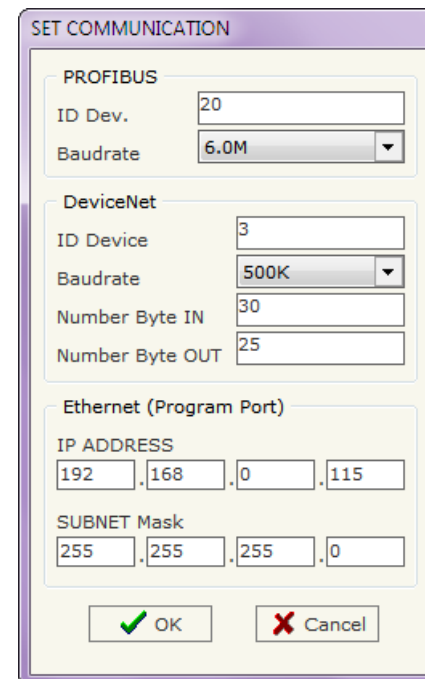


Figure 3: **“Set Communication”** window

**PROFIBUS NETWORK:**

By pressing the **PROFIBUS Network** button from the main window for SW67570 (Fig. 2) the window "PROFIBUS Network" (Fig. 4) appears.

In this window is possible to:

- Modify the PROFIBUS Master Options ("**Master PROFIBUS Options**");
- Add a PROFIBUS Slave in the Network ("**Add Slave PROFIBUS**");
- Modify a PROFIBUS Slave in the Network ("**Modify Slave PROFIBUS**");
- Remove a PROFIBUS Slave from the Network ("**Remove Slave PROFIBUS**").

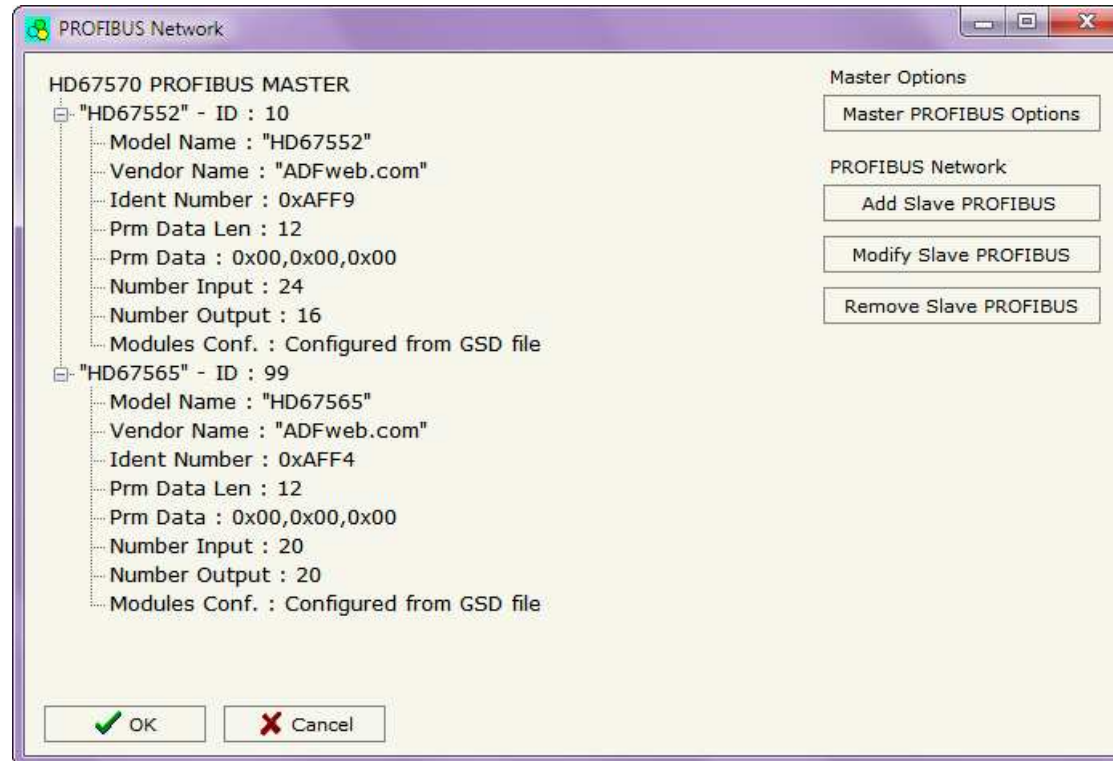


Figure 4: "PROFIBUS Network" window

**MASTER PROFIBUS OPTIONS:**

By pressing the "**Master PROFIBUS Options**" button from the "PROFIBUS Network" window (Fig. 4) the "PROFIBUS Master Options" window appears (Fig. 5).

In this window is possible to set the WatchDog Time for the PROFIBUS Slaves.



Figure 5: "PROFIBUS Master Options" window

**Note:**

Fact1 and Fact2 could be write in decimal o hexadecimal (with prefix "0x" or "\$") and the values must between 1 and 255

**Warning:**

The WatchDog time must be between 200 and 650250 milliseconds.

**PROFIBUS DEVICE:**

By pressing the "Add Slave PROFIBUS" and "Modify Slave PROFIBUS" button (or double click above an existent PROFIBUS Slave) from the "PROFIBUS Network" window (Fig. 4) the "PROFIBUS Device" window appears (Fig. 6).

In this window is possible to:

- Set the PROFIBUS Slave ID ("ID Slave PROFIBUS");
- Select the Modules present in the PROFIBUS Slave from the Available Modules in GSD file ("Module Selection");
- Modify the User Parameters (if present) of the PROFIBUS device ("User Parameters");
- Modify the Parameters (if present) of the Module Selected ("Module Parameters");
- Watch Features and Baudrate supported from the PROFIBUS device ("Capabilities");
- Select the Sync, Freeze and Reset of Data Options ("Options").

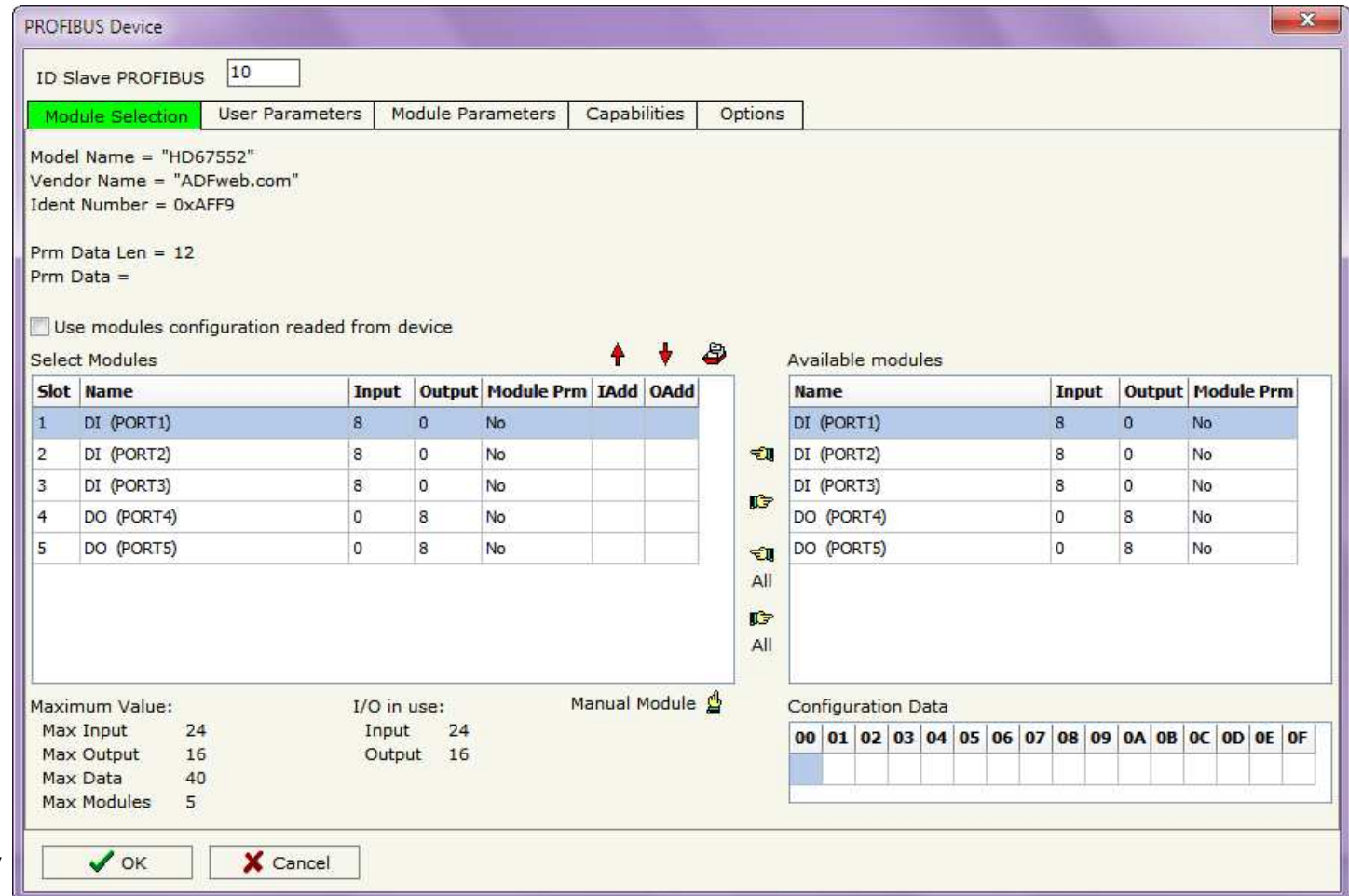


Figure 6: "PROFIBUS Device" window



**MODULE SELECTION:**

The section "Module Selection" is used to select which Modules are present in the Slave (Fig. 7).

In this section is possible to:

- Check the list of the Modules selected ("Select Modules") (Fig. 7, point (1)) and the list of Modules Available in GSD file ("Available Modules") (Fig. 7, point (7));
- Add a Module from the list of GSD file (Fig. 7, point (6));
- Remove a Module from selected list (Fig. 7, point (5));
- Add all Modules present in the GSD file (Fig. 7, point (4));
- Remove all Modules from selected list (Fig. 7, point (3));
- Insert a Module not present in the GSD file ("**Manual Module**") (Fig. 7 point (2)). For more info see the section "Manual Module" below;
- Enable the read of configuration directly from the PROFIBUS Slave ("**Use module configuration readed from device**") (Fig 7, point (8)). If this option is enable the configuration of the modules is discorced and the device read the correct configuration directly to the PROFIBUS slave.

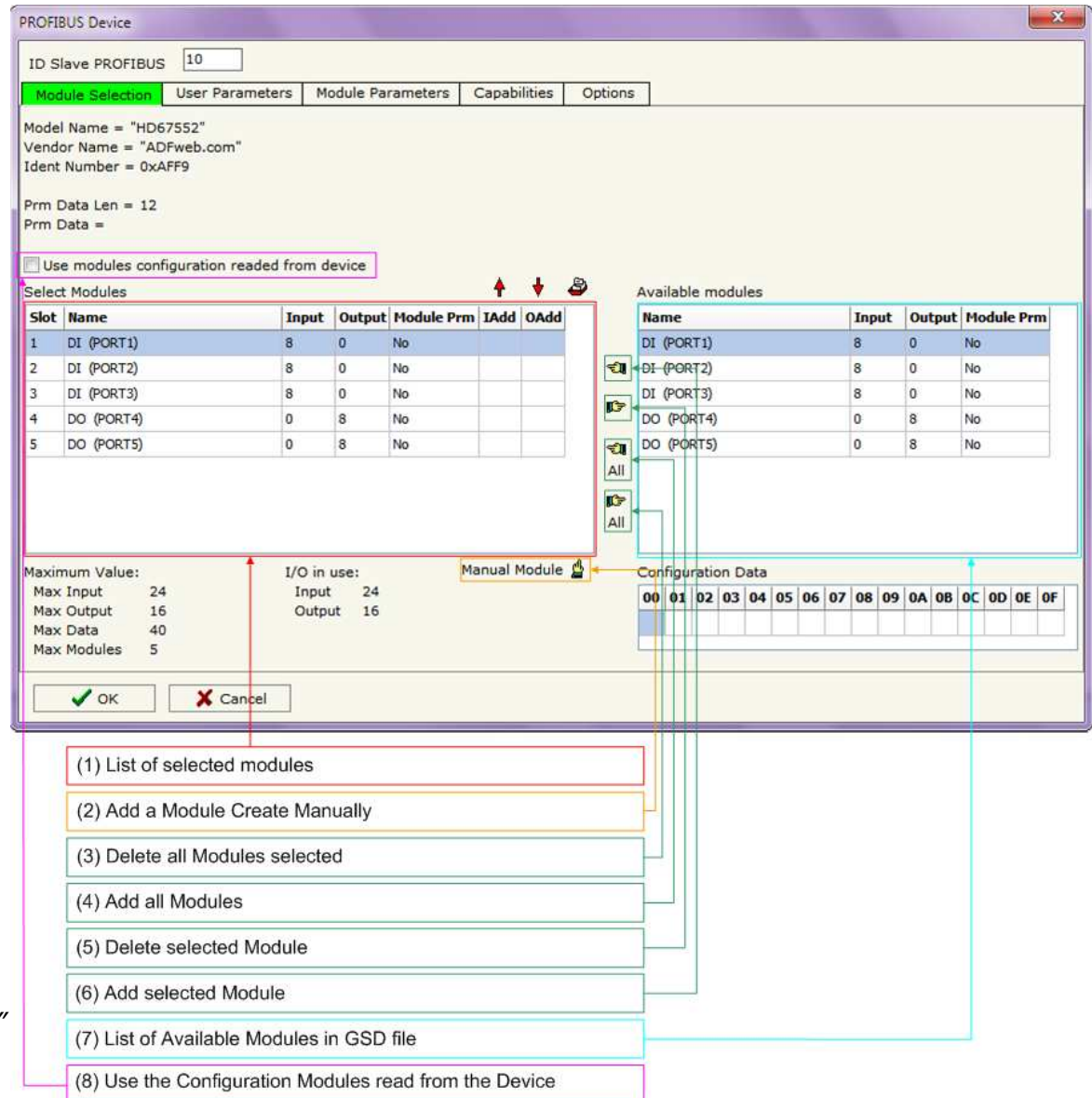


Figure 7: "PROFIBUS Device – Module Selection" window

By pressing the **Manual Module** button from the "PROFIBUS Device" window (Fig. 6) the "Add Module Manually" window appears (Fig. 8).

In this window is possible to add a Module manually, i.e. writing the configuration of the module (in hexadecimal).

The means of the fields are:

- In the field **Description of Module** a name of the Module is defined;
- In the field **Insert the Configuration of Module (HEX)** the configuration of the module is defined. The configuration must be write in hexadecimal mode (without prefix "0x" o "\$").

To modify a Module inserted manually, is necessary to do a double click on the module to change in the "Select Module" list (Fig. 7, point (1)). It is possible to change only the module inserted manually.



**Note:**

The Values inserted in the table must between 00 and FF

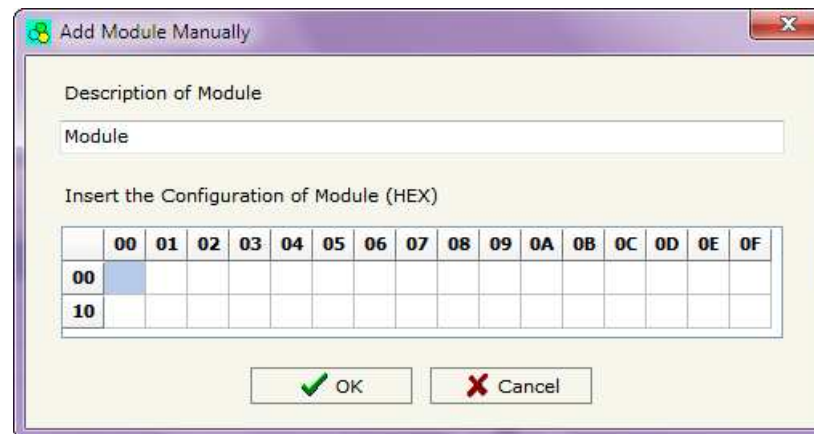


Figure 8: "Add/Modify Module Manually" window

**USER PARAMETERS:**

The section "User Parameters" is used to modify the parameters of the PROFIBUS slave (Fig. 9).

In this section there are:

- The List of all Parameters available for the PROFIBUS device ("User Parameters") (Fig. 9, point (1));
- The Configuration of all parameters in RAW ("Parameters in RAW (Hex)") (Fig. 9, point(2));
- The "Use Parameter Inserted Manually", enable this option is possible to insert manually the parameters of Device and also of the Modules. Using the "Modify User Parameters Manually" button is possible to insert/modify the parametrization of the device (and/or modules). For more info see below. (Fig. 9, point(3));
- The admitted value for the selected parameter. It is possible to select the value desired and confirm it with the "Apply" button. If no value appears in this table, the "Min Value" and "Max Value" are the limit of the parameter. (Fig. 9, point(4));
- The "Apply" button is used to confirm the new value of the parameter, the "Default" button is used to load the factory value for the parameter. In "New Value" edit box it is possible to set the new value. (Fig. 9, point(5)).

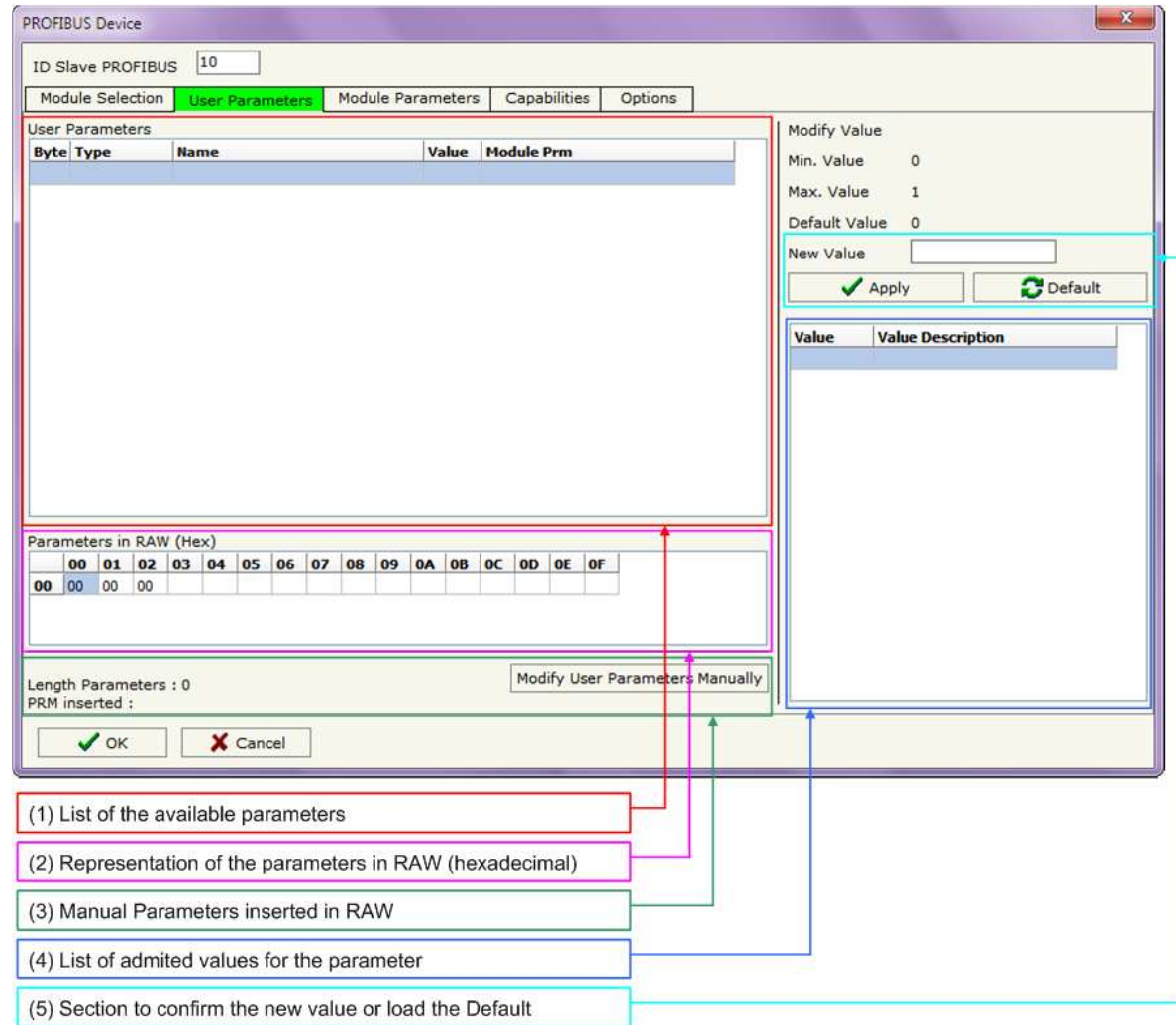


Figure 9: "PROFIBUS Device – User Parameters" window

By pressing the **“Modify User Parameters Manually”** button from the “PROFIBUS Device” window (Fig. 6) the “Add Module Manually” window appears (Fig. 10).

In this window is possible to add/modify the User and/or Modules Parameters manually, i.e. writing the configuration of the parameters (in hexadecimal).

The means of the fields are:

- In the field **“Insert the number of User Parameter”** the number of byte for the parameter have to be inserted;
- In the field **“Insert the Configuration of Module (HEX)”** the configuration of the User and/or Modules Parameters is defined. The configuration must be write in hexadecimal mode (without prefix “0x” o “\$”).



**Note:**

The Values inserted in the table must between 00 and FF

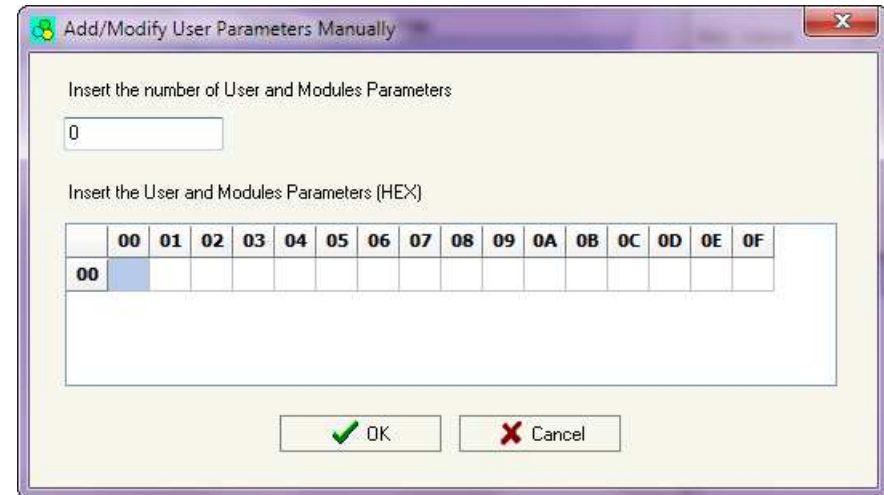


Figure 10: “Add/Modify User Parameters Manually” window

**MODULE PARAMETERS:**

The section "Module Parameters" is used to modify the parameters of the Modules (Fig. 11).

In this section there are:

- The List of all Module selected in the GSD file ("Available modules") (Fig. 11, point (1));
- The List of all Parameters available for the Module selected ("Parameters of module") (Fig. 11, point (2));
- The Configuration of all parameters in RAW for the Module selected ("Parameters in RAW (Hex)") (Fig. 11, point(3));
- The admitted value for the selected parameter. It is possible to select the value desired and confirm it with the "Apply" button. If no value appears in this table, the "Min Value" and "Max Value" are the limit of the parameter. (Fig. 11, point(4));
- The "Apply" button is used to confirm the new value of the parameter, the "Default" button is used to load the factory value for the parameter. In "New Value" edit box it is possible to set the new value. (Fig. 11, point(5));

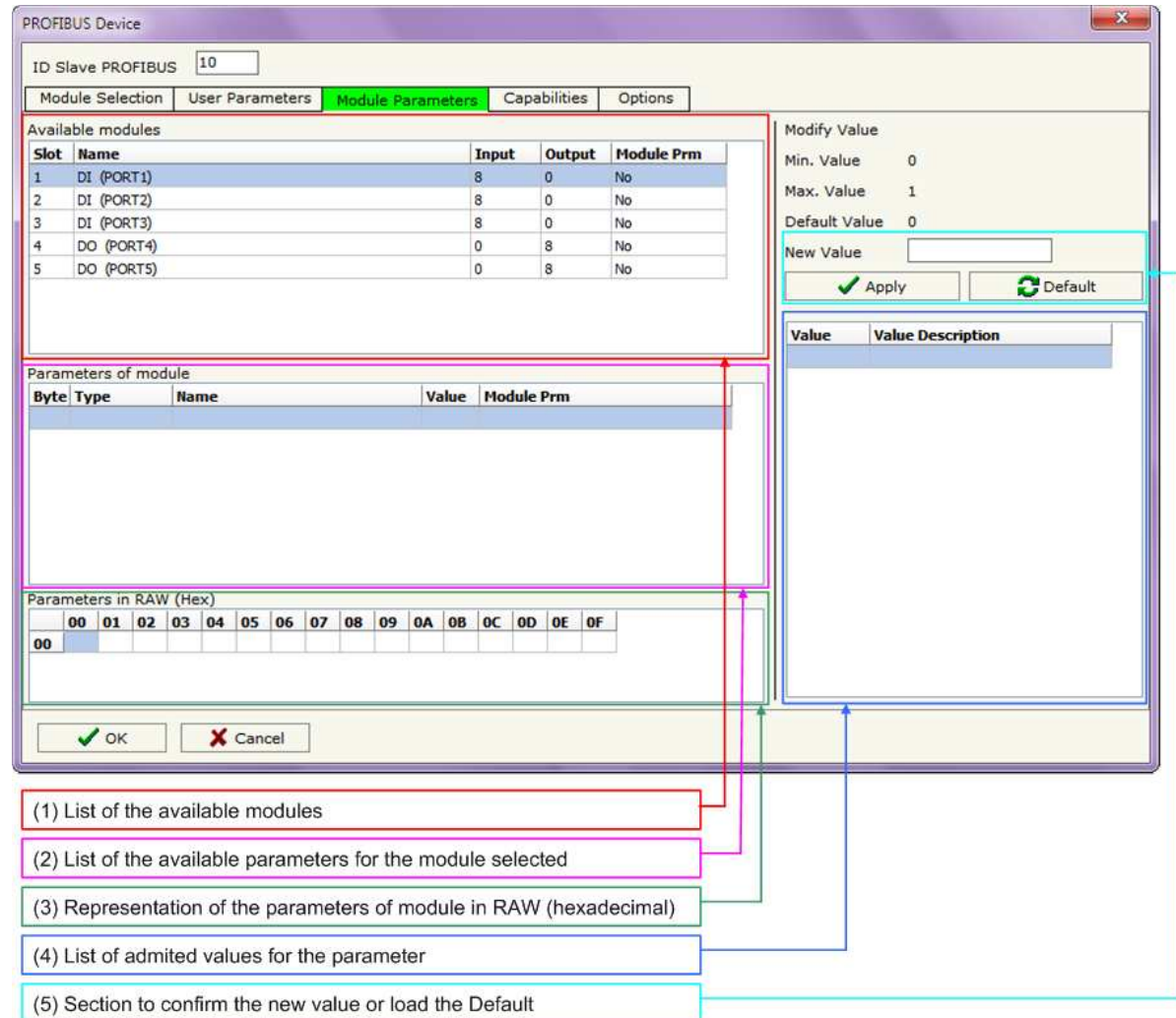


Figure 11: "PROFIBUS Device – Module Parameters" window

**CAPABILITIES:**

The section "Capabilities" is used only to show which features/baudrates available in the PROFIBUS device. The Green Icon indicate that capability/baudrate is available, the Red Icon indicate no compatibilities with that capability/baudrate (Fig. 12).

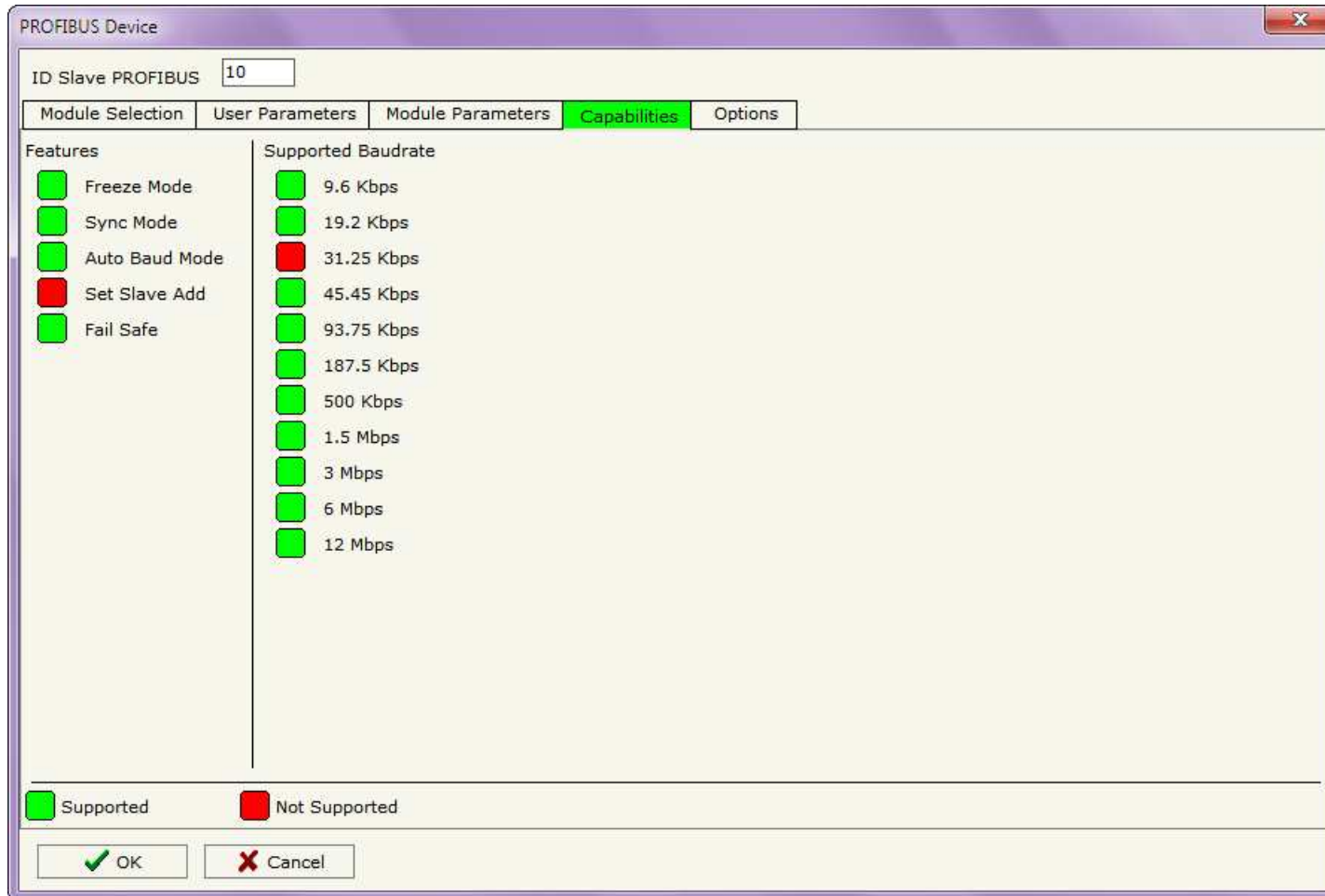


Figure 12: "PROFIBUS Device – Capabilities" window

**OPTIONS:**

The section "Options" is used to enable some option for each PROFIBUS device (Fig. 13).

The means of the fields are:

- In the field "**Enable Sync**" the PROFIBUS Sync command is enable. This option is enable only if the "Sync Mode" is supported by the device (see Capabilities section to check it);
- In the field "**Enable Freeze**" the PROFIBUS Freeze command is enable. This option is enable only if the "Freeze Mode" is supported by the device (see Capabilities section to check it);
- In the field "**Reset data if PROFIBUS master loses communication from the slave**" is possible to select to cancel the data of the slave if the Master lost the connection with the device;
- In the field "**Reset data if DeviceNet master doesn't write data with slave in ... milliseconds**" is possible to select to cancel the data sent to the slave PROFIBUS if the Converter don't receive a DeviceNet frame within the time expressed in the field.

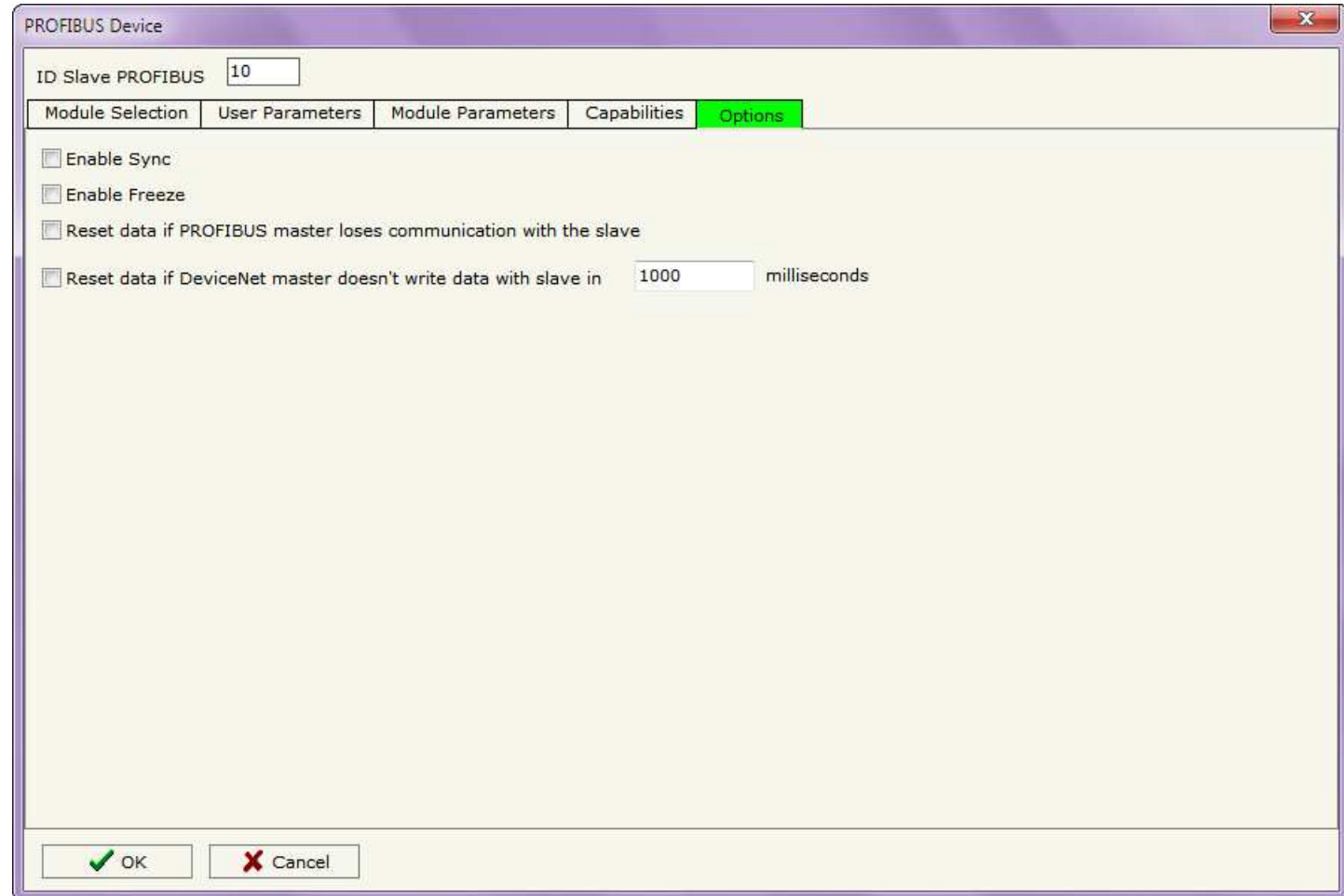



Figure 13: "PROFIBUS Device - Options" window

**DEFINE OFFSET:**

By pressing the "Define Offset" button from the main window for SW67570 (Fig. 2) the window "Define Offset" (Fig. 14) appears.

In this window is possible to select for each Byte IN and each Byte OUT of PROFIBUS where the DeviceNet information are located.

 **Note:** If you don't need to have on DeviceNet a byte you have to select None.

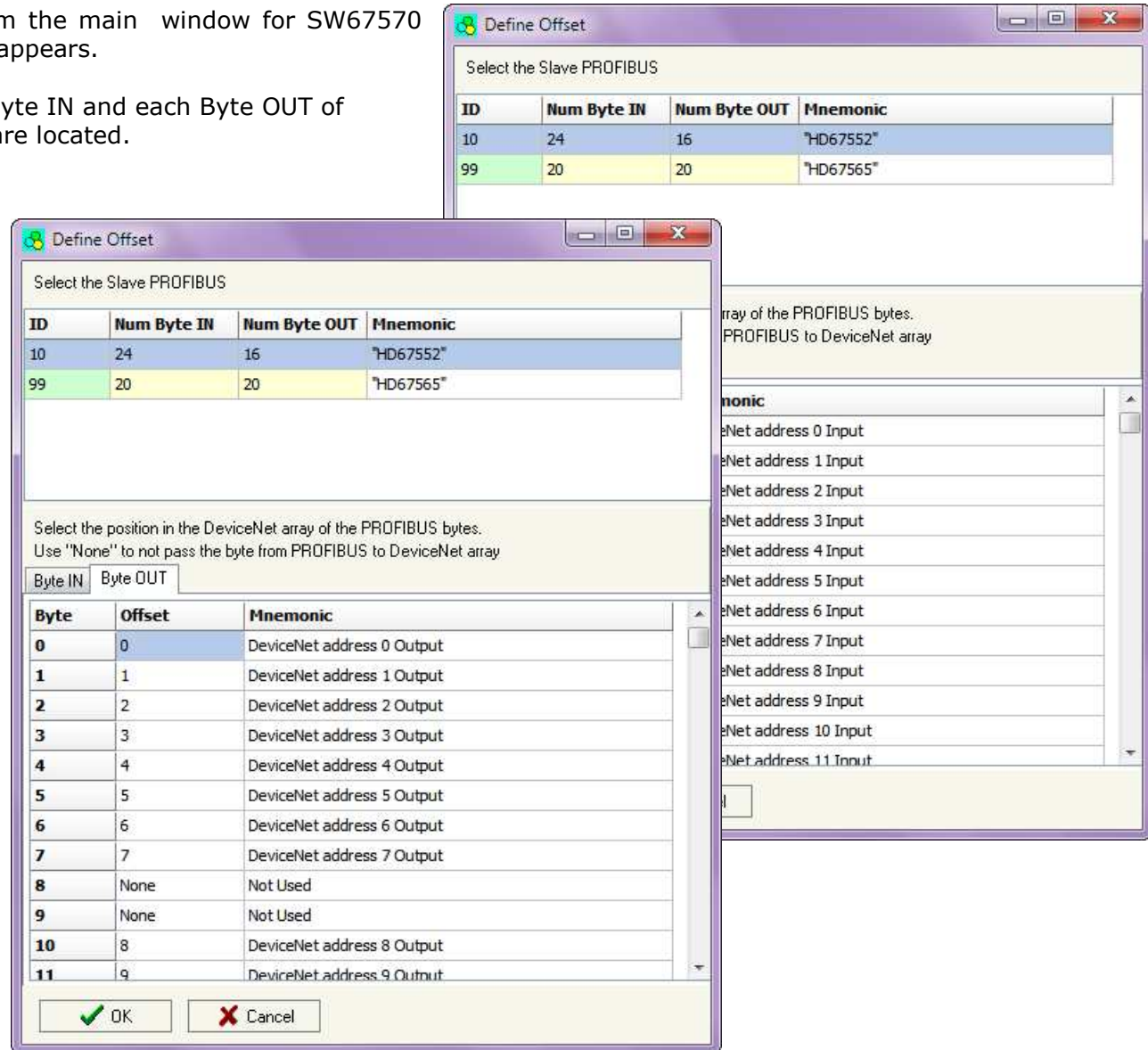


Figure 14: "Define Offset" window



**UPDATE DEVICE:**

By pressing the "**Update Device**" button it is possible to load the created Configuration into the device; and also the Firmware, if is necessary.

If you don't know the actual IP address of the device you have to use this procedure:

- Turn off the Device;
- Put Dip2 of 'Dip-Switch A' at ON position;
- Turn on the device
- Connect the Ethernet cable;
- Insert the IP "**192.168.2.205**";
- Press the "**Ping**" button, must appear "Device Found!";
- Press the "**Next**" button;
- Select which operations you want to do;
- Press the "**Execute update firmware**" button to start the upload;
- When all the operations are "OK" turn off the Device;
- Put Dip2 of 'Dip-Switch A' at OFF position;
- Turn on the device.

At this point the configuration/firmware on the device is correctly updated.

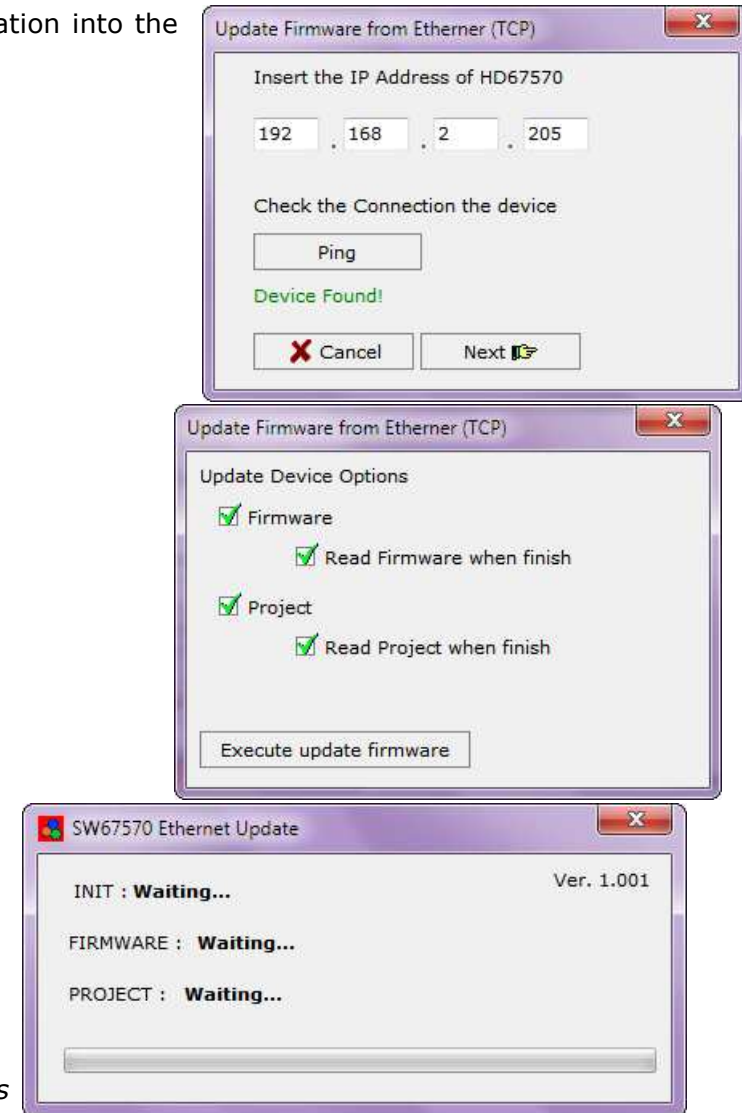


Figure 6: "Update device" windows

If you know the actual IP address of the device you have to use this procedure:

- Turn on the Device with the Ethernet cable inserted;
- Insert the actual IP of the Converter;
- Press the "**Ping**" button, must appear "Device Found!";
- Press the "**Next**" button;
- Select which operations you want to do;
- Press the "**Execute update firmware**" button to start the upload;
- When all the operations are "OK" the device automatically goes at Normal Mode.

At this point the configuration/firmware on the device is correctly update.



Note:

When you install a new version of the software it is better if the first time you do the update of the Firmware in the HD67570-A1 device.



Note:

When you receive the device, for the first time, you have to update also the Firmware in the HD67570-A1 device.



Warning:

If the Fig. 7 appears when you try to do the Update before require assistance try these points:

- Try to repeat the operations for the updating;
- Try with another PC;
- Try to restart the PC;
- If you are using the program inside a Virtual Machine, try to use in the main Operating System;
- If you are using Windows Seven or Vista or 8, make sure that you have the administrator privileges;
- Take attention at Firewall lock;
- Check the LAN settings.

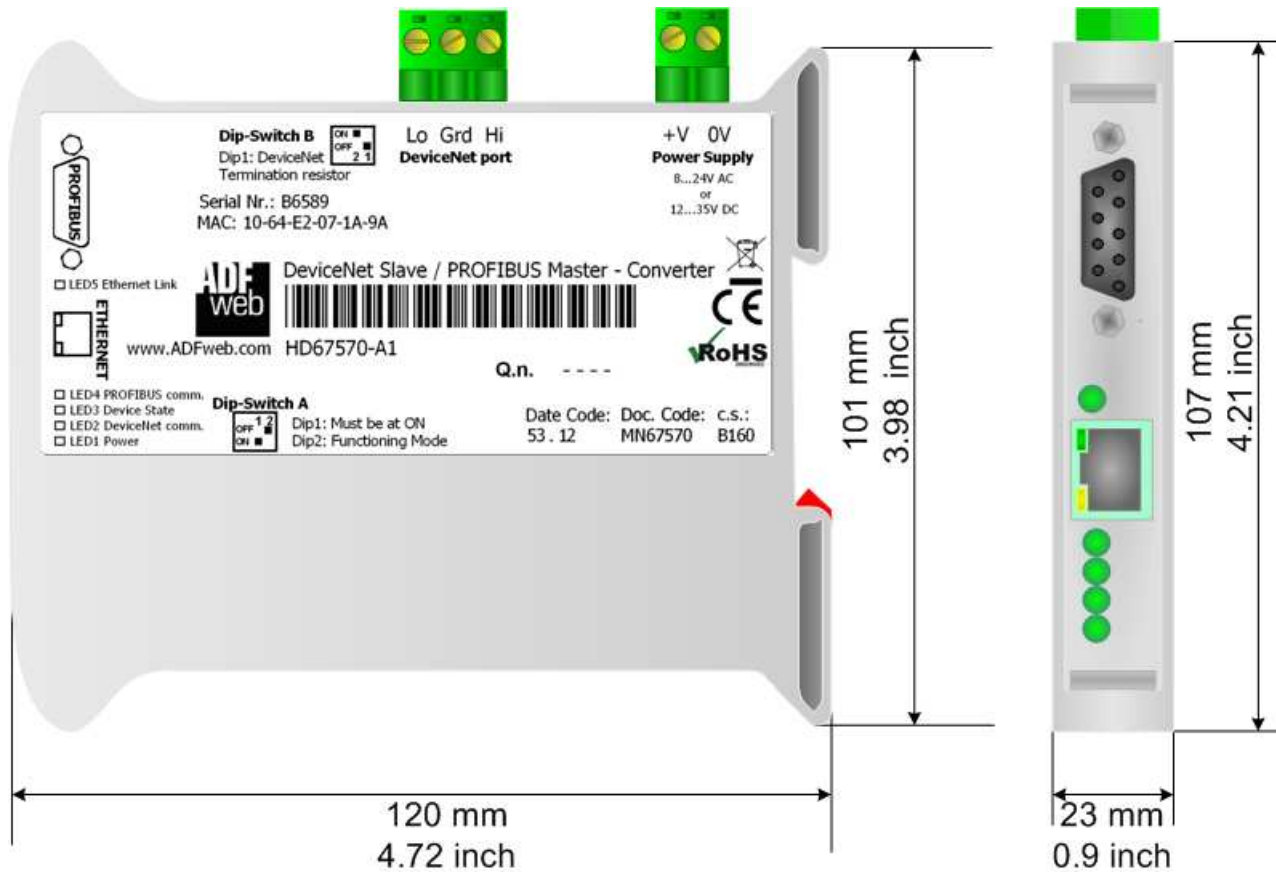


In the case of HD67570-A1 you have to use the software "SW67570": [www.adfweb.com/download/filefold/SW67570.zip](http://www.adfweb.com/download/filefold/SW67570.zip).



Figure 7: "Protection" window

**MECHANICAL DIMENSIONS:**

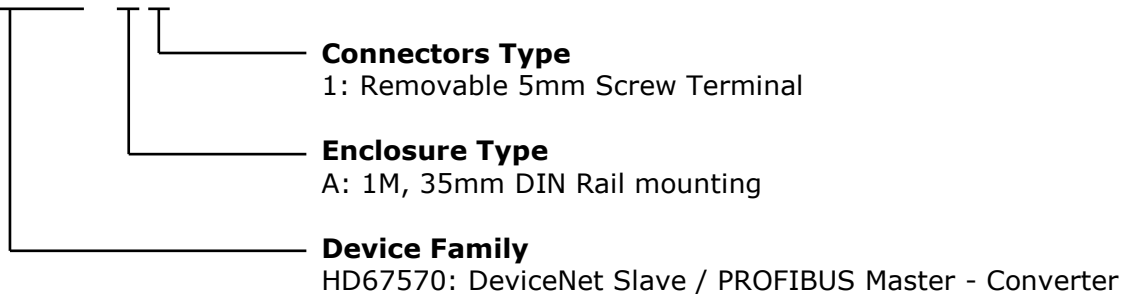


Housing: PVC  
Weight: 200g (Approx)

Figure 8: Mechanical dimensions scheme

**ORDERING INFORMATION:**

The ordering part number is formed by a valid combination of the following:

**HD67570 - A 1**

Order Code: **HD670570-A1** - DeviceNet Slave / PROFIBUS Master - Converter

**ACCESSORIES:**

Order Code: **AC34001** - 35mm Rail DIN - Power Supply 220/240V AC 50/60Hz - 12 V AC

Order Code: **AC34002** - 35mm Rail DIN - Power Supply 110V AC 50/60Hz - 12 V AC

## DISCLAIMER

All technical content within this document can be modified without notice. The content of the document content is a recurring audit. For losses due to fire, earthquake, third party access or other accidents, or intentional or accidental abuse, misuse, or use under abnormal conditions repairs are charged to the user. ADFweb.com S.r.l. will not be liable for accidental loss of use or inability to use this product, such as loss of business income. ADFweb.com S.r.l. shall not be liable for consequences of improper use.

## OTHER REGULATIONS AND STANDARDS

### WEEE INFORMATION



Disposal of old electrical and electronic equipment (as in the European Union and other European countries with separate collection systems).

— This symbol on the product or on its packaging indicates that this product may not be treated as household rubbish. Instead, it should be taken to an applicable collection point for the recycling of electrical and electronic equipment. If the product is disposed correctly, you will help prevent potential negative environmental factors and human health, which could otherwise be caused by inappropriate disposal. The recycling of materials will help to conserve natural resources. For more information about recycling this product, please contact your local city office, your household waste disposal service or the shop where you purchased the product.

### RESTRICTION OF HAZARDOUS SUBSTANCES DIRECTIVE



The device respects the 2002/95/EC Directive on the restriction of the use of certain hazardous substances in electrical and electronic equipment (commonly referred to as Restriction of Hazardous Substances Directive or RoHS).

### CE MARKING



The product conforms with the essential requirements of the applicable EC directives.

**WARRANTIES AND TECHNICAL SUPPORT:**

For fast and easy technical support for your ADFweb.com SRL products, consult our internet support at [www.adfweb.com](http://www.adfweb.com). Otherwise contact us at the address support@adfweb.com

**RETURN POLICY:**

If while using your product you have any problem and you wish to exchange or repair it, please do the following:

- 1) Obtain a Product Return Number (PRN) from our internet support at [www.adfweb.com](http://www.adfweb.com). Together with the request, you need to provide detailed information about the problem.
- 2) Send the product to the address provided with the PRN, having prepaid the shipping costs (shipment costs billed to us will not be accepted).

If the product is within the warranty of twelve months, it will be repaired or exchanged and returned within three weeks. If the product is no longer under warranty, you will receive a repair estimate.

**PRODUCTS AND RELATED DOCUMENTS:**

Part	Description	URL
HD67181	CAN bus Repeater	<a href="http://www.adfweb.com?product=HD67181">www.adfweb.com?product=HD67181</a>
HD67316	CAN bus Analyzer	<a href="http://www.adfweb.com?product=HD67316">www.adfweb.com?product=HD67316</a>
HD67119	USB ↔ RS485 Converter	<a href="http://www.adfweb.com?product=HD67119">www.adfweb.com?product=HD67119</a>