

# User Manual

Revision 1.000  
English

## EtherNet/IP Master / CANopen - Converter

(Order Code: HD67646-A1)

for Website information:

<http://www.adfweb.com/?Product=HD67646>

for Price information:

<http://www.adfweb.com/?Price=HD67646-A1>

### Benefits and Main Features:

- ✦ Triple electrical isolation
- ✦ Two Ethernet ports
- ✦ Temperature range: -40°C/+85°C (-40°F/+185°F)



User Manual



For others EtherNet/IP Master devices, see also the following links:

#### EtherNet/IP Master from/to ...

- [www.adfweb.com?Product=HD67158](http://www.adfweb.com?Product=HD67158)
- [www.adfweb.com?Product=HD67643](http://www.adfweb.com?Product=HD67643)
- [www.adfweb.com?Product=HD67645](http://www.adfweb.com?Product=HD67645)
- [www.adfweb.com?Product=HD67646](http://www.adfweb.com?Product=HD67646)
- [www.adfweb.com?Product=HD67647](http://www.adfweb.com?Product=HD67647)
- [www.adfweb.com?Product=HD67661](http://www.adfweb.com?Product=HD67661)
- [www.adfweb.com?Product=HD67665](http://www.adfweb.com?Product=HD67665)
- [www.adfweb.com?Product=HD67667](http://www.adfweb.com?Product=HD67667)
- [www.adfweb.com?Product=HD67669](http://www.adfweb.com?Product=HD67669)
- [www.adfweb.com?Product=HD67689](http://www.adfweb.com?Product=HD67689)
- [www.adfweb.com?Product=HD67806](http://www.adfweb.com?Product=HD67806)
- [www.adfweb.com?Product=HD67955](http://www.adfweb.com?Product=HD67955)

- (SNMP Agent)
- (PROFIBUS Slave)
- (CAN)
- (CANopen)
- (DeviceNet Slave)
- (PROFINET)
- (Modbus TCP Slave)
- (Serial)
- (Modbus Slave)
- (BACnet Slave)
- (KNX)
- (MQTT)

Do you have an your customer protocol?

See the following links:

[www.adfweb.com?Product=HD67003](http://www.adfweb.com?Product=HD67003)

Do you need to choose a device? do you want help?

Ask it to the following link:

[www.adfweb.com?Cmd=helpme](http://www.adfweb.com?Cmd=helpme)

**INDEX:**

	Page
INDEX	2
UPDATED DOCUMENTATION	2
REVISION LIST	2
WARNING	2
TRADEMARKS	2
SECURITY ALERT	3
EXAMPLE OF CONNECTION	4
CONNECTION SCHEME	5
CHARACTERISTICS	6
CONFIGURATION	6
POWER SUPPLY	7
FUNCTION MODES	8
LEDS	9
CANOPEN	10
ETHERNET	11
USE OF COMPOSITOR SW67646	12
NEW PROJECT / OPEN PROJECT	13
SOFTWARE OPTIONS	14
SET COMMUNICATION	16
ETHERNET/IP ACCESS	17
SET SDO SERVER	18
SET SDO CLIENT	19
SET PDO ACCESS	21
EDS FILE	22
UPDATE DEVICE	23
MECHANICAL DIMENSIONS	25
ORDERING INFORMATIONS	26
ACCESSORIES	26
DISCLAIMER	27
OTHER REGULATIONS AND STANDARDS	27
WARRANTIES AND TECHNICAL SUPPORT	28
RETURN POLICY	28

**UPDATED DOCUMENTATION:**

Dear customer, we thank you for your attention and we remind you that you need to check that the following document is:

- ✚ Updated
- ✚ Related to the product you own

To obtain the most recently updated document, note the “document code” that appears at the top right-hand corner of each page of this document.

With this “Document Code” go to web page [www.adfweb.com/download/](http://www.adfweb.com/download/) and search for the corresponding code on the page. Click on the proper “Document Code” and download the updates.

**REVISION LIST:**

Revision	Date	Author	Chapter	Description
1.000	13/03/2018	Ff	All	First release version

**WARNING:**

ADFweb.com reserves the right to change information in this manual about our product without warning.  
ADFweb.com is not responsible for any error this manual may contain.

**TRADEMARKS:**

All trademarks mentioned in this document belong to their respective owners.

**SECURITY ALERT:****GENERAL INFORMATION**

To ensure safe operation, the device must be operated according to the instructions in the manual. When using the device, legal and safety regulation are required for each individual application. The same applies also when using accessories.

**INTENDED USE**

Machines and systems must be designed so the faulty conditions do not lead to a dangerous situation for the operator (i.e. independent limit switches, mechanical interlocks, etc.).

**QUALIFIED PERSONNEL**

The device can be used only by qualified personnel, strictly in accordance with the specifications.

Qualified personnel are persons who are familiar with the installation, assembly, commissioning and operation of this equipment and who have appropriate qualifications for their job.

**RESIDUAL RISKS**

The device is state-of-the-art and is safe. The instruments can represent a potential hazard if they are inappropriately installed and operated by untrained personnel. These instructions refer to residual risks with the following symbol:

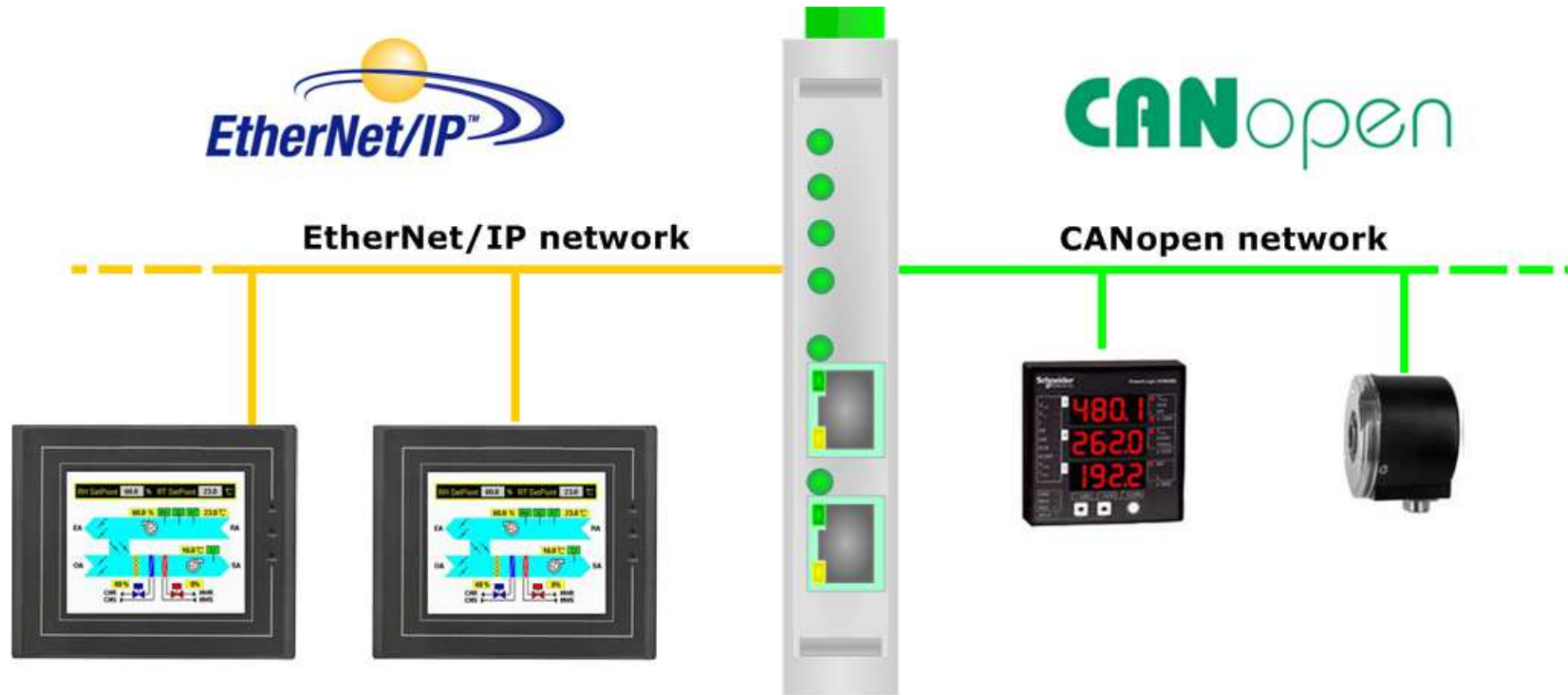


This symbol indicates that non-observance of the safety instructions is a danger for people that could lead to serious injury or death and / or the possibility of damage.

**CE CONFORMITY**

The declaration is made by our company. You can send an email to [support@adfweb.com](mailto:support@adfweb.com) or give us a call if you need it.

**EXAMPLE OF CONNECTION:**



**HD67646-A1**



**ADFweb.com srl**  
tel. +39 - 0438.30.91.31  
[www.adfweb.com](http://www.adfweb.com)  
[info@adfweb.com](mailto:info@adfweb.com)

**CONNECTION SCHEME:**

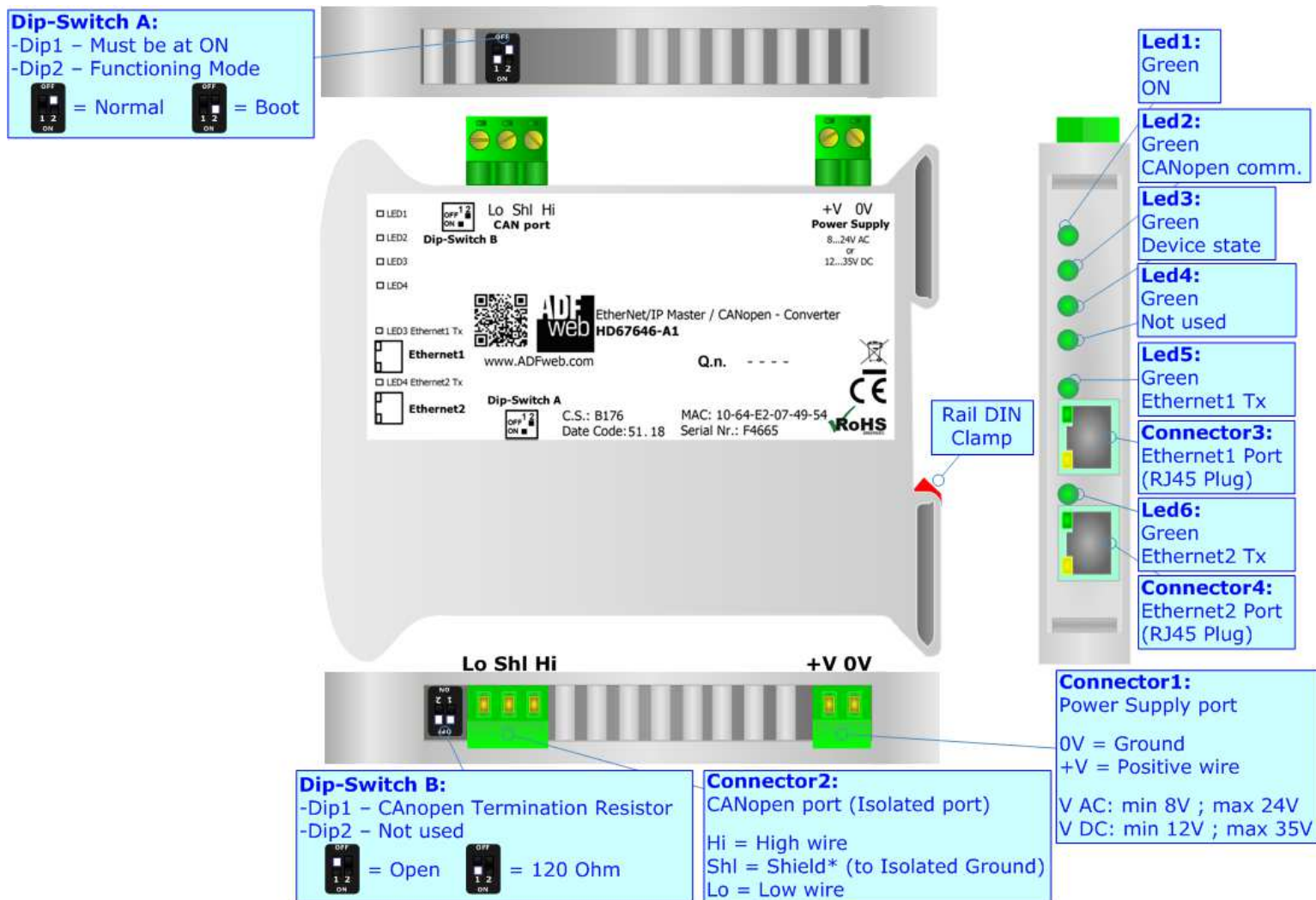


Figure 1: Connection scheme for HD67646-A1

**CHARACTERISTICS:**

The HD67646-A1 is a EtherNet/IP Master / CANopen Converter.

It allows the following characteristics:

- Two-directional information between EtherNet/IP and CANopen;
- Electrical isolation between CANopen – EtherNet/IP, Power Supply – EtherNet/IP, Power Supply – CANopen;
- Mountable on 35mm Rail DIN;
- Wide power supply input range: 8...24V AC or 12...35V DC;
- Wide temperature range: -40°C / 85°C [-40°F / +185°F].

**CONFIGURATION:**

You need Compositor SW67646 software on your PC in order to perform the following:

- Define the parameter of the CANopen;
- Define the parameter of the EtherNet/IP;
- Define SDO Server information;
- Define SDO Client information;
- Define PDO information (RPDO/TPDO);
- Define the list of EtherNet/IP slaves connected to the converter;
- Update the device.

**POWER SUPPLY:**

The devices can be powered between a wide range of tensions. For more details see the two tables below.

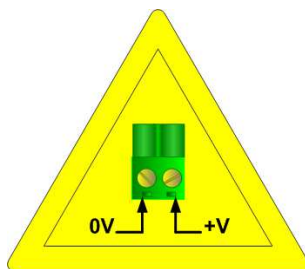
	VAC		VDC	
	Vmin	Vmax	Vmin	Vmax
<b>HD67646-A1</b>	<b>8V</b>	<b>24V</b>	<b>12V</b>	<b>35V</b>

Consumption at 24V DC:

Device	W/VA
HD67646-A1	4

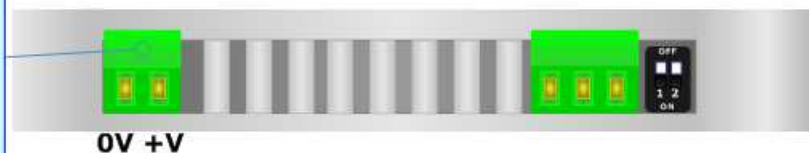


**Caution: Not reverse the polarity power**



HD67646-A1

**Connector1:**  
 Power Supply port  
 0V = Ground  
 +V = Positive wire  
 V AC: min 8V ; max 24V  
 V DC: min 12V ; max 35V



**FUNCTION MODES:**

The device has got two functions mode depending of the position of the Dip2 of 'Dip-Switch A':

- The first, with Dip2 in Off position (factory setting), is used for the normal working of the device.
- The second, with Dip2 in On position, is used for upload the Project/Firmware.

For the operations to follow for the updating (see 'UPDATE DEVICE' section).

According to the functioning mode, the LEDs will have specifics functions (see 'LEDS' section).

**Warning:**

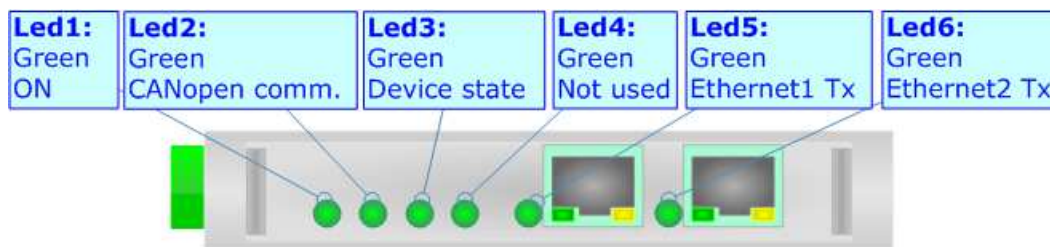
Dip1 of 'Dip-Switch A' must be at ON position to work even if the Ethernet cable is not inserted.



**LEDS:**

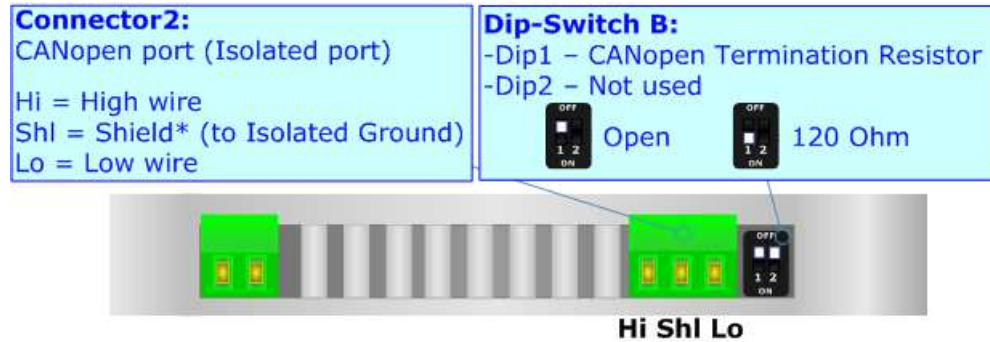
The device has got six LEDs that are used to give information of the functioning status. The various meanings of the LEDs are described in the table below.

LED	Normal Mode	Boot Mode
1: ON [supply voltage ] (green)	<b>ON:</b> Device powered <b>OFF:</b> Device not powered	<b>ON:</b> Device powered <b>OFF:</b> Device not powered
2: CANopen communication (green)	Blinks when a CANopen message is received	<b>Blinks quickly:</b> Boot state <b>Blinks very slowly (~0.5Hz):</b> update in progress
3: Device State (green)	Blinks slowly (~1Hz)	<b>Blinks quickly:</b> Boot state <b>Blinks very slowly (~0.5Hz):</b> update in progress
4: Not used (green)	OFF	<b>Blinks quickly:</b> Boot state <b>Blinks very slowly (~0.5Hz):</b> update in progress
5: Ethernet1 Tx (green)	Blinks when is transmitting Ethernet frames	<b>Blinks quickly:</b> Boot state <b>Blinks very slowly (~0.5Hz):</b> update in progress
6: Ethernet2 Tx (green)	Blinks when is transmitting Ethernet frames	<b>Blinks quickly:</b> Boot state <b>Blinks very slowly (~0.5Hz):</b> update in progress



**CANOPEN:**

For terminate the CANopen line with a 120Ω resistor it is necessary that the Dip1 of 'Dip-Switch B' is at ON position.

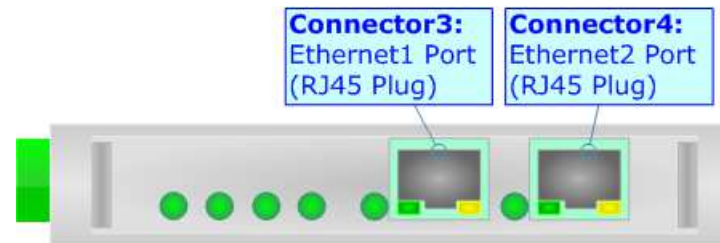


Cable characteristics:

<b>DC parameter:</b>	Impedance	70 Ohm/m
<b>AC parameters:</b>	Impedance	120 Ohm/m
	Delay	5 ns/m
<b>Length</b>	<b>Baud Rate [bps]</b>	<b>Length MAX [m]</b>
	10 K	5000
	20 K	2500
	50 K	1000
	100 K	650
	125 K	500
	250 K	250
	500 K	100
	800 K	50
	1000 K	25

**ETHERNET:**

The Ethernet connection must be made using Connector3 or Connector4 of HD67646-A1 with at least a Category 5E cable. The maximum length of the cable should not exceed 100m. The cable has to conform to the T568 norms relative to connections in cat.5 up to 100 Mbps. To connect the device to an Hub/Switch is recommended the use of a straight cable, to connect the device to a PC/PLC/other is recommended the use of a cross cable.



**USE OF COMPOSITOR SW67646:**

To configure the Converter, use the available software that runs with Windows called SW67646. It is downloadable on the site [www.adfweb.com](http://www.adfweb.com) and its operation is described in this document. *(This manual is referenced to the last version of the software present on our web site)*. The software works with MSWindows (XP, Vista, Seven, 8, 10; 32/64bit).

When launching the SW67646, the window below appears (Fig. 2).



**Note:**

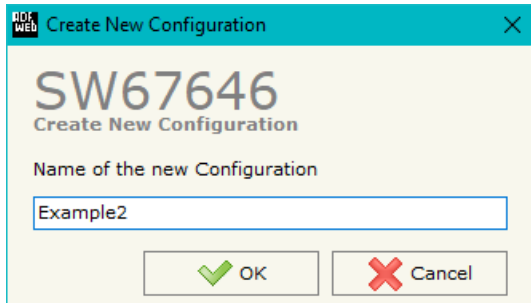
It is necessary to have installed .Net Framework 4.



Figure 2: Main window for SW67646

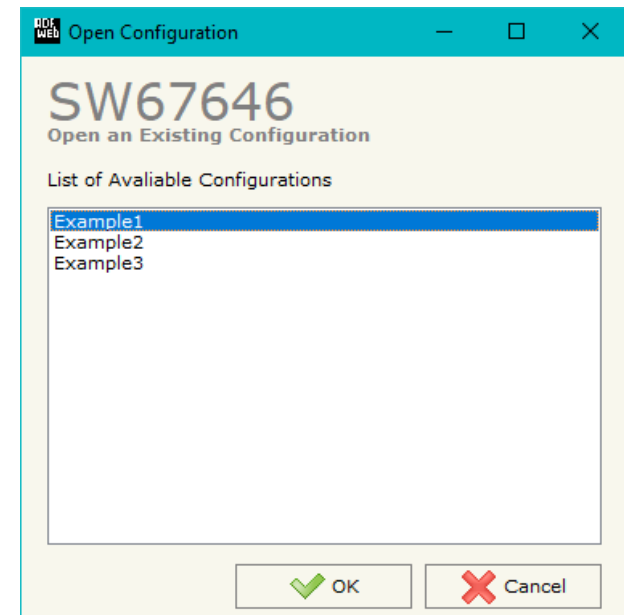
**NEW CONFIGURATION / OPEN CONFIGURATION:**

The “**New Configuration**” button creates the folder which contains the entire device’s configuration.




A device’s configuration can also be imported or exported:

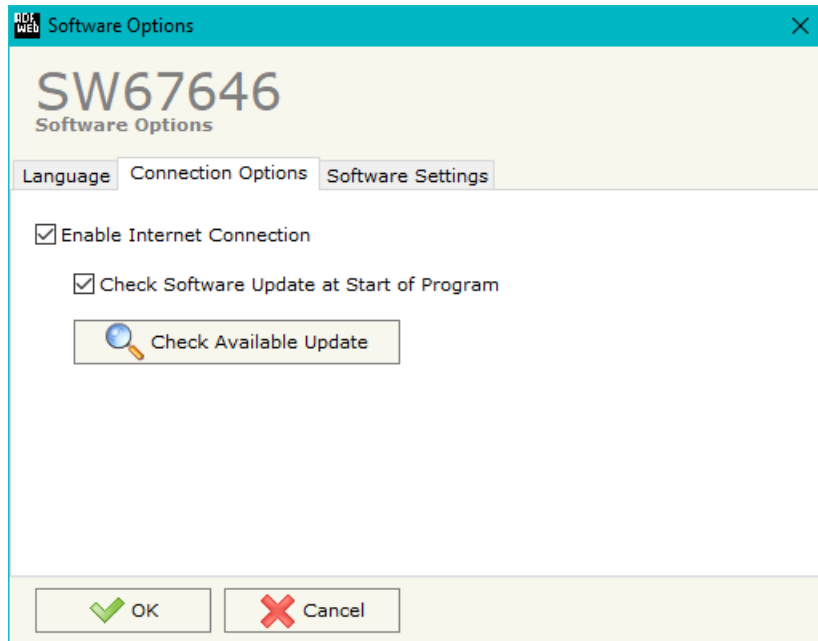
- To clone the configurations of a programmable “EtherNet/IP Master / CANopen - Converter” in order to configure another device in the same manner, it is necessary to maintain the folder and all its contents;
- To clone a project in order to obtain a different version of the project, it is sufficient to duplicate the project folder with another name and open the new folder with the button “**Open Configuration**”.



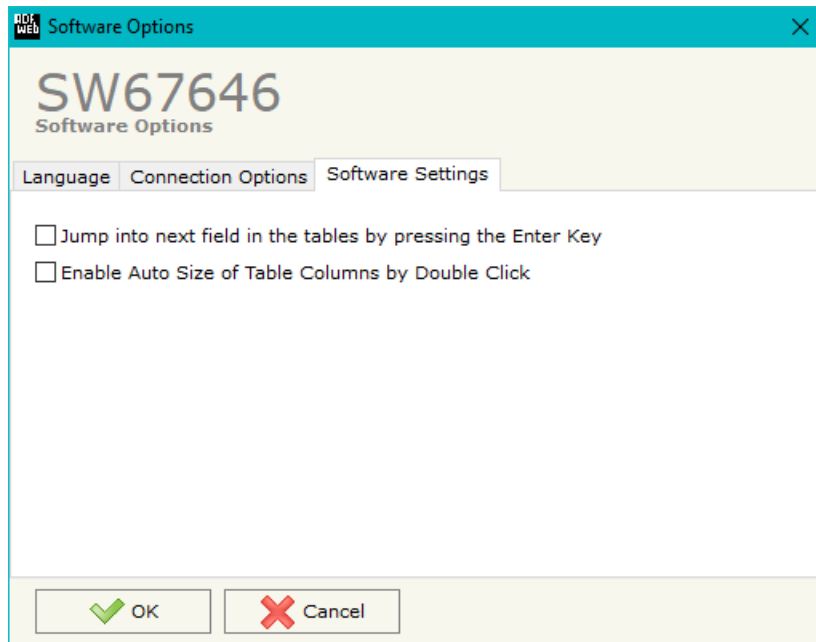
**SOFTWARE OPTIONS:**

By pressing the “**Settings**” () button there is the possibility to change the language of the software and check the updatings for the compositor.

In the section “Language” it is possible to change the language of the software.



In the section “Connection Options”, it is possible to check if there are some updatings of the software compositor in ADFweb.com website. Checking the option “**Check Software Update at Start of Program**”, the SW67646 check automatically if there are updatings when it is launched.



In the section "Software Settings", it is possible to enable/disable some keyboard's commands for an easier navigation inside the tables contained in the different sections of the software.

## SET COMMUNICATION:

This section define the fundamental communication parameters of two buses, CANopen and EtherNet/IP.

By Pressing the **"Set Communication"** button from the main window for SW67646 (Fig. 2) the window "Set Communication" appears (Fig. 3).

The means of the fields for the "CANopen" section are:

- In the field **"Device ID"** the ID of the CANopen side is defined;
- In the field **"Baud Rate"** the data rate of the CANopen line is defined;
- In the field **"Set Operational State at Start-Up"** the state of the CANopen is defined. I.e. If it is checked the board starts in Operational State, else it starts in Pre-Operational;
- In the field **"Network Start at Start-Up"** the state of the CANopen network is defined. I.e. If it is checked the board sends a command to set the Operational State of all the devices present in the network, after the time defined in the "Delay" field;
- In the field **"Delay (s)"** the delay before sending the "Start" command for the CANopen is defined;
- In the field **"SDO Client TimeOut (1/10 ms)"** the maximum time that the device attends for the answer from the Slave interrogated is defined;

The means of the fields for "EtherNet/IP Master" are:

- In the fields **"IP ADDRESS"** the IP address for EtherNet/IP side of the converter is defined;
- In the fields **"SUBNET Mask"** the SubNet Mask for EtherNet/IP side of the converter is defined;
- In the fields **"GATEWAY"** the default gateway of the net is defined. This feature can be enabled or disabled pressing the Check Box field. This feature is used for going out of the net;
- In the field **"Port"** the port used for EtherNet/IP communication is defined. The port has a fixed value of 44818.

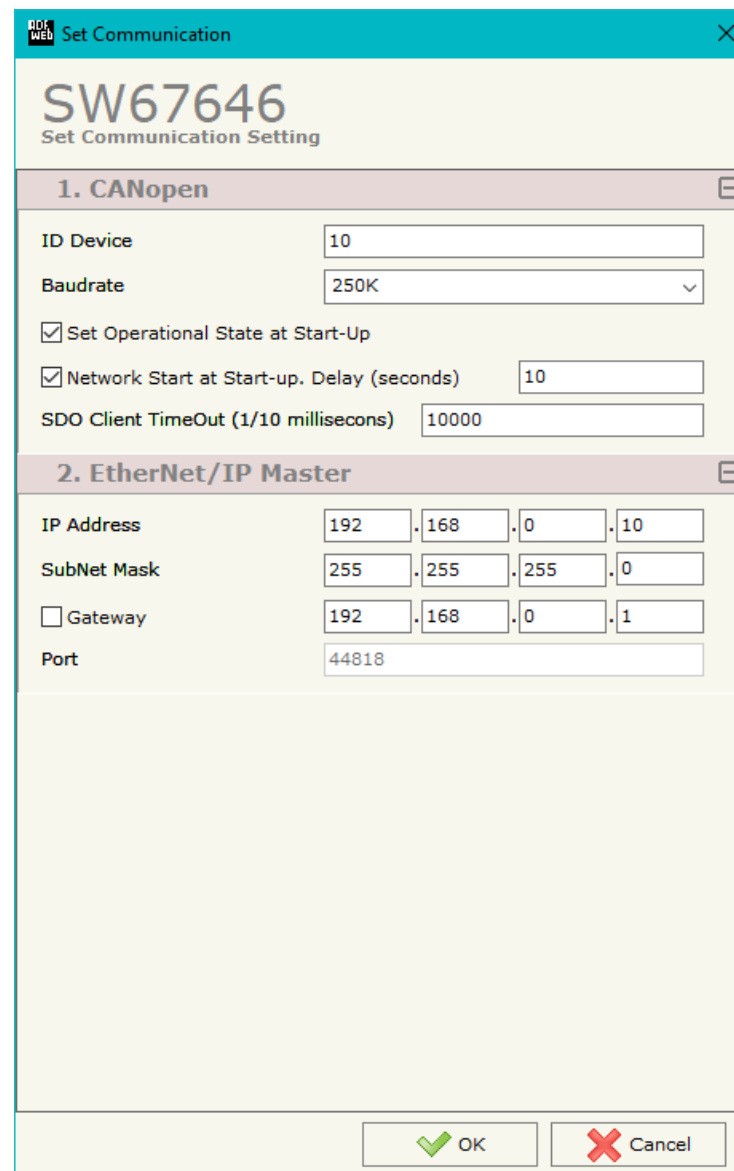


Figure 3: "Set Communication" window



**ETHERNET/IP ACCESS:**

By Pressing the “**EtherNet/IP Access**” button from the main window for SW67646 (Fig. 2) the window “Set EtherNet/IP Slaves Access” appears (Fig. 4).

This section is used to define the list of the EtherNet/IP slaves to read/write from CANopen side.

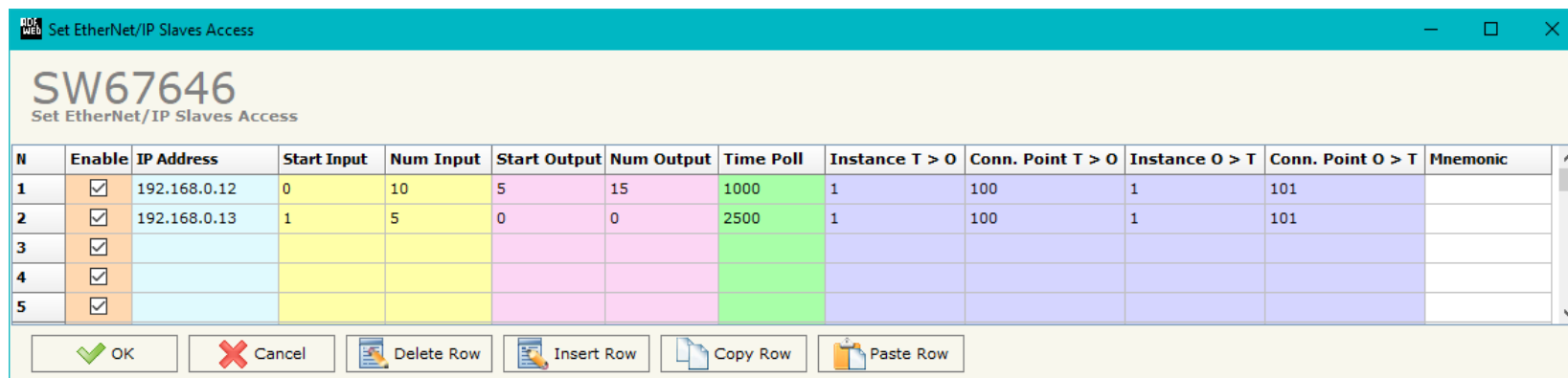


Figure 4: “Set EtherNet/IP Slaves Access” window

The means of the fields are:

- If the field “**Enable**” is checked, the polling to the EtherNet/IP slave is enabled;
- In the field “**IP Address**” the IP Address of the EtherNet/IP slave is defined;
- In the field “**Start Input**” the starting Input byte of the EtherNet/IP slave to map on CANopen side is defined;
- In the field “**Num Input**” the number of consecutive Input byte to map on CANopen side is defined;
- In the field “**Start Output**” the starting Output byte of the EtherNet/IP slave to write from CANopen side is defined;
- In the field “**Num Output**” the number of consecutive Output byte to write from CANopen side is defined;
- In the field “**Time Poll**” the polling time in ms is defined;
- In the field “**Instance T > O**” the instance of the assembly for the Target to Originator data direction is defined;
- In the field “**Conn. Point T > O**” the connection point of the assembly for the Target to Originator data direction is defined;
- In the field “**Instance O > T**” the instance of the assembly for the Originator to Target data direction is defined;
- In the field “**Conn. Point O > T**” the connection point of the assembly for the Originator to Target data direction is defined;
- In the field “**Mnemonic**” a brief description is defined.

### SET SDO SERVER:

By pressing the **"Set SDO Server"** button from the main window for SW67646 (Fig. 2) the window "Set SDO Server Access" appears (Fig. 5).

This window is made to create the SDO in read or write in the CANopen side, and to indicate which byte are associated to these SDOs.

It is divided in two parts, the "SDO in read" and the "SDO in Write".

The first part is used to read, using the SDO, the data arrived from the EtherNet/IP Slaves. The second is used to write, using SDO, the data that will be sent to the EtherNet/IP Slaves.

The data of the columns have the following meanings:

- In the field **"Index"** the address of the SDO is defined;
- In the field **"SubIndex"** the second address of the SDO is defined;
- If the field **"N Byte"** the dimension of the SDO is defined (it can be 1, 2 or 4);
- In the field **"Address Byte1"** insert the address of the EtherNet/IP arrays where reading/writing first byte of the SDO;
- In the field **"Address Byte2"** insert the address of the EtherNet/IP arrays where reading/writing second byte of the SDO (only if N Byte is 2 or 4);
- In the field **"Address Byte3"** insert the address of the EtherNet/IP arrays where reading/writing third byte of the SDO (only if N Byte is 4);
- In the field **"Address Byte4"** insert the address of the EtherNet/IP arrays where reading/writing fourth byte of the SDO (only if N Byte is 4);
- In the field **"Mnemonic"** the description for the SDO is defined.

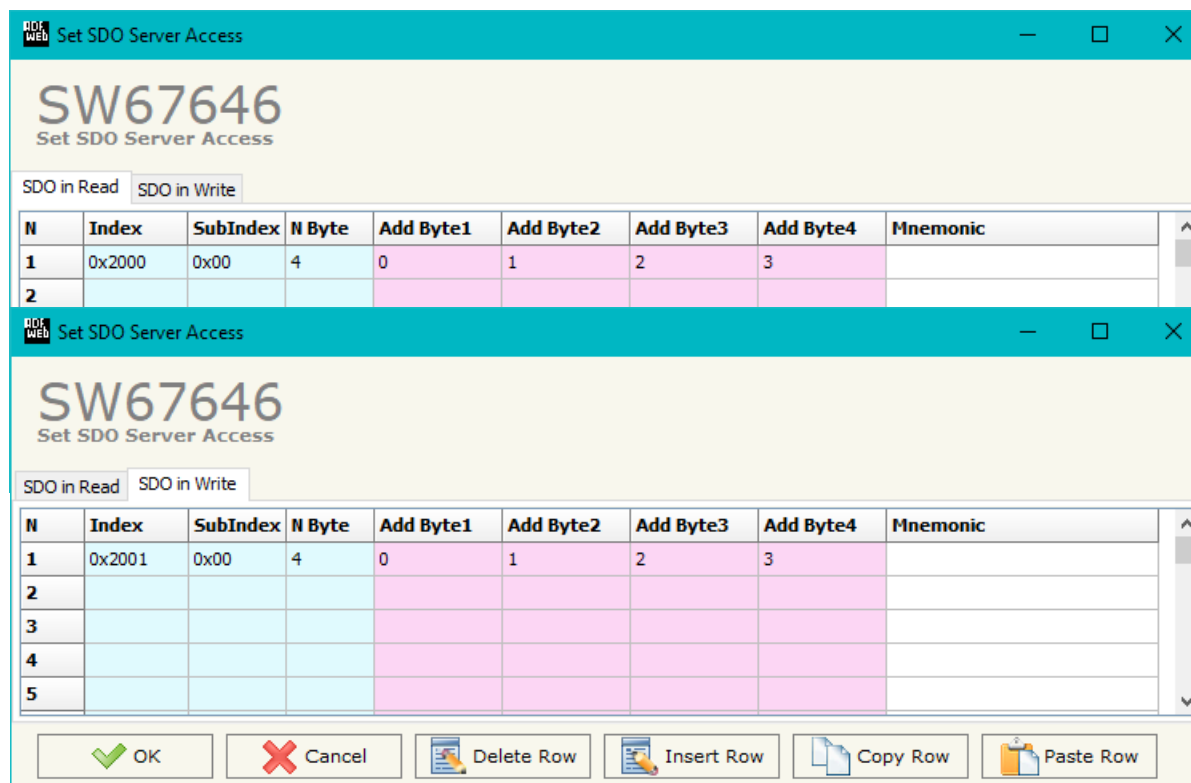


Figure 5: "Set SDO Server Access" window

### SET SDO CLIENT:

By pressing the "Set SDO Client" button from the main window for SW67646 (Fig. 2) the window "Set SDO Client Access" appears (Fig. 6a and 6b).

With the SDO Client the HD67646 gateway can read and/or write the data from other devices connected in the network CANopen.

It is divided in two parts, the "SDO Read" and the "SDO Write". The first part is used to read, using the SDO, the data in another device and then put them in the EtherNet/IP array. The second part is used to write, using the SDO, the data present in the EtherNet/IP array to CANopen devices.

The data of the columns in the "SDO Read" have the following meanings:

- In the field "Device ID" insert the ID of the device to read;
- In the field "Index" the address for the SDO is defined;
- In the field "SubIndex" the second address for the SDO is defined;
- In the field "N Byte" the dimension of the SDO is defined (it can be 1, 2, or 4);
- In the field "Poll Time" insert the cyclic time to make this request;
- In the field "Address Byte1" the address of the EtherNet/IP array where copying the first byte of the SDO read is defined;
- In the field "Address Byte2" the address of the EtherNet/IP array where copying the second byte of the SDO read is defined (only if N Byte is 2 or 4);
- In the field "Address Byte3" the address of the EtherNet/IP array where copying the third byte of the SDO read is defined (only if N Byte is 4);
- In the field "Address Byte4" the address of the EtherNet/IP array where copying the fourth byte of the SDO read is defined (only if N Byte is 4);
- In the field "Mnemonic" the description for the SDO is defined.

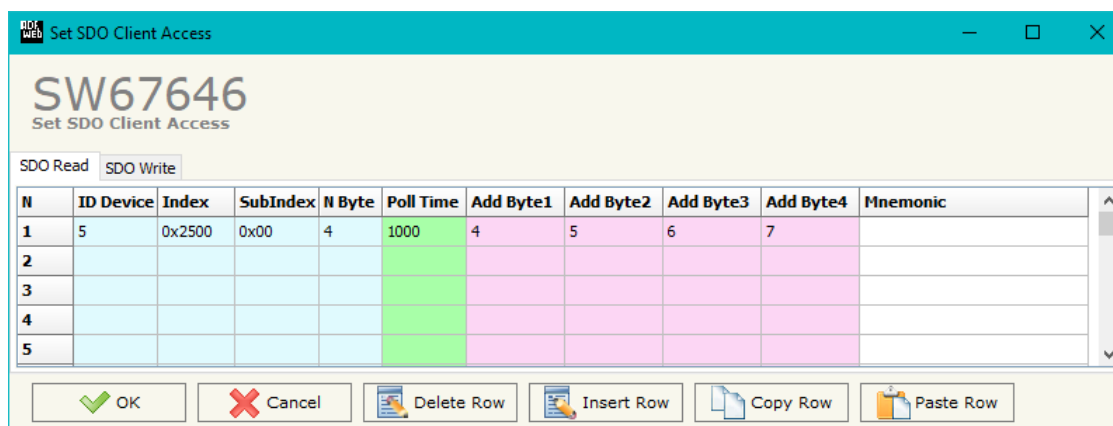


Figure 6a: "Set SDO Client Access – SDO Read" window

The data of the columns in the "SDO Write" have the following meanings:

- In the field "**Device ID**" insert the ID of the device to write;
- In the field "**Index**" the address for the SDO is defined;
- In the field "**SubIndex**" the second address for the SDO is defined;
- In the field "**N Byte**" the dimension of the SDO is defined (it can be 1, 2, or 4);
- In the field "**Poll Time**" insert the cyclic time to make this request;
- If the field "**On Change**" is checked, the gateway sends the Write SDO request when the data change the value;
- In the field "**Address Byte1**" the address of the EtherNet/IP array where reading the first byte of the SDO write is defined;
- In the field "**Address Byte2**" the address of the EtherNet/IP array where reading the second byte of the SDO write is defined (only if N Byte is 2 or 4);
- In the field "**Address Byte3**" the address of the EtherNet/IP array where reading the third byte of the SDO write is defined (only if N Byte is 4);
- In the field "**Address Byte4**" the address of the EtherNet/IP array where reading the fourth byte of the SDO write is defined (only if N Byte is 4);
- In the field "**Mnemonic**" the description for the SDO is defined.

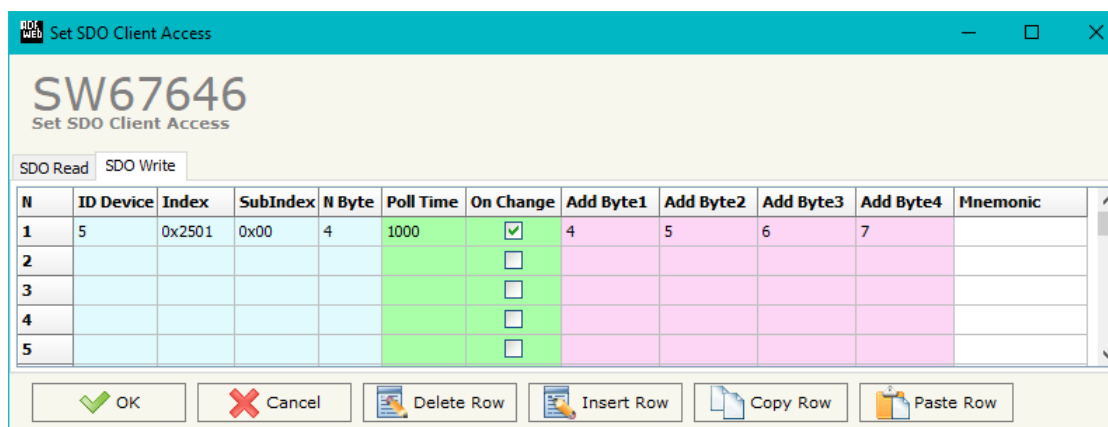


Figure 6b: "Set SDO Client Access – SDO Write" window

### SET PDO ACCESS:

By pressing the "Set PDO Access" button from the main window for SW67646 (Fig. 2) the window "Set PDO Access" appears (Fig. 7a and 7b).

This window is made to create the Receive and the Transmit PDO in the CANopen side, and to indicate which bytes are associated to these PDO.

It is divided in two parts, the "Receive PDO" and the "Transmit PDO". The first part is used to receive PDO in the CANopen network and copy the data in the EtherNet/IP array. The second part is used to transmit PDO in the CANopen network with the data of EtherNet/IP array.

The data of the columns in the "Receive PDO" have the following meanings:

- In the Field "**Cob-ID**" the address for the PDO is defined;
- In the Field "**Dimension**" the dimension of the PDO is defined (it can be between 1 and 8);
- In the Field "**Add B1**" the first byte where the data will be saved in the EtherNet/IP array is defined;
- In the Field "**Add B2**" the second byte where the data will be saved in the EtherNet/IP array is defined (only if **Dimension** > 1);
- In the Field "**Add B3**" the third byte where the data will be saved in the EtherNet/IP array is defined (only if **Dimension** > 2);
- In the Field "**Add B4**" the fourth byte where the data will be saved in the EtherNet/IP array is defined (only if **Dimension** > 3);
- In the Field "**Add B5**" the fifth byte where the data will be saved in the EtherNet/IP array is defined (only if **Dimension** > 4);
- In the Field "**Add B6**" the sixth byte where the data will be saved in the EtherNet/IP array is defined (only if **Dimension** > 5);
- In the Field "**Add B7**" the seventh byte where the data will be saved in the EtherNet/IP array is defined (only if **Dimension** > 6);
- In the Field "**Add B8**" the eighth byte where the data will be saved in the EtherNet/IP array is defined (only if **Dimension** > 7);
- The field "**TimeOut**" is used for put at zero the data into EtherNet/IP if the PDO doesn't arrive with a frequency less than the time expressed in the field. If the value in the field is 0, it means that you don't want to use this feature, and so the value is never deleted;
- In the field "**Mnemonic**" the description for the PDO is defined.

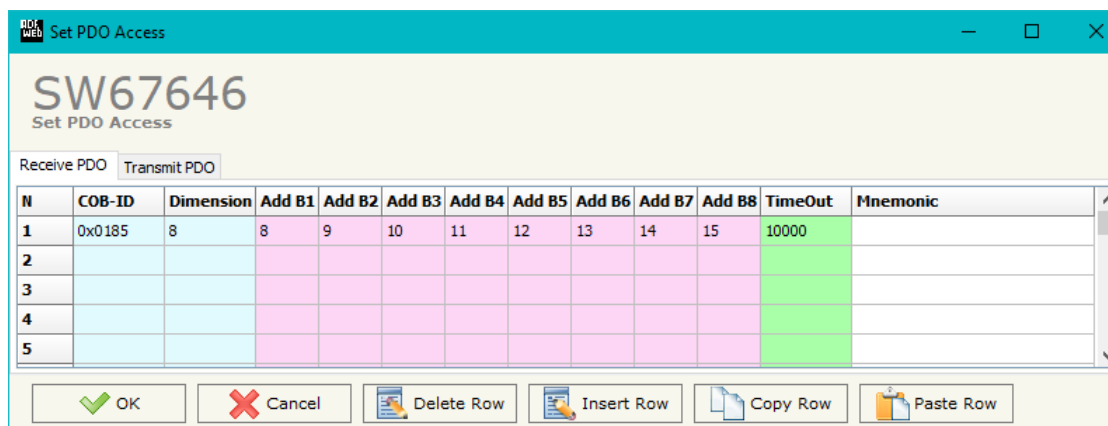


Figure 7a: "Set PDO Access – Receive PDO" window

The data of the columns in the "Transmit PDO" have the following meanings:

- In the Field "**Cob-ID**" the address for the PDO is defined;
- In the Field "**Dimension**" the dimension of the PDO is defined (it can be between 1 and 8);
- In the Field "**Add B1**" the first byte where the data will be loaded in the EtherNet/IP array is defined;
- In the Field "**Add B2**" the second byte where the data will be loaded in the EtherNet/IP array is defined (only if **Dimension** > 1);
- In the Field "**Add B3**" the third byte where the data will be loaded in the EtherNet/IP array is defined (only if **Dimension** > 2);
- In the Field "**Add B4**" the fourth byte where the data will be loaded in the EtherNet/IP array is defined (only if **Dimension** > 3);
- In the Field "**Add B5**" the fifth byte where the data will be loaded in the EtherNet/IP array is defined (only if **Dimension** > 4);
- In the Field "**Add B6**" the sixth byte where the data will be loaded in the EtherNet/IP array is defined (only if **Dimension** > 5);
- In the Field "**Add B7**" the seventh byte where the data will be loaded in the EtherNet/IP array is defined (only if **Dimension** > 6);
- In the Field "**Add B8**" the eighth byte where the data will be loaded in the EtherNet/IP array is defined (only if **Dimension** > 7);
- In the Field "**Send Time**" insert the interval used to send the PDO. The time is in milliseconds;
- If the field "**On Change**" is checked, the gateway send the Transmit PDO when the data change the value;
- In the field "**Mnemonic**" the description for the PDO is defined.

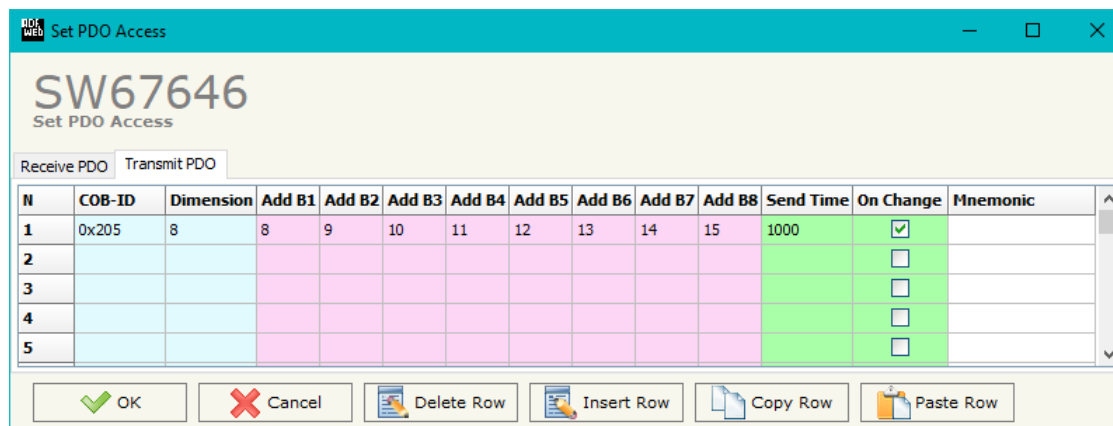


Figure 7b: "Set PDO Access – Transmit PDO" window

**EDS FILE:**

By Pressing the "**EDS FILE**" button from the main window for SW67646 (Fig. 2) it is possible to generate the EDS file to be imported into the master CANopen.

### UPDATE DEVICE:

By pressing the **“Update Device”** button, it is possible to load the created Configuration into the device; and also the Firmware, if necessary. This by using the Ethernet port.

If you don't know the actual IP address of the device you have to use this procedure:

- Turn OFF the Device;
- Put Dip2 of 'Dip-Switch A' in ON position;
- Turn ON the device
- Connect the Ethernet cable;
- Insert the IP **“192.168.2.205”**;
- Select which operations you want to do;
- Press the **“Execute update firmware”** button to start the upload;
- When all the operations are “OK” turn OFF the Device;
- Put Dip2 of 'Dip-Switch A' in OFF position;
- Turn ON the device.

If you know the actual IP address of the device, you have to use this procedure:

- Turn ON the Device with the Ethernet cable inserted;
- Insert the actual IP of the Converter;
- Select which operations you want to do;
- Press the **“Execute update firmware”** button to start the upload;
- When all the operations are “OK” the device automatically goes at Normal Mode.

At this point the configuration/firmware on the device is correctly updated.

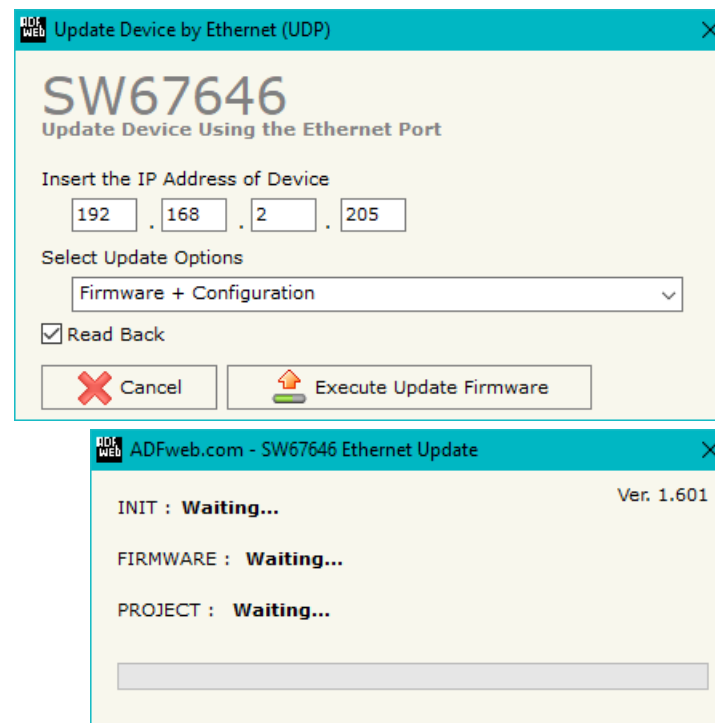


Figure 8: “Update device” windows

**Note:**

When you receive the device, for the first time, you also have to update the Firmware in the HD67646 device.

**Warning:**

If Fig. 9 appears when you try to do the Update try these points before seeking assistance:

- Try to repeat the operations for the updating;
- Try with another PC;
- Try to restart the PC;
- Check the LAN settings;
- If you are using the program inside a Virtual Machine, try to use in the main Operating System;
- If you are using Windows Seven, Vista, 8 or 10 make sure that you have the administrator privileges;
- In case you have to program more than one device, using the "UDP Update", you have to cancel the ARP table every time you connect a new device on Ethernet. For do this you have to launch the "Command Prompt" and write the command "arp - d". Pay attention that with Windows Vista, Seven, 8, 10 you have to launch the "Command Prompt" with Administrator Rights;
- Pay attention at Firewall lock.

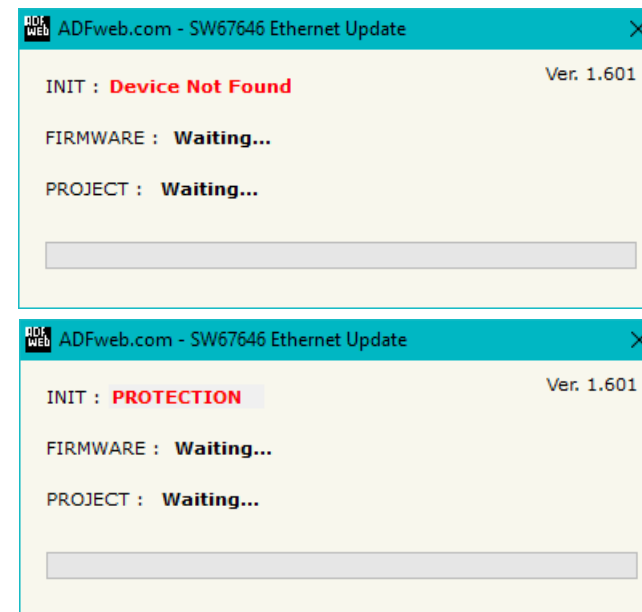


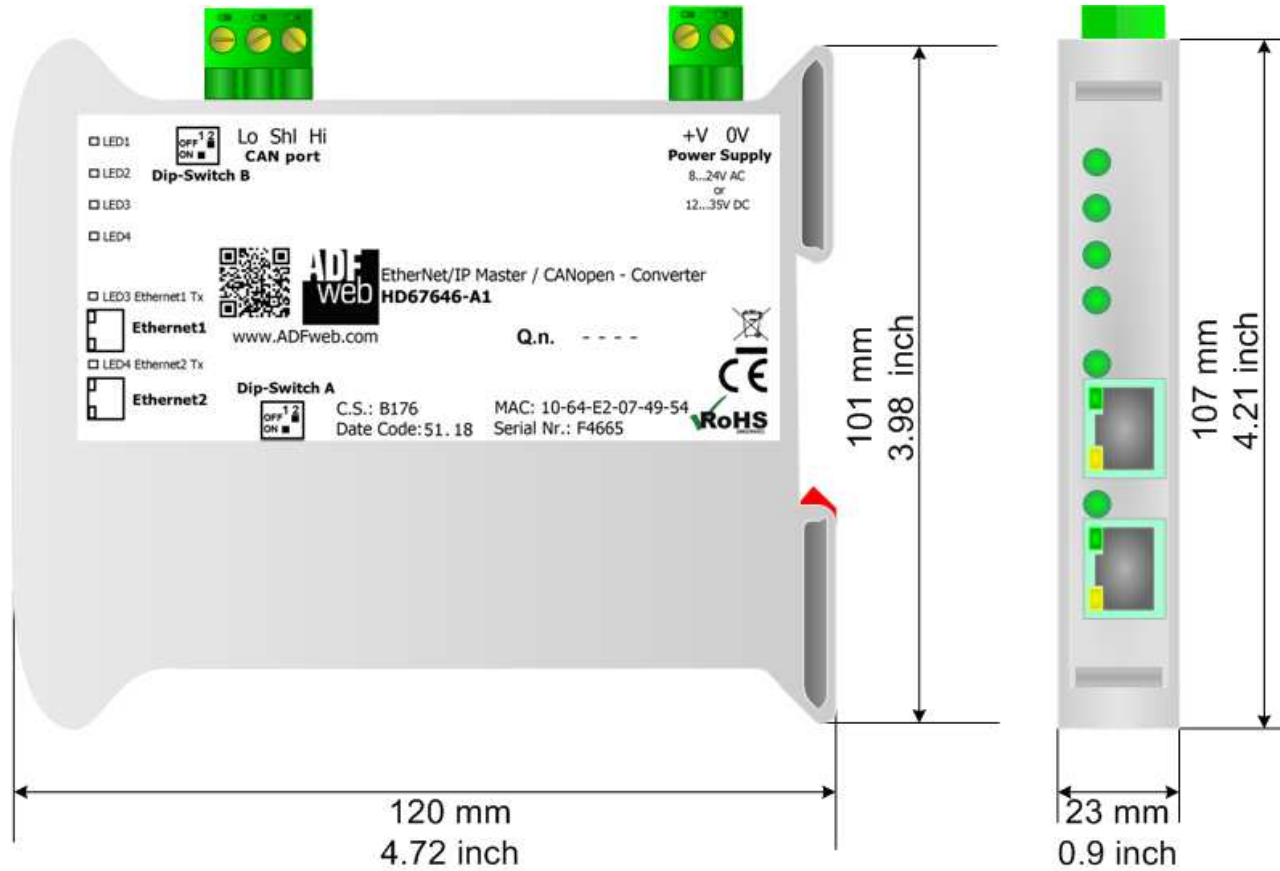
Figure 9: "Error" window

**Warning:**

In the case of HD67646 you have to use the software "SW67646": [www.adfweb.com/download/filefold/SW67646.zip](http://www.adfweb.com/download/filefold/SW67646.zip).



**MECHANICAL DIMENSIONS:**

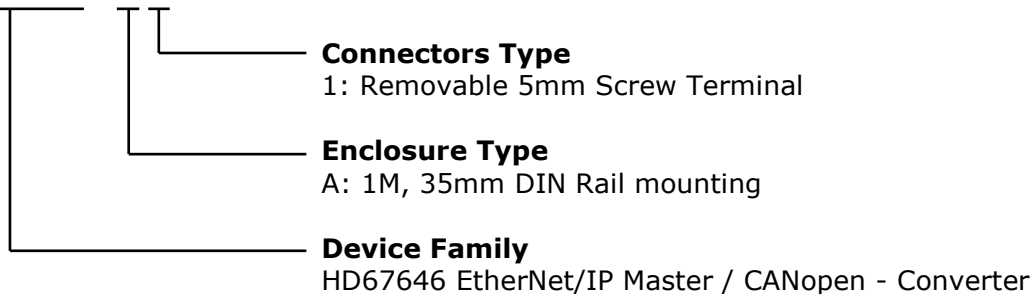


Housing: PVC  
 Weight: 200g (Approx)

Figure 10: Mechanical dimensions scheme for HD67646-A1

**ORDERING INFORMATIONS:**

The ordering part number is formed by a valid combination of the following:

**HD67646 - A 1**

Order Code: **HD67646-A1** - EtherNet/IP Master / CANopen - Converter

**ACCESSORIES:**

Order Code: **AC34011** - Rail DIN - Power Supply 220/240V AC 50/60Hz – 12 V DC

Order Code: **AC34012** - Rail DIN - Power Supply 220/240V AC 50/60Hz – 24 V DC

**DISCLAIMER:**

All technical content within this document can be modified without notice. The content of the document is a under continual renewal. For losses due to fire, earthquake, third party access or other accidents, or intentional or accidental abuse, misuse, or use under abnormal conditions repairs are charged to the user. ADFweb.com S.r.l. will not be liable for accidental loss of use or inability to use this product, such as loss of business income. ADFweb.com S.r.l. shall not be liable for consequences of improper use.

**OTHER REGULATIONS AND STANDARDS:****WEEE INFORMATION**

Disposal of old electrical and electronic equipment (as in the European Union and other European countries with separate collection systems).

— This symbol on the product or on its packaging indicates that this product may not be treated as household rubbish. Instead, it should be taken to an applicable collection point for the recycling of electrical and electronic equipment. If the product is disposed correctly, you will help prevent potential negative environmental factors and impact of human health, which could otherwise be caused by inappropriate disposal. The recycling of materials will help to conserve natural resources. For more information about recycling this product, please contact your local city office, your household waste disposal service or the shop where you purchased the product.

**RESTRICTION OF HAZARDOUS SUBSTANCES DIRECTIVE**

The device respects the 2002/95/EC Directive on the restriction of the use of certain hazardous substances in electrical and electronic equipment (commonly referred to as Restriction of Hazardous Substances Directive or RoHS).

**CE MARKING**

The product conforms with the essential requirements of the applicable EC directives.

### **WARRANTIES AND TECHNICAL SUPPORT:**

For fast and easy technical support for your ADFweb.com SRL products, consult our internet support at [www.adfweb.com](http://www.adfweb.com). Otherwise contact us at the address [support@adfweb.com](mailto:support@adfweb.com)

### **RETURN POLICY:**

If while using your product you have any problem and you wish to exchange or repair it, please do the following:

- Obtain a Product Return Number (PRN) from our internet support at [www.adfweb.com](http://www.adfweb.com). Together with the request, you need to provide detailed information about the problem.
- Send the product to the address provided with the PRN, having prepaid the shipping costs (shipment costs billed to us will not be accepted).

If the product is within the warranty of twelve months, it will be repaired or exchanged and returned within three weeks. If the product is no longer under warranty, you will receive a repair estimate.



**ADFweb.com S.r.l.**  
 Via Strada Nuova, 17  
 IT-31010 Mareno di Piave  
 TREVISO (Italy)  
 Phone +39.0438.30.91.31  
 Fax +39.0438.49.20.99  
[www.adfweb.com](http://www.adfweb.com)

