

# User Manual

Revision 1.001  
English

## OPC UA Client / Serial - Converter

(Order Code: HD67B08-2-B2, HD67B08-5-B2)

for Website information:

[www.adfweb.com/?Product=HD67B08](http://www.adfweb.com/?Product=HD67B08)

for Price information:

[www.adfweb.com/?Price=HD67B08-2-B2](http://www.adfweb.com/?Price=HD67B08-2-B2)

[www.adfweb.com/?Price=HD67B08-5-B2](http://www.adfweb.com/?Price=HD67B08-5-B2)

### Benefits and Main Features:

- ⚡ Triple electrical isolation
- ⚡ Power Supply 18...35V DC and 8...24 V AC
- ⚡ Temperature range: -40°C/+85°C (-40°F/+185°F)



User Manual

For others OPC UA Client devices, see also the following links:

#### OPC UA Client from/to ...

- |  |                            |
|--|----------------------------|
| <a href="http://www.adfweb.com?Product=HD67B09">www.adfweb.com?Product=HD67B09</a> | <b>(Modbus Slave)</b>      |
| <a href="http://www.adfweb.com?Product=HD67B10">www.adfweb.com?Product=HD67B10</a> | <b>(Modbus TCP Slave)</b>  |
| <a href="http://www.adfweb.com?Product=HD67B11">www.adfweb.com?Product=HD67B11</a> | <b>(Bacnet Slave)</b>      |
| <a href="http://www.adfweb.com?Product=HD67B12">www.adfweb.com?Product=HD67B12</a> | <b>(CAN)</b>               |
| <a href="http://www.adfweb.com?Product=HD67B13">www.adfweb.com?Product=HD67B13</a> | <b>(CANopen)</b>           |
| <a href="http://www.adfweb.com?Product=HD67B14">www.adfweb.com?Product=HD67B14</a> | <b>(DeviceNet Slave)</b>   |
| <a href="http://www.adfweb.com?Product=HD67B15">www.adfweb.com?Product=HD67B15</a> | <b>(DMX)</b>               |
| <a href="http://www.adfweb.com?Product=HD67B16">www.adfweb.com?Product=HD67B16</a> | <b>(EtherNet/IP Slave)</b> |
| <a href="http://www.adfweb.com?Product=HD67B17">www.adfweb.com?Product=HD67B17</a> | <b>(J1939)</b>             |
| <a href="http://www.adfweb.com?Product=HD67B18">www.adfweb.com?Product=HD67B18</a> | <b>(KNX)</b>               |
| <a href="http://www.adfweb.com?Product=HD67B19">www.adfweb.com?Product=HD67B19</a> | <b>(MQTT)</b>              |
| <a href="http://www.adfweb.com?Product=HD67B20">www.adfweb.com?Product=HD67B20</a> | <b>(NMEA0183)</b>          |
| <a href="http://www.adfweb.com?Product=HD67B21">www.adfweb.com?Product=HD67B21</a> | <b>(NMEA2000)</b>          |
| <a href="http://www.adfweb.com?Product=HD67B22">www.adfweb.com?Product=HD67B22</a> | <b>(PROFINET)</b>          |
| <a href="http://www.adfweb.com?Product=HD67B23">www.adfweb.com?Product=HD67B23</a> | <b>(SNMP Agent)</b>        |

Do you have an your customer protocol?

See the following links:

[www.adfweb.com?Product=HD67003](http://www.adfweb.com?Product=HD67003)

Do you need to choose a device? do you want help?

Ask it to the following link:

[www.adfweb.com?Cmd=helpme](http://www.adfweb.com?Cmd=helpme)

**INDEX:**

	Page
INDEX	2
UPDATED DOCUMENTATION	2
REVISION LIST	2
WARNING	2
TRADEMARKS	2
SECURITY ALERT	3
EXAMPLE OF CONNECTION	4
CONNECTION SCHEME	5
CHARACTERISTICS	7
CONFIGURATION	7
POWER SUPPLY	8
FUNCTION MODES	9
LEDS	10
RS232	11
RS485	12
ETHERNET	13
USE OF COMPOSITOR SW67B08	14
NEW PROJECT / OPEN PROJECT	15
SOFTWARE OPTIONS	16
SET COMMUNICATION	18
OPC UA ACCESS	19
UPDATE DEVICE	25
SERIAL PROTOCOL	27
MECHANICAL DIMENSIONS	30
ORDERING INFORMATIONS	31
ACCESSORIES	31
DISCLAIMER	32
OTHER REGULATIONS AND STANDARDS	32
WARRANTIES AND TECHNICAL SUPPORT	33
RETURN POLICY	33

**UPDATED DOCUMENTATION:**

Dear customer, we thank you for your attention and we remind you that you need to check that the following document is:

- Updated
- Related to the product you own

To obtain the most recently updated document, note the “document code” that appears at the top right-hand corner of each page of this document.

With this “Document Code” go to web page [www.adfweb.com/download/](http://www.adfweb.com/download/) and search for the corresponding code on the page. Click on the proper “Document Code” and download the updates.

**REVISION LIST:**

Revision	Date	Author	Chapter	Description
1.000	13/03/2019	Tf	All	First release version
1.001	05/05/2020	Ff	All	Revision

**WARNING:**

ADFweb.com reserves the right to change information in this manual about our product without warning.  
ADFweb.com is not responsible for any error this manual may contain.

**TRADEMARKS:**

All trademarks mentioned in this document belong to their respective owners.

**SECURITY ALERT:****GENERAL INFORMATION**

To ensure safe operation, the device must be operated according to the instructions in the manual. When using the device, legal and safety regulation are required for each individual application. The same applies also when using accessories.

**INTENDED USE**

Machines and systems must be designed so the faulty conditions do not lead to a dangerous situation for the operator (i.e. independent limit switches, mechanical interlocks, etc.).

**QUALIFIED PERSONNEL**

The device can be used only by qualified personnel, strictly in accordance with the specifications.

Qualified personnel are persons who are familiar with the installation, assembly, commissioning and operation of this equipment and who have appropriate qualifications for their job.

**RESIDUAL RISKS**

The device is state-of-the-art and is safe. The instruments can represent a potential hazard if they are inappropriately installed and operated by untrained personnel. These instructions refer to residual risks with the following symbol:

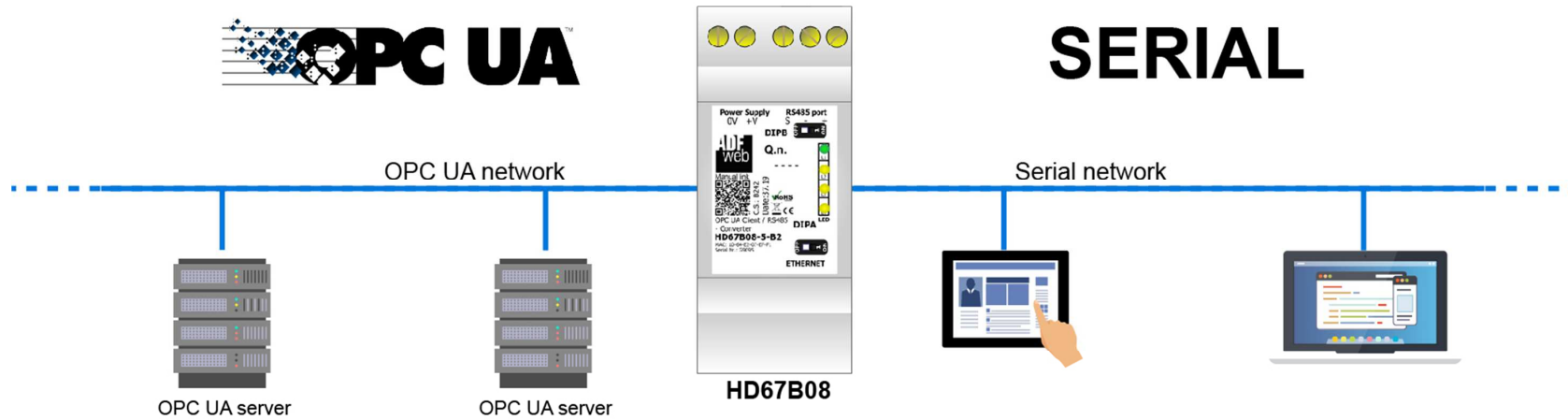


This symbol indicates that non-observance of the safety instructions is a danger for people that could lead to serious injury or death and / or the possibility of damage.

**CE CONFORMITY**

The declaration is made by our company. You can send an email to [support@adfweb.com](mailto:support@adfweb.com) or give us a call if you need it.

**EXAMPLE OF CONNECTION:**



**ADFweb.com**  
 Tel. +39 0438 309 131 - Fax +39 0438 492 099  
 info@adfweb-com - www.adfweb.com

**CONNECTION SCHEME:**

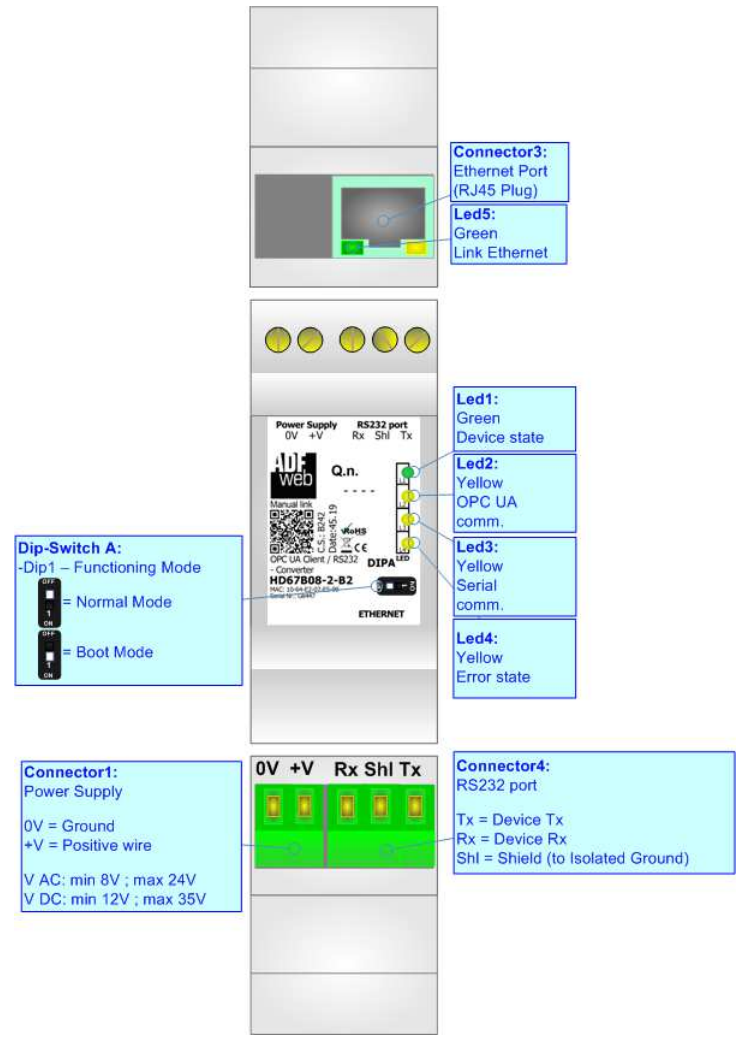


Figure 1a: Connection scheme for HD67B08-2-B2

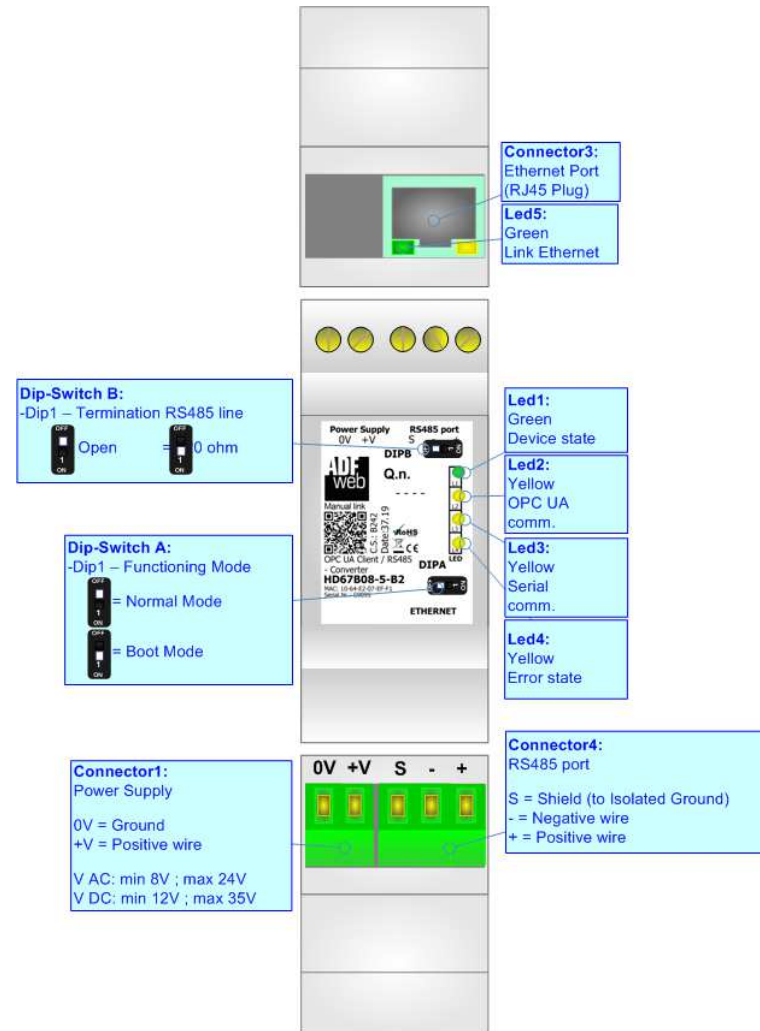


Figure 1b: Connection scheme for HD67B08-5-B2

**CHARACTERISTICS:**

The HD67B08-B2 is a OPC UA Client / Serial converter.

It allows the following characteristics:

- ➔ Up to 1500 bytes in reading and 1500 bytes in writing;
- ➔ Two-directional information between Serial and OPC UA;
- ➔ Mountable on 35mm Rail DIN;
- ➔ Wide power supply input range: 8...24V AC or 12...35V DC;
- ➔ Wide temperature range: -40°C / 85°C [-40°F / +185°F].

**CONFIGURATION:**

You need Compositor SW67B08 software on your PC in order to perform the following:

- ➔ Define the parameter of the OPC UA;
- ➔ Define the parameter of the Serial;
- ➔ Define the list of OPC UA servers connected to the converter;
- ➔ Update the device.

**POWER SUPPLY:**

The devices can be powered between a wide range of tensions. For more details see the two tables below.

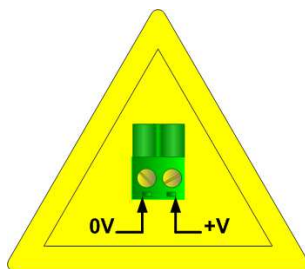
	VAC		VDC	
	Vmin	Vmax	Vmin	Vmax
<b>HD67B08-x-B2</b>	<b>8V</b>	<b>24V</b>	<b>12V</b>	<b>35V</b>

Consumption at 24V DC:

Device	W/VA
HD67B08-x-B2	4



**Caution: Not reverse the polarity power**



HD67B08-x-B2



**Connector1:**  
 Power Supply  
 0V = Ground  
 +V = Positive wire  
 V AC: min 8V ; max 24V  
 V DC: min 12V ; max 35V



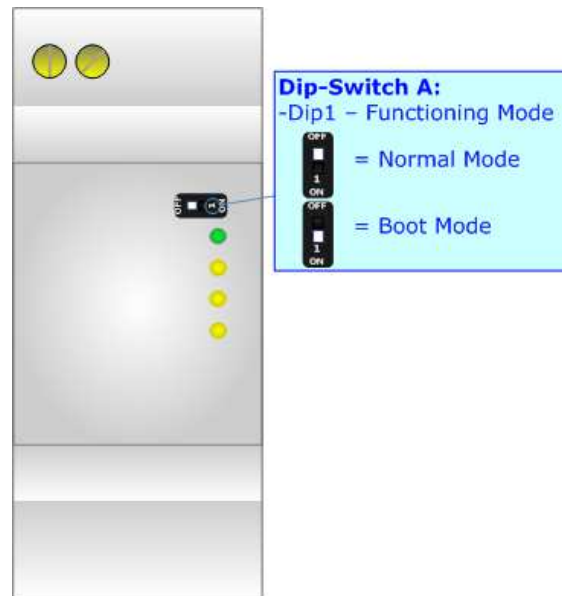
**FUNCTION MODES:**

The device has got two functions mode depending of the position of the Dip1 of 'Dip-Switch A':

- The first, with Dip1 in Off position (factory setting), is used for the normal working of the device.
- The second, with Dip1 in On position, is used for upload the Project/Firmware.

For the operations to follow for the updating (see 'UPDATE DEVICE' section).

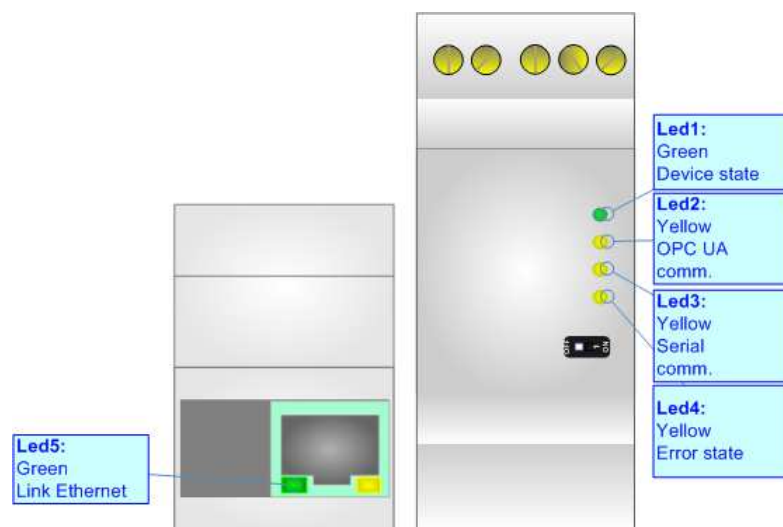
According to the functioning mode, the LEDs will have specifics functions (see 'LEDS' section).



**LEDS:**

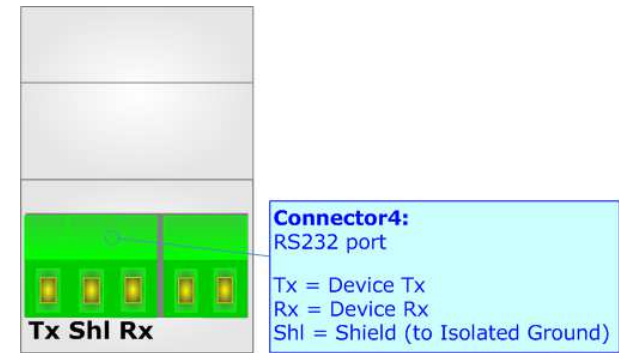
The device has got six LEDs that are used to give information of the functioning status. The various meanings of the LEDs are described in the table below.

LED	Normal Mode	Boot Mode
1: Device State (green)	Blinks slowly (~1Hz)	<b>Blinks quickly:</b> Boot state <b>Blinks very slowly (~0.5Hz):</b> update in progress
2: OPC UA comm. (yellow)	<b>Flashing:</b> OPC UA response <b>OFF:</b> No OPC UA response	<b>Blinks quickly:</b> Boot state <b>Blinks very slowly (~0.5Hz):</b> update in progress
3: Serial comm. (yellow)	<b>Flashing:</b> Serial request <b>OFF:</b> No Serial request	<b>Blinks quickly:</b> Boot state <b>Blinks very slowly (~0.5Hz):</b> update in progress
4: Error state (yellow)	<b>ON:</b> At least one OPC UA Server is disconnected <b>OFF:</b> all OPC UA Servers are connected	<b>Blinks quickly:</b> Boot state <b>Blinks very slowly (~0.5Hz):</b> update in progress
5: Link Ethernet (green)	<b>ON:</b> Ethernet cable connected <b>OFF:</b> Ethernet cable disconnected	<b>ON:</b> Ethernet cable connected <b>OFF:</b> Ethernet cable disconnected



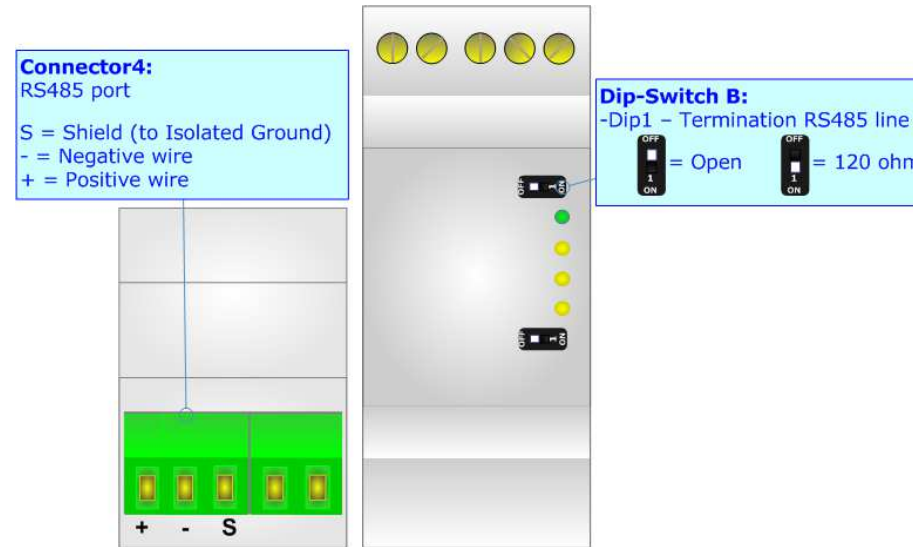
**RS232:**

The connection from RS232 socket to a serial port (example one from a personal computer) must be made with a Null Modem cable (a serial cable where the pins 2 and 3 are crossed). It is recommended that the RS232 cable not exceed 15 meters.



**RS485:**

For terminate the RS485 line with a 120Ω resistor it is necessary to put ON dip 1, like in figure.



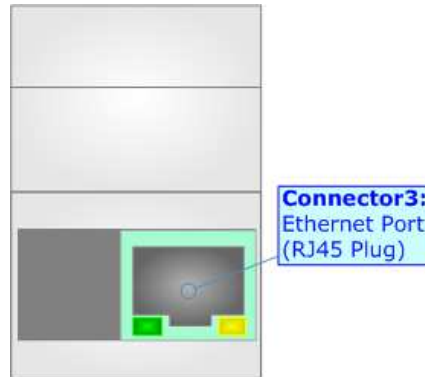
The maximum length of the cable should be 1200m (4000 feet).

Here some codes of cables:

- Belden: p/n 8132 - 2x 28AWG stranded twisted pairs conductor + foil shield + braid shield;
- Belden p/n 82842 - 2x 24AWG stranded twisted pairs conductor + foil shield + braid shield;
- Tasker: p/n C521 - 1x 24AWG twisted pair conductor + foil shield + braid shield;
- Tasker: p/n C522 - 2x 24AWG twisted pairs conductor + foil shield + braid shield.

**ETHERNET:**

The Ethernet connection must be made using Connector3 of HD67B08-x-B2 with at least a Category 5E cable. The maximum length of the cable should not exceed 100m. The cable has to conform to the T568 norms relative to connections in cat.5 up to 100 Mbps. To connect the device to an Hub/Switch is recommended the use of a straight cable, to connect the device to a PC/PLC/other is recommended the use of a cross cable.



**USE OF COMPOSITOR SW67B08:**

To configure the Converter, use the available software that runs with Windows called SW67B08. It is downloadable on the site [www.adfweb.com](http://www.adfweb.com) and its operation is described in this document. *(This manual is referenced to the last version of the software present on our web site)*. The software works with MSWindows (XP, Vista, Seven, 8, 10; 32/64bit).

When launching the SW67B08, the window below appears (Fig. 2).


 **Note:**  
It is necessary to have installed .Net Framework 4.



Figure 2: Main window for SW67B08

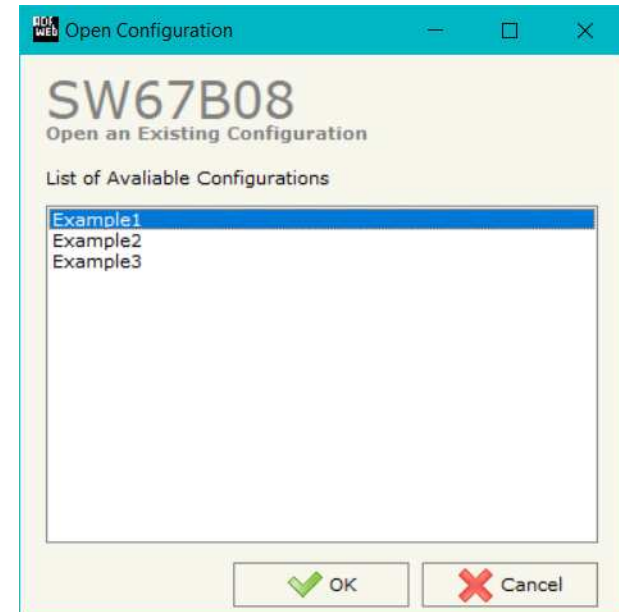
**NEW CONFIGURATION / OPEN CONFIGURATION:**

The “**New Configuration**” button creates the folder which contains the entire device’s configuration.




A device’s configuration can also be imported or exported:

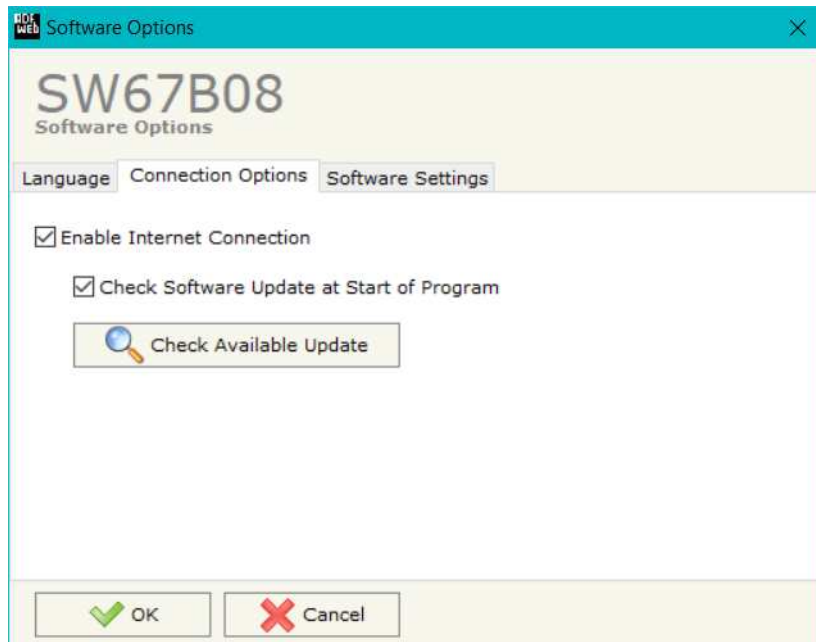
- To clone the configurations of a programmable “OPC UA Client / Serial - Converter” in order to configure another device in the same manner, it is necessary to maintain the folder and all its contents;
- To clone a project in order to obtain a different version of the project, it is sufficient to duplicate the project folder with another name and open the new folder with the button “**Open Configuration**”.



**SOFTWARE OPTIONS:**

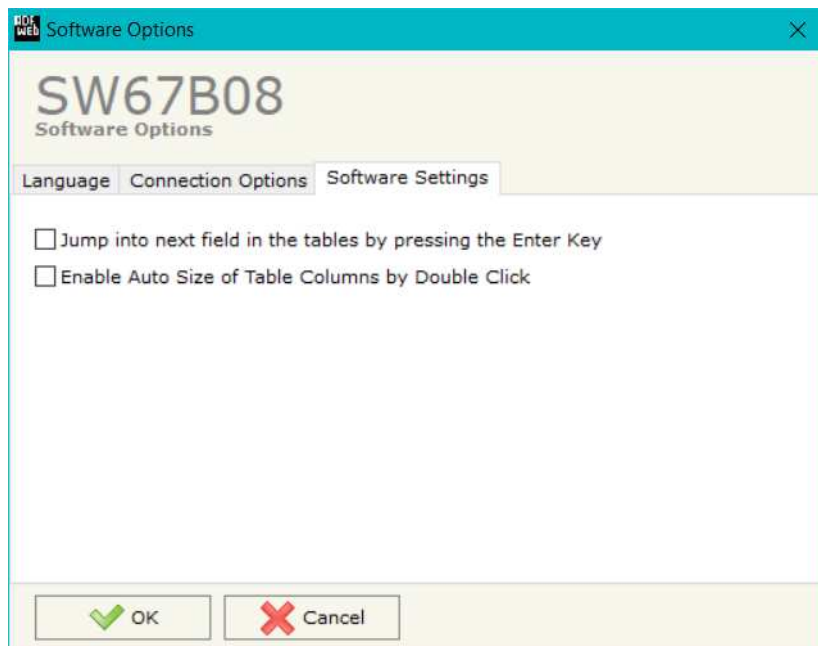
By pressing the “**Settings**” () button there is the possibility to change the language of the software and check the updates for the compositor.

In the section “Language” it is possible to change the language of the software.



In the section “Connection Options”, it is possible to check if there are some updates of the software compositor in ADFweb.com website. Checking the option “**Check Software Update at Start of Program**”, the SW67B08 check automatically if there are updates when it is launched.





In the section "Software Settings", it is possible to enable/disable some keyboard's commands for an easier navigation inside the tables contained in the different sections of the software.

## SET COMMUNICATION:

This section define the fundamental communication parameters of two buses, OPC UA and Serial.

By Pressing the **"Set Communication"** button from the main window for SW67B08 (Fig. 2) the window "Set Communication" appears (Fig. 3).

The means of the fields for "OPC UA Client" are:

- In the field **"IP Address"** the IP address for OPC UA side of the converter is defined;
- In the field **"SubNet Mask"** the SubNet Mask for OPC UA side of the converter is defined;
- In the field **"Gateway"** the default gateway of the net is defined. This feature can be enabled or disabled pressing the Check Box field. This feature is used for going out of the net;
- In the field **"DNS"** the IP Address of the DNS server is defined. This feature can be enabled or disabled pressing the Check Box field.

The means of the fields for "Serial" are:

- In the field **"Serial"** the serial line to use for serial communication is defined;
- In the field **"Baudrate"** the baudrate for the serial line is defined;
- In the field **"Parity"** the parity of the serial line is defined;
- In the field **"Stop Bits"** the number of Stop Bits is defined.

The means of the fields for "NTP (Network Time Protocol)" are:

- In the field **"Server URL"** the URL or the IP Address of the NTP Server is defined;
- In the field **"Poll Time (seconds)"** the polling time for the time synchronization is defined.

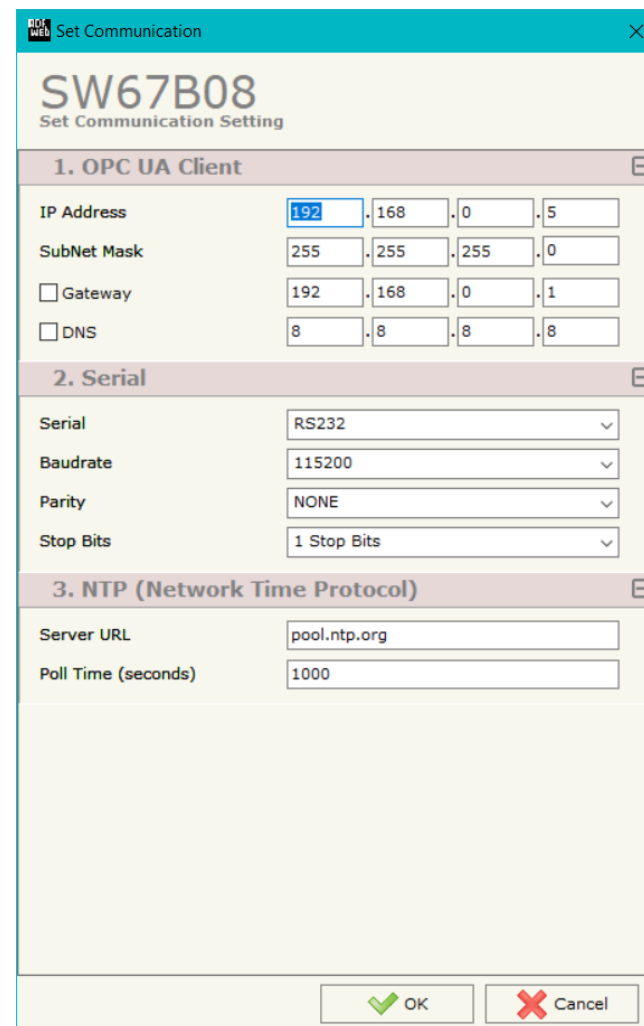


Figure 3: "Set Communication" window

**OPC UA ACCESS:**

By Pressing the “**OPC UA Client Access**” button from the main window for SW67B08 (Fig. 2) the window “OPC UA Client Access” appears (Fig. 4).

This section is used to define the list of the OPC UA Servers to read/write with the OPC UA Client.

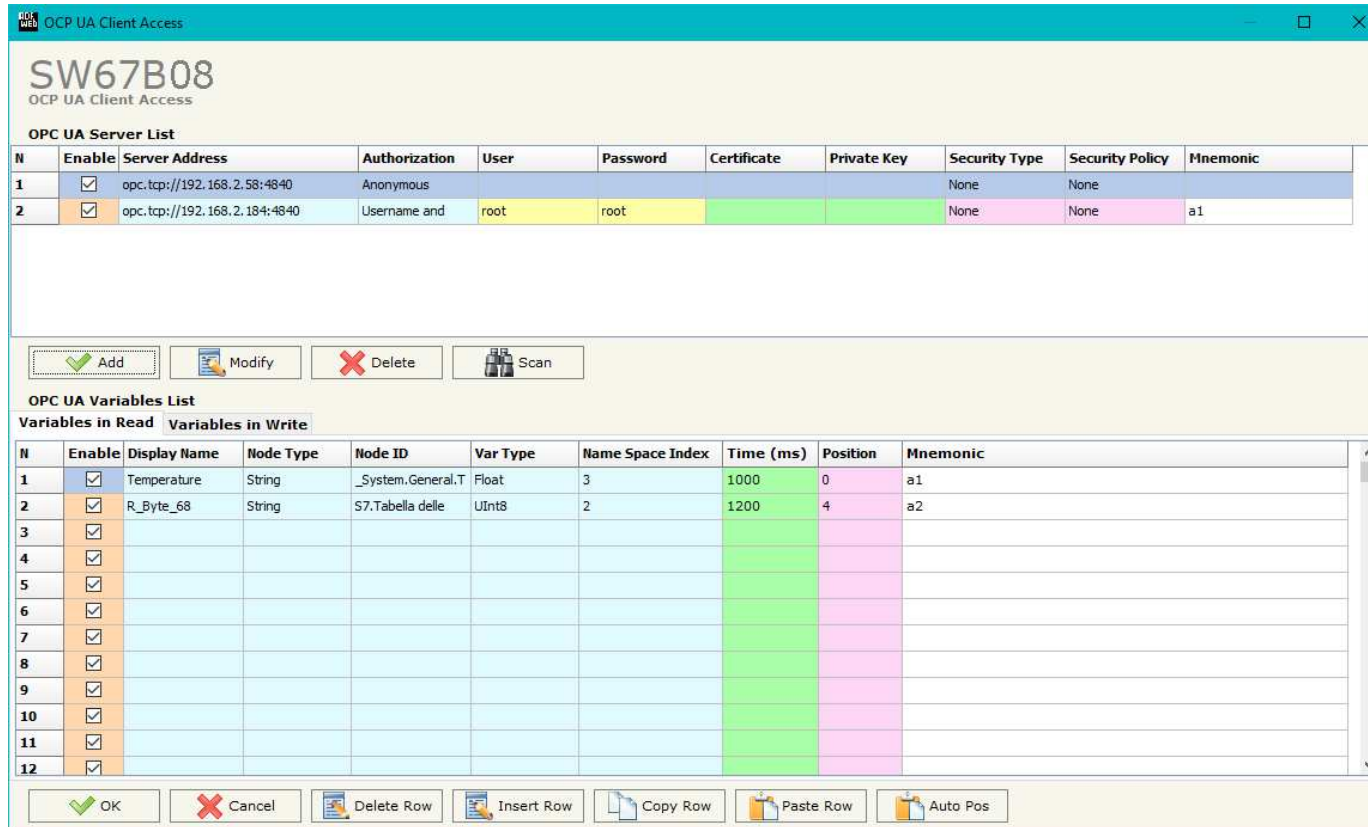



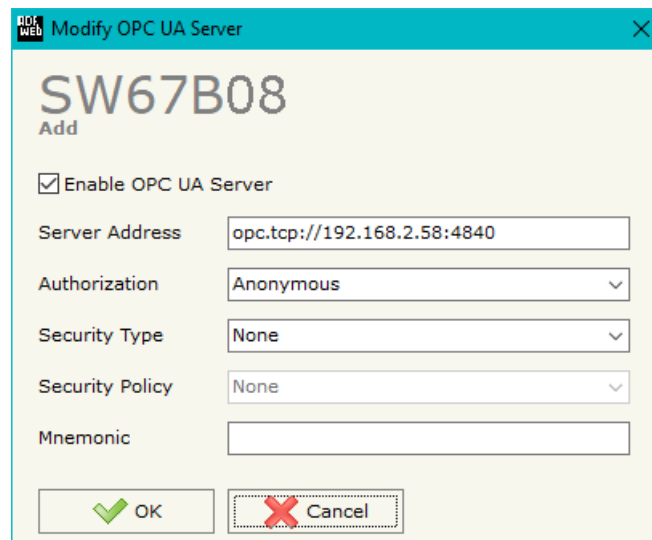
Figure 4: “OPC UA Client Access” window

By clicking on **"Add"**, it is possible to add a new OPC UA Server inserting its characteristics (Server Address, Authorization, Security Type...). The window "Add OPC UA Server" appears (Fig. 5). By clicking on **"Modify"**, it is possible to change these characteristics for the selected Server. The window "Modify OPC UA Server" appears (Fig. 6).



The screenshot shows a dialog box titled "Add OPC UA Server" with a close button (X) in the top right corner. The main content area has a light yellow background and features the identifier "SW67B08" and "OPC UA Client Access" at the top. Below this, there is a checked checkbox labeled "Enable OPC UA Server". The form includes several input fields: "Server Address" with the value "opc.tcp://192.168.2.58:4840", "Authorization" with a dropdown menu set to "Anonymous", "Security Type" with a dropdown menu set to "None", "Security Policy" with a dropdown menu set to "None", and an empty "Mnemonic" text field. At the bottom, there are two buttons: a green "OK" button with a checkmark icon and a red "Cancel" button with an X icon.

Figure 5: "Add OPC UA Server"



The screenshot shows a dialog box titled "Modify OPC UA Server" with a close button (X) in the top right corner. The main content area has a light yellow background and features the identifier "SW67B08" and "Add" at the top. Below this, there is a checked checkbox labeled "Enable OPC UA Server". The form includes several input fields: "Server Address" with the value "opc.tcp://192.168.2.58:4840", "Authorization" with a dropdown menu set to "Anonymous", "Security Type" with a dropdown menu set to "None", "Security Policy" with a dropdown menu set to "None", and an empty "Mnemonic" text field. At the bottom, there are two buttons: a green "OK" button with a checkmark icon and a red "Cancel" button with an X icon. The "Cancel" button is highlighted with a dashed border.

Figure 6: "Modify OPC UA Server"

By clicking on “**Scan**”, it is possible to get the list of available variables from the selected Server. The window “Scan Server OPC UA” appears (Fig. 7).

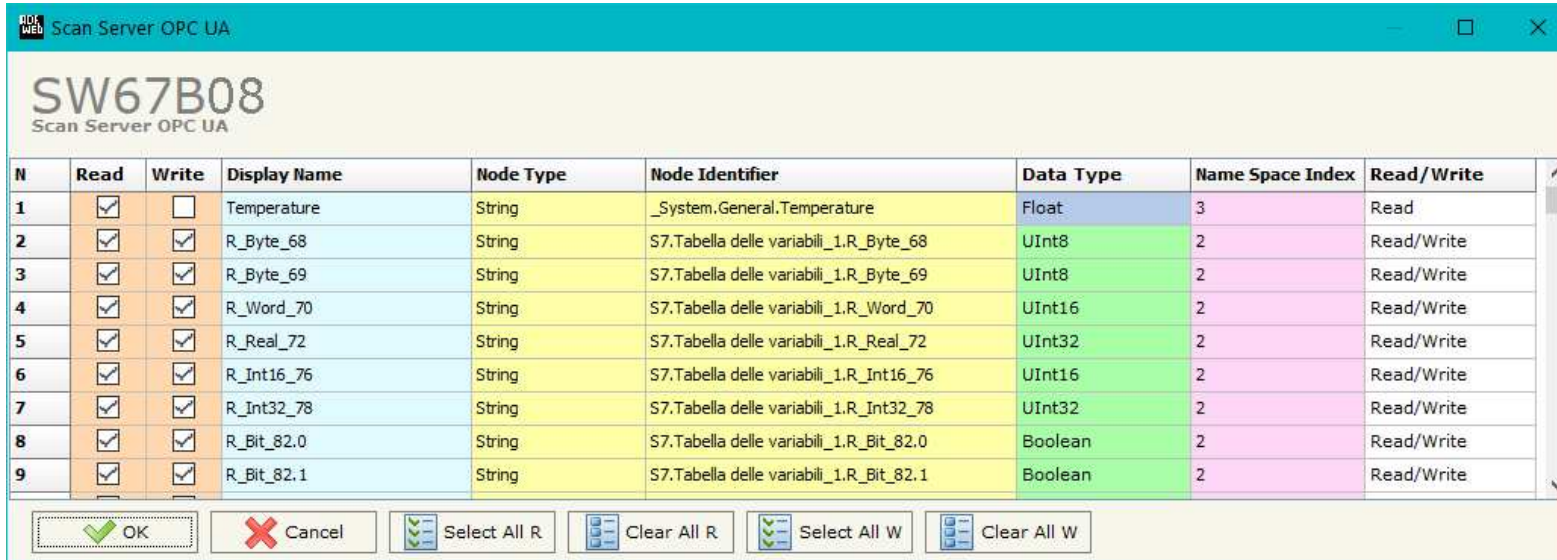


Figure 7: “Scan Server OPC UA” window

The means of the checkboxes inside the table are:

- If the field “**Read**” is checked, the variable can be read;
- If the field “**Write**” is checked, the variable can be written.



**Note:**

For each variable, it is possible to uncheck these fields and the variable will not be used in read/write.

After the scan, the selected variables will appear in “Variables in Read” and/or “Variables in Write” sections, in the lower part of the window “OPC UA Client Access” (Fig. 4).

The “Variables in Read” section is used to define the OPC UA variables to read from Serial side (Fig. 8).

OPC UA Variables List									
Variables in Read Variables in Write									
N	Enable	Display Name	Node Type	Node ID	Var Type	Name Space Index	Time (ms)	Position	Mnemonic
1	<input checked="" type="checkbox"/>	Temperature	String	_System.General.T	Float	3	1000	0	
2	<input checked="" type="checkbox"/>	R_Byte_68	String	S7.Tabella delle	UInt8	2	2000	4	
3	<input checked="" type="checkbox"/>	R_Byte_69	String	S7.Tabella delle	UInt8	2	2000	5	
4	<input checked="" type="checkbox"/>	R_Word_70	String	S7.Tabella delle	UInt16	2	2000	6	
5	<input checked="" type="checkbox"/>	R_Real_72	String	S7.Tabella delle	UInt32	2	2000	8	
6	<input checked="" type="checkbox"/>	R_Int16_76	String	S7.Tabella delle	UInt16	2	2000	12	
7	<input checked="" type="checkbox"/>	R_Int32_78	String	S7.Tabella delle	UInt32	2	2000	14	
8	<input checked="" type="checkbox"/>	R_Bit_82.0	String	S7.Tabella delle	Boolean	2	2000	18	
9	<input checked="" type="checkbox"/>	R_Bit_82.1	String	S7.Tabella delle	Boolean	2	2000	19	
10	<input checked="" type="checkbox"/>	R_Bit_82.2	String	S7.Tabella delle	Boolean	2	2000	20	
11	<input checked="" type="checkbox"/>	R_Bit_82.3	String	S7.Tabella delle	Boolean	2	2000	21	

Figure 8: “Variables in Read” section

The means of the fields are:

- If the field “**Enable**” is checked, the OPC UA variable is enabled;
- In the field “**Display name**” the name of the OPC UA variable is defined;
- In the field “**Node Type**” the type of the OPC UA node, which includes the variable, is defined;
- In the field “**Node ID**” the name of the OPC UA node, which includes the variable, is defined;
- In the field “**Var Type**” the data format of the OPC UA variable is defined;
- In the field “**Name Space Index**” the Name Space Index of the node, which includes the variable, is defined;
- In the field “**Time (ms)**” the delay in ms between two readings of the variable is defined;
- In the field “**Position**” the starting byte of the internal memory arrays where saving the value is defined;
- In the field “**Mnemonic**” a description of the variable is defined.

The “Variables in Write” section is used to define the OPC UA variables to write from Serial side (Fig. 9).

OPC UA Variables List												
Variables in Read												
Variables in Write												
N	Enable	Display Name	Node Type	Node ID	Var Type	Name Space Index	On Change	On CMD	On Timer	Time (ms)	Position	Mnemonic
1	<input checked="" type="checkbox"/>	R_Byte_68	String	S7.Tabella delle	UInt8	2	<input checked="" type="checkbox"/>	<input type="checkbox"/>	<input type="checkbox"/>	0	0	
2	<input checked="" type="checkbox"/>	R_Byte_69	String	S7.Tabella delle	UInt8	2	<input checked="" type="checkbox"/>	<input type="checkbox"/>	<input type="checkbox"/>	0	1	
3	<input checked="" type="checkbox"/>	R_Word_70	String	S7.Tabella delle	UInt16	2	<input checked="" type="checkbox"/>	<input type="checkbox"/>	<input type="checkbox"/>	0	2	
4	<input checked="" type="checkbox"/>	R_Real_72	String	S7.Tabella delle	UInt32	2	<input checked="" type="checkbox"/>	<input type="checkbox"/>	<input type="checkbox"/>	0	4	
5	<input checked="" type="checkbox"/>	R_Int16_76	String	S7.Tabella delle	UInt16	2	<input checked="" type="checkbox"/>	<input type="checkbox"/>	<input type="checkbox"/>	0	8	
6	<input checked="" type="checkbox"/>	R_Int32_78	String	S7.Tabella delle	UInt32	2	<input checked="" type="checkbox"/>	<input type="checkbox"/>	<input type="checkbox"/>	0	10	
7	<input checked="" type="checkbox"/>	R_Bit_82.0	String	S7.Tabella delle	Boolean	2	<input checked="" type="checkbox"/>	<input type="checkbox"/>	<input type="checkbox"/>	0	14	
8	<input checked="" type="checkbox"/>	R_Bit_82.1	String	S7.Tabella delle	Boolean	2	<input checked="" type="checkbox"/>	<input type="checkbox"/>	<input type="checkbox"/>	0	15	
9	<input checked="" type="checkbox"/>	R_Bit_82.2	String	S7.Tabella delle	Boolean	2	<input checked="" type="checkbox"/>	<input type="checkbox"/>	<input type="checkbox"/>	0	16	
10	<input checked="" type="checkbox"/>	R_Bit_82.3	String	S7.Tabella delle	Boolean	2	<input checked="" type="checkbox"/>	<input type="checkbox"/>	<input type="checkbox"/>	0	17	
11	<input checked="" type="checkbox"/>	R_Bit_82.4	String	S7.Tabella delle	Boolean	2	<input checked="" type="checkbox"/>	<input type="checkbox"/>	<input type="checkbox"/>	0	18	


OK
  Cancel
  Delete Row
  Insert Row
  Copy Row
  Paste Row
  Auto Pos


Figure 9: “Variables in Write” section

In “Variables in Write” section (Fig. 8), the means of the fields are:

- If the field “**Enable**” is checked, the OPC UA variable is enabled;
- In the field “**Display name**” the name of the OPC UA variable is defined;
- In the field “**Node Type**” the type of the OPC UA node, which includes the variable, is defined;
- In the field “**Node ID**” the name of the OPC UA node, which includes the variable, is defined;
- In the field “**Var Type**” the data format of the OPC UA variable is defined;
- In the field “**Name Space Index**” the Name Space Index of the node, which includes the variable, is defined;
- If the field “**On Change**” is checked, the OPC UA variable is sent when the data on Serial changes the value;
- If the field “**On CMD**” is checked, the OPC UA variable is sent when a Serial request is received;
- If the field “**On Timer**” is checked, the OPC UA variable is sent cyclically;
- In the field “**Time (ms)**” the delay in ms between two writings of the variable is defined (if “On Timer” is checked);

- In the field "**Position**" the starting byte of the internal memory arrays where getting the value is defined;
- In the field "**Mnemonic**" a description of the variable is defined.

 Note:  
By clicking on "**Auto Pos**", the position of the internal memory arrays where saving/getting the value of variable is automatically calculated.

 Note:  
A variable can be added manually in "Variables in Read" and/or "Variables in Write" sections without scanning the OPC UA Server.



**UPDATE DEVICE:**

By pressing the **“Update Device”** button, it is possible to load the created Configuration into the device; and also the Firmware, if necessary. This by using the Ethernet port.

If you don't know the actual IP address of the device you have to use this procedure:

- Turn OFF the Device;
- Put Dip1 of 'Dip-Switch A' in ON position;
- Turn ON the device
- Connect the Ethernet cable;
- Insert the IP **“192.168.2.205”**;
- Select which operations you want to do;
- Press the **“Execute update firmware”** button to start the upload;
- When all the operations are “OK” turn OFF the Device;
- Put Dip1 of 'Dip-Switch A' in OFF position;
- Turn ON the device.

If you know the actual IP address of the device, you have to use this procedure:

- Turn ON the Device with the Ethernet cable inserted;
- Insert the actual IP of the Converter;
- Select which operations you want to do;
- Press the **“Execute update firmware”** button to start the upload;
- When all the operations are “OK” the device automatically goes at Normal Mode.

At this point the configuration/firmware on the device is correctly updated.

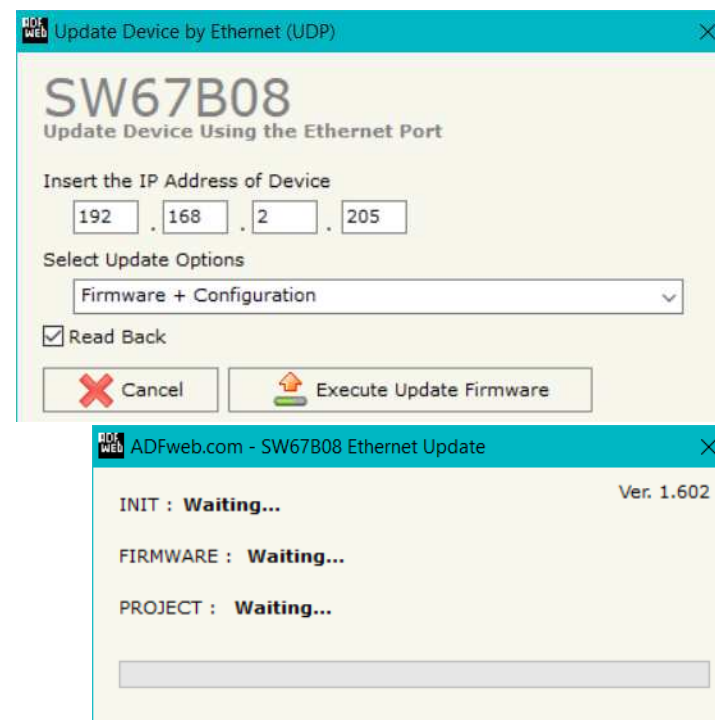


Figure 10: “Update device” windows



**Note:**

When you receive the device, for the first time, you also have to update the Firmware in the HD67B08 device.



**Warning:**

If Fig. 11 appears when you try to do the Update try these points before seeking assistance:

- Try to repeat the operations for the updating;
- Try with another PC;
- Try to restart the PC;
- Check the LAN settings;
- If you are using the program inside a Virtual Machine, try to use in the main Operating System;
- If you are using Windows Seven, Vista, 8 or 10 make sure that you have the administrator privileges;
- In case you have to program more than one device, using the "UDP Update", you have to cancel the ARP table every time you connect a new device on Ethernet. For do this you have to launch the "Command Prompt" and write the command "arp -d". Pay attention that with Windows Vista, Seven, 8, 10 you have to launch the "Command Prompt" with Administrator Rights;
- Pay attention at Firewall lock.

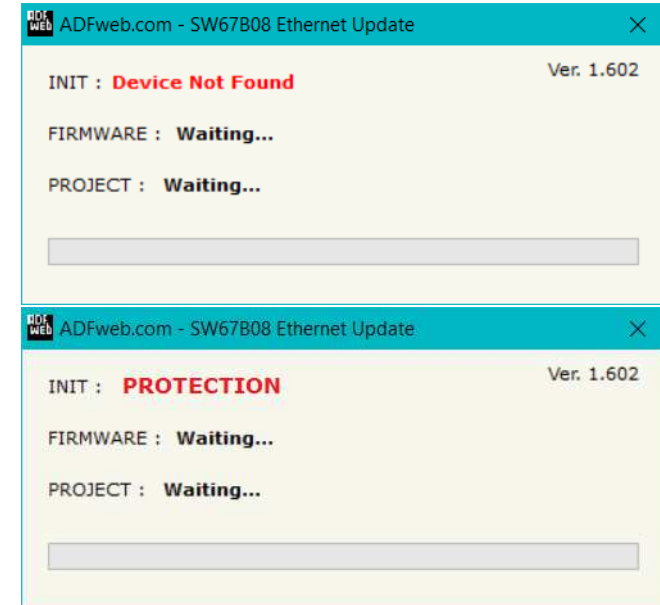


Figure 11: "Error" window



**Warning:**

In the case of HD67B08 you have to use the software "SW67B08": [www.adfweb.com/download/filefold/SW67B08.zip](http://www.adfweb.com/download/filefold/SW67B08.zip).

## **SERIAL PROTOCOL:**

In order to read and write the data from OPC UA side, it is enough to send some simple commands on Serial port.

### Reading data from HD67B08 (OPC UA → Serial)

Request structure:

*OPCUAR.servername&nodeidname*

where:

- *OPCUAR.* → Fixed part
- *Servername* → complete name of the server or url
- *&* → Fixed part
- *Nodeidname* → NodeID of OPC UA variable to read (string or numeric in relation to the type of variable)

Response structure:

*OPCUAR.servername&nodeidname=Value*

where:

- *OPCUAR.* → Fixed part
- *Servername* → complete name of the server or url read
- *&* → Fixed part
- *Nodeidname* → NodeID of OPC UA variable read (string or numeric in relation to the type of variable)
- *=* → Fixed part
- *Value* → Data read (in the variable's format)

Writing data to HD67B08 (Serial → OPC UA)

Request structure:

*OPCUAR.servername&nodeidname=Value*

where:

- *OPCUAR.* → Fixed part
- *Servername* → complete name of the server or url
- *&* → Fixed part
- *Nodeidname* → NodeID of OPC UA variable to write (string or numeric in relation to the type of variable)
- *=* → Fixed part
- *Value* → Data to write

Response structure:

*OPCUAR.servername&nodeidname=Value*

where:

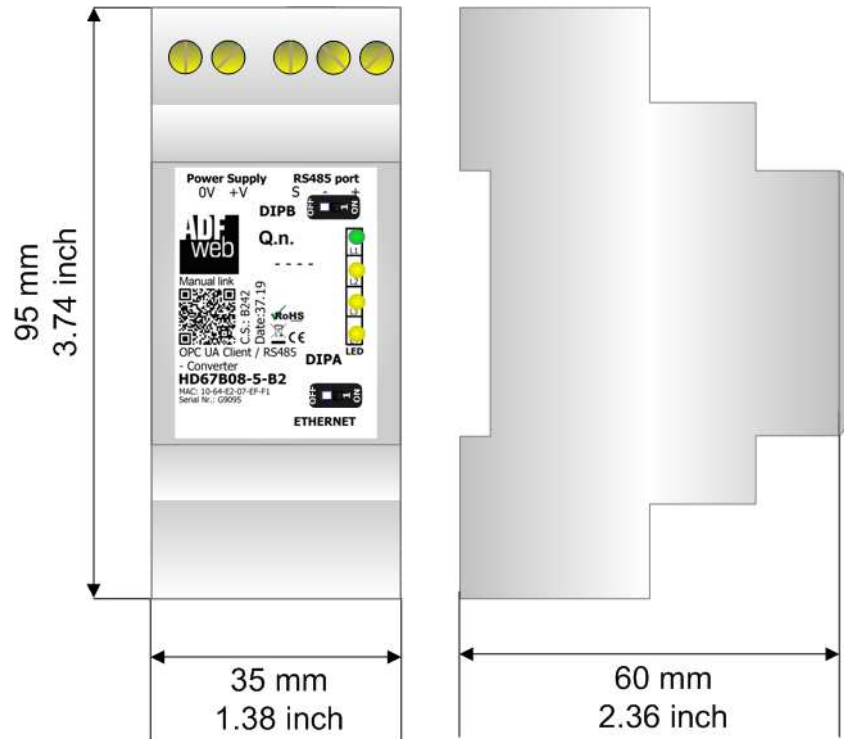
- *OPCUAR.* → Fixed part
- *Servername* → complete name of the server or url read
- *&* → Fixed part
- *Nodeidname* → NodeID of OPC UA variable read (string or numeric in relation to the type of variable)
- *=* → Fixed part
- *Value* → Data read (in the variable's format)

## Errors

On serial side, it is possible to have some errors in relation to the status of OPC UA side. The errors are described below:

- In case of writing request to a read-only variable → *READ\_ONLY VARIABLE!*
- In case of wrong server name or url or wrong NodeID → *NO SUCH SERVER or VARIABLE!*
- In case of missing data in the variable → *NO VALUE!*

**MECHANICAL DIMENSIONS:**

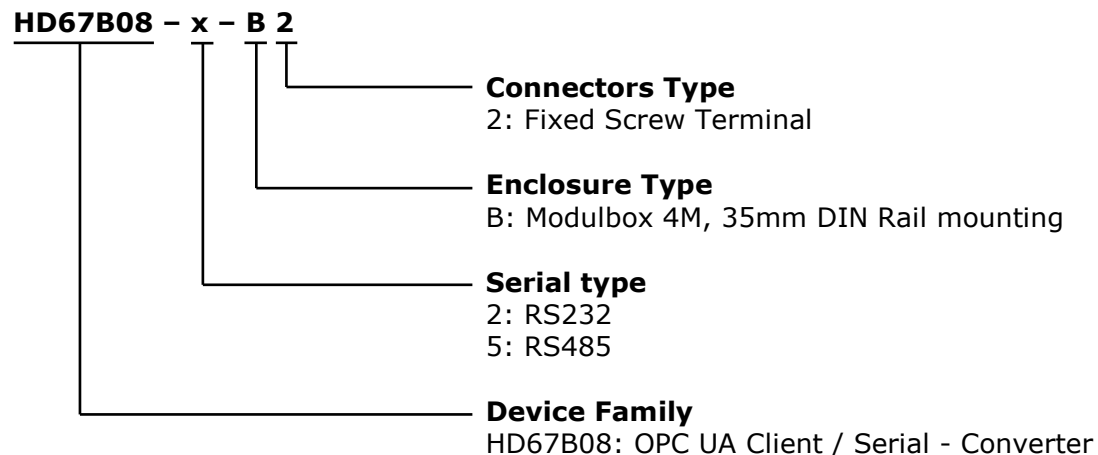


Housing: PVC  
 Weight: 200g  
 (Approx)

Figure 12: Mechanical dimensions scheme for HD67B08-x-B2

**ORDERING INFORMATIONS:**

The ordering part number is formed by a valid combination of the following:



- Order Code: **HD67B08-2-A1** - OPC UA Client / Serial - Converter (Serial port: RS232)
- Order Code: **HD67B08-5-A1** - OPC UA Client / Serial - Converter (Serial port: RS485)

**ACCESSORIES:**

- Order Code: **AC34011** - 35mm Rail DIN - Power Supply 220/240V AC 50/60Hz – 12 V DC
- Order Code: **AC34012** - 35mm Rail DIN - Power Supply 220/240V AC 50/60Hz – 24 V DC

**DISCLAIMER:**

All technical content within this document can be modified without notice. The content of the document is a under continual renewal. For losses due to fire, earthquake, third party access or other accidents, or intentional or accidental abuse, misuse, or use under abnormal conditions repairs are charged to the user. ADFweb.com S.r.l. will not be liable for accidental loss of use or inability to use this product, such as loss of business income. ADFweb.com S.r.l. shall not be liable for consequences of improper use.

**OTHER REGULATIONS AND STANDARDS:**

**WEEE INFORMATION**



Disposal of old electrical and electronic equipment (as in the European Union and other European countries with separate collection systems).

— This symbol on the product or on its packaging indicates that this product may not be treated as household rubbish. Instead, it should be taken to an applicable collection point for the recycling of electrical and electronic equipment. If the product is disposed correctly, you will help prevent potential negative environmental factors and impact of human health, which could otherwise be caused by inappropriate disposal. The recycling of materials will help to conserve natural resources. For more information about recycling this product, please contact your local city office, your household waste disposal service or the shop where you purchased the product.

**RESTRICTION OF HAZARDOUS SUBSTANCES DIRECTIVE**



The device respects the 2002/95/EC Directive on the restriction of the use of certain hazardous substances in electrical and electronic equipment (commonly referred to as Restriction of Hazardous Substances Directive or RoHS).

**CE MARKING**



The product conforms with the essential requirements of the applicable EC directives.



### **WARRANTIES AND TECHNICAL SUPPORT:**

For fast and easy technical support for your ADFweb.com SRL products, consult our internet support at [www.adfweb.com](http://www.adfweb.com). Otherwise contact us at the address [support@adfweb.com](mailto:support@adfweb.com)

### **RETURN POLICY:**

If while using your product you have any problem and you wish to exchange or repair it, please do the following:

- ➔ Obtain a Product Return Number (PRN) from our internet support at [www.adfweb.com](http://www.adfweb.com). Together with the request, you need to provide detailed information about the problem.
- ➔ Send the product to the address provided with the PRN, having prepaid the shipping costs (shipment costs billed to us will not be accepted).

If the product is within the warranty of twelve months, it will be repaired or exchanged and returned within three weeks. If the product is no longer under warranty, you will receive a repair estimate.



**ADFweb.com S.r.l.**  
 Via Strada Nuova, 17  
 IT-31010 Mareno di Piave  
 TREVISO (Italy)  
 Phone +39.0438.30.91.31  
 Fax +39.0438.49.20.99  
[www.adfweb.com](http://www.adfweb.com)

